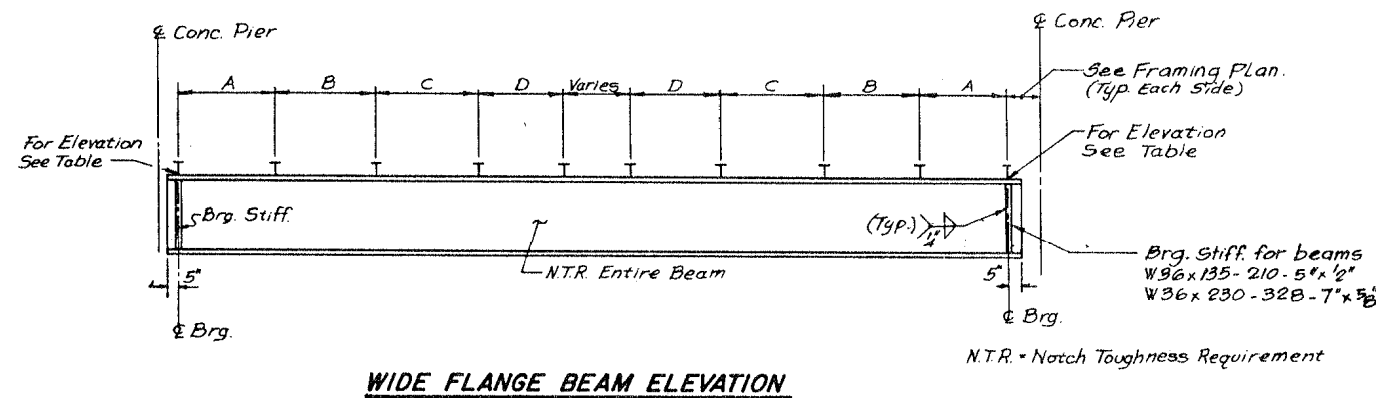


WIDE FLANGE BEAM SCHEDULE																
SPAN	BEAM	BEAM SIZE	L (¢ BRG. TO ¢ BRG.)	TOP OF BEAM ELEV. AT BEARINGS				STUDS PER ROW	SHEAR STUD SPACINGS				STUDS PER BEAM	DEFLECTION		
				PIER NO.	ELEV.	PIER NO.	ELEV.		A	B	C	D		Δ	ε	Δ _{1/4}
15	GN-1	W36x170	67'-10"	14(H12)	46.485	15	47.444	4	15Sp@12"	15Sp@15"	—	—	248	3/4	9/16	
18	GN-1	W36x230	69'-7 3/4"	17	51.031	18	51.526	4	18Sp@9"	21Sp@12"	—	—	320	1/2	1/2	
19	GN-1	W36x260	78'-11 1/8"	18	51.542	19	51.866	4	16Sp@9"	27Sp@12"	—	—	352	1	1/16	

Note:
Shear Stud Spacing Starts 2'-0" From ¢ Bearing at Pier 19 for Beam GN-1, Span 19.



WIDE FLANGE BEAM SCHEDULE																
SPAN	BEAM	BEAM SIZE	L (¢ BRG. TO ¢ BRG.)	TOP OF BEAM ELEV. AT BEARINGS				STUDS PER ROW	SHEAR STUD SPACINGS				STUDS PER BEAM	DEFLECTION		
				PIER NO.	ELEV.	PIER NO.	ELEV.		A	B	C	D		Δ	ε	Δ _{1/4}
14	G5-1	W36x328	80'-7 1/8"	13	41.600	14	43.012	4	60@4"	40@6"	—	—	808	1 1/2	13/16	
14	G5-2	W36x194	81'-7 7/8"	13	41.916	14	43.115	4	16@15"	8@21"	—	—	400	1 1/8	3/4	
15	G5-1	W36x230	70'-2 5/8"	14	43.255	15	44.436	4	13@15"	11@21"	—	—	200	1/2	3/8	
15	G5-2	W36x160	69'-5 1/8"	14	43.177	15	44.189	4	13@15"	14@18"	—	—	224	3/4	1/2	
17	G5-1	W36x194	72'-3"	16	44.531	17	45.806	4	15@9"	24@12"	—	—	320	3/4	9/16	
18	G5-1	W36x260	75'-2 1/8"	17	43.576	18	45.407	4	20@9"	22@12"	—	—	344	9/16	5/8	
19	G5-1	W36x245	82'-3 3/8"	18	45.457	19	47.455	4	20@9"	25@12"	—	—	368	1 1/8	3/4	

Length of Stud Shear Connector to be determined by the Contractor in the field to insure a min. 2" Penetration in Slab

