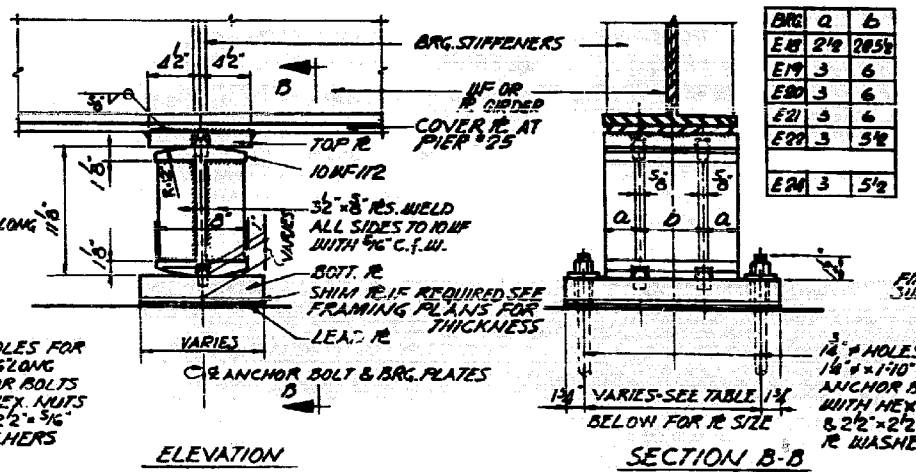
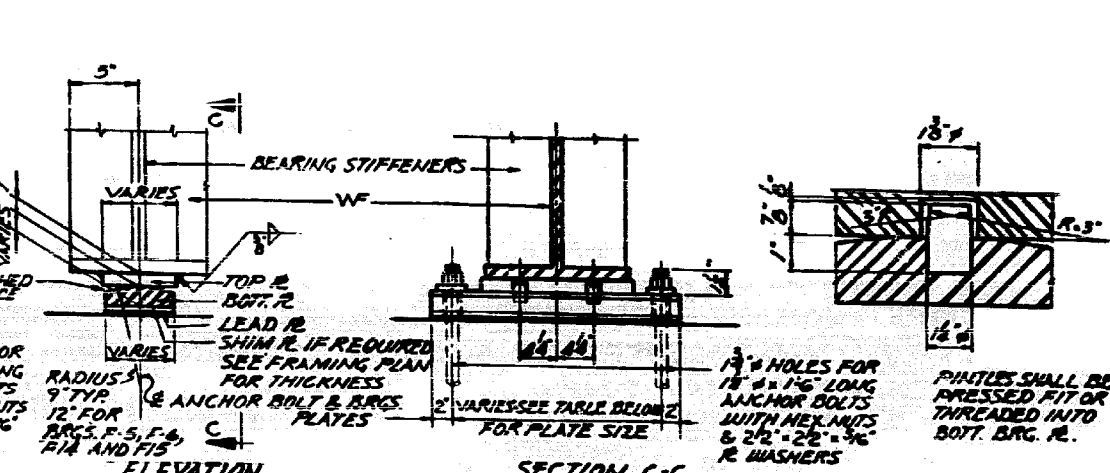


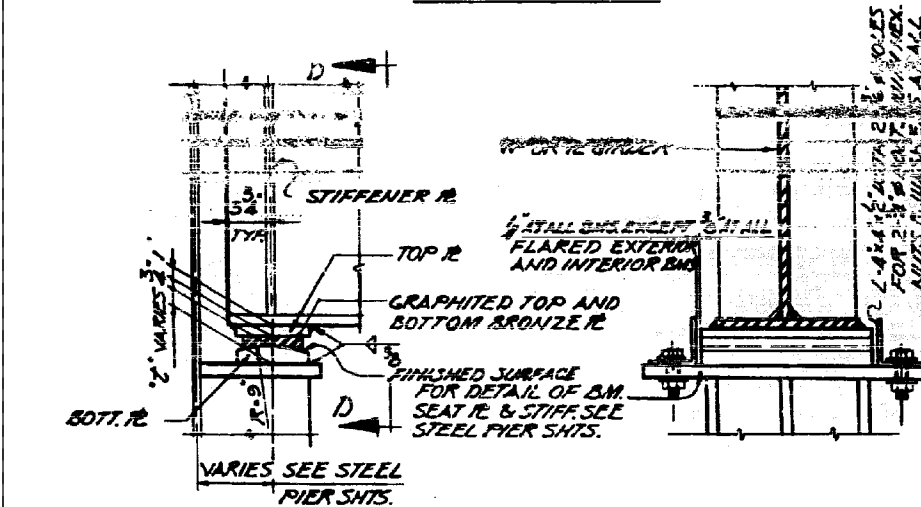
TYPICAL EXPANSION BEARING FOR CONCRETE PIERS AND ABUTMENTS



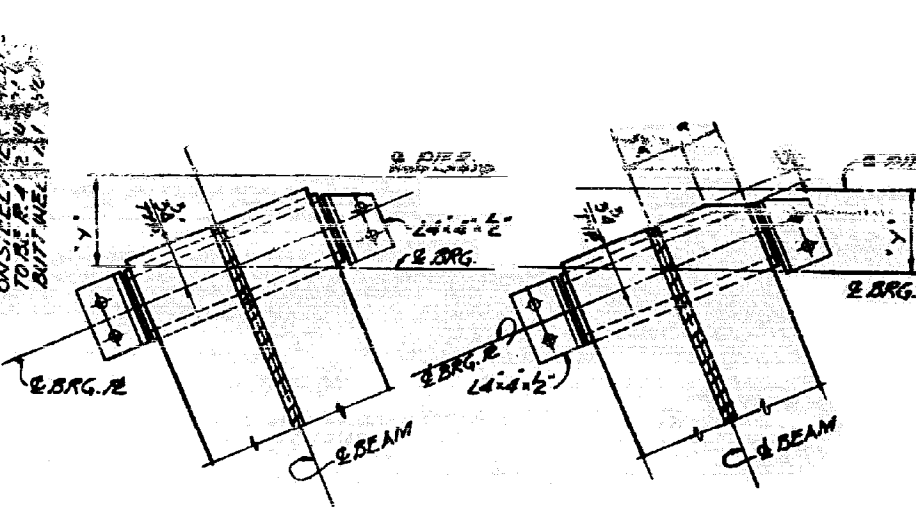
TYPICAL EXPANSION ROCKER BEARING AT PIERS 25, 26



TYPICAL FIXED BEARING FOR CONCRETE PIERS PINTLE-DETAIL



EXPANSION BEARING ON STEEL PIERS



TYPE 1 NO CUTS, TYPE 2, TYPE 4

TABLE U BOTTOM PLATE CUTS AT STEEL PIERS

PIER BEAMS	Y	BRG. TYPE	A	B	C	REMARKS	
4	15.610	6"	E2	2	8"	-	6"
5	15.610	6"	E2	2	8"	-	1"
6	15.610	6"	E2	2	7"	7"	1"
7	15.610	6"	E2	2	7"	6"	1"
19	2-17	7"	E2	4	5"	5"	1"
23		6"	F1	4	5"	5"	1"

EXPANSION BEARING TABLE

MARK	TOTAL	TOP R.	BRONZE R.	BOTT. R.	LEAD R.
E1	26	6x1'x1'1"	4x1/4x1'1"	6x1/8x1'1"	6x3/8x1'1"
E2	111	6x1'x1'3/2"	4x1/4x1'3/2"	6x1'7x1'3/2"	6x1/8x1'3/2"
E4	1	6x1'x0'11/8"	4x1/4x0'11/8"	6x2'3/8x1'8/8"	6x1/8x1'8/8"
E5	21	6x1'x1'1"	5x1/4x1'1"	6x2'6x1'10"	6x1/8x1'10"
E6	63	6x1'x1'1"	5x1/4x1'1"	6x2'6x1'10"	6x1/8x1'10"
E8	13	6x1'x1'8/8"	5x1/4x1'8/8"	6x2'3/8x2'3"	6x1/8x2'3"
E9	3	6x1'x1'8/8"	5x1/4x1'8/8"	6x2'3/8x2'3"	6x1/8x2'3"
E10	8	6x1'x1'6/8"	5x1/4x1'6/8"	6x1'3/8x1'6/8"	6x1/8x1'6/8"
E13	1	6x1'x1'3/2"	5x1/4x1'3/2"	6x2'3/8x2'3"	6x1/8x2'3"
E14	15	6x1'x1'1"	5x1/4x1'1"	6x2'6x1'10"	6x1/8x1'10"
E15	1	6x1'x1'1"	5x1/4x1'1"	6x2'6x1'10"	6x1/8x1'10"
E16	8	6x1'x1'1"	5x1/4x1'1"	6x2'6x1'10"	6x1/8x1'10"
E18	3	9x1'3/8x1'4"	ROCKER	10x2'x1'11/2"	10x1/8x1'11/2"
E19	6	9x1'1/4x1'0"	ROCKER	10x1'6x1'7/8"	10x1/8x1'7/8"
E20	1	9x1'1/4x1'0"	ROCKER	10x2'x1'7/8"	10x1/8x1'7/8"

FIXED BEARING TABLE

MARK	TOTAL	TOP R.	B. T. R.	LEAD R.	CUT TYPE
F	4	6x1'x0'10"	6x1'6x1'3/8"	6x1/8x1'5/8"	
F2	2	6x1'x0'11/8"	6x1'6x1'7"	6x1/8x1'7"	
F3	21	6x1'x1'1"	6x2'6x1'8"	6x1/8x1'8"	
F7	1	6x1'x1'3/2"	6x2'6x2'8"	6x1/8x2'8"	
F8	3	6x1'x1'1"	6x2'6x1'8"	6x1/8x1'8"	
F13	1	6x1'x1'3/2"	6x2'6x2'2"	6x1/8x2'2"	