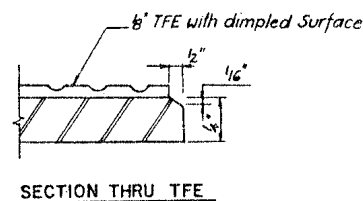
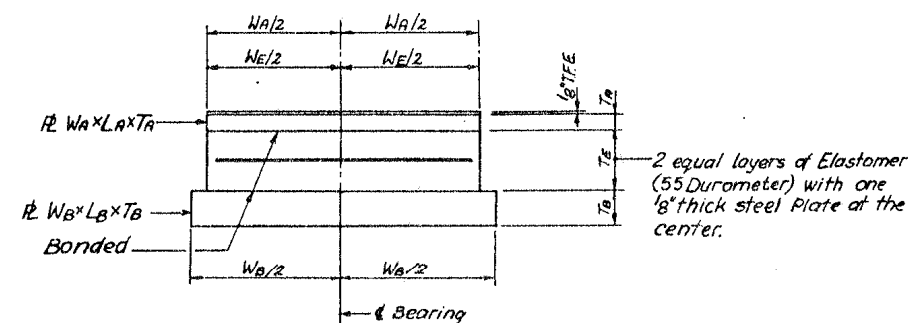
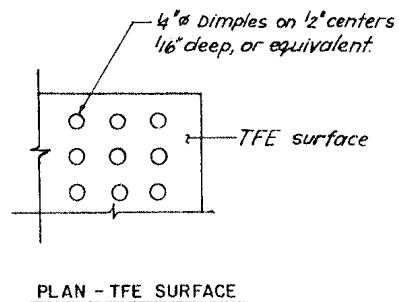
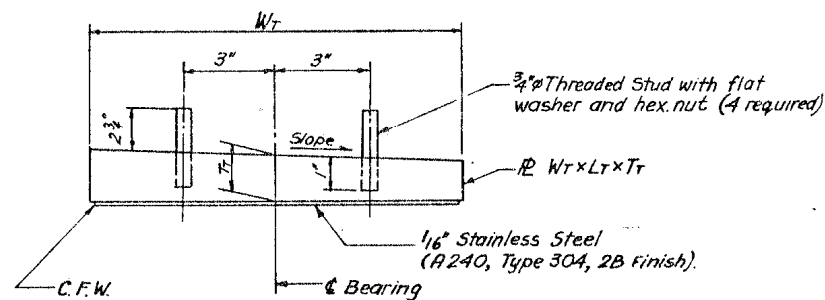


TYPE IV TFE ELASTOMERIC EXPANSION BEARING



Note:
 The 1/8" TFE sheet shall be bonded directly to the top Steel Plate with a two-component, medium viscosity epoxy resin, conforming to the requirements of the Federal Specification MMN-A-13A, Type I. The bond agent shall be applied on the full area of the contact surface.
 Bonding of 1/8" TFE sheet during vulcanizing process will be permitted provided the process and method of adjusting assembly height is approved by the Engineer.

- Notes:**
1. Height of Bearing Assembly, H_E , includes 1/8" lead Plate. (Does not include Shim if required)
 2. For Bearings without Bolsters, the Side Retainer shall be tack welded as shown after the Girder and Bearing assembly have been set into their final position.

TYPE IV ELASTOMERIC EXPANSION BEARING SCHEDULE

STRUCTURE NO.	PIER LOCATION	GIRDER NO.	NO. REQ'D	ELASTOMER			TOP PLATE			BOTTOM BEARING ASSEMBLY								H_E	REMARKS
				T_E	W_E	L_E	T_T	W_T	L_T	$\%$ SLOPE	T_A	W_A	L_A	T_B	W_B	L_B	B_L		
016-1118	H9(N)	1-6	6	1	9	12	1 1/2	1 1/2	16 1/2	3.0	4	9	12	1 1/2	10	25	10 1/2	3 3/4	R
			GH-1	1	1	9	12	1 1/2	1 1/2	16 1/2	3.0	4	9	12	1 1/2	10	25	10 1/2	5 3/4
	H12(W)	1-6	6	7	9	12	1 1/2	1 1/2	16 1/2	3.0	4	9	12	1 1/2	10	25	10 1/2	5 3/4	R
			GH2,3	2	7	9	12	1 1/2	1 1/2	16 1/2	3.0	4	9	12	1 1/2	10	25	10 1/2	3 3/4

Remarks: R - Replacement Bearings.
 N - New Bearings for roadway widening