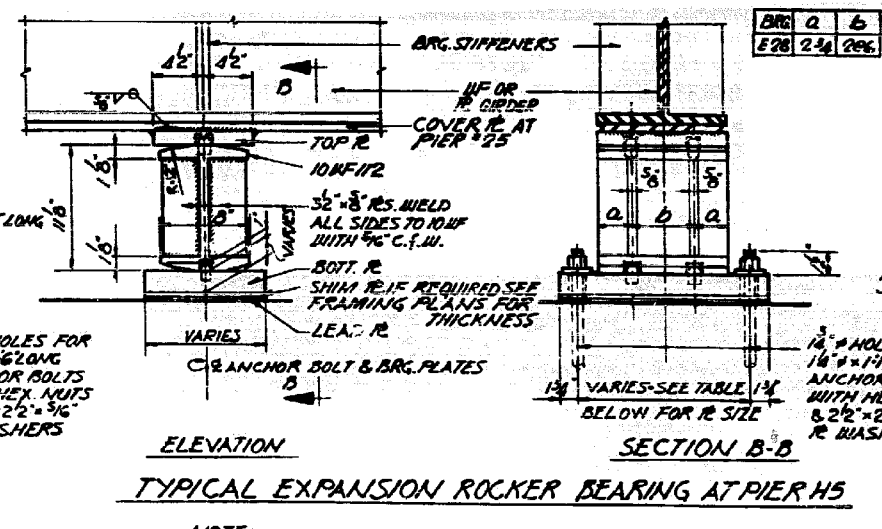
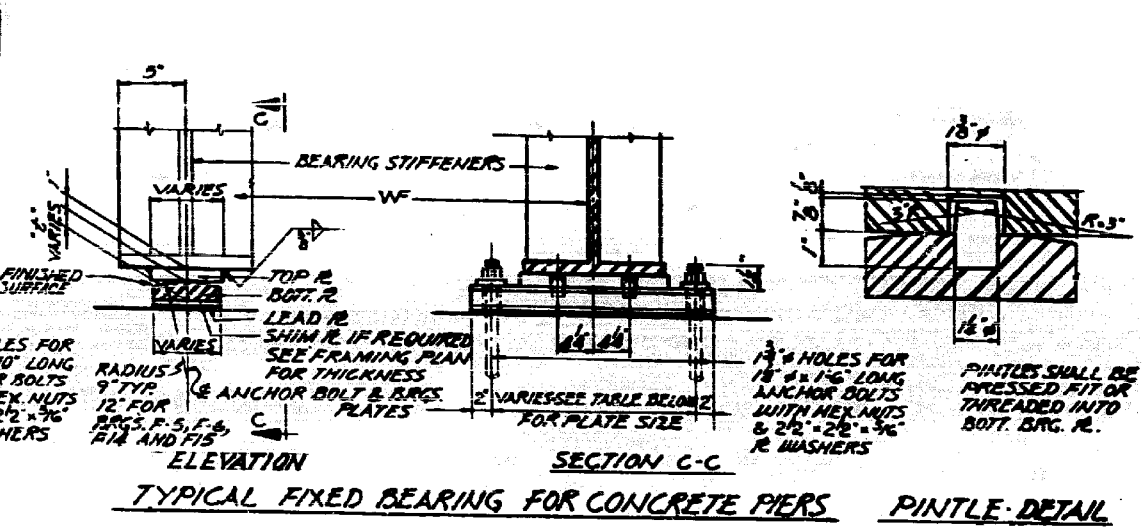


TYPICAL EXPANSION BEARING FOR CONCRETE PIERS AND ABUTMENTS

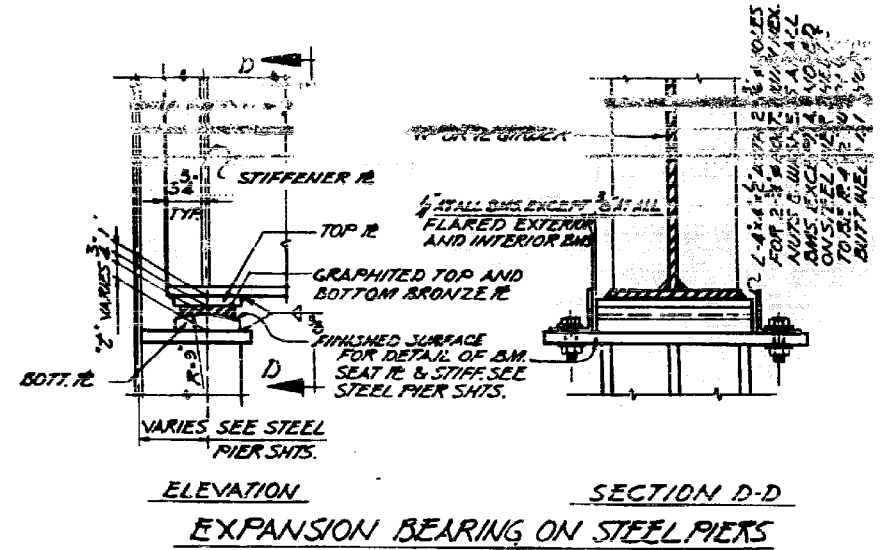


TYPICAL EXPANSION ROCKER BEARING AT PIER H5

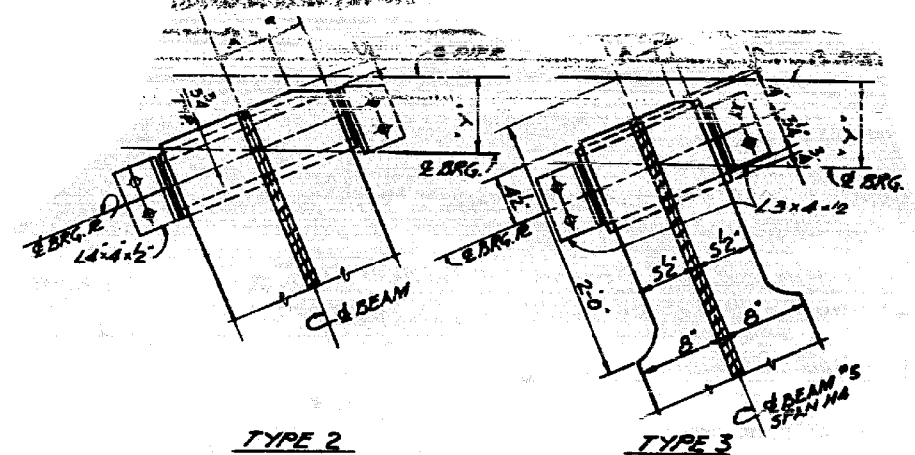


TYPICAL FIXED BEARING FOR CONCRETE PIERS PINTLE DETAIL

NOTE:
SEE TABLES BELOW FOR ALL BEARINGS AND PLATE SIZES
SHIM PLATES TO BE SAME WIDTH AND LENGTH AS BOTTOM PLATES
ALL ANCHOR BOLTS SHALL BE FURNISHED AND INSTALLED
FOR SECTION 3-24.3.2



EXPANSION BEARING ON STEEL PIERS



TYPE 2 TYPE 3 FLANGE AND TOP PLATE CUTS AT STEEL PIERS

TABLE 11 DIMENSIONAL DATA AT STEEL PIERS

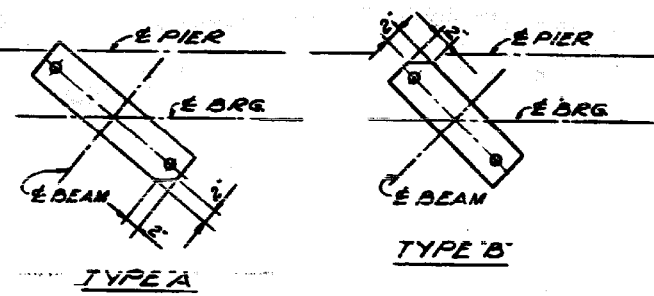
PIER	BEAM	Y	BRG. GROUP	A	B	C	REMARKS
1	6"	E1	2	14"	6 1/2"	1"	
H2	23450	6"	E1	2	14"	6 1/2"	1"
6	6"	E1	2	14"	7 1/2"	1"	
1	6"	E1	2	24"	3 1/2"	1"	
H3	23450	6"	E7	2	14"	6 1/2"	1"
7	6"	E11	2	34"	6 1/2"	1"	
H4	1234	7 1/2"	E2	2	4"	4"	1 1/2"
5	7 1/2"	E12	3	4"	14"	6"	CUT TOP R.

EXPANSION BEARING TABLE

MARK	TOTAL	TOP R.	BRONZE R.	BOTT. R.	LEAD R.	MARK	TOTAL	TOP R.	BRONZE R.	BOTT. R.	LEAD R.	CUT TYPE
E2	3	6x1'x1'5/8"	1/2 x1/4x1'5/8"	6x1'x1'5/8"	6x1'x1'5/8"	E2G	10	6x1'x1'5/8"	5x1/8x1'5/8"	6x2'x2'5"	6x1'x1'5/8"	A
E3	1	6x1'x0'10"	1/2 x1/4x0'10"	6x1'x1'7"	6x1'x1'7"							
E4	1	6x1'x0'10"	1/2 x1/4x0'10"	6x2'x1'0 1/2"	6x1'x1'0 1/2"							
E5	12	6x1'x1'1"	5 x1/8x1'1"	6x2'x1'10"	6x1'x1'10"							
E6	18	6x1'x1'1"	5 x1/8x1'1"	6x2'x1'10"	6x1'x1'10"							
E7	12	6x1'x1'5"	5 x1/8x1'5"	6x2'x1'10"	6x1'x1'10"							
E11	4	7x1'x1'5"	5/8 x1/8x1'5"	7x1'x1'5"	7x1'x1'5"							
E12	1	8x1'x1'0"	6/8 x1/8x1'0"	8x1'x1'0"	8x1'x1'0"							
E14	4	6x1'x1'1"	5 x1/8x1'1"	6x2'x1'10"	6x1'x1'10"							
E15	4	6x1'x1'1"	5 x1/8x1'1"	6x2'x1'10"	6x1'x1'10"							
E16	6	6x1'x1'1"	5 x1/8x1'1"	6x2'x1'10"	6x1'x1'10"							

FIXED BEARING TABLE

MARK	TOTAL	TOP R.	BOTT. R.	LEAD R.	CUT TYPE
F3	1	6x1'x1'1"	6x2'x1'10"	6x1'x1'10"	
F4	1	6x1'x1'5/8"	6x2'x1'10"	6x1'x1'10"	
F5	1	9x1'x1'0 1/2"	8x2'x1'10"	8x1'x1'10"	
F9	1	6x1'x1'1"	6x2'x1'10"	6x1'x1'10"	
F10	1	6x1'x1'1"	6x2'x1'10"	6x1'x1'10"	



TYPE A TYPE B BOTTOM BEARING PLATE CUTS AT CONCRETE PIERS NOT TO SCALE