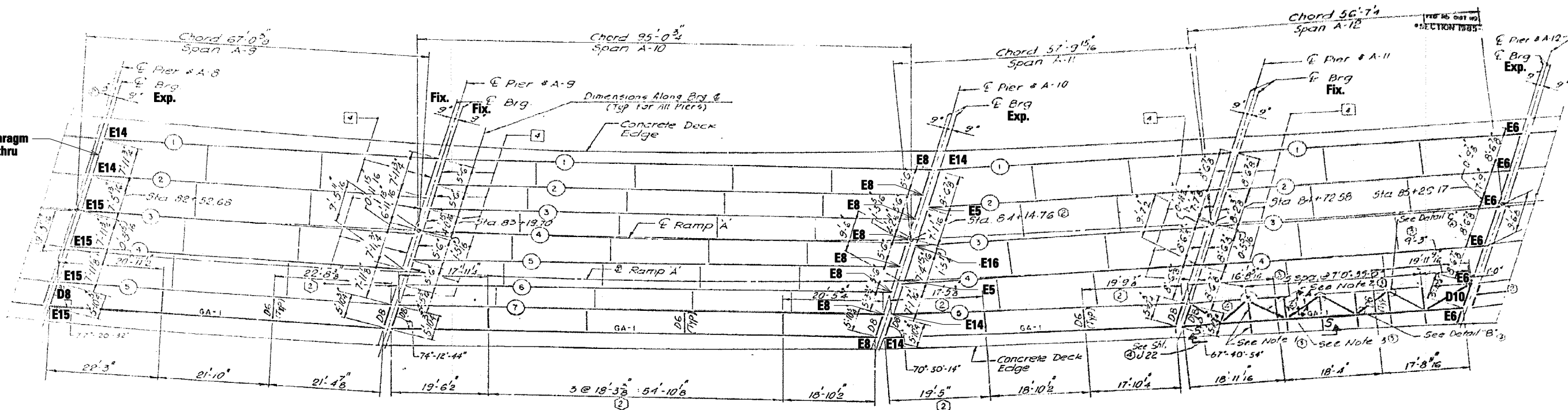
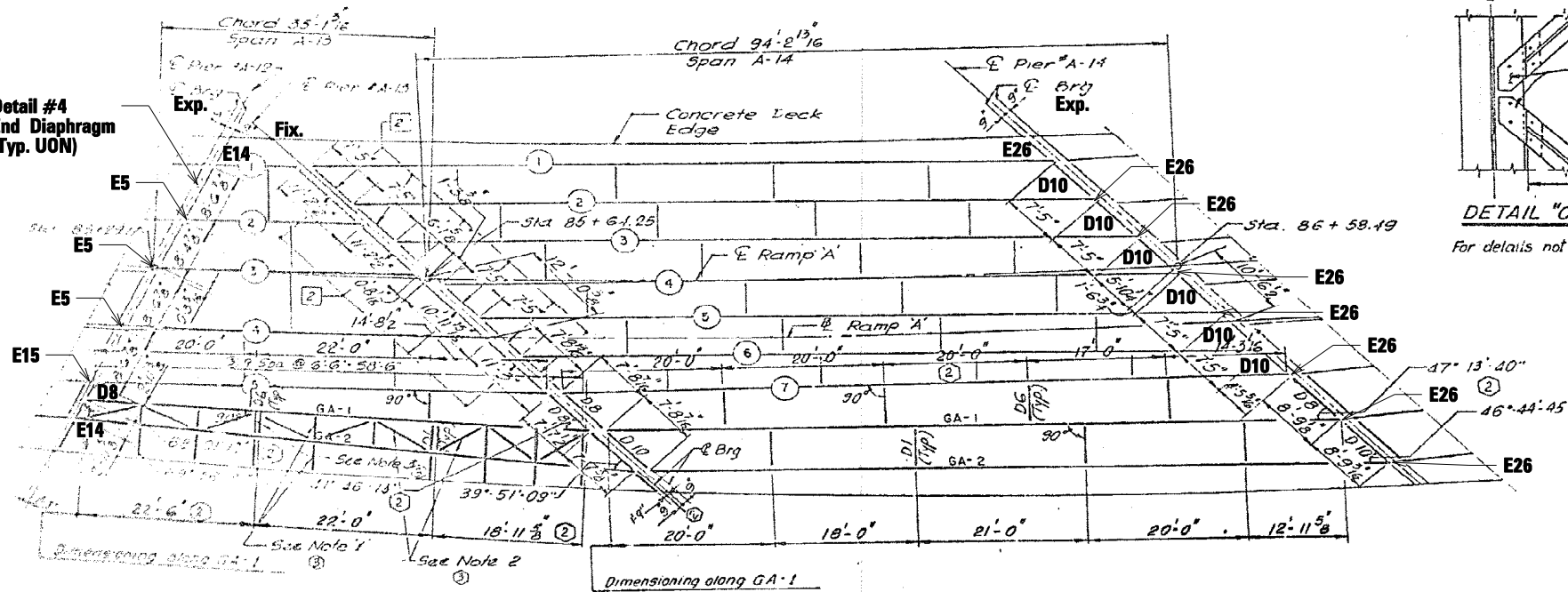


Detail #4 End Diaphragm
(Typ. for Spans A9 thru
A12 UON)

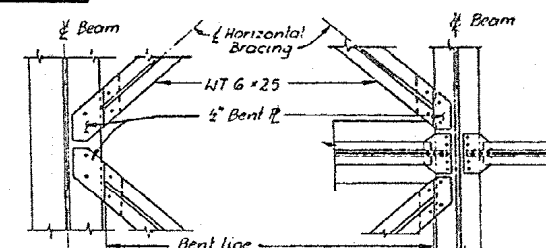


PLAN - SPANS A-9, A-10, A-11 & A-12

Detail #4
End Diaphragm
(Typ. UON)



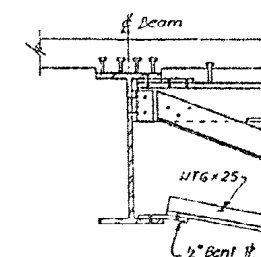
PLAN - SPANS A-13 & A-14



DETAIL "C" ④

DETAIL "B" ④

For details not shown on "A", "B" & "C", See sheet BR1 of 1, Vol 13



SECTION A-A ④

BRACKET NOTES ③

1. WT 6x25 (Above), 2 L's - 6x4's (Below)
See Section A-A, SH1 BR1, Vol 13
2. Horizontal Bracing WT 6x25
@ Bolt Flange (TYP)
3. If Bracket Location Interferes
with One Existing Diaphragm,
Shift to Clear.

General Note:

- All New Structural Steel for Brackets
Shown in Spans A12 & A13 To be
Furnished Under This Contract

FILE #	USER NAME = aread	DESIGNED - AMR	REVISED -	STATE OF ILLINOIS DEPARTMENT OF TRANSPORTATION	FRAMING PLAN SPANS A9 TO A14 - LOCATION 4 STRUCTURE NO. 016-1067	F.A.I. RTE. =	SECTION	COUNTY	TOTAL SHEETS	SHEET NO.
	PLOT SCALE = 2.0000' / IN.	CHECKED - JMH	REVISED -			90/94	2011-057-BP	COOK	98	85
	PLOT DATE = 3/29/2012	DATE - MARCH, 2012	REVISED -		SCALE: NTS	SHEET NO. 4 OF 12 SHEETS	STA.	TO STA.	CONTRACT NO. 60P73	
									ILLINOIS FED. AID PROJECT	