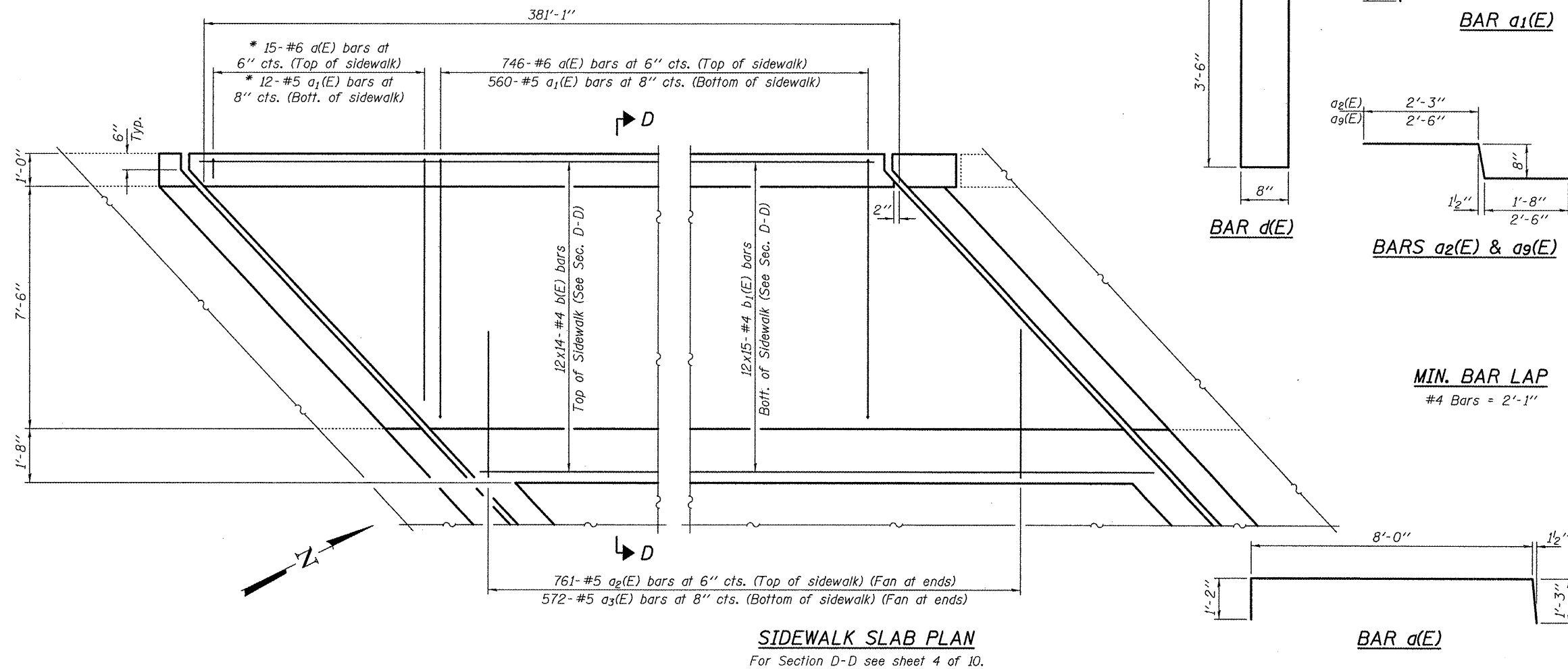


\* Order a(E) & a1(E) bars full length. Cut to fit skew and use remainder of bars in the opposite end.

**PARAPET ELEVATION**  
See sheet 4 of 10 for Parapet Joint Details and see sheet 6 of 10 for Bridge Fence Railing Details.



**BAR a1(E)**

**BAR a3(E)**

**BAR d(E)**

**BARS a2(E) & a9(E)**

**MIN. BAR LAP**  
#4 Bars = 2'-1"

**BAR d(E)**

**BILL OF MATERIAL**

Bar	No.	Size	Length	Shape
a(E)	761	#6	10'-6"	
a1(E)	572	#5	8'-9"	
a2(E)	761	#5	4'-7"	
a3(E)	572	#5	5'-0"	
a4(E)	8	#6	11'-0"	
a5(E)	4	#5	11'-0"	
a6(E)	8	#5	19'-5"	
a7(E)	8	#5	34'-0"	
a8(E)	8	#5	10'-0"	
a9(E)	2	#5	5'-8"	
a10(E)	8	#5	15'-7"	
b(E)	168	#4	29'-4"	
b1(E)	180	#4	27'-9"	
d(E)	592	#5	7'-8"	U
e(E)	72	#4	16'-7"	
e1(E)	12	#4	14'-7"	
e2(E)	12	#4	15'-5"	
e3(E)	36	#4	18'-7"	
e4(E)	24	#4	3'-0"	
Concrete Removal		Cu. Yd.	145	
Concrete Superstructure		Cu. Yd.	162	
Bar Splicers		Each	24	
Reinforcement Bars, Epoxy Coated		Pound	36,500	

Bars indicated thus 12 x 14-#4 etc. indicates 12 lines of bars with 14 lengths per line.

DESIGNED - MKC	EXAMINED - <i>John F. [Signature]</i>	DATE - MAY 9, 2012
CHECKED - ADY	ACTING ENGINEER OF STRUCTURAL SERVICES	
DRAWN - Kyle M. Steffen	PASSED - <i>Carl [Signature]</i>	
CHECKED - MKC ADY	ACTING ENGINEER OF BRIDGES AND STRUCTURES	

**STATE OF ILLINOIS**  
**DEPARTMENT OF TRANSPORTATION**

**SIDEWALK & PARAPET REPLACEMENT DETAILS**  
**SN 016-0235**  
SHEET NO. 5 OF 10 SHEETS

F.A.T. RTE.	SECTION	COUNTY	TOTAL SHEETS	SHEET NO.
290	3-B-10BR(11)	COOK	26	14
CONTRACT NO. 60T39			ILLINOIS FED. AID PROJECT	