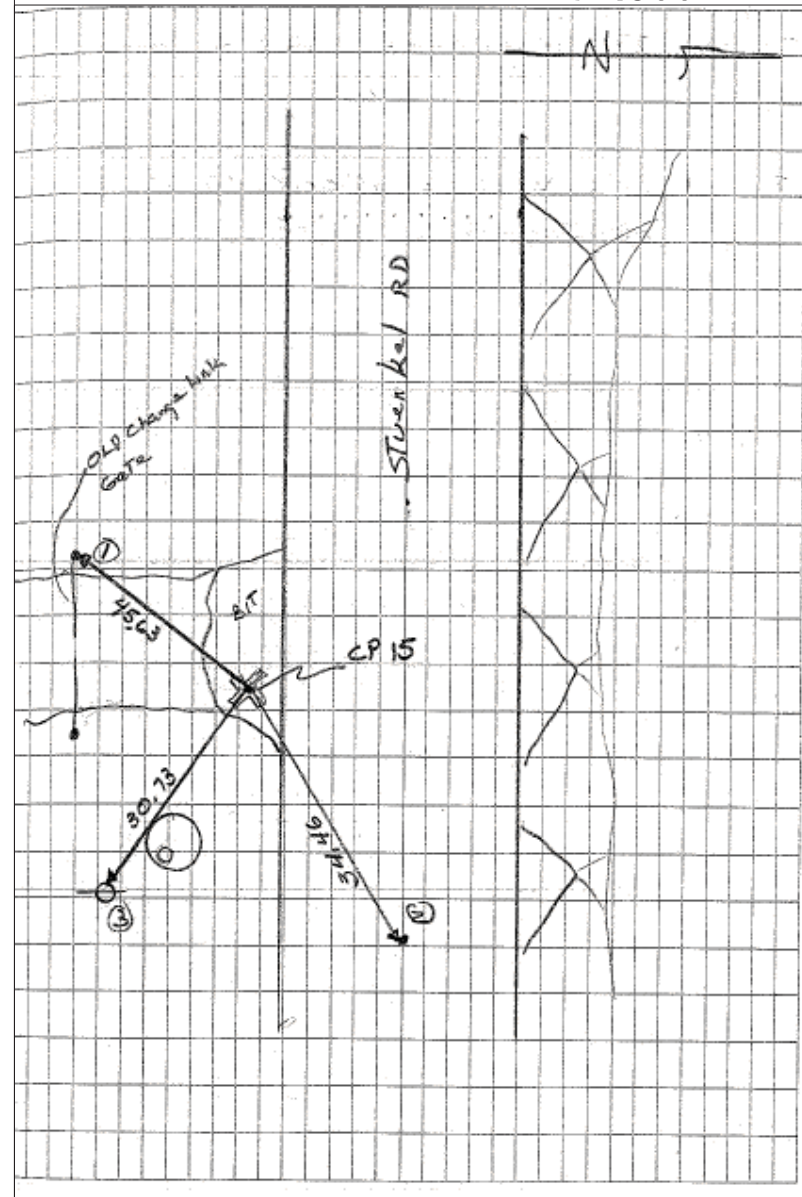


C.P. 15

N: 1,744,868.734  
E: 1,141,267.556  
EL: 757.399



CPT 15 MAG NAIL IN CENTER OF ARCH PANEL

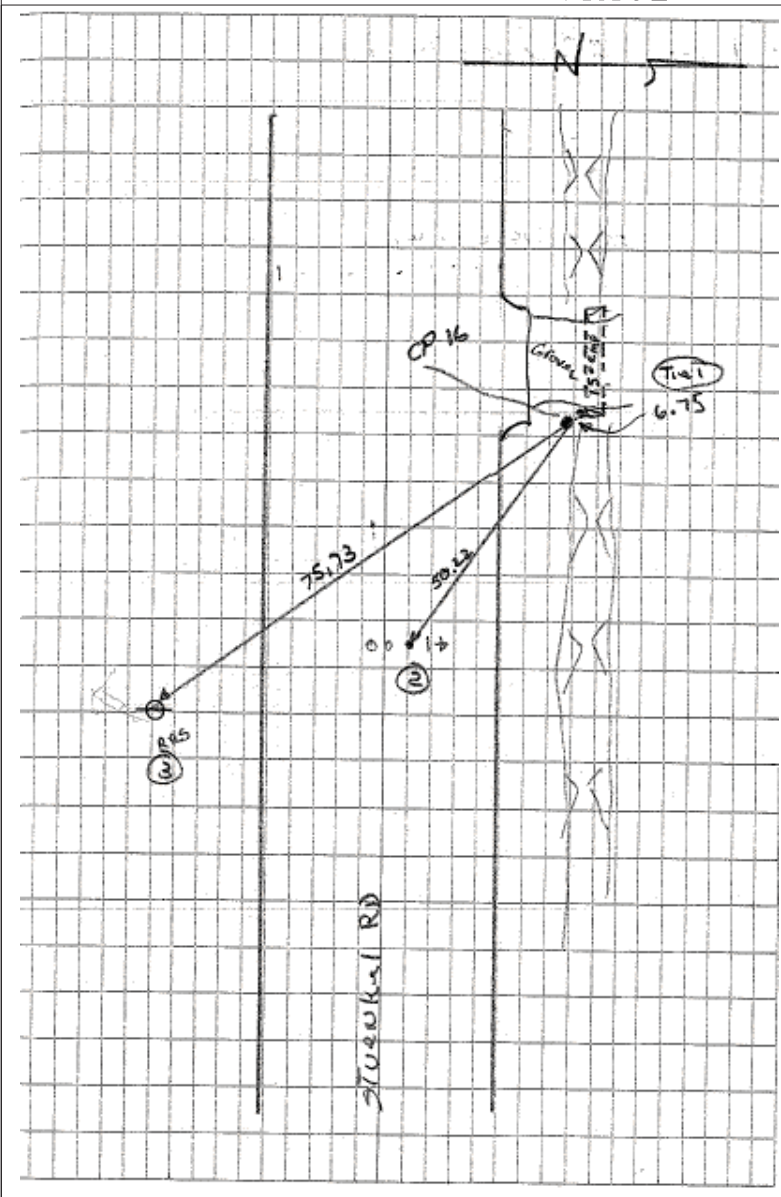
TIE 1 N.E. FACE OF W. GATE POST ON S. SIDE STUENKEL RD (45.63)

TIE 2 34.46 MAG NAIL IN  $\phi$  OF STUENKEL RD E. OF GRAVEL DR

TIE 3 30.73 W. FACE OF PP E. SIDE OF GRAVEL DR (5TH PP W OF I-57)

C.P. 16

N: 1,744,886.409  
E: 1,140,448.140  
EL: 761.192



CPT 16 IR W/ CENTER PUNCH

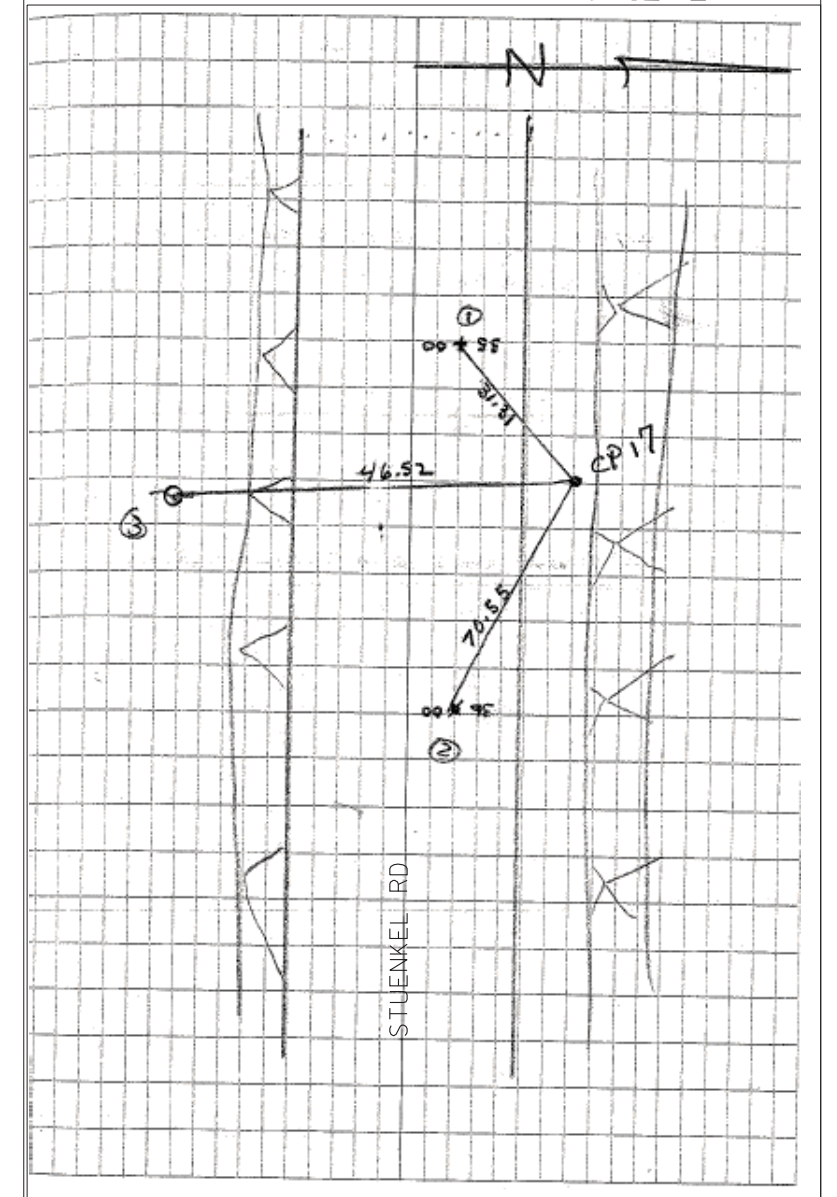
TIE 1 6.75 W. END OF 15" CMP ON N. SIDE OF STUENKEL RD

TIE 2 50.22 TO MAG NAIL STA BY OTHERS 41+00 N. SIDE OF  $\phi$  STUENKEL RD

TIE 3 75.73 TO RRS IN N. FACE OF PP ON S. SIDE OF STUENKEL RD

C.P. 17

N: 1,744,872.932  
E: 1,139,926.685  
EL: 764.272



CPT 17 IR W/ CENTER PUNCH

TIE 1 MAG NAIL IN W. BOUND LANE OF STUENKEL RD STA. 35+00 BY OTHERS

TIE 2 MAG NAIL IN W. BOUND LANE OF STUENKEL RD STA. 36+00 BY OTHERS

TIE 3 RRS IN N. FACE OF 3 PP W. OF RIDGELAND

TYLIN INTERNATIONAL

USER NAME = *USER*	DESIGNED - BES	REVISED -
	DRAWN - BES	REVISED -
PLOT SCALE = *SCALE*	CHECKED - JPM	REVISED -
PLOT DATE = 3/29/2012	DATE - 3/30/2012	REVISED -

STATE OF ILLINOIS  
DEPARTMENT OF TRANSPORTATION

STUENKEL ROAD BRIDGE OVER I-57  
SURVEY TIES FOR CONTROL POINTS

SCALE: N.T.S. SHEET NO. 3 OF 5 SHEETS STA. TO STA.

F.A. RTE.	SECTION	COUNTY	TOTAL SHEETS	SHEET NO.
57	99-1HB-R	WILL	63	12
FED. ROAD DIST. NO. ILLINOIS FED. AID PROJECT			CONTRACT NO. 60T40	