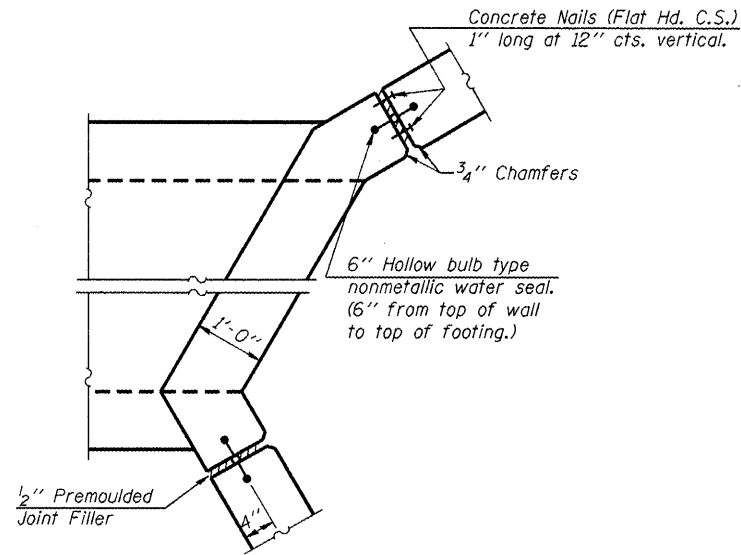


**BAR d101(E), d102(E),
and s101(E)**

BAR BEND TABLE

Bar	A	B
d101(E)	2'-0"	2'-4"
d102(E)	1'-0"	3'-11"
s101(E)	6'-9"	16'-8"



CORNER DETAIL

BILL OF MATERIAL

Bar	No.	Size	Length	Shape
b101(E)	6	#4	28'-3"	—
b102(E)	2	#6	27'-1"	—
b103(E)	2	#6	25'-6"	—
b104(E)	2	#6	23'-11"	—
b105(E)	2	#6	22'-4"	—
b106(E)	2	#6	20'-9"	—
b107(E)	2	#6	19'-1"	—
b108(E)	2	#6	17'-6"	—
d101(E)	56	#4	4'-4"	┌
d102(E)	33	#6	4'-11"	┌
h101(E)	6	#4	18'-10"	—
h102(E)	18	#4	18'-8"	—
h103(E)	6	#4	13'-4"	—
h104(E)	18	#4	13'-2"	—
s101(E)	8	#4	23'-11"	┌
w101(E)	32	#4	10'-8"	—
** Concrete Structures			Cu. Yd.	33.1
** Reinforcement Bars, Epoxy Coated			Pound	1,850

** Included for bidding purposes. Included in the cost of Box Culvert End Section, Culvert No. 1

* For v1(E), v2(E), v11(E), v12(E), w2(E), & w3(E) bars see North End Section Details, Sheet 5.

COMPANY NAME: HRGreen.com
 PROJECT: 102Y-A-B
 CLIENT: ILLINOIS DEPARTMENT OF TRANSPORTATION
 DATE PLOTTED: 3/19/2012 9:39:47 AM
 FILE NAME: 8600096.ZP-62337-C006.dgn
 PLOT DRIVER: pdfplot
 PLOT TABLE: STRUCT 20234191



USER NAME =	DESIGNED - JPG	REVISED
	CHECKED - JPG	REVISED
PLOT SCALE =	DRAWN - JPG	REVISED
PLOT DATE =	CHECKED - RGD	REVISED

STATE OF ILLINOIS
DEPARTMENT OF TRANSPORTATION

SOUTH END SECTION DETAILS
STRUCTURE NO. 016-2826

SHEET NO. 7 OF 8 SHEETS

F.A. RTE.	SECTION	COUNTY	TOTAL SHEETS	SHEET NO.
344	102Y-A-B	COOK	31	18
CONTRACT NO. 62339				
ILLINOIS FED. AID PROJECT				