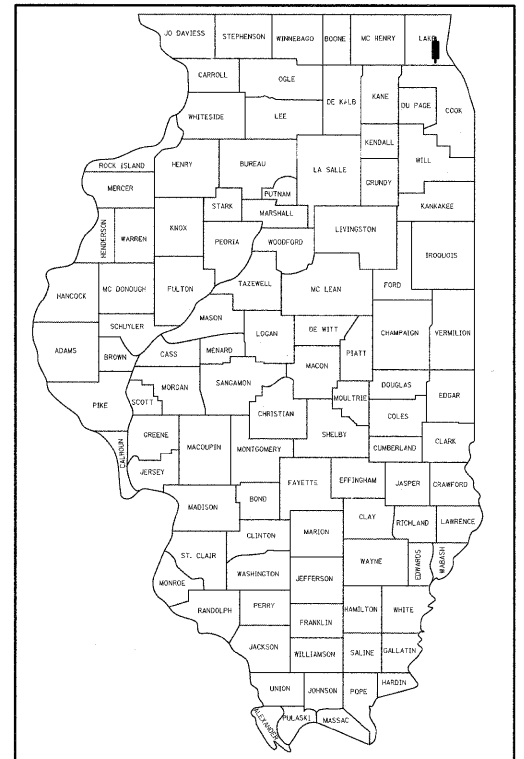


CONSULTANT ENGINEER: REID T. MAGNER, P.E. CIVILTECH ENGINEERING, INC.

PROGRAM AND OFFICE ENGINEER: CHARLES F. RIDDLE, P.E. 847-705-4406 SCHAUMBURG, IL

F.A. RTE.	SECTION	COUNTY	TOTAL SHEETS	SHEET NO.
364	02-00051-08-WR	LAKE	188	1
FED. ROAD DIST. NO.	1 ILLINOIS	CONTRACT NO.	63649	



LOCATION OF SECTION INDICATED THUS:

STATE OF ILLINOIS

DEPARTMENT OF TRANSPORTATION

DIVISION OF HIGHWAYS

PLANS FOR PROPOSED FEDERAL AID HIGHWAY

F.A.P. RTE. 364 (QUENTIN ROAD)
 SOUTH OF LONG GROVE ROAD TO BOSCHOME DRIVE
 ADD LANES AND INTERSECTION IMPROVEMENT
 SECTION NO. 02-00051-08-WR
 PROJECT NO. M-9003 (083)
 LAKE COUNTY
 C-91-016-09

IMPROVEMENT LOCATED IN THE VILLAGE OF DEER PARK AND THE VILLAGE OF KILDEER.

INDEX OF SHEETS

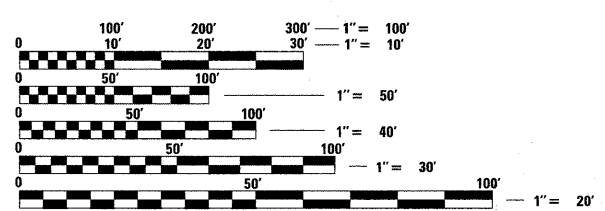
- 1 COVER SHEET
- 2-3 GENERAL NOTES AND LIST OF STATE AND LOCAL STANDARDS
- 4-7 SUMMARY OF QUANTITIES
- 8-13 TYPICAL SECTIONS - QUENTIN ROAD
- 14-15 TYPICAL SECTIONS - LONG GROVE ROAD
- 16-25 SCHEDULE OF QUANTITIES
- 26-42 ALIGNMENT AND TIES AND PLATS OF HIGHWAYS
- 43-53 PLAN AND PROFILE - QUENTIN ROAD
- 54-55 PLAN AND PROFILE - LONG GROVE ROAD
- 56-66 STAGES OF CONSTRUCTION
- 67-71 EROSION CONTROL AND LANDSCAPING
- 72-82 DRAINAGE AND UTILITIES - QUENTIN ROAD
- 83-84 DRAINAGE AND UTILITIES - LONG GROVE ROAD
- 85 STORMWATER MANAGEMENT PLAN
- 86-88 INTERSECTION GRADING PLANS
- 89-91 PAVEMENT MARKING AND SIGNING
- 92-131 TRAFFIC SIGNAL PLANS
- 132-133 CONSTRUCTION DETAILS
- 134 BD-32, BUTT JOINT AND HMA TAPER DETAILS
- 135 BD-51, BENCHING DETAIL FOR EMBANKMENT WIDENING
- 136 TC-10, TRAFFIC CONTROL AND PROTECTION FOR SIDE ROADS
- 137 TC-11, RAISED REFLECTIVE PAVEMENT MARKERS (SNOW PLOW RESISTANT)
- 138 TC-13, DISTRICT ONE TYPICAL PAVEMENT MARKINGS
- 139 TC-16, PAVEMENT MARKING LETTERS AND SYMBOLS FOR TRAFFIC STAGING
- 140 TC-18, SIGNING FOR FLAGGING OPERATIONS AT WORK ZONE OPENINGS
- 141 TC-22, ARTERIAL ROAD INFORMATION SIGN
- 142-153 BAW-A-1(M), BREAK-AWAY WIDE FLANGE STEEL SIGN POST DETAILS
- 154-172 CROSS SECTIONS - QUENTIN ROAD
- 173-177 CROSS SECTIONS - LONG GROVE ROAD
- 178-179 CROSS SECTIONS - DETENTION POND
- 180-188 LCDOT HIGHWAY STANDARDS

FOR LIST OF STATE STANDARDS, SEE SHEET NO. 2

DESIGN DESIGNATION

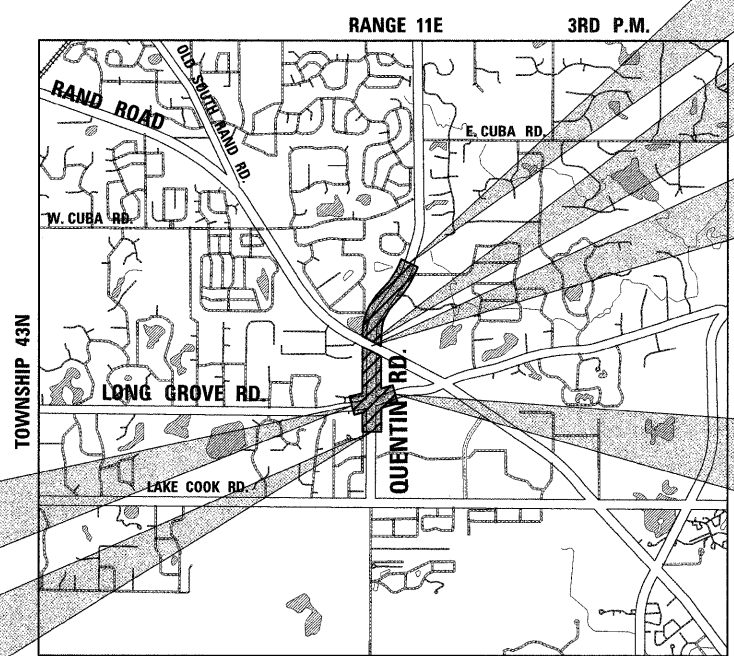
- > Quentin North Leg = Arterial
- > Quentin South Leg = SRA
- > Long Grove Road = Arterial

POSTED SPEED = 40 MPH
 QUENTIN ROAD - 2007 ADT = 17,000 VPD
 LONG GROVE ROAD - 2007 ADT = 4,100 VPD



FULL SIZE PLANS HAVE BEEN PREPARED USING STANDARD ENGINEERING SCALES. REDUCED SIZED PLANS WILL NOT CONFORM TO STANDARD SCALES. IN MAKING MEASUREMENTS ON REDUCED PLANS, THE ABOVE SCALES MAY BE USED.

J.U.L.I.E.
 JOINT UTILITY LOCATION INFORMATION FOR EXCAVATION
 1.800.892.0123 OR 811



BEGIN IMPROVEMENT LONG GROVE ROAD STA 101+80.0

BEGIN IMPROVEMENT QUENTIN ROAD STA 19+71.0

END IMPROVEMENT QUENTIN ROAD STA 24+50.0

PROJECT OMISSION STA 44+91.8 TO 0+45.3

STA EQUATION 45+35.45 = 0+00.0

END IMPROVEMENT LONG GROVE ROAD STA 110+20.0

PROJECT LENGTH:

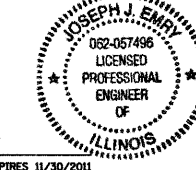
QUENTIN ROAD - 5,015.4 FT (0.95 MILE) (GROSS)
 QUENTIN ROAD - 4,925.5 FT (0.93 MILE) (NET)
 LONG GROVE ROAD - 840.0 FT (0.16 MILE) (NET & GROSS)
 PROJECT TOTAL - 5,855.4 FT (1.11 MILE) (GROSS)
 PROJECT TOTAL - 5,765.5 FT (1.09 MILE) (NET)

APPLIES TO SHEETS 1-91,132-188



Reid T. Magner
 REGISTERED P.E., STATE OF ILLINOIS EXPIRES 11/30/2011

APPLIES TO SHEETS 92-131



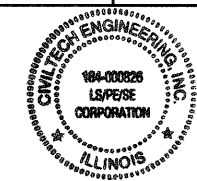
Joseph J. Emry
 REGISTERED P.E., STATE OF ILLINOIS EXPIRES 11/30/2011

STATE OF ILLINOIS DEPARTMENT OF TRANSPORTATION DIVISION OF HIGHWAYS

Approved October 20, 2011
 Mark A. Buschler
 Lake County Div. of Transportation, County Engineer

Passed NOVEMBER 4, 2011
 Charles Christensen
 District One Engineer of Local Roads & Streets

Releasing for Bid Based on Limited Review November 4, 2011
 Diane M. O'Keefe
 Deputy Director of Highways, Region One Engineer



PLANS PREPARED BY:

 450 E. Devon Ave, Suite 300 - Itasca, Illinois 60143
 Tel: 630.773.3900 - Fax: 630.773.3975
 www.civiltechinc.com

CONTRACT NO. 63649

PRINTED BY THE AUTHORITY OF THE STATE OF ILLINOIS