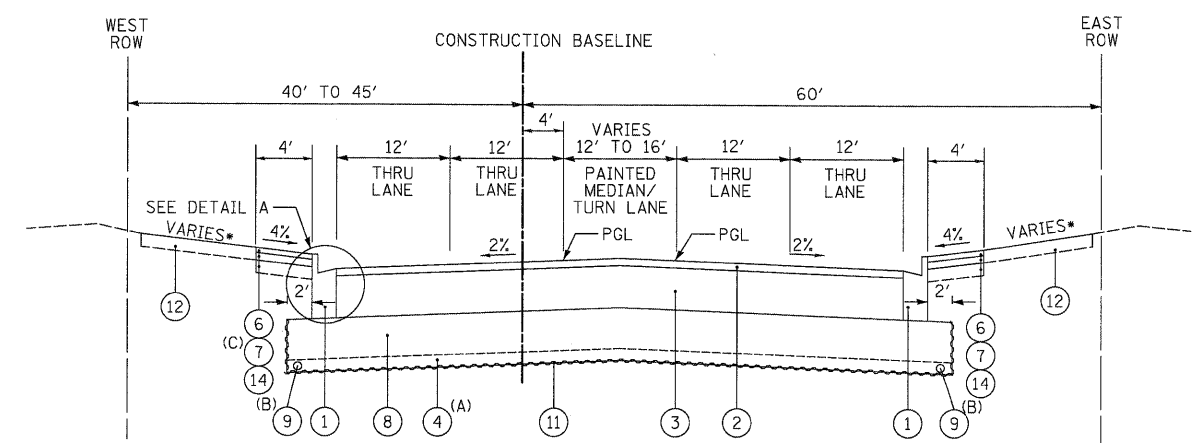


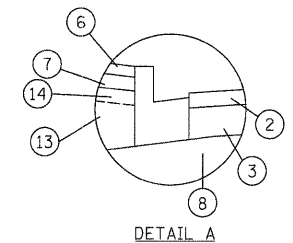
DATE _____
 BY _____
 SURVEYED _____
 PLOTTED _____
 NOTE BOOK _____
 AREAS CHECKED _____

DATE _____
 BY _____
 SURVEYED _____
 PLOTTED _____
 NOTE BOOK _____
 AREAS CHECKED _____



PROPOSED TYPICAL SECTION QUENTIN ROAD
 STA 19+71.0 TO STA 32+20.0

(A) SEE SOIL NOTE AND CROSS SECTION SHEETS FOR LOCATIONS AND DEPTH OF UNDERCUTTING
 (B) UNDER DRAINS AT THE OUTSIDE EDGE OF THE PAVEMENT DRAIN THE AGGREGATE SUBGRADE WITH TRANSVERSE UNDERDRAINS INSTALLED APPROXIMATELY EVERY 300 FT TO 500 FT, AT THE LOW POINTS OF THE PROFILE, AND AT ANY UNDERCUTS DETERMINED IN THE FIELD.
 (C) FROM STA 19+71 TO 22+55.6 : HOT-MIX ASPHALT BINDER COURSE, IL-19.0, N50, 4-1/2"

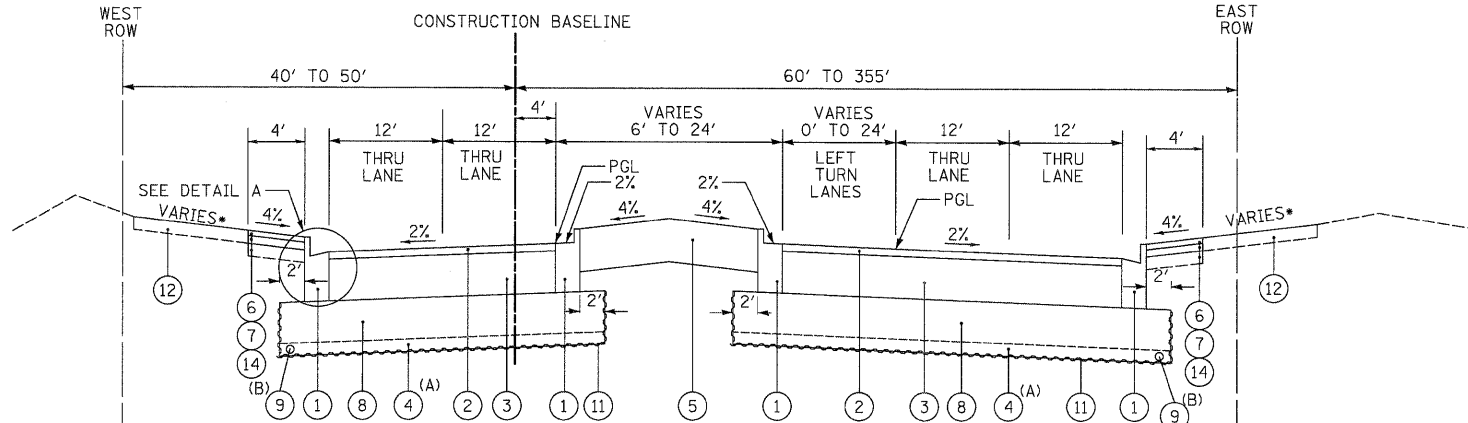


DETAIL A

- PROPOSED LEGEND**
- ① PROPOSED COMBINATION CONCRETE CURB AND GUTTER, TYPE B-6.24
 - ② PROPOSED HOT-MIX ASPHALT SURFACE COURSE, MIX "D", N70, 2"
 - ③ PROPOSED HOT-MIX ASPHALT BINDER COURSE, IL-19.0, N70, 8-1/2"
 - ④ PROPOSED REMOVAL AND DISPOSAL OF UNSUITABLE MATERIAL AND PROPOSED PGE, SUBGRADE
 - ⑤ PROPOSED FURNISH AND PLACE TOPSOIL, 24" (SEE LANDSCAPING SHEETS FOR LIMITS)
 - ⑥ PROPOSED HOT-MIX ASPHALT SURFACE COURSE, MIX "D", N50, 1-1/2"
 - ⑦ PROPOSED HOT-MIX ASPHALT BINDER COURSE, IL-19.0, N50, 2-1/2"
 - ⑧ PROPOSED AGGREGATE SUBGRADE, 12"
 - ⑨ PROPOSED PIPE UNDERDRAINS, 4" (MODIFIED)
 - ⑩ PROPOSED CONCRETE MEDIAN, TYPE SB-6.24 (MODIFIED)
 - ⑪ PROPOSED GEOTECHNICAL FABRIC FOR GROUND STABILIZATION
 - ⑫ PROPOSED FURNISH AND PLACE TOPSOIL, 4" (SEE LANDSCAPING SHEETS FOR LIMITS)
 - ⑬ PROPOSED FURNISHED EXCAVATION
 - ⑭ PROPOSED AGGREGATE BASE COURSE, TYPE A, 4"
- * SLOPE AWAY FROM ROAD IN FILL SECTIONS SLOPE TOWARD ROAD IN CUT SECTIONS
 - ** SEE NEXT SHEET FOR SUPERELEVATION STATIONING AND ELEVATIONS

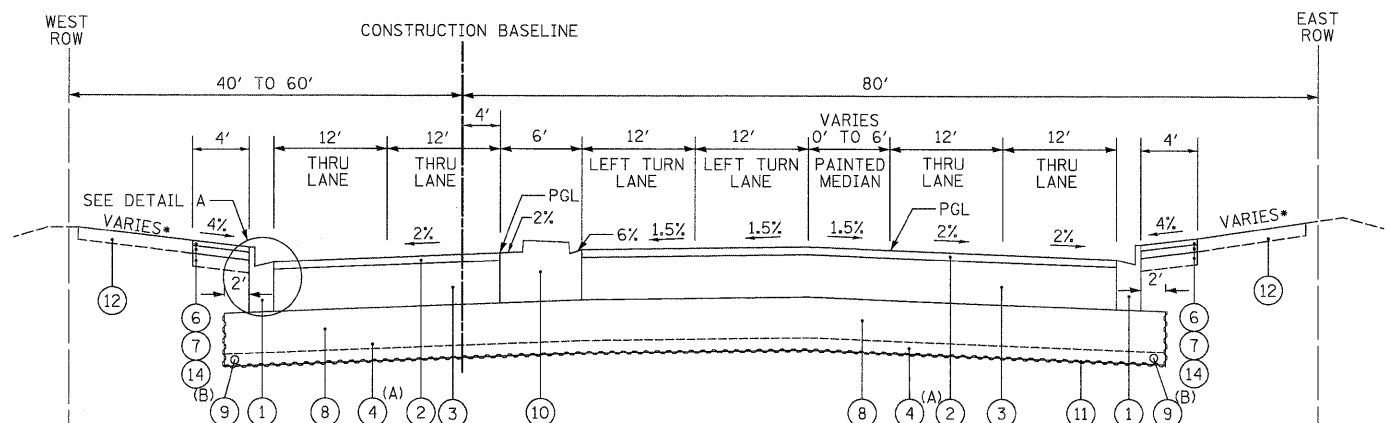
SOILS NOTE:
 POROUS GRANULAR EMBANKMENT, SUBGRADE (PGES) HAS BEEN PROVIDED AT THE LOCATIONS INDICATED FOR SOILS WHICH TEND TO BE UNSTABLE WHEN WET. THE ACTUAL NEED FOR REMOVAL AND REPLACEMENT WITH PGES WILL BE DETERMINED IN THE FIELD AT THE TIME OF CONSTRUCTION BY THE ENGINEER (BY USE OF A CONE PENETROMETER IN CONJUNCTION WITH THE IDOT SUBGRADE MANUAL). IF UNSTABLE SOILS ARE ENCOUNTERED, THE SOILS SHALL BE REMOVED AND REPLACED WITH PGES. IF UNSTABLE SOILS ARE NOT ENCOUNTERED, THEN THE QUANTITY WILL BE DEDUCTED AND NO ADDITIONAL COMPENSATION WILL BE DUE THE CONTRACTOR.
 THE LIMITS OF UNSTABLE SOILS ARE AT THE APPROXIMATE LOCATIONS AS FOLLOWS:

| STA TO STA | ESTIMATED UNDERCUT BELOW DESIGN SUBGRADE |
|----------------|--|
| 26+82 TO 29+85 | 12" FOR FULL WIDTH |
| 32+25 TO 33+75 | EXCAVATE TO ELEV 785 |
| 33+75 TO 37+50 | EXCAVATE TO ELEV 787 |
| 39+88 TO 42+63 | 10" FOR FULL WIDTH |
| 0+00 TO 3+24 | 10" FOR FULL WIDTH |
| 2+75 TO 4+00 | EXCAVATE TO ELEV 787 |



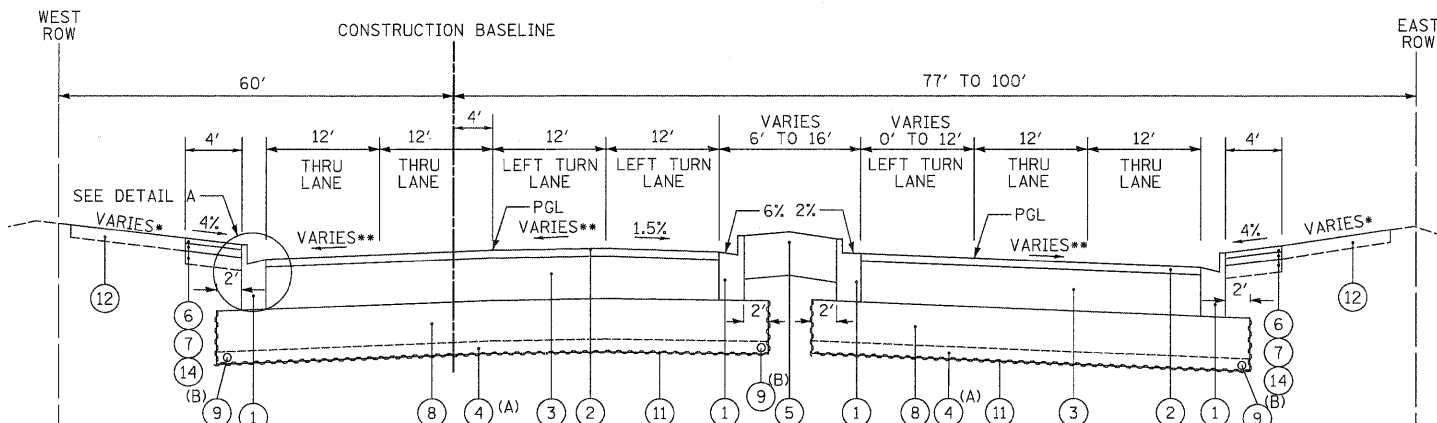
PROPOSED TYPICAL SECTION QUENTIN ROAD
 STA 32+20.0 TO STA 40+48.0

(A) SEE SOIL NOTE AND CROSS SECTION SHEETS FOR LOCATIONS AND DEPTH OF UNDERCUTTING
 (B) UNDER DRAINS AT THE OUTSIDE EDGE OF THE PAVEMENT DRAIN THE AGGREGATE SUBGRADE WITH TRANSVERSE UNDERDRAINS INSTALLED APPROXIMATELY EVERY 300 FT TO 500 FT, AT THE LOW POINTS OF THE PROFILE, AND AT ANY UNDERCUTS DETERMINED IN THE FIELD.



PROPOSED TYPICAL SECTION QUENTIN ROAD
 STA 40+48.0 TO STA 44+91.8

(A) SEE SOIL NOTE AND CROSS SECTION SHEETS FOR LOCATIONS AND DEPTH OF UNDERCUTTING
 (B) UNDER DRAINS AT THE OUTSIDE EDGE OF THE PAVEMENT DRAIN THE AGGREGATE SUBGRADE WITH TRANSVERSE UNDERDRAINS INSTALLED APPROXIMATELY EVERY 300 FT TO 500 FT, AT THE LOW POINTS OF THE PROFILE, AND AT ANY UNDERCUTS DETERMINED IN THE FIELD.



PROPOSED TYPICAL SECTION QUENTIN ROAD
 STA 0+45.3 TO STA 3+92.6

(A) SEE SOIL NOTE AND CROSS SECTION SHEETS FOR LOCATIONS AND DEPTH OF UNDERCUTTING
 (B) UNDER DRAINS AT THE OUTSIDE EDGE OF THE PAVEMENT DRAIN THE AGGREGATE SUBGRADE WITH TRANSVERSE UNDERDRAINS INSTALLED APPROXIMATELY EVERY 300 FT TO 500 FT, AT THE LOW POINTS OF THE PROFILE, AND AT ANY UNDERCUTS DETERMINED IN THE FIELD.

CIVILTECH
 450 E. Devon Ave, Suite 300
 Itasca, Illinois 60143
 Tel: 630.773.3900 Fax: 630.773.3975
 www.civiltechinc.com

| | |
|-------------------|-----------|
| DESIGNED - JRR | REVISED - |
| DRAWN - JRR | REVISED - |
| CHECKED - RTM | REVISED - |
| DATE - 10/24/2011 | REVISED - |

**STATE OF ILLINOIS
 DEPARTMENT OF TRANSPORTATION**

NO SCALE

PROPOSED TYPICAL SECTIONS

SHEET NO. 2 OF 8 SHEETS

| F.A.U. RTE. | SECTION | COUNTY | TOTAL SHEETS | SHEET NO. |
|--|----------------|--------|--------------|-----------|
| 364 | 02-00051-08-WR | LAKE | 188 | 9 |
| CONTRACT NO. 63649 | | | | |
| <small>FED. ROAD DIST. NO. 1 ILLINOIS FED. AID PROJECT</small> | | | | |