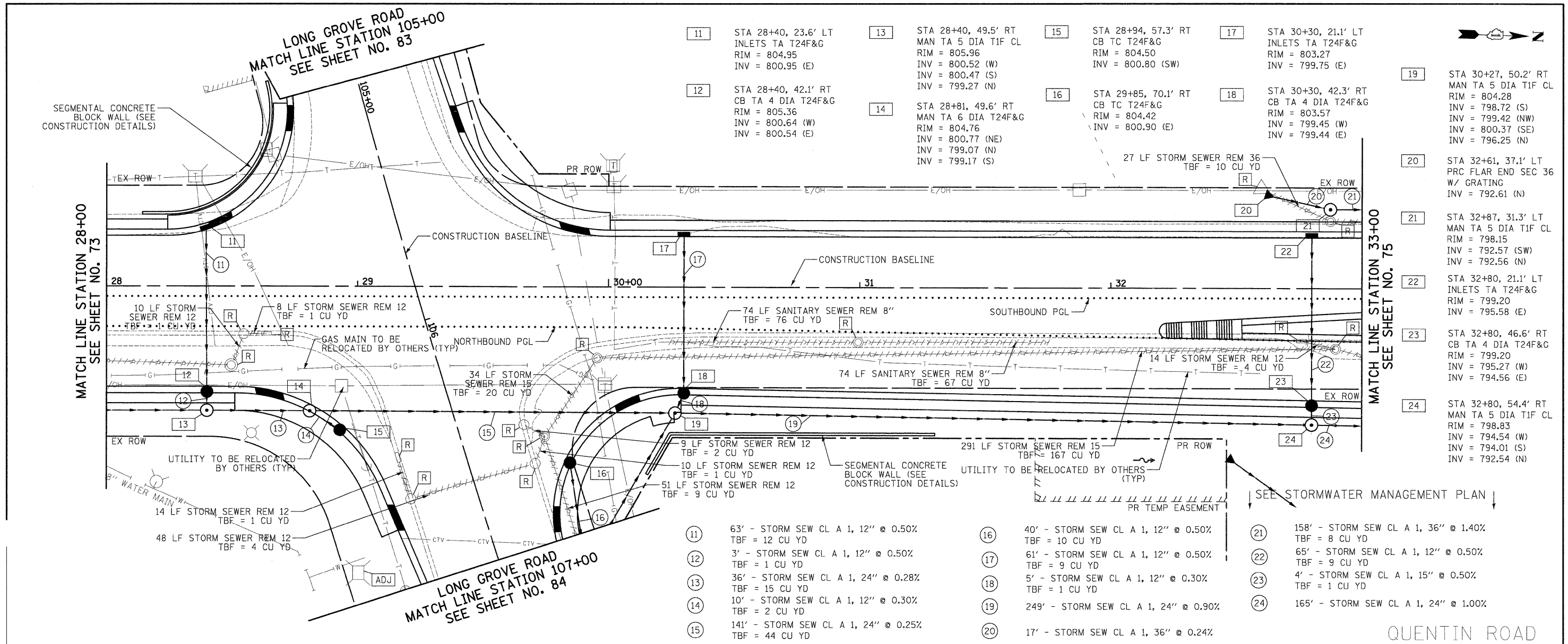


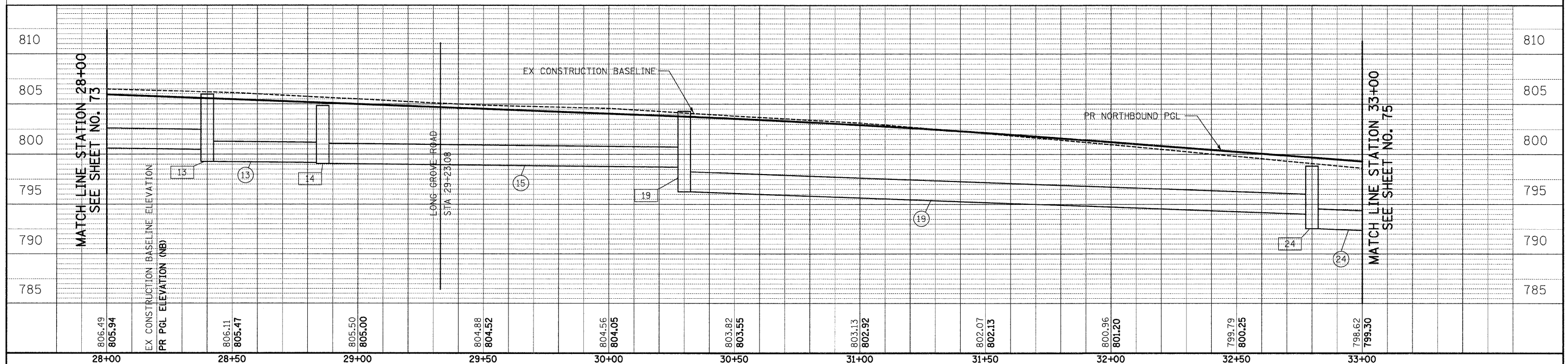
DATE	
BY	
SURVEYED	
PLOTTED	
TEMPLATE	
NOTE BOOK	
AREAS CHECKED	
NO.	

DATE	
BY	
SURVEYED	
PLOTTED	
TEMPLATE	
NOTE BOOK	
AREAS CHECKED	
NO.	



- 11 STA 28+40, 23.6' LT INLETS TA T24F&G RIM = 804.95 INV = 800.95 (E)
- 12 STA 28+40, 42.1' RT CB TA 4 DIA T24F&G RIM = 805.36 INV = 800.64 (W) INV = 800.54 (E)
- 13 STA 28+40, 49.5' RT MAN TA 5 DIA T1F CL RIM = 805.96 INV = 800.52 (W) INV = 800.47 (S) INV = 799.27 (N)
- 14 STA 28+81, 49.6' RT MAN TA 6 DIA T24F&G RIM = 804.76 INV = 800.77 (NE) INV = 799.07 (N) INV = 799.17 (S)
- 15 STA 28+94, 57.3' RT CB TC T24F&G RIM = 804.50 INV = 800.80 (SW)
- 16 STA 29+85, 70.1' RT CB TC T24F&G RIM = 804.42 INV = 800.90 (E)
- 17 STA 30+30, 21.1' LT INLETS TA T24F&G RIM = 803.27 INV = 799.75 (E)
- 18 STA 30+30, 42.3' RT CB TA 4 DIA T24F&G RIM = 803.57 INV = 799.45 (W) INV = 799.44 (E)
- 19 STA 30+27, 50.2' RT MAN TA 5 DIA T1F CL RIM = 804.28 INV = 798.72 (S) INV = 799.42 (NW) INV = 800.37 (SE) INV = 796.25 (N)
- 20 STA 32+61, 37.1' LT PRC FLAR END SEC 36 W/ GRATING INV = 792.61 (N)
- 21 STA 32+87, 31.3' LT MAN TA 5 DIA T1F CL RIM = 798.15 INV = 792.57 (SW) INV = 792.56 (N)
- 22 STA 32+80, 21.1' LT INLETS TA T24F&G RIM = 799.20 INV = 795.58 (E)
- 23 STA 32+80, 46.6' RT CB TA 4 DIA T24F&G RIM = 799.20 INV = 795.27 (W) INV = 794.56 (E)
- 24 STA 32+80, 54.4' RT MAN TA 5 DIA T1F CL RIM = 798.83 INV = 794.54 (W) INV = 794.01 (S) INV = 792.54 (N)

- 11 63' - STORM SEW CL A 1, 12" @ 0.50% TBF = 12 CU YD
- 12 3' - STORM SEW CL A 1, 12" @ 0.50% TBF = 1 CU YD
- 13 36' - STORM SEW CL A 1, 24" @ 0.28% TBF = 15 CU YD
- 14 10' - STORM SEW CL A 1, 12" @ 0.30% TBF = 2 CU YD
- 15 141' - STORM SEW CL A 1, 24" @ 0.25% TBF = 44 CU YD
- 16 40' - STORM SEW CL A 1, 12" @ 0.50% TBF = 10 CU YD
- 17 61' - STORM SEW CL A 1, 12" @ 0.50% TBF = 9 CU YD
- 18 5' - STORM SEW CL A 1, 12" @ 0.30% TBF = 1 CU YD
- 19 249' - STORM SEW CL A 1, 24" @ 0.90% TBF = 167 CU YD
- 20 17' - STORM SEW CL A 1, 36" @ 0.24% TBF = 1 CU YD
- 21 158' - STORM SEW CL A 1, 36" @ 1.40% TBF = 8 CU YD
- 22 65' - STORM SEW CL A 1, 12" @ 0.50% TBF = 9 CU YD
- 23 4' - STORM SEW CL A 1, 15" @ 0.50% TBF = 1 CU YD
- 24 165' - STORM SEW CL A 1, 24" @ 1.00% TBF = 1 CU YD

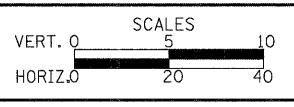


806.49 805.94	806.11 805.47	805.50 805.00	804.88 804.52	804.56 804.05	803.82 803.55	803.13 802.92	802.07 802.13	800.96 801.20	799.79 800.25	798.62 799.30
28+00	28+50	29+00	29+50	30+00	30+50	31+00	31+50	32+00	32+50	33+00

CIVILTECH
 450 E Devon Ave, Suite 300
 Itasca, Illinois 60143
 Tel: 630.773.3900 Fax: 630.773.3975
 www.civiltechinc.com

DESIGNED - JRR	REVISED -
DRAWN - JRR	REVISED -
CHECKED - RTM	REVISED -
DATE - 10/24/2011	REVISED -

STATE OF ILLINOIS
DEPARTMENT OF TRANSPORTATION



DRAINAGE AND UTILITY

SHEET NO. 3 OF 14 SHEETS STA. 28+00 TO STA. 33+00

F.A.U. RTE.	SECTION	COUNTY	TOTAL SHEETS	SHEET NO.
364	02-00051-08-WR	LAKE	188	74
CONTRACT NO. 63649				
FED. ROAD DIST. NO. 1 ILLINOIS FED. AID PROJECT				