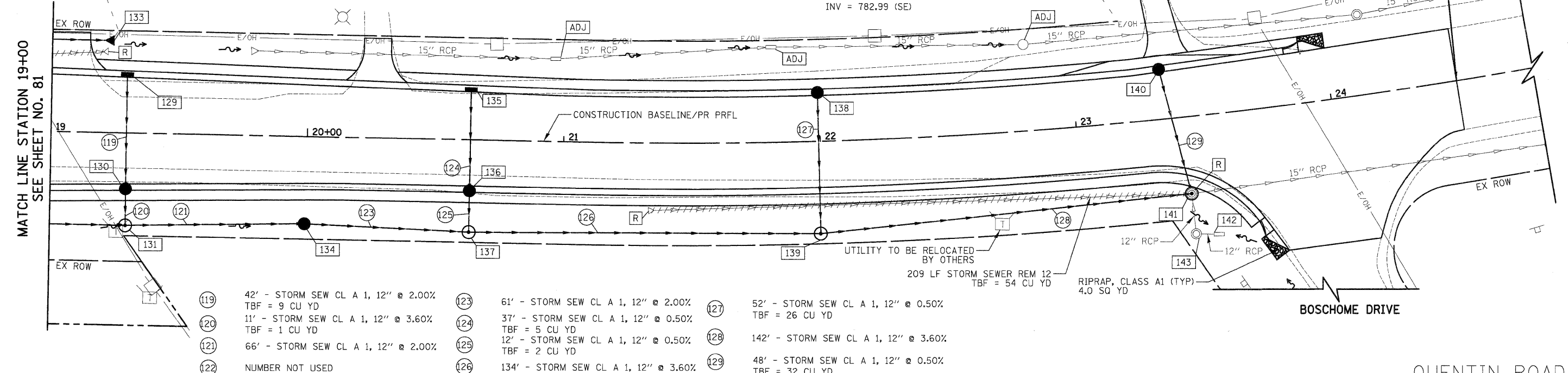


END ROADWAY IMPROVEMENTS
STA 24+50
(MATCH EXISTING)

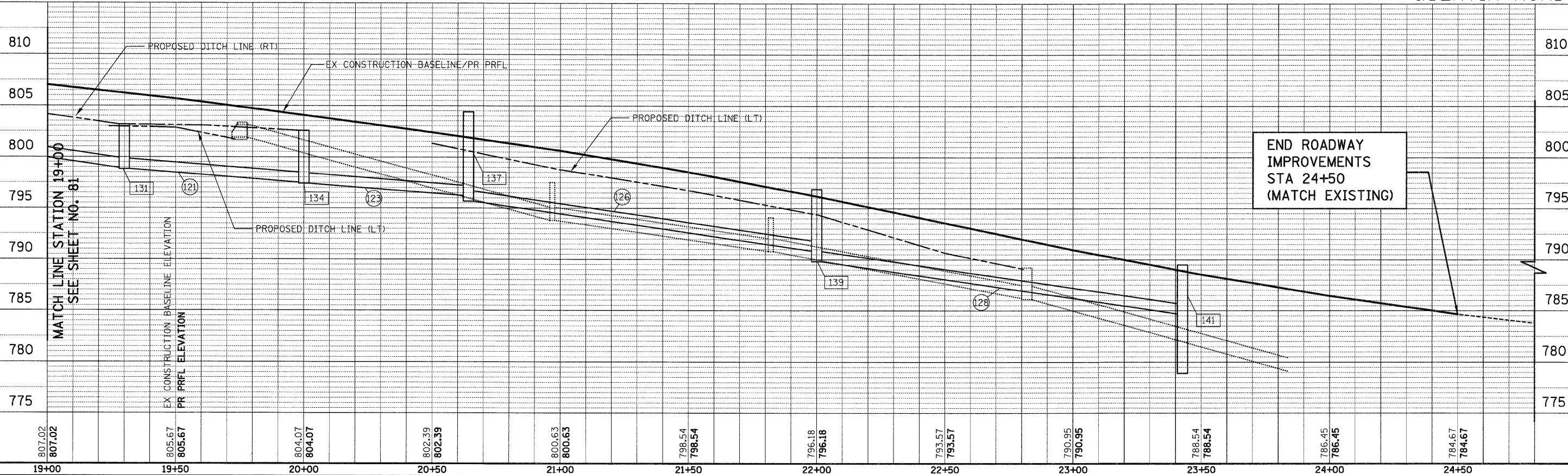
- 129 STA 19+30, 22.9' LT INLETS TA T24F&G RIM = 805.69 INV = 801.63 (SE)
- 130 STA 19+30, 21.7' RT CB TA 4 DIA T24F&G RIM = 806.00 INV = 800.79 (NW) INV = 800.69 (SE)
- 131 STA 19+30, 36.0' RT MAN TA 4 DIA T8G RIM = 803.16 INV = 800.29 (NW) INV = 798.82 (NE) INV = 798.92 (SW)
- 132 NUMBER NOT USED
- 133 STA 19+24.9, 36.0' LT PRC FLAR END SEC 15 INV = 802.97
- 134 STA 20+00, 34.0' RT CB TA 4 DIA T8G RIM = 802.57 INV = 797.50 (SW) INV = 797.40 (NE)
- 135 STA 20+64.15, 19.7' LT INLETS TA T24F&G RIM = 801.34 INV = 797.96 (SE)
- 136 STA 20+64.15, 19.9' RT CB TA 4 DIA T24F&G RIM = 802.02 INV = 797.78 (NW) INV = 797.68 (SE)
- 137 STA 20+64.15, 36.0' RT MAN TA 4 DIA T1F CL RIM = 804.39 INV = 795.67 (NE) INV = 796.18 (SW) INV = 797.62 (NW)
- 138 STA 22+00, 19.1' LT CB TC T24F&G RIM = 795.51 INV = 791.04 (SE)
- 139 STA 22+00, 36.0' RT MAN TA 4 DIA T1F CL RIM = 799.80 INV = 790.85 (SW) INV = 789.81 (NE) INV = 790.76 (NW)
- 140 STA 23+35, 20.6' LT CB TA 4 DIA T24F&G RIM = 788.63 INV = 782.42 (SE)
- 141 STA 23+42.6, 30.2' RT MAN TA 4 DIA T1F CL RIM = 789.48 INV = 784.70 (SW) INV = 778.90 (NE) INV = 782.18 (NW) INV = 782.99 (SE)
- 142 STA 23+51, 47.0' RT INLETS ADJUST RIM = 785.70 INV = 783.00 (SW)
- 143 STA 23+42.7, 46.0' RT MAN ADJUST RIM = 786.84 INV = 783.00 (NE) INV = 783.00 (NW)

DATE	
BY	
FINAL SURVEY	SURVEYED
NOTE BOOK	PLOTTED
NO.	TEMPLATE
	AREAS CHECKED



- 119 42' - STORM SEW CL A 1, 12" @ 2.00% TBF = 9 CU YD
- 120 11' - STORM SEW CL A 1, 12" @ 3.60% TBF = 1 CU YD
- 121 66' - STORM SEW CL A 1, 12" @ 2.00%
- 122 NUMBER NOT USED
- 123 61' - STORM SEW CL A 1, 12" @ 2.00%
- 124 37' - STORM SEW CL A 1, 12" @ 0.50% TBF = 5 CU YD
- 125 12' - STORM SEW CL A 1, 12" @ 0.50% TBF = 2 CU YD
- 126 134' - STORM SEW CL A 1, 12" @ 3.60%
- 127 52' - STORM SEW CL A 1, 12" @ 0.50% TBF = 26 CU YD
- 128 142' - STORM SEW CL A 1, 12" @ 3.60%
- 129 48' - STORM SEW CL A 1, 12" @ 0.50% TBF = 32 CU YD

DATE	
BY	
ORIGINAL SURVEY	SURVEYED
NOTE BOOK	PLOTTED
NO.	TEMPLATE
	AREAS CHECKED



END ROADWAY IMPROVEMENTS
STA 24+50
(MATCH EXISTING)