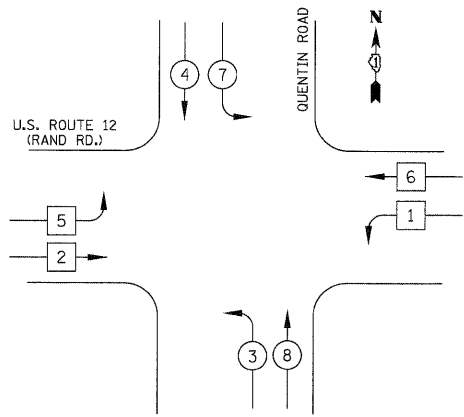


DATE	
BY	
FINAL SURVEY	
SURVEYED	
PLOTTED	
TEMPLATE	
NOTE BOOK	
AREAS CHECKED	
NO.	

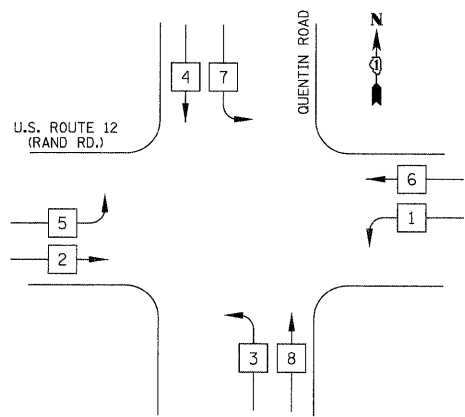
DATE	
BY	
ORIGINAL SURVEY	
SURVEYED	
PLOTTED	
TEMPLATE	
NOTE BOOK	
AREAS CHECKED	
NO.	

TEMPORARY CONTROLLER SEQUENCE
EXISTING CONDITIONS THROUGH S.O.C. STAGE II



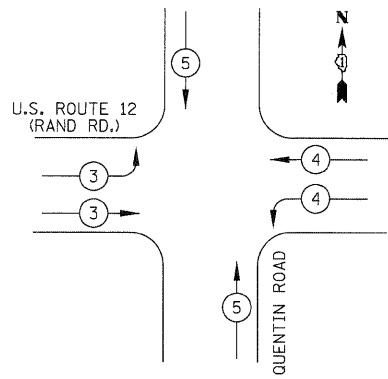
PHASE DESIGNATION DIAGRAM

TEMPORARY CONTROLLER SEQUENCE
S.O.C. STAGE III THROUGH FINAL CONDITIONS



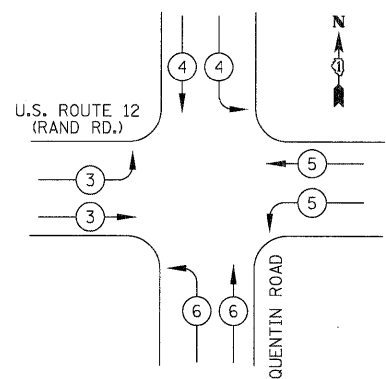
PHASE DESIGNATION DIAGRAM

TEMPORARY EMERGENCY VEHICLE PREEMPTION SEQUENCE
EXISTING CONDITIONS THROUGH S.O.C. STAGE II



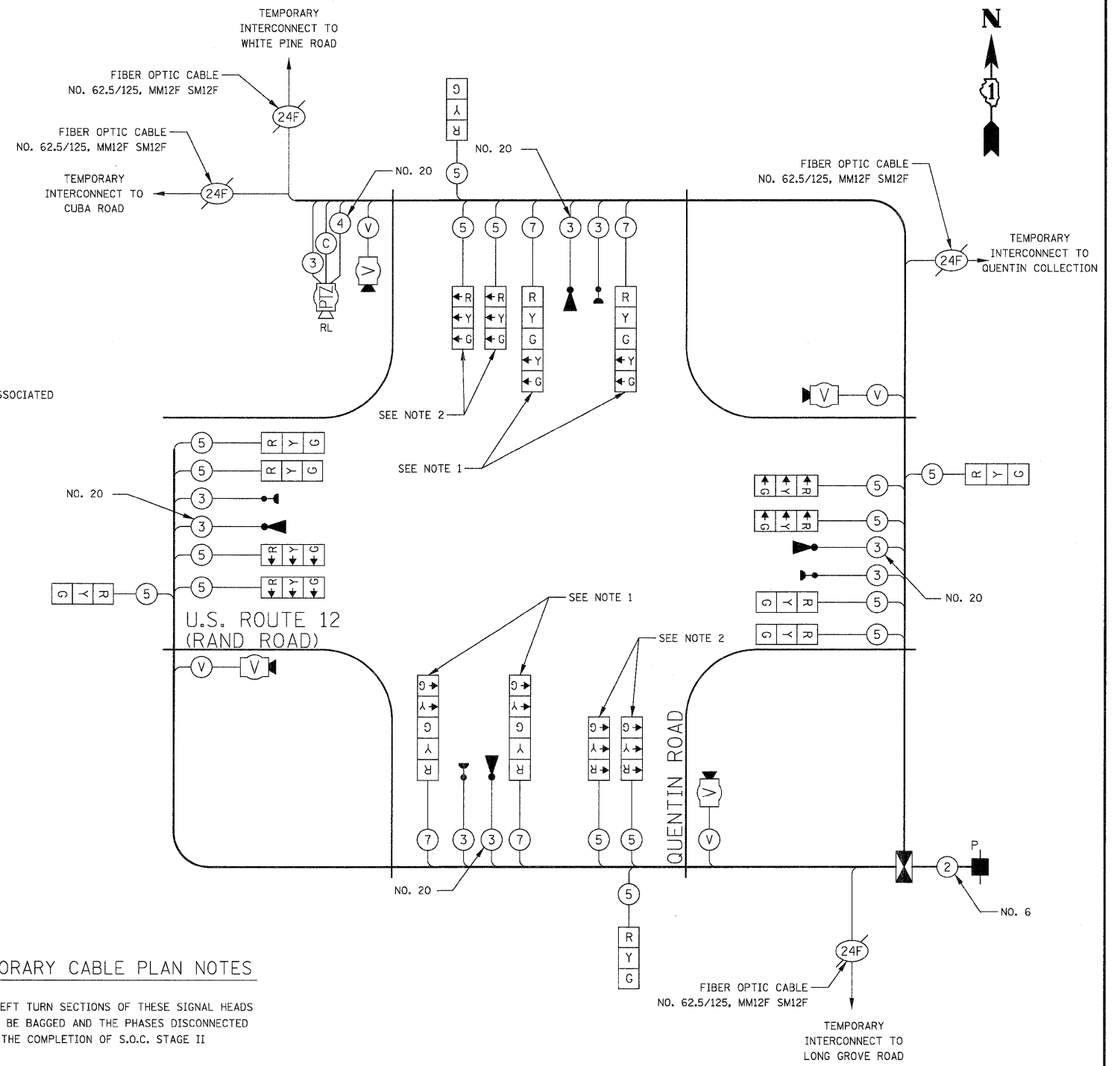
PROPOSED EMERGENCY VEHICLE PREEMPTORS				
EMERGENCY VEHICLE PREEMPTOR	3	4	5	
MOVEMENT	↘	↘	↘	↘

TEMPORARY EMERGENCY VEHICLE PREEMPTION SEQUENCE
S.O.C. STAGE III THROUGH FINAL CONDITIONS



PROPOSED EMERGENCY VEHICLE PREEMPTORS					
EMERGENCY VEHICLE PREEMPTOR	3	4	5	6	
MOVEMENT	↘	↘	↘	↘	↘

- LEGEND**
- DUAL ENTRY PHASE
 - SINGLE ENTRY PHASE
 - OVERLAP
 - PEDESTRIAN PHASE
 - NUMBER REFERS TO ASSOCIATED PHASE



TEMPORARY CABLE PLAN NOTES

1. THE LEFT TURN SECTIONS OF THESE SIGNAL HEADS SHALL BE BAGGED AND THE PHASES DISCONNECTED UPON THE COMPLETION OF S.O.C. STAGE II
2. THESE HEADS SHALL BE TURNED ON AND THE PHASES ACTIVE UPON THE START OF S.O.C. STAGE III

TEMPORARY CABLE PLAN
NOT TO SCALE

NOTE:
THE TRAFFIC SIGNAL CONTROLLER EQUIPMENT FOR THIS PROJECT SHALL BE "ECONOLITE" AND NTCIP COMPLIANT TO MATCH THE EXISTING ADJACENT SYSTEM.

I.D.O.T. TRAFFIC SIGNAL INSTALLATION ELECTRICAL SERVICE REQUIREMENTS					TOTAL WATTAGE
TYPE	NO. LAMPS	WATTAGE INCAND.	LED	% OPERATION	
SIGNAL (RED)	20		17	0.50	170
(YELLOW)	20		25	0.25	125
(GREEN)	20		15	0.25	75
ARROW	8		12	0.10	10
PED. SIGNAL			25	1.00	
CONTROLLER	1		100	1.00	100
VIDEO SYSTEM	1		150	1.00	150
FLASHER				0.50	
TOTAL =					630

ENERGY COSTS TO: ILLINOIS DEPARTMENT OF TRANSPORTATION
201 WEST CENTER COURT
SCHAUMBURG, IL 60196-1096
ENERGY SUPPLY: CONTACT: DONALD PESCE
PHONE: (847) 870-2057
COMPANY: COM ED

CIVILTECH
450 E Devon Ave, Suite 300
Itasca, Illinois 60143
Tel: 630.773.3900 Fax: 630.773.3975
www.civiltechinc.com

DESIGNED - BRD	REVISED -
DRAWN - BRD	REVISED -
CHECKED - JJE	REVISED -
DATE - 10/24/2011	REVISED -

STATE OF ILLINOIS
DEPARTMENT OF TRANSPORTATION

NO SCALE

TEMPORARY CABLE PLAN, TEMPORARY SEQUENCE OF OPERATION,
& TEMPORARY EMERGENCY VEHICLE PREEMPTION SEQUENCE
U.S. ROUTE 12 (RAND RD.) AT QUENTIN ROAD

SHEET NO. 1 OF 1 SHEETS

F.A.U. RTE.	SECTION	COUNTY	TOTAL SHEETS	SHEET NO.
364	02-00051-08-WR	LAKE	188	98
FED. ROAD DIST. NO. 1 ILLINOIS FED. AID PROJECT				CONTRACT NO. 63649