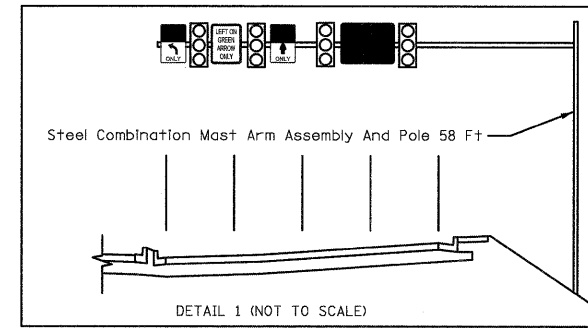
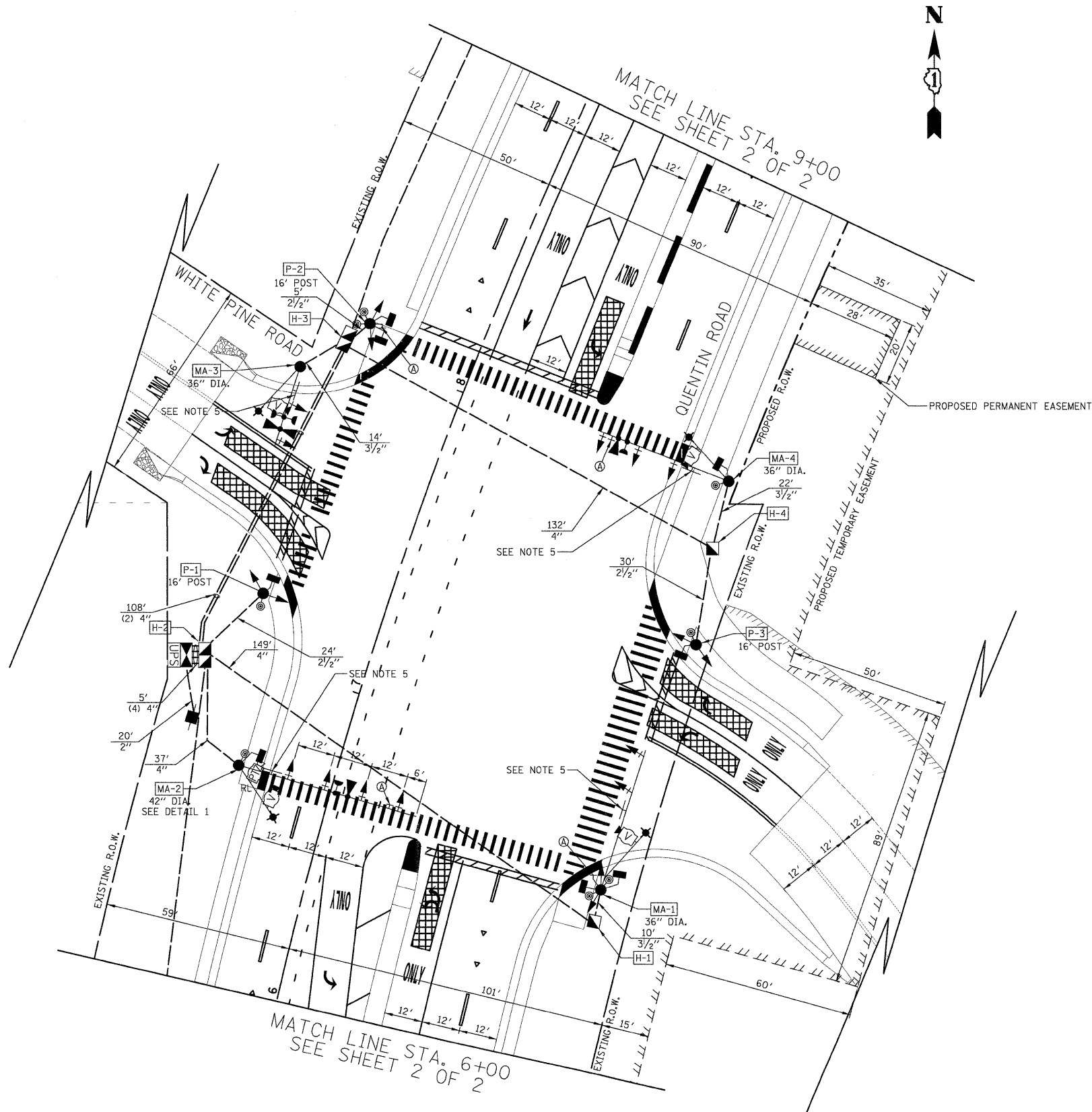


DATE	
BY	
DESIGNED	
DRAWN	
CHECKED	
DATE	

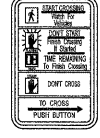
DATE	
BY	
DESIGNED	
DRAWN	
CHECKED	
DATE	



SEE PAVEMENT MARKING AND SIGNING PLAN FOR MORE INFORMATION



R 10-5  
24"x30"  
(TYP.)  
SIGN PANEL  
TYPE 1  
(4 REQUIRED)



R 10-3e  
9"x15"  
(TYP.)  
SIGN PANEL  
(REQUIRED AT  
EACH PEDESTRIAN  
PUSH BUTTON)  
(SEE NOTE 6)

**TRAFFIC SIGNAL NOTES**

1. ALL STATIONS AND OFFSETS ARE DIMENSIONED FROM THE CENTERLINE OF QUENTIN ROAD.
2. THE VIDEO VEHICLE DETECTION SYSTEM'S MANUFACTURER'S REPRESENTATIVE SHALL PROVIDE ASSISTANCE IN ALL CABLE TERMINATIONS.
3. ALL DETECTION ZONES ARE APPROXIMATE. THE EXACT LOCATIONS SHALL BE DETERMINED AND LAID OUT BY LAKE COUNTY DIVISION OF TRANSPORTATION PERSONNEL.
4. THE EXISTING REMOTE-CONTROLLED VIDEO SYSTEM SHALL BE RELOCATED TO THE PROPOSED SIGNAL.
5. L.E.D. INTERNALLY ILLUMINATED STREET NAME SIGN.
6. THE R10-3E PEDESTRIAN PUSH BUTTON SIGNS ARE TO BE INCLUDED IN THE PAY ITEM "PEDESTRIAN PUSH-BUTTON".

STRUCTURE	STATION	OFFSET	POSSIBLE UTILITY CONFLICTS
H-1	6+50	91' RT	NONE
H-2	6+97	50' LT	NONE
H-3	8+03	40' LT	EXISTING GAS LINE
H-4	7+81	91' RT	NONE
P-1	7+21	38' LT	EXISTING GAS LINE
P-2	8+10	35' LT	EXISTING GAS LINE
P-3	7+49	96' RT	NONE
MA-1	6+61	90' RT	NONE
MA-2	6+68	30' LT	NONE
MA-3	7+90	51' LT	EXISTING OVERHEAD LINES
MA-4	8+04	88' RT	NONE

SCHEDULE OF COMBINATION MAST ARM ASSEMBLY AND POLES	
MA-1	46' MAST ARM, 20' LUMINAIRE ARM, 45' LUMINAIRE MOUNTING HEIGHT
MA-2	58' MAST ARM, 20' LUMINAIRE ARM, 45' LUMINAIRE MOUNTING HEIGHT
MA-3	26' MAST ARM, 20' LUMINAIRE ARM, 45' LUMINAIRE MOUNTING HEIGHT
MA-4	44' MAST ARM, 20' LUMINAIRE ARM, 45' LUMINAIRE MOUNTING HEIGHT

NOTE:  
THE TRAFFIC SIGNAL CONTROLLER EQUIPMENT FOR THIS PROJECT SHALL BE "ECONOLITE" AND NTCIP COMPLIANT TO MATCH THE EXISTING ADJACENT SYSTEM.

RESTORATION OF WORK AREA.  
RESTORATION OF THE TRAFFIC SIGNAL WORK AREA SHALL BE INCIDENTAL TO THE RELATED PAY ITEM SUCH AS FOUNDATION, CONDUIT, HANDHOLE, TRENCH AND BACKFILL, ETC., AND NO EXTRA COMPENSATION SHALL BE ALLOWED. ALL ROADWAY SURFACES SUCH AS SHOULDER, MEDIAN, SIDEWALKS, PAVEMENT, ETC. SHALL BE REPLACED IN KIND. ALL DAMAGE TO MOWED LAWNS SHALL BE REPLACED WITH AN APPROVED SOD, AND ALL DAMAGE TO UNMOWED FIELDS SHALL BE SEEDING IN ACCORDANCE WITH STANDARD SPECIFICATIONS 252 AND 250 RESPECTIVELY.