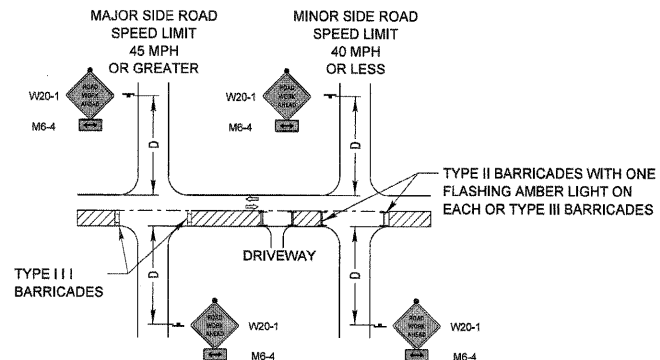


**TYPICAL APPLICATION OF TRAFFIC CONTROL DEVICES
for HIGHWAY CONSTRUCTION, CONTRACT MAINTENANCE
and UTILITY OPERATIONS**



GENERAL NOTE:

This Standard is used where at anytime, day or night, any vehicle, equipment, workers or their activities encroach on the pavement or where construction requires lane closures.

DESIGN NOTES:

- For a side road with a speed limit of 40 mph or less, the closed portion of the main route shall be protected by blocking with Type II or Type III barricades, 1/2 of the cross section of the closed portion of the roadway.
- For a side road with a speed limit of 45 mph or greater, the closed portion of the main route shall be protected by blocking with Type III barricades, 1/2 of the cross section of the closed portion of the roadway.
- All W20-1 "ROADWORK AHEAD" signs shall be 48" x 48" with fluorescent orange reflective sheeting with an amber Type A flashing light mounted on the sign.
- When the side road lies between the beginning of the mainline signing and the work zone, a M6-1 Single Headed Arrow shall be used in lieu of the M6-4 Double Headed Arrow.
- For a lane closure on a side road or driveway, use the applicable portions of the appropriate Highway Standard or Traffic Control Detail. The spacing of the signs and barricades shall be adjusted for field conditions as directed by the engineer. The directional arrow shall be covered or removed when no longer consistent with the side road lane closure.
- Advance warning signs shall be omitted on driveways unless otherwise noted.
- The traffic control and protection for side roads and intersections shall be included in the contract unit lump sum price for "TRAFFIC CONTROL AND PROTECTION."

SYMBOLS

- WORK AREA
- SIGN ON PORTABLE OR PERMANENT SUPPORT
- TYPE II BARRICADE W/TYPE A FLASHING LIGHT
- TYPE III BARRICADE

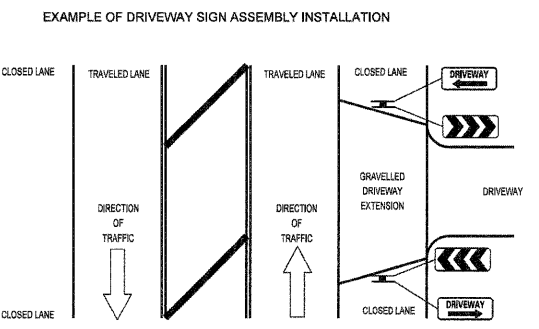
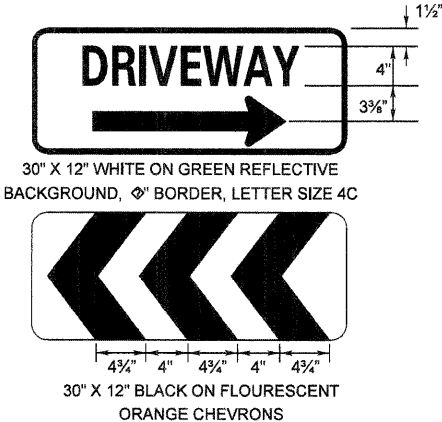
ADVANCE WARNING SIGN SPACING TABLE

POSTED SPEED LIMIT	DISTANCE BETWEEN SIGNS "D"
40 MPH or less	200 FEET
45-50 MPH	350 FEET
55 MPH	500 FEET

**MODIFIED IDOT DISTRICT ONE
SIDE ROAD DETAIL**

REVISIONS	DATE	APPROVED BY: ANTHONY KHAWAJA
Title Block Revision	8/1/09	DATE: APRIL 1, 2007
Reformat LCDOT Standard	7/15/10	

**TRAFFIC CONTROL and PROTECTION
for SIDEROADS, INTERSECTIONS
and DRIVEWAYS**



30" X 12" BLACK ON FLOURESCENT
ORANGE CHEVRONS

TEMPORARY CONSTRUCTION INFORMATION SIGNING NOTES:

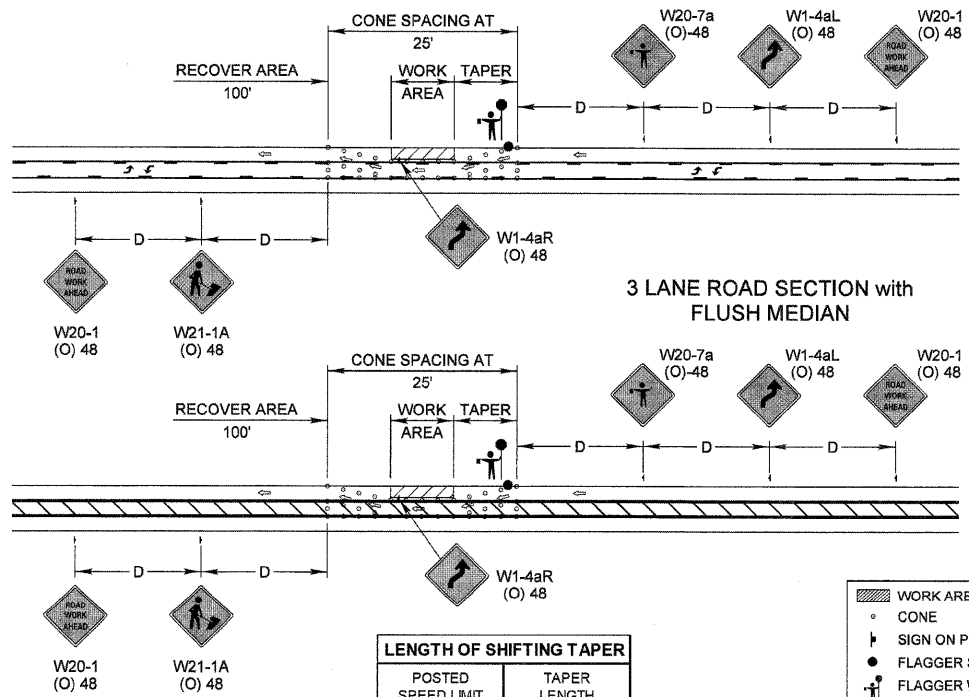
- The driveway and chevron signs shall be mounted back to back on the near side of the roadway where the entrance is located. There will be two sign assemblies per driveway.
- Temporary construction information signs shall be post mounted 7" above the near edge of pavement and shall be a minimum of 6' beyond the edge of the nearest traveled lane, or as directed by the Engineer.
- The retroreflective sign face shall be a minimum of Type "A" material.
- The temporary construction information signs shall be removed or relocated when the Engineer determines the signs to be no longer necessary.
- Existing traffic control signs and messages that are in conflict with the proposed maintenance of traffic shall be covered or modified with a temporary overlay as shown in the plans and/or as directed by the Engineer.
- Install additional temporary sign panel assemblies as shown in the plans and/or directed by the Engineer.

REVISIONS	DATE	APPROVED BY: A KHAWAJA
Revised Signs & Text	1/1/09	DATE: APRIL 1, 2007
Text Update	7/15/11	

**TEMPORARY CONSTRUCTION
INFORMATION SIGNS**
SHEET 1 OF 2

**TYPICAL APPLICATION OF TRAFFIC CONTROL DEVICES
for HIGHWAY CONSTRUCTION, CONTRACT MAINTENANCE
and UTILITY OPERATIONS**

**3 LANE ROAD SECTION with
2-WAY LEFT TURN LANE**



GENERAL NOTE:

This Standard is used where during the day only, any vehicle, equipment, workers or their activities encroach on a 3 lane, two way pavement requiring the closure of one traffic lane.

SYMBOLS

- WORK AREA
- CONE
- SIGN ON PORTABLE OR PERMANENT SUPPORT
- FLAGGER STATION
- FLAGGER WITH SLOW PADDLE

LENGTH OF SHIFTING TAPER

POSTED SPEED LIMIT	TAPER LENGTH
30 MPH	100'
35 MPH	125'
40 MPH	150'
45 MPH	275'
50 MPH	300'
55 MPH	325'

POSTED SPEED LIMIT	DISTANCE BETWEEN SIGNS "D"
40 MPH or less	200 FEET
45-50 MPH	350 FEET
55 MPH	500 FEET

REVISIONS	DATE	APPROVED BY: A KHAWAJA
Title Block Revision	8/1/09	DATE: APRIL 1, 2007
Reformat LCDOT Standard	7/15/10	

**TYPICAL LANE CLOSURE
3 LANE ROAD SECTION**



48" X 36"
BLACK ON FLOURESCENT ORANGE
REFLECTIVE BACKGROUND
1" BORDER WITH 1/4" INSET
LETTER SIZE 6D
*LETTER SIZE 6E BOLD

REVISIONS	DATE	APPROVED BY: A KHAWAJA
Revised Signs & Text	1/1/09	DATE: APRIL 1, 2007
Text Update	7/15/11	

**TEMPORARY CONSTRUCTION
INFORMATION SIGNS**
SHEET 2 OF 2

CIVILTECH
450 E Devon Ave, Suite 300
Itasca, Illinois 60143
Tel: 630.773.3900 Fax: 630.773.3975
www.civiltechinc.com

DESIGNED - JRR	REVISED -
DRAWN - JRR	REVISED -
CHECKED - RTM	REVISED -
DATE - 10/24/2011	REVISED -

**STATE OF ILLINOIS
DEPARTMENT OF TRANSPORTATION**

SHEET NO. 5 OF 9 SHEETS STA. TO STA.

F.A.U. RTE.	SECTION	COUNTY	TOTAL SHEETS	SHEET NO.
364	02-00051-08-WR	LAKE	188	184

CONTRACT NO. 63649
FED. ROAD DIST. NO. 1 ILLINOIS FED. AID PROJECT