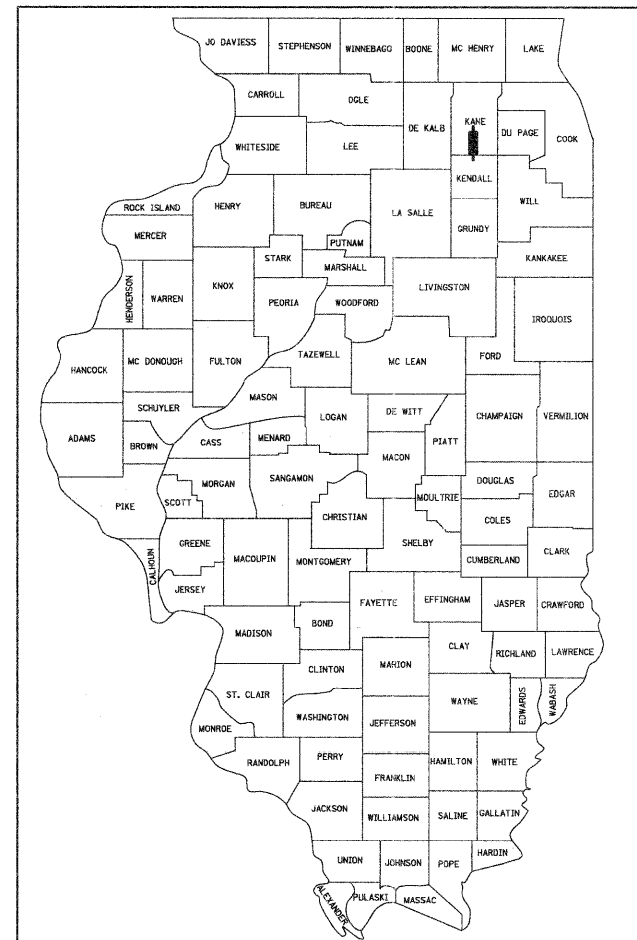


PROGRAM AND OFFICE ENGINEER: CHARLES F. RIDDLE, P.E. 847-705-4406 SCHAUMBURG, IL
 CONSULTING ENGINEER: ENGINEERING ENTERPRISES, INC. CONTACT: JAMES R. LENZINI 630-466-6700

F.A.P. RTE.	SECTION	COUNTY	TOTAL SHEETS	SHEET NO.
326	10-00023-00-ES	KANE	70	1

CONTRACT NO. 63700

STATE OF ILLINOIS
DEPARTMENT OF TRANSPORTATION
DIVISION OF HIGHWAYS
PLANS FOR PROPOSED
FEDERAL AID HIGHWAY
FAU 3900 (CROSS STREET)
AT FAP 326 (IL 47)
MAIN STREET TO JOY STREET
INTERSECTION WIDENING/SIGNAL MODIFICATION
SECTION: 10-00023-00-ES
PROJECT NUMBER: M-9003(717)
VILLAGE OF SUGAR GROVE
KANE COUNTY
JOB NUMBER: C-91-116-11



LOCATION OF SECTION INDICATED THUS: - [thick line] -

PROJECT LOCATED
IN THE VILLAGE OF
SUGAR GROVE

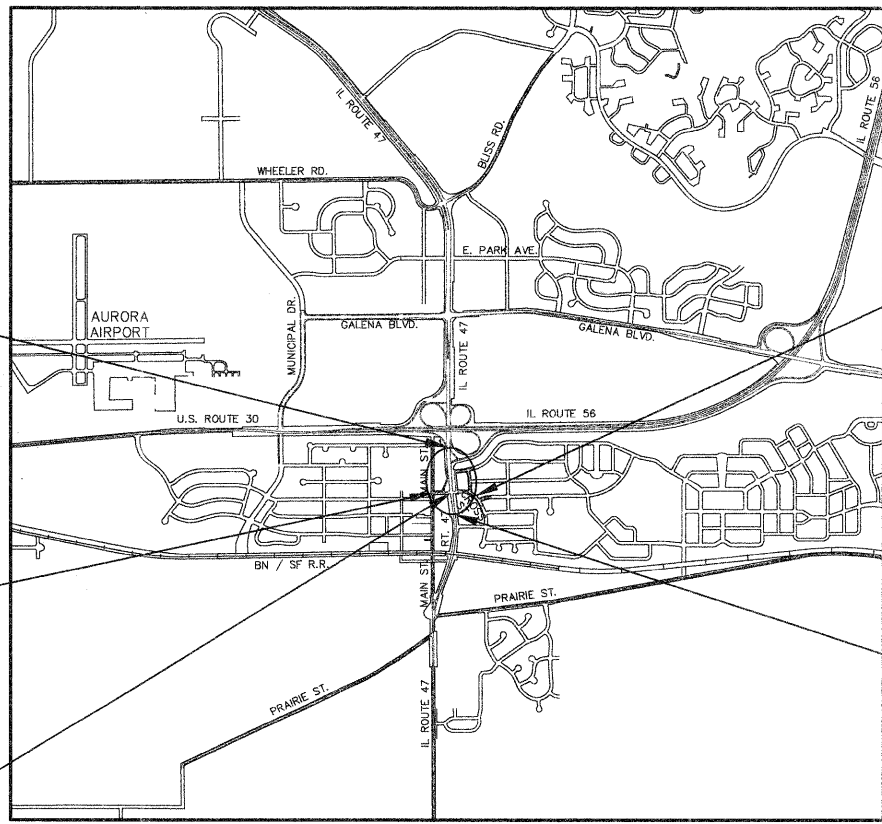
PROJECT ENDS
STA 111+25
CROSS STREET

PROJECT BEGINS
STA 258+20.87
IL ROUTE 47

PROJECT ENDS
STA 267+12.44
IL ROUTE 47

PROJECT BEGINS
STA 101+16
CROSS STREET

PAVING OMISSION
STA 104+68
TO STA 105+33
CROSS STREET



NE 1/4 SECTION 21, T38N, R7E, 3RD PM, SUGAR GROVE TOWNSHIP

LOCATION MAP
SCALE: 1" = 2,000'

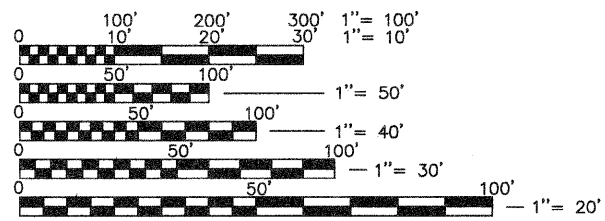
CROSS STREET GROSS LENGTH = 1,009 FEET (0.191 MILE)
 CROSS STREET PAVING OMISSION STA 104+68 TO STA 105+33 = 65 FEET (0.012 MILE)
 CROSS STREET NET LENGTH = 944 FEET (0.179 MILE)
 IL 47 GROSS & NET LENGTH = 891.57 FEET (0.169 MILE)
 TOTAL GROSS LENGTH OF PROJECT = 1,900.57 FEET (0.360 MILE)
 TOTAL NET LENGTH OF PROJECT = 1,835.57 FEET (0.348 MILE)

Engineering Enterprises, Inc.
 CONSULTING ENGINEERS
 52 Wheeler Road
 Sugar Grove, Illinois 60554
 Phone: (630) 466-6700

FOR INDEX OF SHEETS,
PAVEMENT DESIGN AND
HIGHWAY STANDARDS
SEE SHEET NO. 2

TRAFFIC DATA	2022 ADT	POSTED/DESIGN SPEED
IL 47	25,640	45/45
CROSS STREET	4,605	UNMARKED/30

DESIGN DESIGNATION
 FAP 326 IL 47
 3020(22) OTHER PRINCIPAL ARTERIAL 4.53(FD-20)
 FAU 3900 CROSS STREET
 URBAN COLLECTOR (WEST OF IL 47)
 LOCAL ROAD (EAST OF IL 47)
 2580(22) URBAN COLLECTOR/LOCAL ROAD 0.5(FD-20)



FULL SIZE PLANS HAVE BEEN PREPARED USING STANDARD ENGINEERING SCALES, REDUCED SIZED PLANS WILL NOT CONFORM TO STANDARD SCALES, IN MAKING MEASUREMENTS ON REDUCED PLANS, THE ABOVE SCALES MAY BE USED.

JULIE
 JOINT
 UTILITY
 LOCATION
 INFORMATION FOR
 EXCAVATION
 CALL 811

Know what's below.
Call before you dig.

CONTRACT NO. 63700

DATE: 1/30/12
 BY: JAMES R. LENZINI
 LICENSE EXPIRES: NOVEMBER 30, 2013

STATE OF ILLINOIS
DEPARTMENT OF TRANSPORTATION
DIVISION OF HIGHWAYS

APPROVED: 1/30/12
VILLAGE OF SUGAR GROVE, DIRECTOR OF PUBLIC WORKS

PASSED: FEBRUARY 14, 2012

DISTRICT ENGINEER OF LOCAL ROADS & STREETS

RELEASING FOR BID BASED ON LIMITED REVIEW: FEBRUARY 14, 2012

DEPUTY DIRECTOR OF HIGHWAYS, REGION 1 ENGINEER

PRINTED BY THE AUTHORITY OF THE STATE OF ILLINOIS

Plotted: January 24, 2012 @ 1:15 PM By: Kris Pung - Tab: 01 Cover - 22x34

Path: H:\SUGAR\03\002\DWG\DWG_FINAL_ENG_SG1002-CR