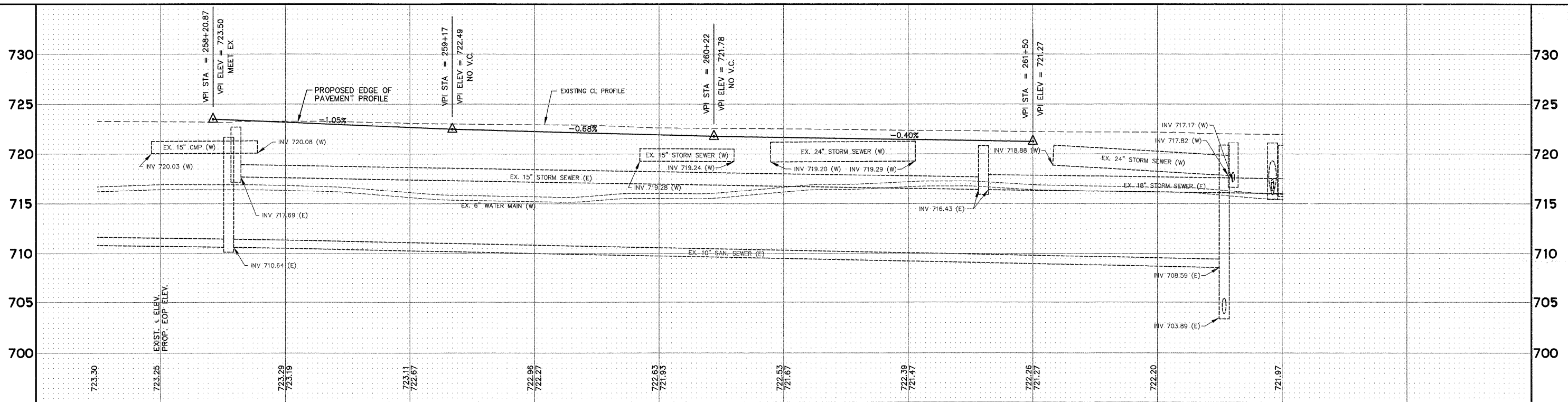


NOTE:
 1. THE GENERAL CONTRACTOR IS REQUIRED TO HIRE AN ENVIRONMENTAL FIRM WITH AT LEAST FIVE (5) DOCUMENTED LEAKING UNDERGROUND STORAGE TANK CLEANUPS OR THAT IS PRE-QUALIFIED IN HAZARDOUS WASTE BY THE DEPARTMENT TO REMEDIATE THE SOIL CONTAMINATION AND MONITOR FOR WORKER PROTECTION.

CURVE 8
 PI = 265+21.28
 PC = 259+06.52
 PT = 271+36.04
 D = 00°28'00"
 Δ = 05°44'16"
 R = 12277.70'
 L = 1229.53
 T = 615.28
 E = 15.41'

IL ROUTE 47

SCALE:
 HORIZONTAL 1" = 20'
 VERTICAL 1" = 5'



Printed: February 20, 2012 @ 10:47 AM By: Kris Pung - Tab: 15 - 47 Profile - 22x34
 Copyright © 2012 ENGINEERING ENTERPRISES, INC.

Engineering Enterprises, Inc. CONSULTING ENGINEERS 52 Wheeler Road Sugar Grove, Illinois 60554 630.466.8700 / www.eelweb.com		USER NAME = PLOT SCALE = PLOT DATE =	DESIGNED - DRAWN - CHECKED - DATE -	REVISED - REVISED - REVISED - REVISED -	STATE OF ILLINOIS DEPARTMENT OF TRANSPORTATION		IL ROUTE 47 - PLAN AND PROFILE		F.A.P. RTE. = 326 SECTION = 10-00023-00-ES COUNTY = KANE TOTAL SHEETS = 70 SHEET NO. = 15 CONTRACT NO. 63700
SCALE: 1"=20'					SHEET NO. 1 OF 7 SHEETS		STA. 257+75 TO STA. 261+50		FED. ROAD DIST. NO. 1 ILLINOIS FED. AID PROJECT NO. M-9003(717)