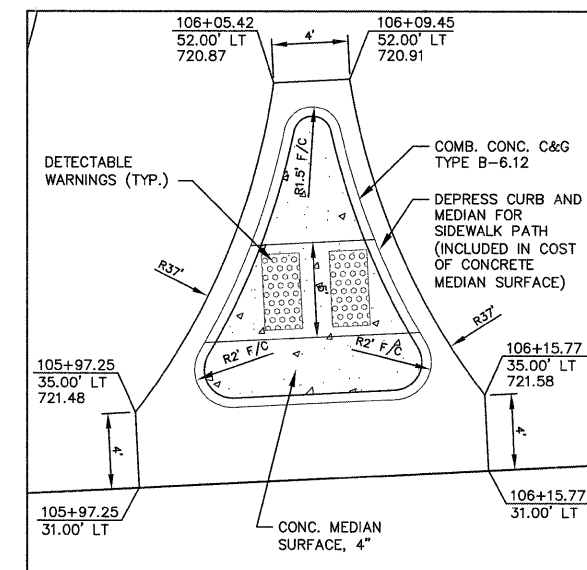
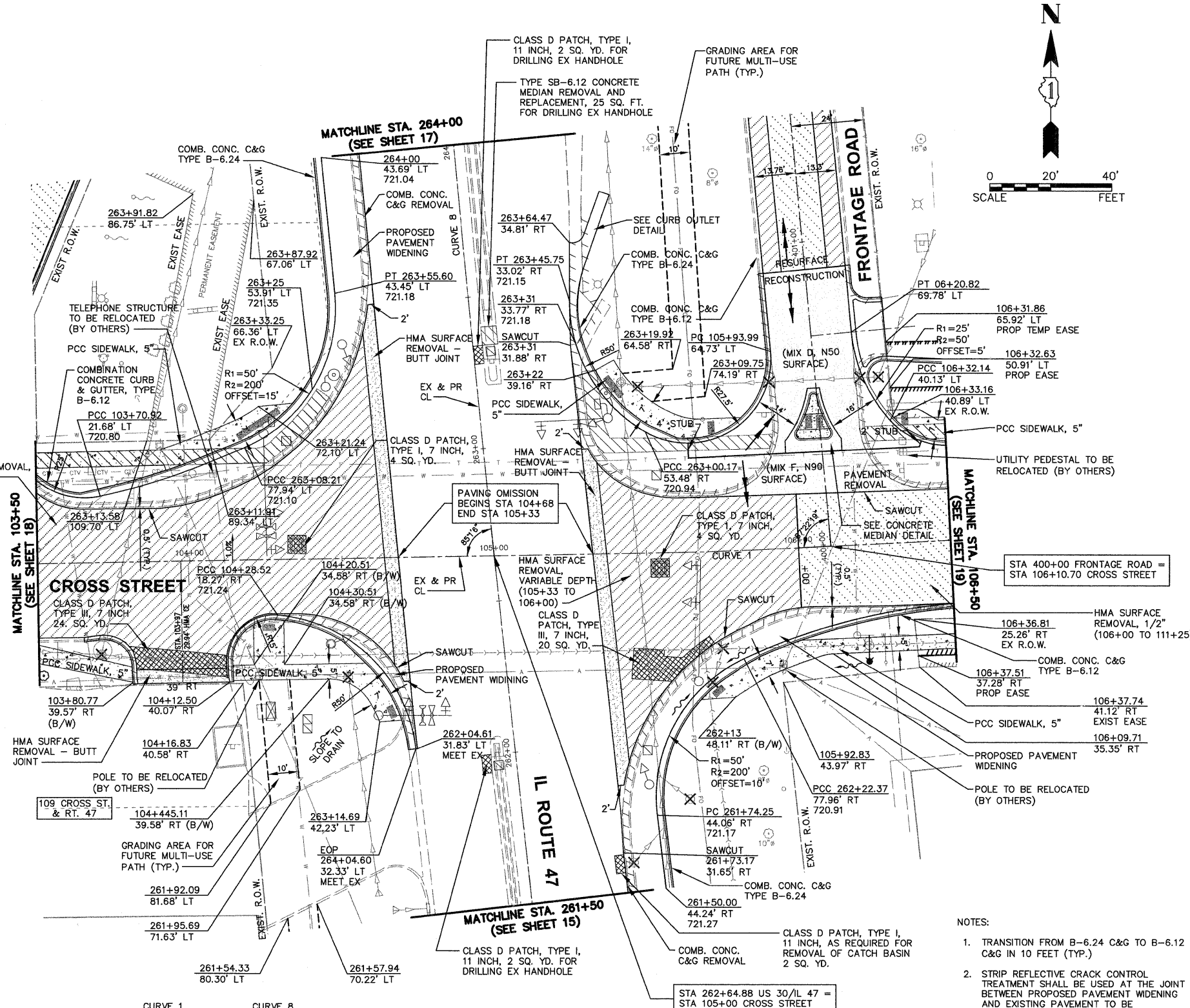
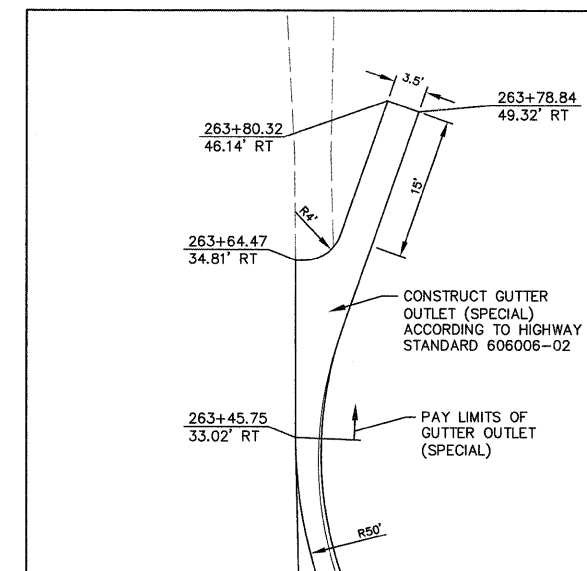


Plotted: February 20, 2012 @ 10:48 AM By: Kris Pung - Tab: 16 - 47 Intersection - 22x34



CONCRETE MEDIAN DETAIL
SCALE: 1"=5'



GUTTER OUTLET (SPECIAL) DETAIL
SCALE: 1"=10'

- NOTES:
1. TRANSITION FROM B-6.24 C&G TO B-6.12 C&G IN 10 FEET (TYP.)
 2. STRIP REFLECTIVE CRACK CONTROL TREATMENT SHALL BE USED AT THE JOINT BETWEEN PROPOSED PAVEMENT WIDENING AND EXISTING PAVEMENT TO BE RESURFACED (TYPICAL ON CROSS STREET)
 3. THE GENERAL CONTRACTOR IS REQUIRED TO HIRE AN ENVIRONMENTAL FIRM WITH AT LEAST FIVE (5) DOCUMENTED LEAKING UNDERGROUND STORAGE TANK CLEANUPS OR THAT IS PRE-QUALIFIED IN HAZARDOUS WASTE BY THE DEPARTMENT TO REMEDIATE THE SOIL CONTAMINATION AND MONITOR FOR WORKER PROTECTION.

| CURVE 1 | | CURVE 8 | |
|----------------|-----------------|----------------|----------------|
| PI = 105+73.87 | PC = 105+57.95 | PI = 265+21.28 | PC = 259+06.52 |
| PT = 105+89.79 | Δ = 5°43'46.49" | PT = 271+36.04 | Δ = 00°28'00" |
| D = 1'49'28" | R = 1000' | Δ = 05°44'16" | R = 12277.70' |
| L = 31.84' | T = 15.92' | L = 1229.53' | L = 615.28' |
| E = 0.13' | | T = 615.28' | E = 15.41' |

Engineering Enterprises, Inc.
CONSULTING ENGINEERS
52 Wheeler Road
Sugar Grove, Illinois 60554
630.466.6700 / www.eeiweb.com

| | | |
|--------------|------------|-----------|
| USER NAME = | DESIGNED - | REVISED - |
| PLOT SCALE = | DRAWN - | REVISED - |
| PLOT DATE = | CHECKED - | REVISED - |
| | DATE - | REVISED - |

**STATE OF ILLINOIS
DEPARTMENT OF TRANSPORTATION**

| | |
|--|-------------------------|
| IL ROUTE 47 AND CROSS STREET - PLAN AND PROFILE | |
| SCALE: 1"=20' | SHEET NO. 2 OF 7 SHEETS |
| STA. 261+50 | TO STA. 264+00 |

| | | | | |
|----------------------------------|------------------------|-------------|--------------------------------|--------------|
| F.A.P. RTE. 326 | SECTION 10-00023-00-ES | COUNTY KANE | TOTAL SHEETS 70 | SHEET NO. 16 |
| CONTRACT NO. 63700 | | | FED. ROAD DIST. NO. 1 ILLINOIS | |
| FED. AID PROJECT NO. M-9003(717) | | | | |