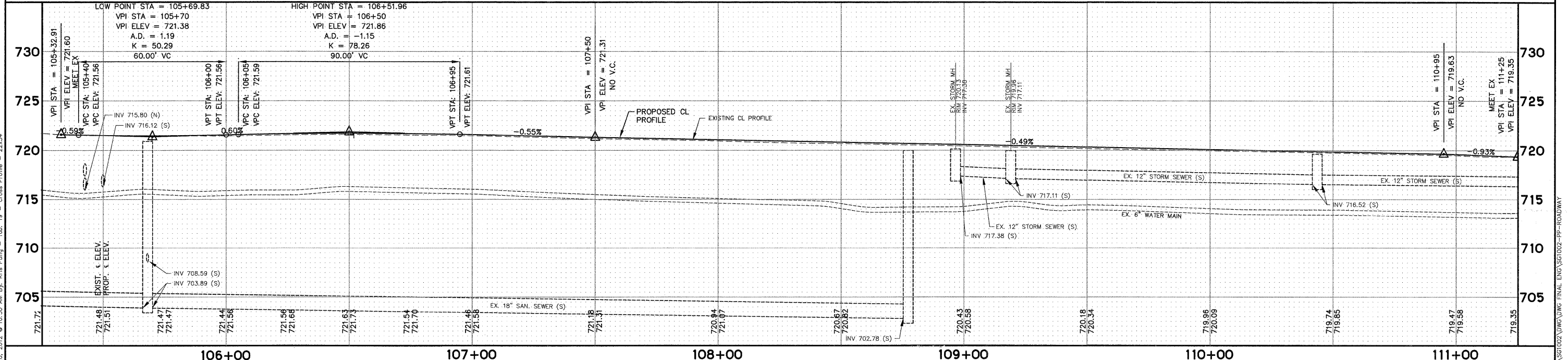
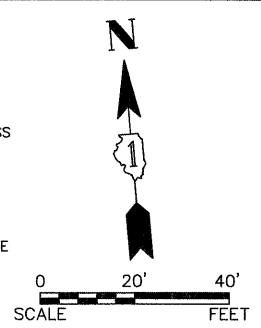


- NOTES:
1. STRIP REFLECTIVE CRACK CONTROL TREATMENT SHALL BE USED AT THE JOINT BETWEEN PROPOSED PAVEMENT WIDENING AND EXISTING PAVEMENT TO BE RESURFACED (TYPICAL ON CROSS STREET)
  2. THE GENERAL CONTRACTOR IS REQUIRED TO HIRE AN ENVIRONMENTAL FIRM WITH AT LEAST FIVE (5) DOCUMENTED LEAKING UNDERGROUND STORAGE TANK CLEANUPS OR THAT IS PRE-QUALIFIED IN HAZARDOUS WASTE BY THE DEPARTMENT TO REMEDIATE THE SOIL CONTAMINATION AND MONITOR FOR WORKER PROTECTION.



<p>Engineering Enterprises, Inc.          CONSULTING ENGINEERS          52 Wheeler Road          Sugar Grove, Illinois 60554          630.466.6700 / www.eeiweb.com</p>	USER NAME =	DESIGNED -	REVISED -	<b>STATE OF ILLINOIS</b> <b>DEPARTMENT OF TRANSPORTATION</b>	<b>CROSS STREET - PLAN AND PROFILE</b>	F.A.P. R.T.E. =	SECTION	COUNTY	TOTAL SHEETS	SHEET NO.	
	PLOT SCALE =	DRAWN -	REVISED -			326	10-00023-00-ES	KANE	70	19	
	PLOT DATE =	CHECKED -	REVISED -			SCALE: 1" = 20'			SHEET NO. 5 OF 7 SHEETS		
		DATE -	REVISED -			STA. 105+25 TO STA. 111+25			FED. ROAD DIST. NO. 1 [ILLINOIS] FED. AID PROJECT NO. M-9003(717)		
CONTRACT NO. 63700											

Plotted: February 20, 2012 @ 10:50 AM By: Kris Pung - Tab: 19 - Cross Profile - 22x34  
 COPYRIGHT © 2012 ENGINEERING ENTERPRISES, INC.

Path: H:\S\SKR\03\SS1002\DWG\DWG\_FINAL\_ENG\SSG002-PP-ROADWAY