

Plotted: February 20, 2012 @ 11:05 AM By: Kris Pung - Tab: 59 - 47 Section - 22x34

Engineering Enterprises, Inc.
 CONSULTING ENGINEERS
 52 Wheeler Road
 Sugar Grove, Illinois 60554
 630.466.6700 / www.eeiweb.com

USER NAME =
 PLOT SCALE =
 PLOT DATE =

DESIGNED -
 DRAWN -
 CHECKED -
 DATE -

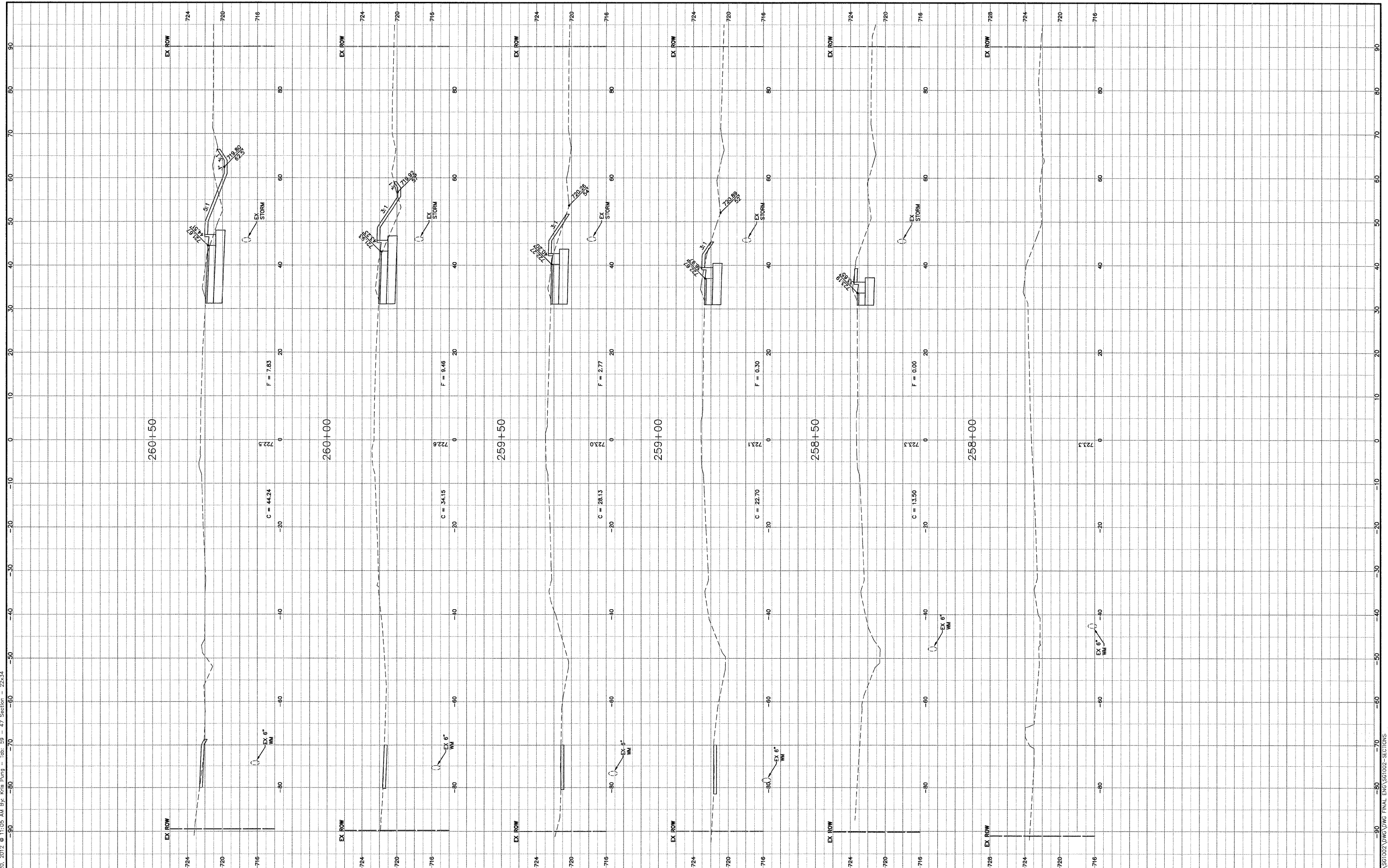
REVISED -
 REVISED -
 REVISED -
 REVISED -

STATE OF ILLINOIS
 DEPARTMENT OF TRANSPORTATION

IL. ROUTE 47 - CROSS SECTIONS

SCALE: H¹/₄"=10' - V¹/₄"=5' SHEET NO. 1 OF 12 SHEETS STA. 258+00 TO STA. 260+50

F.A.P. RTE. 326	SECTION 10-00023-00-ES	COUNTY KANE	TOTAL SHEETS 70	SHEET NO. 59
FED. ROAD DIST. NO. 1 ILLINOIS			CONTRACT NO. 63700	
FED. AID PROJECT NO. M-9003(717)				



Path: H:\S05\PROJ\1002\DWG\DWG_FINAL\ENG\551002-SECTIONS