

Plotted: February 20, 2012 @ 11:01 AM By: Eric Pung - Tab: 63 - Cross Section - 22-534

Engineering Enterprises, Inc.
 CONSULTING ENGINEERS
 52 Wheeler Road
 Sugar Grove, Illinois 60554
 630.466.6700 / www.eeiweb.com

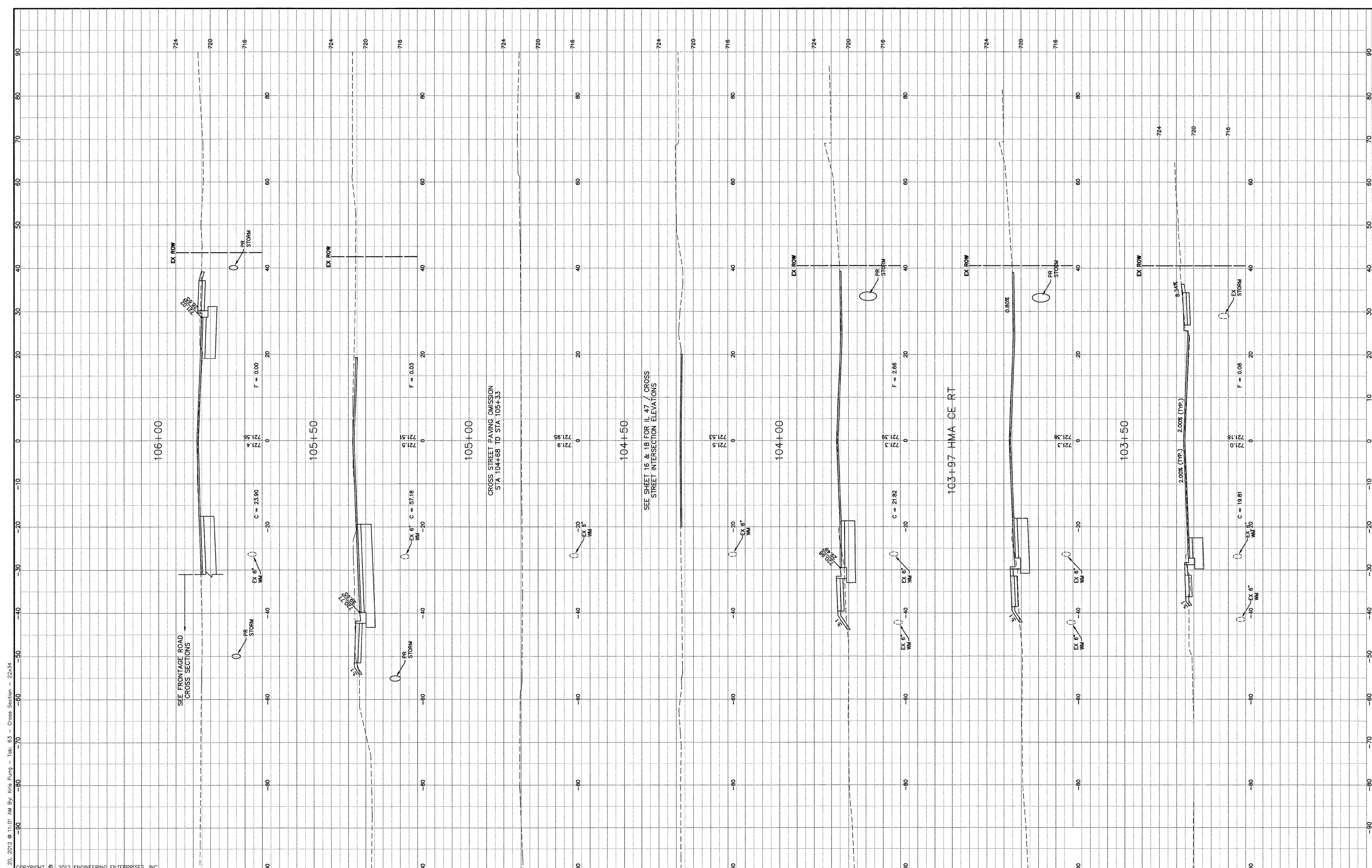
USER NAME =	DESIGNED -	REVISED -
PLOT SCALE =	DRAWN -	REVISED -
PLOT DATE =	CHECKED -	REVISED -
	DATE -	REVISED -

**STATE OF ILLINOIS
 DEPARTMENT OF TRANSPORTATION**

CROSS STREET - CROSS SECTIONS

SCALE: H₁"=10' - V₁"=5' SHEET NO. 5 OF 12 SHEETS STA. 103+50 TO STA. 106+00

F.A.P. RTE. 326	SECTION 10-00023-00-E5	COUNTY KANE	TOTAL SHEETS 70	SHEET NO. 63
FED. ROAD DIST. NO. 1 ILLINOIS			CONTRACT NO. 63700	
FED. AID PROJECT NO. M-9003(717)				



Path: H:\SSK\PROJ\10-00023\DWG\FINAL_ENG\SS1002-SECTIONS