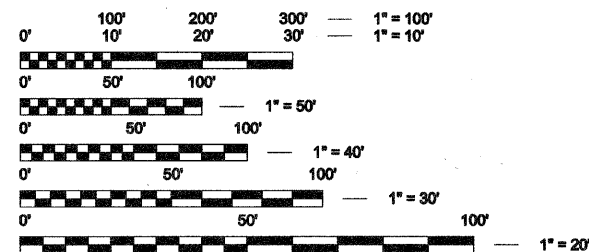


HIGHWAY STANDARDS, SEE SHEET NO. 2

INDEX OF SHEETS	
SHEET #	DESCRIPTION
1	TITLE
2	GENERAL NOTES AND STANDARDS
3	SUMMARY OF QUANTITIES
4	TYPICAL CROSS SECTIONS
5	TYPICAL CROSS SECTIONS
6-9	RESURFACING AND PAVEMENT MARKING PLANS
10	WOODWARD AVENUE/BOUGHTON ROAD DETECTOR LOOP PLAN
11	SCHEDULES
12	TC 10 TRAFFIC CONTROL AND PROTECTION FOR SIDE ROADS, INTERSECTIONS, AND DRIVEWAYS (DISTRICT 1)
13	TC 13 TYPICAL PAVEMENT MARKINGS (DISTRICT 1)
14	BD 24 CURB OR CURB AND GUTTER REMOVAL AND REPLACEMENT (DISTRICT 1)
15	BD 32 BUTT JOINT AND HMA TAPER DETAILS (DISTRICT 1)
16	TS 07 DETECTOR LOOP INSTALLATION DETAILS FOR ROADWAY RESURFACING (DISTRICT 1)

PROJECT IS LOCATED IN THE VILLAGE OF WOODRIDGE

TRAFFIC INFORMATION	
CLASSIFICATION	URBAN COLLECTOR
DESIGN SPEED =	45 MPH
POSTED SPEED =	40 MPH
ADT (2010) =	14,000



FULL SIZE PLANS HAVE BEEN PREPARED USING STANDARD ENGINEERING SCALES. REDUCED SIZED PLANS WILL NOT CONFORM TO STANDARD SCALES. IN MAKING MEASUREMENTS ON REDUCED PLANS, THE ABOVE SCALES MAY BE USED.

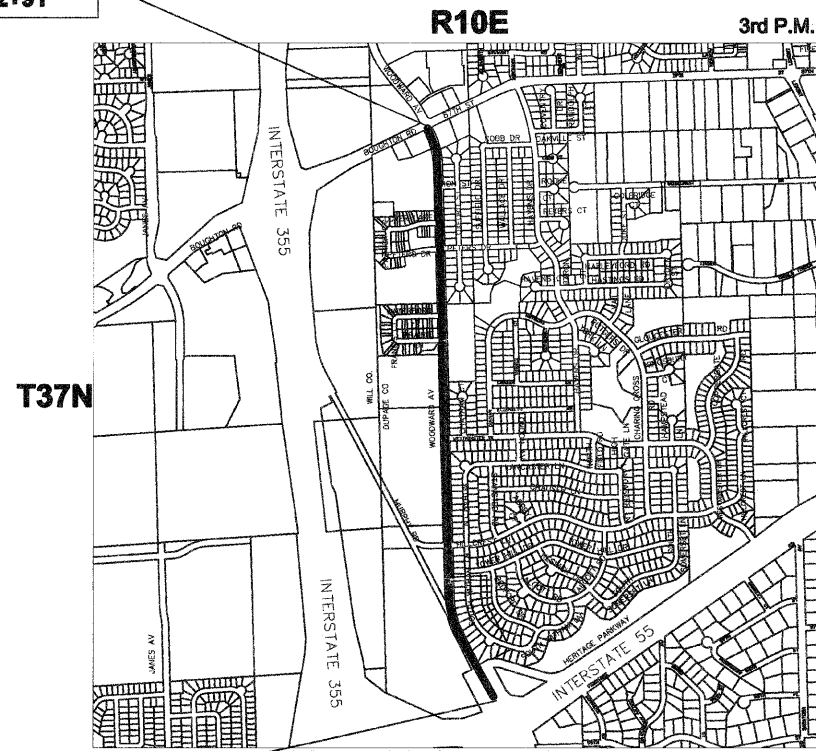
PLANS PREPARED BY:  
**VILLAGE OF WOODRIDGE**  
**DEPARTMENT OF PUBLIC WORKS**

J.U.L.I.E  
 JOINT UTILITY LOCATION INFORMATION FOR EXCAVATION  
 1-800-892-0123 OR 811

CONTRACT 63703

STATE OF ILLINOIS  
 DEPARTMENT OF TRANSPORTATION  
 DIVISION OF HIGHWAYS  
**PLANS FOR PROPOSED  
 FEDERAL AID HIGHWAY**  
**FAU ROUTE 2593 (WOODWARD AVENUE)**  
**INTERSTATE 55 BRIDGE TO BOUGHTON ROAD**  
**RESURFACING**  
**SECTION: 12-00069-00-RS**  
**PROJECT NO: M-9003(970)**  
**VILLAGE OF WOODRIDGE**  
**DUPAGE COUNTY**  
**JOB NO:C-91-267-12**

PROJECT ENDS  
 STA. 372+91



PROJECT BEGINS  
 STA. 301+00

LOCATION MAP IS NOT TO SCALE

GROSS AND NET LENGTH =  
 7,191 FEET (1.36 MI)



LOCATION OF SECTION INDICATED THUS

STATE OF ILLINOIS  
 DEPARTMENT OF TRANSPORTATION  
 DIVISION OF HIGHWAYS

Approved 03/16/12, 2012

*C. Be...*  
 VILLAGE OF WOODRIDGE, DIRECTOR OF PUBLIC WORKS

Passed APRIL 2, 2012

*C. Holt*  
 DISTRICT 1 ENGINEER OF LOCAL ROADS AND STREETS

Released for Bid  
 Based on Limited  
 Review APRIL 2, 2012

*Diane M. O'Keefe*  
 DEPUTY DIRECTOR OF HIGHWAYS, REGION 1 ENGINEER



*Joshua D. Strait*  
 ILLINOIS LICENSED PROFESSIONAL ENGINEER NO. 062-060441  
 LICENSE VALID THROUGH NOVEMBER 30, 2013

PRINTED BY THE AUTHORITY  
 OF THE STATE OF ILLINOIS

COUNTY	SECTION	TOTAL SHEETS	SHEET #
DUPAGE	12-00069-00-RS	16	1

PROGRAM AND OFFICE ENGINEER: CHARLES F. RIDDLE, P.E. 847-705-4406 SCHAUMBURG, IL