

INDEX OF SHEETS

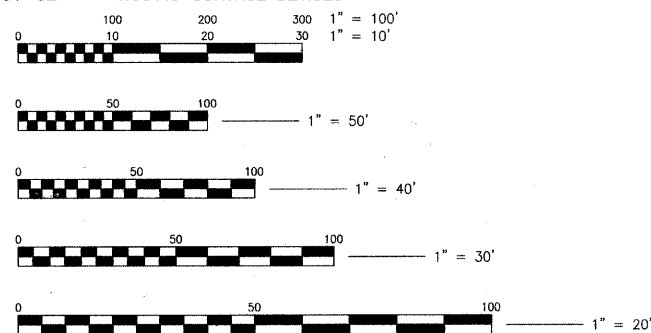
| SHEET NO. | TITLE |
|-----------|---|
| 1 | COVER SHEET, INDEX & LOCATION MAP |
| 2 | GENERAL NOTES |
| 3 | SUMMARY OF QUANTITIES |
| 4 | EXISTING AND PROPOSED TYPICAL SECTIONS |
| 5, 6, & 7 | 183RD STREET (FAU ROUTE 1622) EXISTING ROADWAY AND PAVEMENT MARKING PLAN, STA. 113+18 STA. 138+00 |
| 8 | TC-13 IDOT DISTRICT ONE TYPICAL PAVEMENT MARKING DETAIL |
| 9 | BD 32 IDOT BUTT JOINT & HMA TAPER DETAIL |
| 10 | TC-10 TRAFFIC CONTROL AND PROTECTION FOR SIDE ROADS, |
| 11 | TS07 IDOT DISTRICT ONE DETECTABLE LOOP INSTALLATION DETAILS |
| 12 | BD-8 DETAILS FOR FRAMES AND LIDS ADJUSTMENT WITH MILLING |
| 13 | BD-22 PAVEMENT PATCHING FOR HMA SURFACED PAVEMENT |

STATE OF ILLINOIS
DEPARTMENT OF TRANSPORTATION
DIVISION OF HIGHWAYS
PLANS FOR PROPOSED
FEDERAL AID PROJECT
FAU 1622 (183RD STREET)
SACRAMENTO AVENUE TO FAU 2860 (RIEGEL ROAD)
RESURFACING
SECTION : 10-00132-00-RS
PROJECT NO.: M-9003(985)
VILLAGE OF HOMEWOOD
COOK COUNTY
JOB NO.: C-91-337-12

| F.A.U. ROUTE NO. | SECTION | COUNTY | TOTAL SHEETS | SHEET NO. |
|-----------------------|----------------|--------------------|--------------|-----------|
| 1622 | 10-00132-00-RS | COOK | 13 | 1 |
| FED. ROAD DIST. NO. 1 | ILLINOIS | CONTRACT NO. 63705 | | |

HIGHWAY STANDARDS

| STANDARD NO. | TITLE |
|--------------|--|
| 000001-06 | STANDARD SYMBOLS, ABBREVIATIONS AND PATTERNS |
| 424001-06 | PERPENDICULAR CURB RAMPS |
| 424016-00 | MID BLOCK CURB RAMP |
| 442201-03 | CLASS C AND D PATCHES |
| 604001-03 | FRAMES AND LIDS, TYPE 1 |
| 606001-04 | CONCRETE CURB TYPE-B AND COMBINATION CONCRETE CURB & GUTTER |
| 701601-07 | URBAN LANE CLOSURE, MULTILANE, 1W OR 2W WITH NONTRANSVERSABLE MEDIAN |
| 701701-08 | URBAN LANE CLOSURE, MULTILANE INTERSECTION |
| 701801-05 | LANE CLOSURE MULTILANE 1W OR 2W CROSSWALK OR SIDEWALK CLOSURE |
| 701901-02 | TRAFFIC CONTROL DEVICES |



FULL SIZE PLANS HAVE BEEN PREPARED USING STANDARD ENGINEERING SCALES. REDUCED SIZED PLANS WILL NOT CONFORM TO STANDARD SCALES. IN MAKING MEASUREMENTS ON REDUCED SIZE PLANS, THE ABOVE SCALES SHALL BE USED.

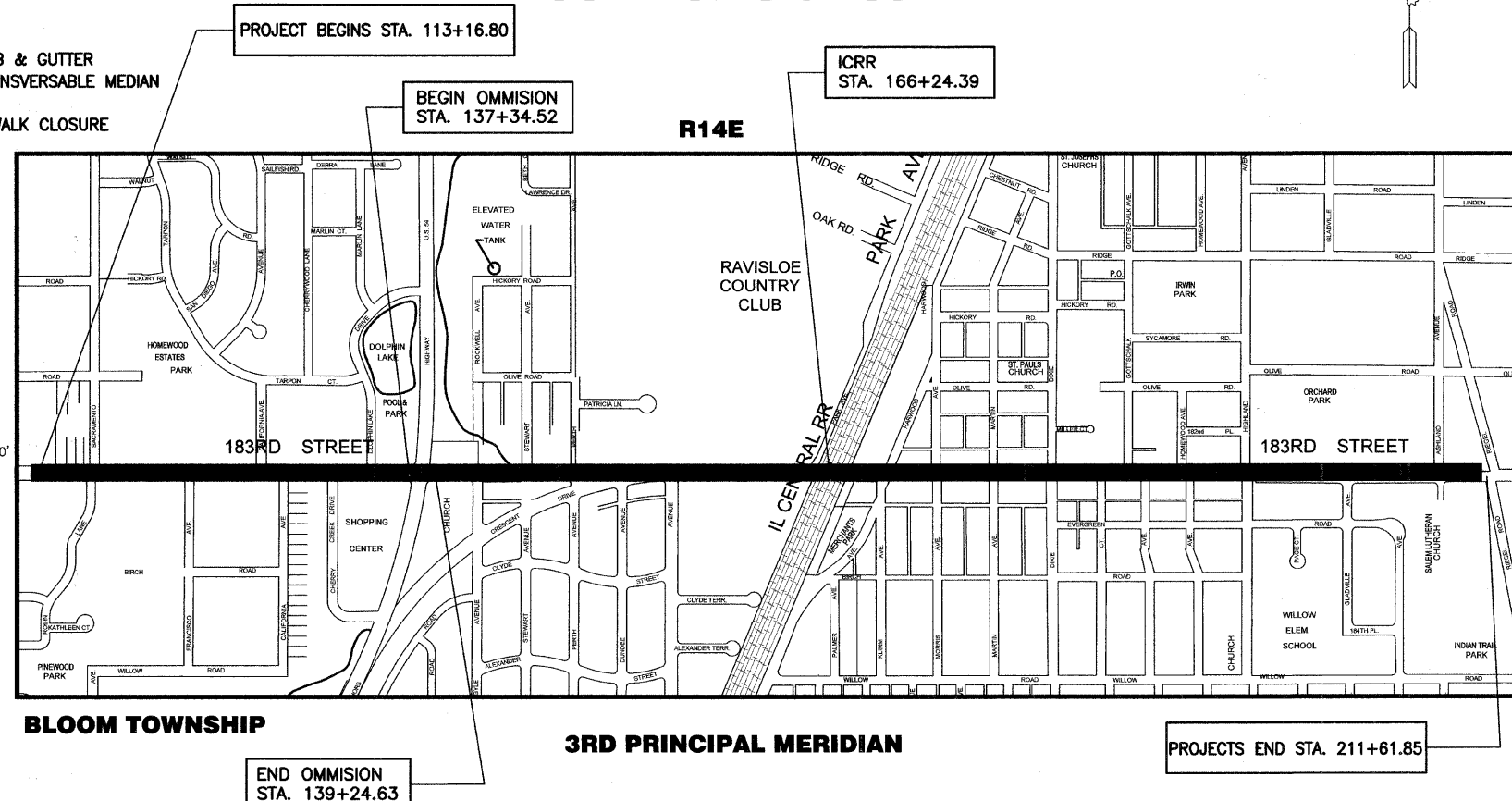
183rd STREET
 POSTED SPEED: 35 MPH
 ADT: 16,500
 MINOR ARTERIAL



OR 811

CALL JULIE (800) 892-0123
 WITH THE FOLLOWING INFORMATION:
 COUNTY = COOK
 48 HOURS BEFORE YOU DIG
 EXCLUDING SAT., SUN. & HOLIDAYS

CONTRACT NO.: 63705



END OMISSION STA. 139+24.63

LOCATION MAP
 NOT TO SCALE

GROSS LENGTH OF PROJECT = 9,845 LINEAL FEET (1.865 MILES)
 NET LENGTH OF PROJECT = 9,655 LINEAL FEET (1.829 MILES)

PROJECT IS LOCATED IN THE VILLAGE OF HOMEWOOD



VILLAGE OF HOMEWOOD
 Department of Public Works
 Engineering Division
 17755 S. Ashland Avenue
 Homewood, IL 60445
 (708) 206-3470



INDICATES LOCATION OF IMPROVEMENT

MAXIMILIAN MASSI
 LICENSE NO. 062-055377
 STATE OF ILLINOIS
 VILLAGE ENGINEER
 " LICENSE EXPIRES 11-30-13 " DATE: 3-30-12

| | |
|---|---|
| STATE OF ILLINOIS DEPARTMENT OF TRANSPORTATION DIVISION OF HIGHWAYS | |
| APPROVED | VILLAGE PRESIDENT |
| PASSED | APRIL 2, 2012 DISTRICT 1 ENGINEER OF LOCAL ROADS & STREETS |
| RELEASING FOR BID BASED ON LIMITED REVIEW | APRIL 2, 2012 DEPUTY DIRECTOR OF HIGHWAYS, REGION 1 ENGINEER |

PRINTED BY THE AUTHORITY OF
 THE STATE OF ILLINOIS

PROGRAM AND OFFICE ENGINEER: CHARLES F. RIDDLE, P.E. (847) 705-4406, SCHAUMBURG, ILLINOIS