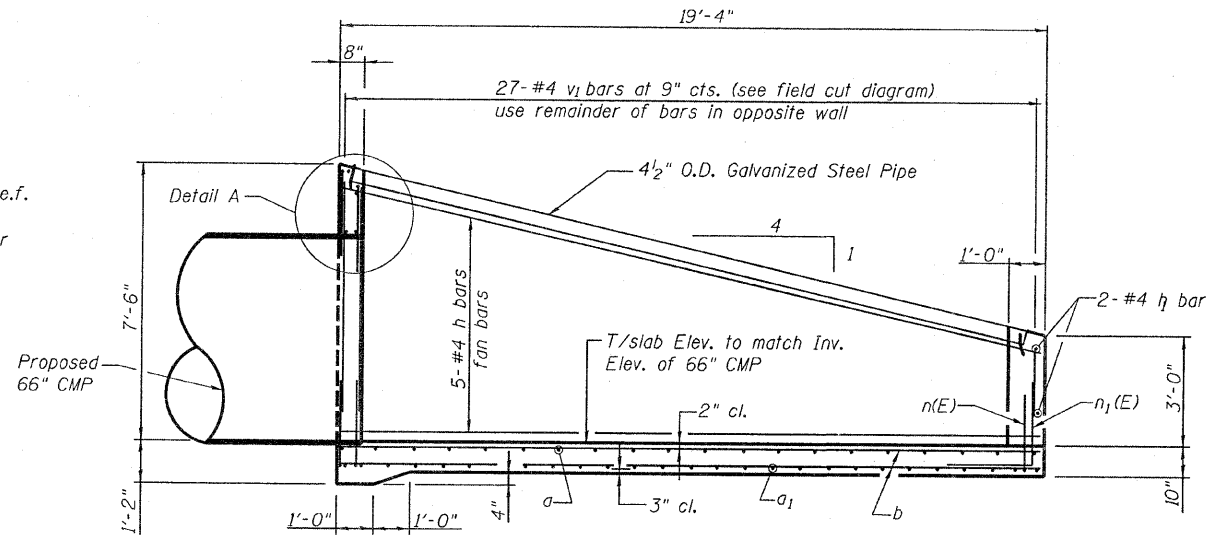
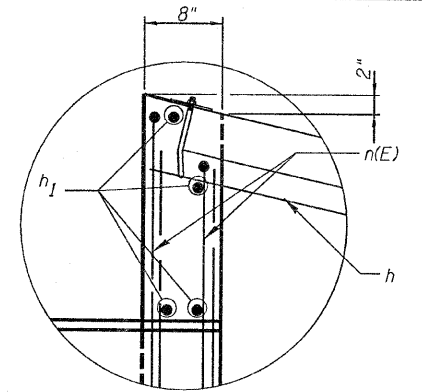


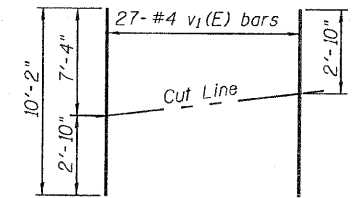
SECTION A-A



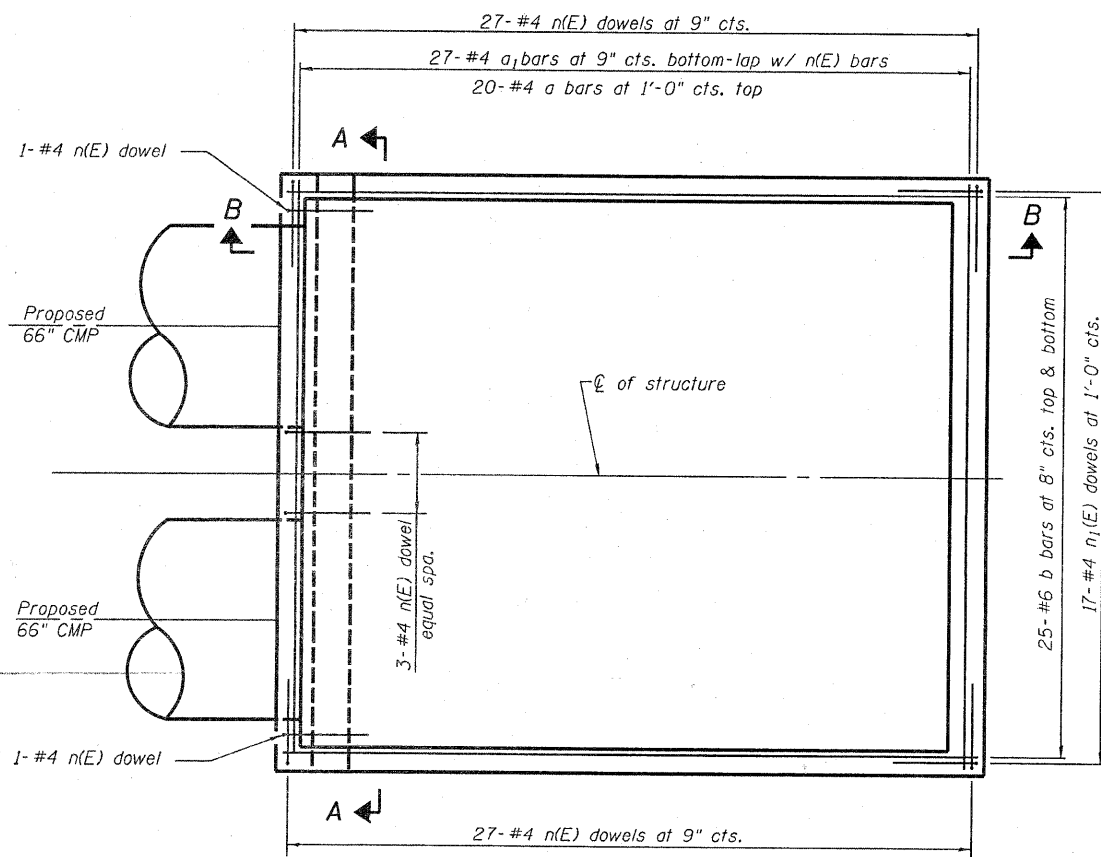
SECTION B-B



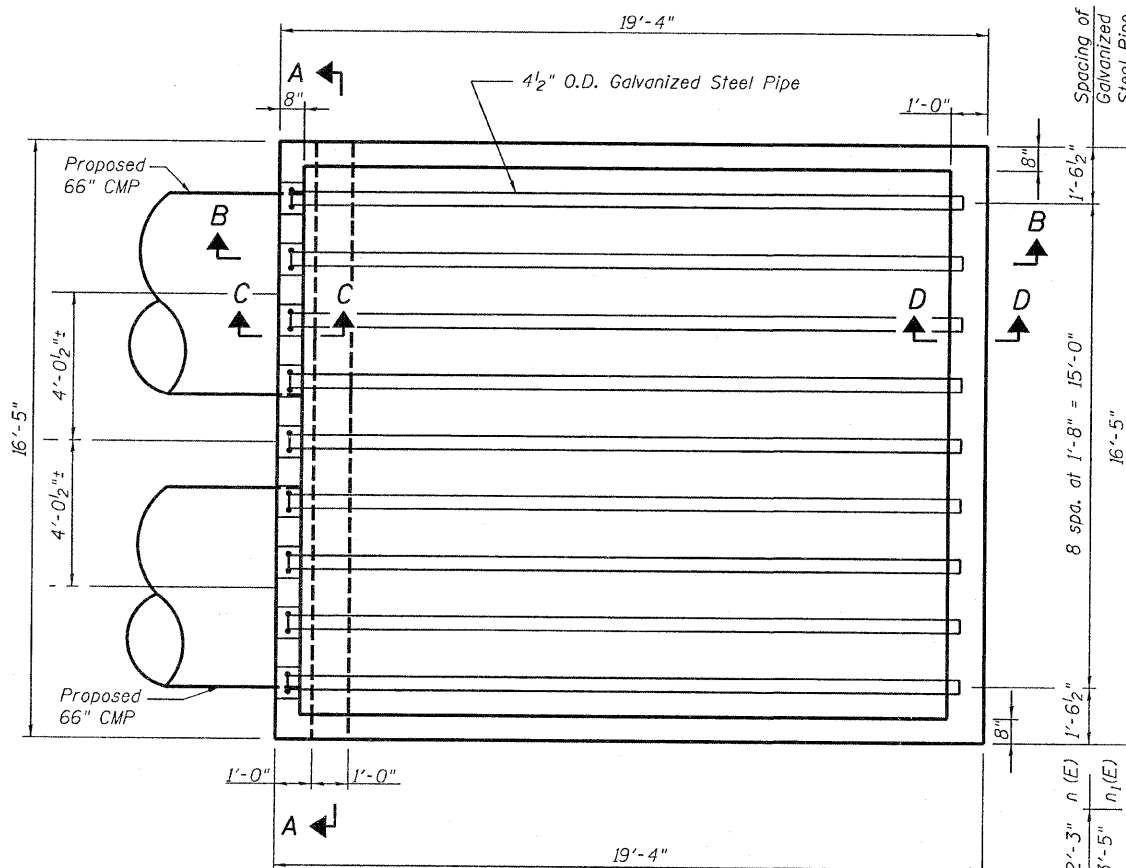
DETAIL A



FIELD CUTTING DIAGRAM
Order v1 full length. Cut as shown and use remainder of bars in opposite wall.



PLAN OF REINFORCEMENT



PLAN

BILL OF MATERIAL

(One Inlet box)

Bar	No.	Size	Length	Shape	
a	20	#4	16'-1"	—	
a1	27	#4	15'-0"	—	
b	50	#6	19'-0"	—	
h	10	#4	19'-0"	—	
h1	6	#4	16'-1"	—	
n(E)	59	#4	4'-6"	L	
n1(E)	17	#4	6'-10"	L	
v	5	#4	7'-4"	—	
v1	27	#4	10'-2"	—	
Concrete Structures				Cu. Yds.	19.0
Reinforcement Bars				Pound	2,310
Reinforcement Bars, Epoxy Coated				Pound	260
Transversible Pipe Grate				Foot	171

Notes:
See Sheet 1 of 3 for Removal Plans.
See Sheet 3 of 3 for Section C-C, D-D, and General Notes.
Reinforcement Bars designated (E) shall be epoxy coated.
Reinforcement bars shall conform to the requirements of ASTM A 706 Gr 60.
Minimum lap: #4 bar-1'-8", #6 bar-2'-7"

BARS n(E) & n1(E)

FILE NAME =	USER NAME =	DESIGNED -	REVISED -
		CHECKED -	REVISED -
		DRAWN -	REVISED -
		CHECKED -	REVISED -

STATE OF ILLINOIS
DEPARTMENT OF TRANSPORTATION

INLET STRUCTURE PLAN & SECTIONS

SHEET NO. 2 OF 3 SHEETS

F.A.P. RTE. 301	SECTION 44M-1	COUNTY JoDaviess	TOTAL SHEETS 49	SHEET NO. 7
			CONTRACT NO. 64H92	

ILLINOIS FED. AID PROJECT