

STATE OF ILLINOIS  
DEPARTMENT OF TRANSPORTATION  
DIVISION OF HIGHWAYS

**PROPOSED  
HIGHWAY PLANS**

F.A.I. ROUTE 39 (I-39)  
SECTION (50-5)I-1

FULL DEPTH RECLAMATION  
LA SALLE COUNTY

C-93-079-12

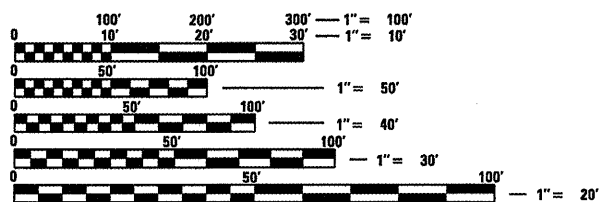
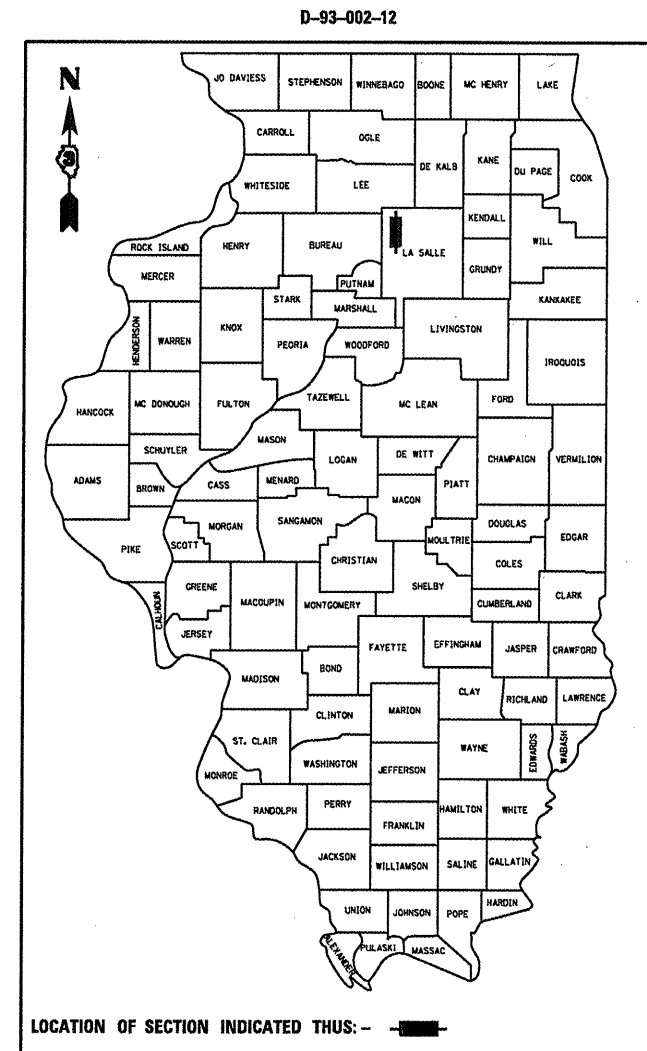
F.A.I. RTE.	SECTION	COUNTY	TOTAL SHEETS	SHEET NO.
39	(50-5)I-1	LA SALLE	7	1
		ILLINOIS	CONTRACT NO. 66C02	

**INDEX OF SHEETS**

- 1 COVER SHEET
- 2 GENERAL NOTES
- 3 SUMMARY OF QUANTITIES
- 4 TYPICAL SECTION
- 5 SCHEDULES OF QUANTITIES
- 6 TRAFFIC CONTROL AND PROTECTION STANDARD 701400 (SPECIAL)
- 7 PLAN SHEET & DETAILS

**STANDARDS**

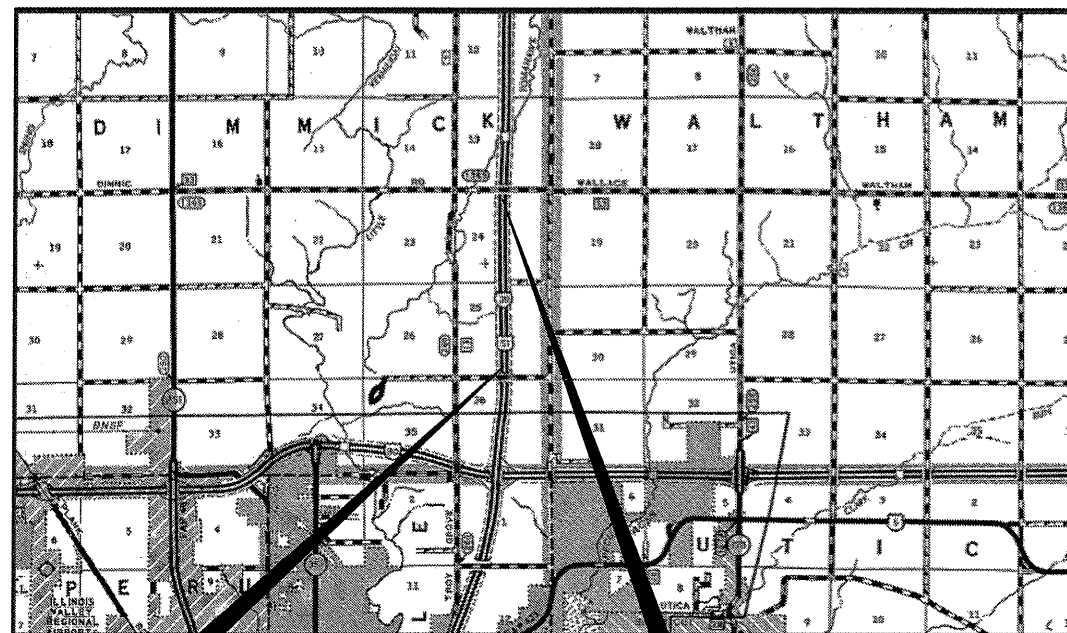
- |           |                                                                            |
|-----------|----------------------------------------------------------------------------|
| 000001-06 | STANDARD SYMBOLS, ABBREVIATIONS AND PATTERNS                               |
| 001006    | DECIMAL OF AN INCH AND OF A FOOT                                           |
| 482006-03 | HMA SHOULDER ADJACENT TO RIGID PAVEMENT                                    |
| 635001-01 | DELINEATORS                                                                |
| 642001-02 | SHOULDER RUMBLE STRIPS, 16 IN                                              |
| 701101-02 | OFF-RD OPERATIONS, MULTILANE, 15' (4.5M) TO 24" (600MM) FROM PAVEMENT EDGE |
| 701106-02 | OFF-RD OPERATIONS, MULTILANE, MORE THAN 15' (4.5M) AWAY                    |
| 701406-06 | LANE CLOSURE, FREEWAY/EXPRESSWAY, DAY OPERATIONS ONLY                      |
| 720011-01 | METAL POSTS FOR SIGNS, MARKERS & DELINEATORS                               |
| 729001-01 | APPLICATIONS OF TYPES A & B METAL POST (FOR SIGNS & MARKERS)               |



FULL SIZE PLANS HAVE BEEN PREPARED USING STANDARD ENGINEERING SCALES. REDUCED SIZED PLANS WILL NOT CONFORM TO STANDARD SCALES. IN MAKING MEASUREMENTS ON REDUCED PLANS, THE ABOVE SCALES MAY BE USED.

J.U.L.I.E.  
JOINT UTILITY LOCATION INFORMATION FOR EXCAVATION  
1-800-892-0123  
OR 811

**BEGIN PROJECT  
BEGIN STA. 1084 + 25**



**END PROJECT  
END STA. 1187 + 71**

GROSS LENGTH = 10346.00 FT. = 1.96 MILES  
NET LENGTH = 10346.00 FT. = 1.96 MILES

LOCATION MAP  
NOT TO SCALE

DISTRICT 3 NO. (815) 434-6131  
PROJECT ENGINEER: JOE KANNEL, P.E.  
UNIT CHIEF: RON WOODSHANK  
TOWNSHIP: DIMMICK  
CONTRACT NO. 66C02

**FUNCTIONAL CLASSIFICATION**  
**RURAL INTERSTATE**  
2011 ADT = 18200  
P.V. = 68.13% M.U. = 26.92% S.U. = 4.95%

STATE OF ILLINOIS  
DEPARTMENT OF TRANSPORTATION  
DIVISION OF HIGHWAYS

SUBMITTED 4/6 20 12  
*Eric S. Thorburn*  
DEPUTY DIRECTOR OF HIGHWAYS, REGION ENGINEER

May 11 20 12  
*John D. Bauranelli, P.E.*  
ENGINEER OF DESIGN AND ENVIRONMENT

May 11 20 12  
*William R. Freyer*  
DIRECTOR OF HIGHWAYS, CHIEF ENGINEER

**PRINTED BY THE AUTHORITY  
OF THE STATE OF ILLINOIS**

## GENERAL NOTES

PLAN DIMENSIONS RELATIVE TO THE EXISTING ROADWAY HAVE BEEN TAKEN FROM EXISTING PLANS AND ARE SUBJECT TO NOMINAL CONSTRUCTION VARIATIONS. IT SHALL BE THE CONTRACTOR'S RESPONSIBILITY TO MAKE NECESSARY ADJUSTMENTS PRIOR TO CONSTRUCTION OR ORDERING OF MATERIALS. SUCH VARIATIONS SHALL NOT BE CAUSE FOR ADDITIONAL COMPENSATION FOR A CHANGE IN THE SCOPE OF THE WORK. HOWEVER, THE CONTRACTOR WILL BE PAID FOR THE QUANTITY FURNISHED AT THE UNIT PRICE BID FOR THE WORK.

THE THICKNESS OF HMA SHOWN ON THE PLANS IS THE NOMINAL THICKNESS. DEVIATIONS FROM THE NOMINAL THICKNESS WILL BE PERMITTED WHEN SUCH DEVIATIONS OCCUR DUE TO IRREGULARITIES IN THE EXISTING SURFACE OR BASE ON WHICH THE HMA IS PLACED.

ON EXISTING PAVEMENT WHICH MAY BE SUPERELEVATED, THE NEW HMA SHOULDER SHALL BE BUILT ACCORDING TO STANDARD 482006 (HMA SHOULDER ADJACENT TO RIGID PAVEMENT).

THE ENGINEER WILL BE THE SOLE JUDGE CONCERNING CURING TIME FOR THE VARIOUS HMA LIFTS.

ANY REFERENCE TO A STANDARD IN THESE PLANS SHALL BE INTERPRETED TO MEAN THE EDITION AS INDICATED BY THE SUBNUMBER SHOWN IN THE LIST OF STANDARDS OR THE COPY INCLUDED IN THESE PLANS.

THE CONTRACTOR SHALL CONTACT JULIE AT LEAST 48 HOURS PRIOR TO EXCAVATION TO DETERMINE WHICH UTILITIES ARE IN THE AREA.

THE FOLLOWING RATES OF APPLICATION HAVE BEEN USED IN CALCULATING PLAN QUANTITIES:

GRANULAR MATERIALS	2.05	TONS / CU YD
AGGREGATE (PRIME COAT)	0.002	TONS / SQ YD
HMA RESURFACING	112	LBS / SQ YD / IN
SHORT TERM PAVEMENT MARKING	10	FT /100 FT OF APPLICATION
MIX FOR CRACKS, JTS & FLGWYS	0.0003	TONS / SQ YD
LEVEL BINDER (HAND METHOD)	0.0005	TONS / SQ YD
SUPPLEMENTAL WATERING	3	GAL / SQ YD / APPLICATION
CALCIUM CHLORIDE	2	LB / SQ YD / APPLICATION
AGGREGATE DITCH CHECKS	5	TONS AGGREGATE

BITUMINOUS MATERIALS (PRIME COAT) RATES		
SURFACE TYPE	ESTIMATED TRUCK APPLICATION RATE	RESIDUAL RATE
AGGREGATE BASES	0.375 GAL / SQ YD	N/A
MILLED HMA OR PCC PAVEMENT	0.08 GAL / SQ YD	0.04 GAL / SQ YD
EXISTING PAVEMENT	0.05 GAL / SQ YD	0.025 GAL / SQ YD
FOG COAT (BETWEEN ADDITIONAL HMA LIFTS)	0.05 GAL / SQ YD	0.025 GAL / SQ YD

## MIXTURES TABLE

	HMA SURFACE (SHOULDER)
PG GRADE	PG64-22
DESIGN AIR VOIDS	4.0% @ N50
MIXTURE COMPOSITION	IL 9.5
FICTION AGGREGATE	MIXTURE C
DENSITY CONTROL METHOD	CORES

## COMMITMENTS

DATE: 4-6-12

PREPARED BY: Don Brunil  
DISTRICT STUDIES & PLANS ENGINEER

EXAMINED BY: Harold K. Jones  
DISTRICT CONSTRUCTION ENGINEER

Ray J. Phillips  
DISTRICT MATERIALS ENGINEER

James A. Decker  
DISTRICT OPERATIONS ENGINEER

FILE NAME =	USER NAME = carpenterdj	DESIGNED - DBS	REVISED -
ci\pw\work\pwidot\carpenterdj\d0294510\366C02-shr-cover.dgn		DRAWN - DBS	REVISED -
	PLOT SCALE = 1:5625 ' / in.	CHECKED -	REVISED -
	PLOT DATE = 4/5/2012	DATE - MARCH 2012	REVISED -

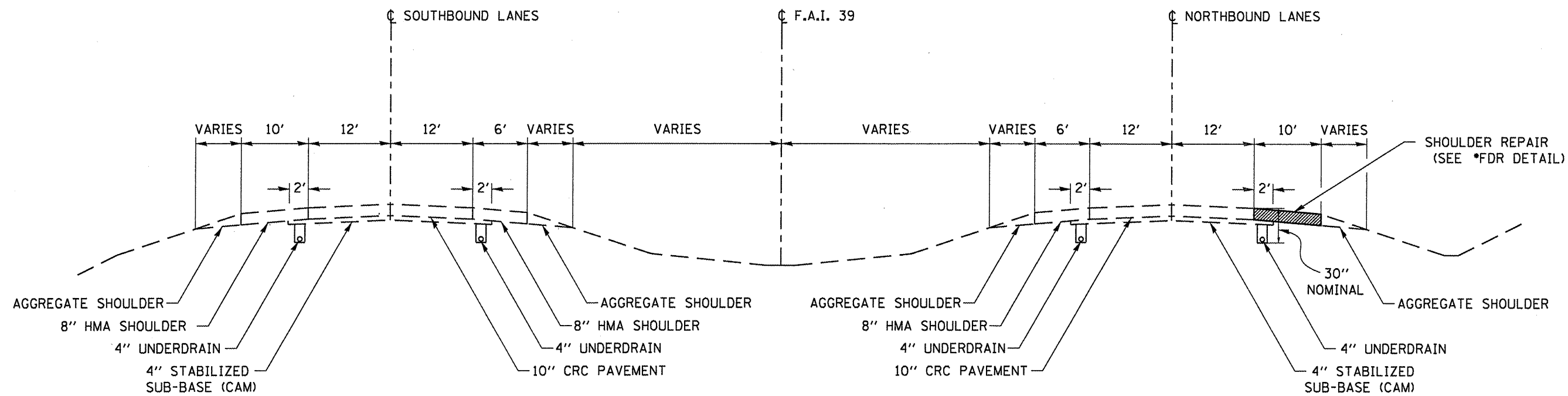
STATE OF ILLINOIS  
DEPARTMENT OF TRANSPORTATION

### GENERAL NOTES

SCALE: \_\_\_\_\_ SHEET 1 OF 1 SHEETS STA. 1084+25 TO STA. 1187+71

F.A.I. RTE.	SECTION	COUNTY	TOTAL SHEETS	SHEET NO.
-39-	(50:51)-1	LA SALLE	7	2
CONTRACT NO. 66C02			ILLINOIS FED. AID PROJECT	

CODE NO.	ITEM	UNIT	TOTAL QUANTITY	CONSTR. CODE
				STATE FUNDS
				100%
				ROADWAY
				0004
RURAL				
40600100	BITUMINOUS MATERIALS (PRIME COAT)	GAL	575	575
40603310	HOT-MIX ASPHALT SURFACE COURSE, MIX "C", N50	TON	1288	1288
44000157	HOT-MIX ASPHALT SURFACE REMOVAL, 2"	SQ YD	11496	11496
64200116	SHOULDER RUMBLE STRIPS, 16 INCH	FOOT	10346	10346
67100100	MOBILIZATION	L SUM	1	1
X7010600	TRAFFIC CONTROL AND PROTECTION, STANDARD 701406 (SPECIAL)	L SUM	1	1
X0327419	SHOULDER RECLAMATION, 6" FULL DEPTH	SQ YD	11496	11496



**TYPICAL SECTION**

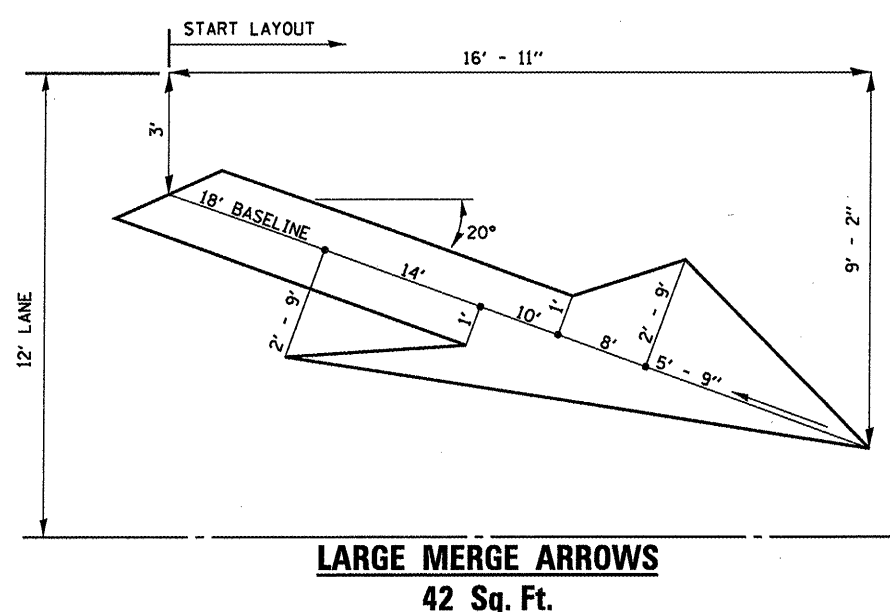
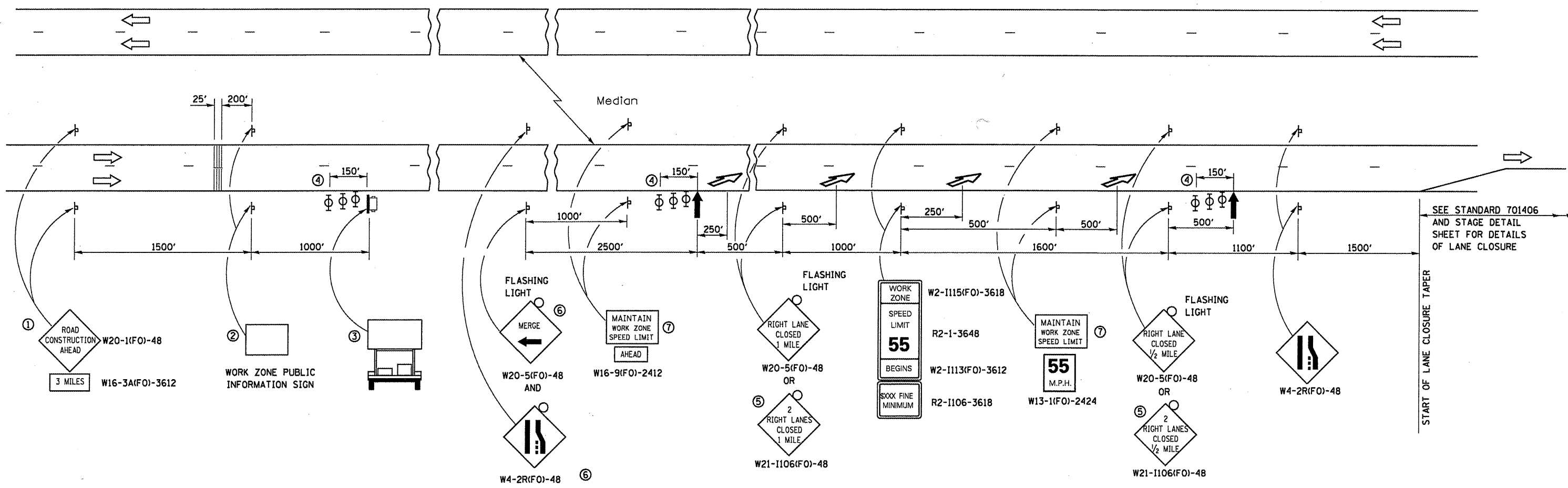
STA. 1084+25 TO STA. 1187+71

\*FDR = FULL DEPTH RECLAMATION

FILE NAME = c:\pwork\pwork\carpentard\108294610\366C02-ht-cover.dgn	USER NAME = carpentardj	DESIGNED - DBS	REVISED -	<b>STATE OF ILLINOIS DEPARTMENT OF TRANSPORTATION</b>	<b>TYPICAL SECTION</b>		F.A.I. RTE.	SECTION	COUNTY	TOTAL SHEETS	SHEET NO.
	PLOT SCALE = 1/8" = 1' / in.	CHECKED -	REVISED -				-39-	(50-51)-1	LA SALLE	7	4
	PLOT DATE = 4/5/2012	DATE - MARCH 2012	REVISED -				CONTRACT NO. 66C02				
							ILLINOIS FED. AID PROJECT				
				SCALE: _____ SHEET 1 OF 1 SHEETS STA. 1084+25 TO STA. 1187+71							

**SHOULDER SCHEDULE**

STATION TO STATION	HMA SURFACE REMOVAL, 2"	SHOULDER RECLAMATION, 6"	BITUMINOUS MATERIALS PRIME COAT	HMA SURFACE CSE, MIX "C" N50, "2"	SHOULDER RUMBLE STRIPS, 16"
	SQ YD	SQ YD	GAL	TON	FOOT
1084+25 - 1187+71	11496	11496	575	1288	10346
<b>TOTAL</b>	11496	11496	575	1288	10346



- ① THE ROAD CONSTRUCTION AHEAD SIGN SHALL BE LOCATED 3 MILES IN ADVANCE OF THE PROJECT LIMITS.
- ② THE MESSAGE AND SIZE OF THE WORK ZONE PUBLIC INFORMATION SIGN SHALL BE AS SPECIFIED BY THE DEPARTMENT.
- ③ TO BE PLACED IN THE MEDIAN WHEN FEASIBLE. THE MESSAGE BOARD SHALL BE USED TO DISPLAY STATUS OF LANES WITHIN THE PROJECT. THE PRIMARY MESSAGES SHALL BE:  
"RIGHT LANE CLOSED" / " x MILES AHEAD"  
"LEFT LANE CLOSED" / " x MILES AHEAD"  
"ALL LANES OPEN"
- ④ THREE, TYPE II BARRICADES, DRUMS, OR VERTICAL BARRICADES AT 50' CENTERS.
- ⑤ THIS SIGN SHALL BE USED WHEN 2 LANES ARE CLOSED.
- ⑥ WHEN THE LEFT LANE IS CLOSED, SWITCH THESE TWO SIGNS AND THE DIRECTION OF THE MERGE ARROW.
- ⑦ 48"x36" FLUORESCENT ORANGE SIGN WITH BLACK LETTERS.

48"  
36" MAINTAIN WORK ZONE SPEED LIMIT 8"  
6"  
6"

- ↑ ARROW BOARD
- ☐ PORTABLE CHANGEABLE MESSAGE SIGN
- ⊥ SIGN
- ⊕ TYPE II BARRICADE, DRUM, OR VERTICAL BARRICADE WITH MONODIRECTIONAL FLASHING LIGHT
- ↘ LANE DROP ARROW - SEE STANDARD 780001
- ▨ TEMPORARY THERMOPLASTIC RUMBLE STRIPS

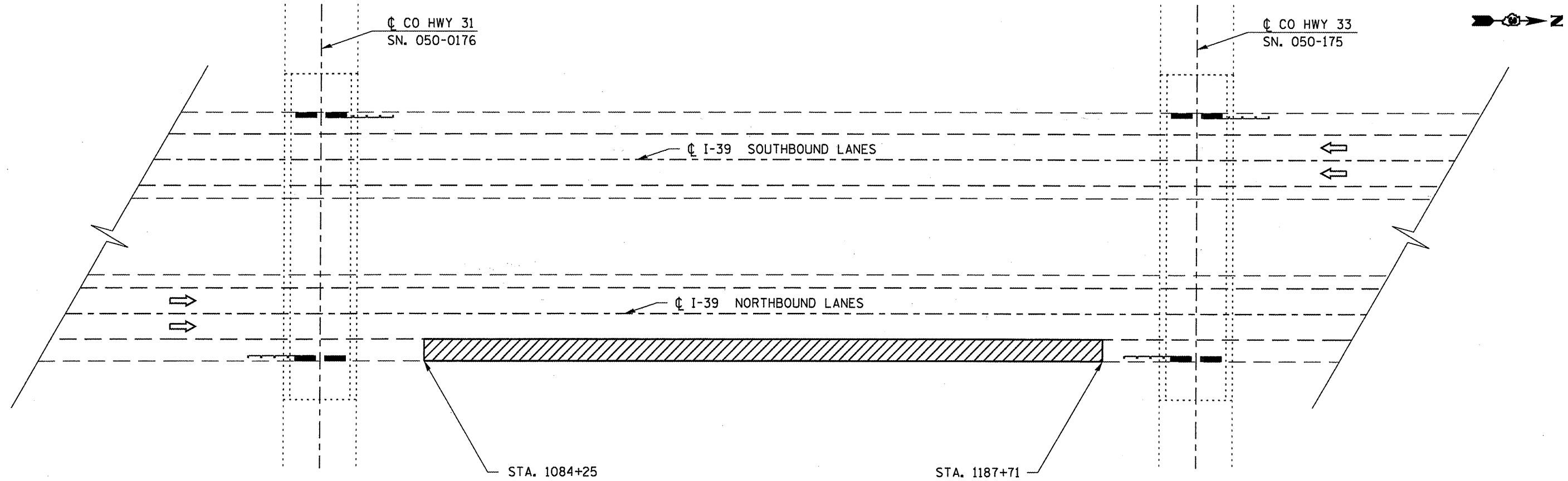
**GENERAL NOTE:**

THIS STANDARD IS USED WHERE AT ANY TIME A LANE IS CLOSED ON A FREEWAY/EXPRESSWAY.

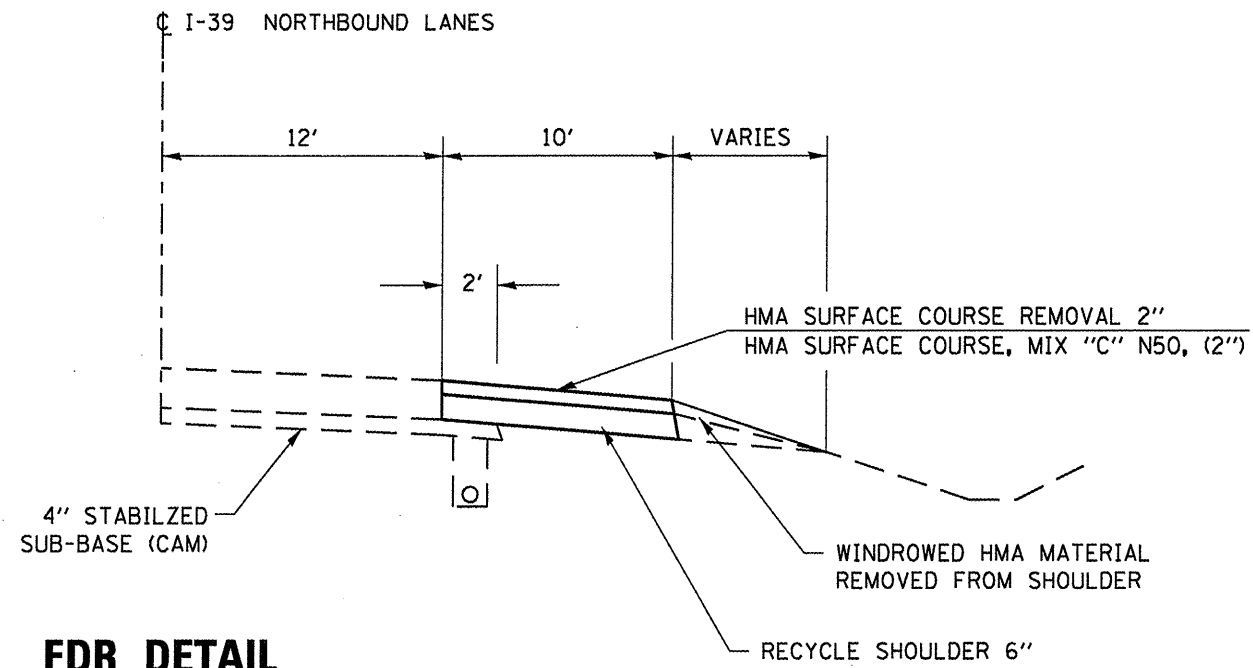
WHEN THE LEFT LANE IS CLOSED, LEFT LANE CLOSED SIGNS SHALL BE SUBSTITUTED FOR THE RIGHT LANE CLOSED SIGNS.

THE FIRST TWO SIGNS AND THE MESSAGE BOARD ARE STATIONARY. THE OTHER SIGNS AND ARROWBOARDS SHALL BE MOVED AS NECESSARY TO MAINTAIN THE REQUIRED DISTANCE FROM THE START OF THE LANE CLOSURE TAPER(S).

SEE SPECIAL PROVISIONS.



**PLAN VIEW**



**FDR DETAIL**

FILE NAME =	USER NAME = carpenterdj	DESIGNED - OBS	REVISED -
at:\pw_work\pilot\carpenterdj\0294510\366C02-sht-cover.dgn		DRAWN - OBS	REVISED -
PLOT SCALE = 1:5625 ' / in.		CHECKED -	REVISED -
PLOT DATE = 4/5/2012		DATE - MARCH 2012	REVISED -

STATE OF ILLINOIS  
DEPARTMENT OF TRANSPORTATION

<b>PLAN VIEW AND FDR DETAILS</b>	
SCALE: _____	SHEET NO. 1 OF 1 SHEETS
STA. 1084+25 TO STA. 1187+71	

F.A.I. RTE.	SECTION	COUNTY	TOTAL SHEETS	SHEET NO.
39	(50:51)-1	LA SALLE	7	7
CONTRACT NO. 66C02			ILLINOIS FED. AID PROJECT	