

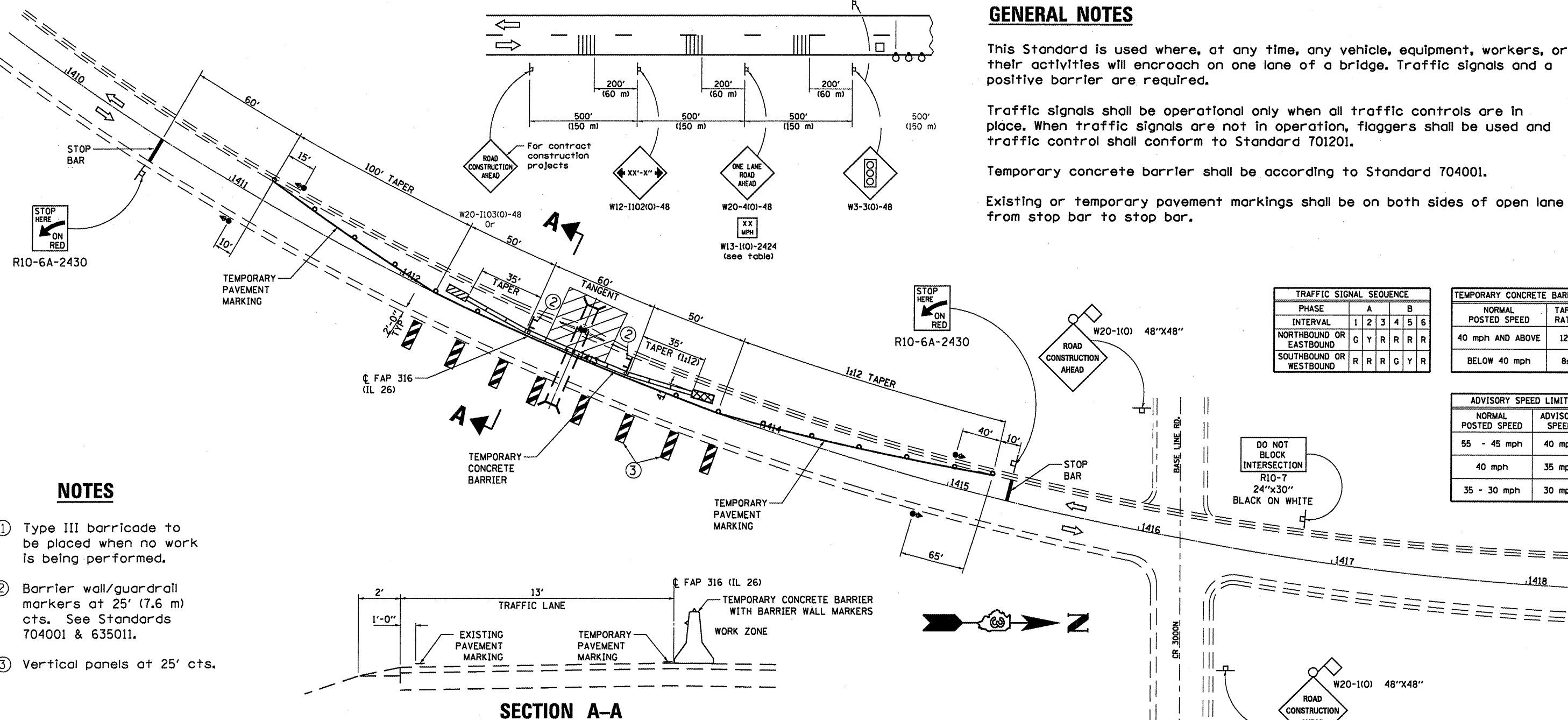
GENERAL NOTES

This Standard is used where, at any time, any vehicle, equipment, workers, or their activities will encroach on one lane of a bridge. Traffic signals and a positive barrier are required.

Traffic signals shall be operational only when all traffic controls are in place. When traffic signals are not in operation, flaggers shall be used and traffic control shall conform to Standard 701201.

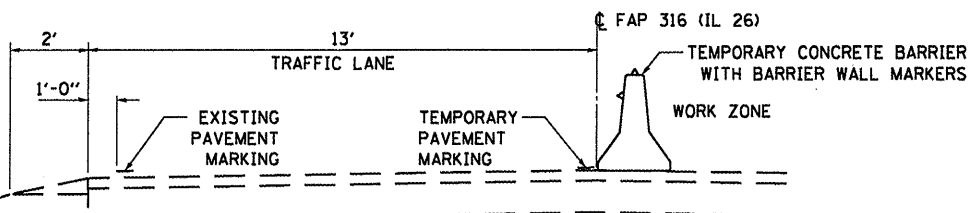
Temporary concrete barrier shall be according to Standard 704001.

Existing or temporary pavement markings shall be on both sides of open lane from stop bar to stop bar.



NOTES

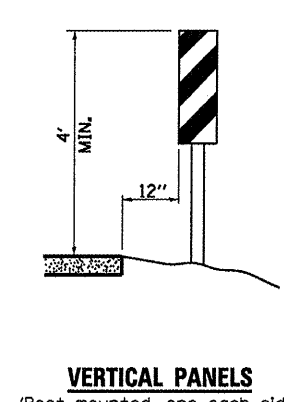
- ① Type III barricade to be placed when no work is being performed.
- ② Barrier wall/guardrail markers at 25' (7.6 m) cts. See Standards 704001 & 635011.
- ③ Vertical panels at 25' cts.



SECTION A-A

SYMBOLS

- | | | | |
|--|-----------------------------|--|------------------------------------------------------|
| | Work area | | Drum with steady burning bi-directional light |
| | Sign | | Temporary concrete barrier |
| | Type III barricade | | Double vertical panel (see detail) |
| | Traffic signal w/Back Plate | | Crystal, bidirectional barrier wall/guardrail marker |
| | Impact attenuator | | |
| | Temporary rumble strip | | |



VERTICAL PANELS
(Post mounted, one each side)

TRAFFIC SIGNAL SEQUENCE						
PHASE	A	B				
INTERVAL	1	2	3	4	5	6
NORTHBOUND OR EASTBOUND	G	Y	R	R	R	R
SOUTHBOUND OR WESTBOUND	R	R	R	G	Y	R

TEMPORARY CONCRETE BARRIER	
NORMAL POSTED SPEED	TAPER RATIO
40 mph AND ABOVE	12:1
BELOW 40 mph	8:1

ADVISORY SPEED LIMIT	
NORMAL POSTED SPEED	ADVISORY SPEED
55 - 45 mph	40 mph
40 mph	35 mph
35 - 30 mph	30 mph

