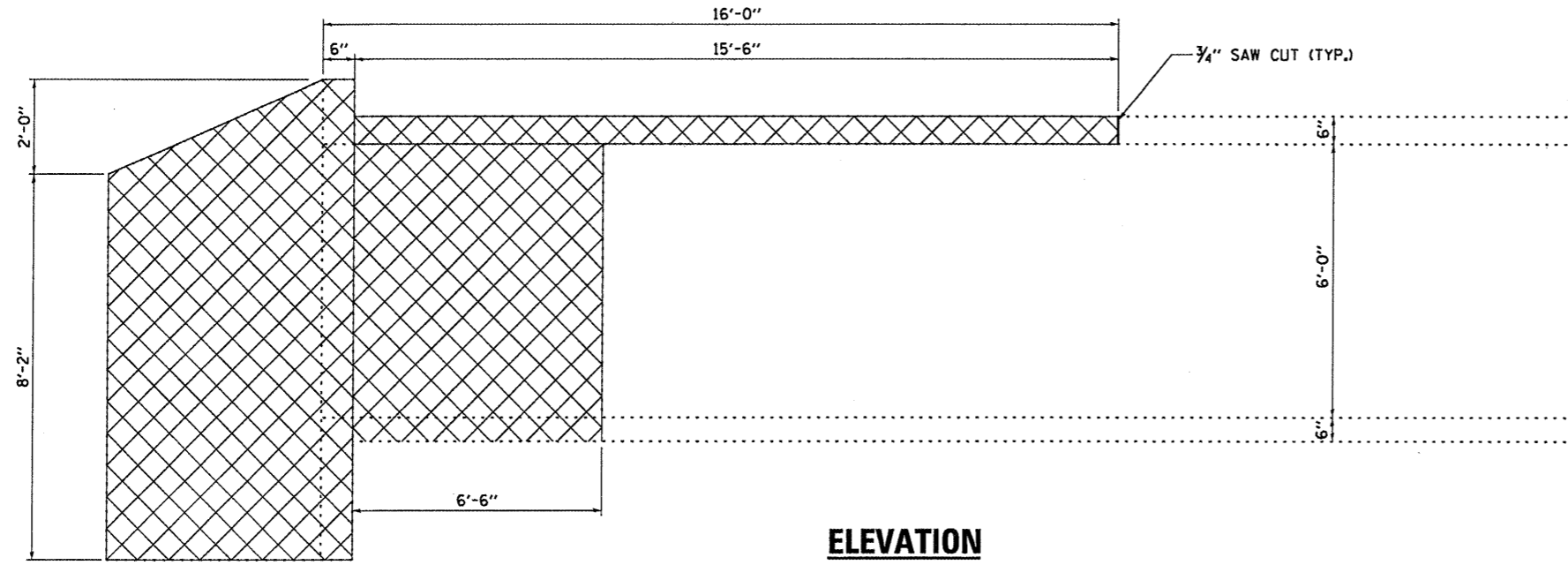


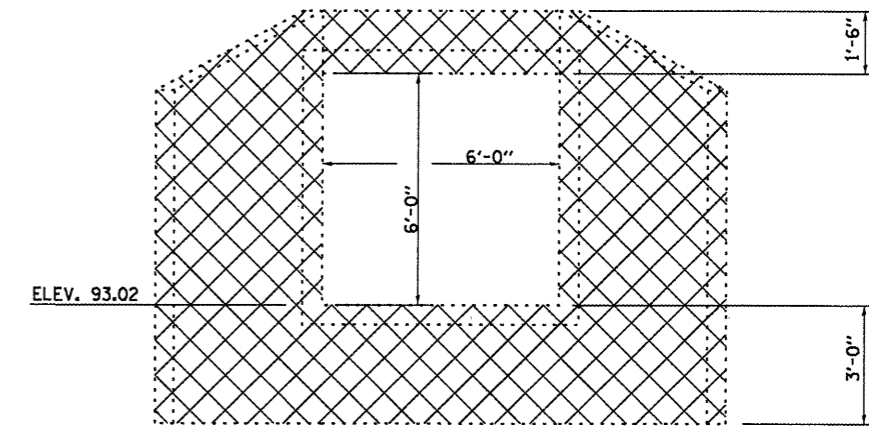
FAP 316 (IL 26)



**ELEVATION**

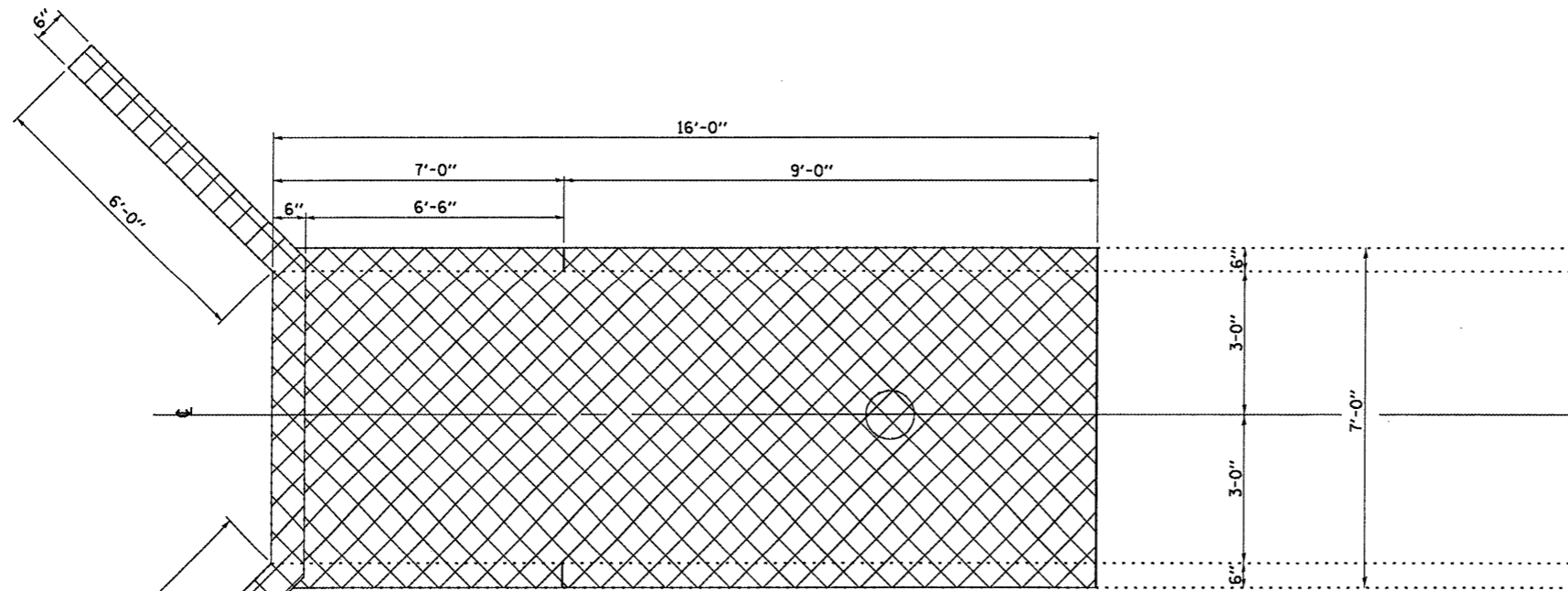


**CONCRETE REMOVAL**



**VIEW B-B**

**B**



**PLAN**

FAP 316 (IL 26)

**NOTES**

EXISTING REINFORCEMENT BARS EXTENDING INTO CONCRETE REMOVAL AREA SHALL BE CUT OFF FLUSH WITH FACE OF CONCRETE AT REMOVAL LINE.

EXISTING REINFORCEMENT WITHIN CONCRETE REMOVAL AREA SHALL BE REMOVED AND REPLACED WITH EPOXY COATED REINFORCEMENT.

**B**

FILE NAME = c:\pwwork\pwwork\carpentardj\d0268148	USER NAME = carpentardj 366B43-sht-details.dgn	DESIGNED - RLW DRAWN - RLW	REVISED - REVISED - REVISED - REVISED -	<b>STATE OF ILLINOIS DEPARTMENT OF TRANSPORTATION</b>	<b>REMOVAL DETAILS FOR STRUCTURE NO. 006-2517</b>	F.A.P. RTE. 316	SECTION (114)	COUNTY BUREAU	TOTAL SHEETS 12	SHEET NO. 10
PLOT SCALE = 1/8" = 1'-0"						SCALE: _____	SHEET NO. 2 OF 4 SHEETS	STA. _____	TO STA. _____	CONTRACT NO. 66C11 ILLINOIS FED. AID PROJECT