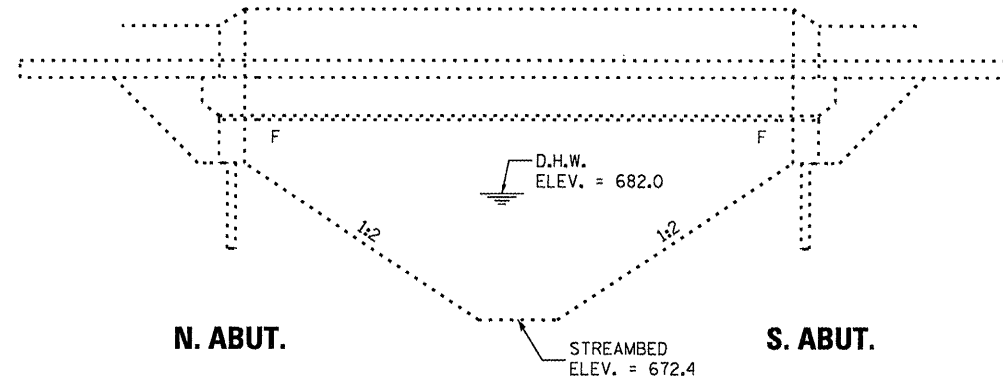


GENERAL NOTES

PLAN DIMENSIONS AND DETAILS RELATIVE TO EXISTING PLANS ARE SUBJECT TO NOMINAL CONSTRUCTION VARIATIONS. THE CONTRACTOR SHALL FIELD VERIFY EXISTING DIMENSIONS AND DETAILS AFFECTING NEW CONSTRUCTION AND MAKE NECESSARY APPROVED ADJUSTMENTS PRIOR TO CONSTRUCTION OR ORDERING OF MATERIALS. SUCH VARIATIONS SHALL NOT BE CAUSE FOR ADDITIONAL COMPENSATION FOR A CHANGE IN SCOPE OF WORK; HOWEVER, THE CONTRACTOR WILL BE PAID FOR THE QUANTITY ACTUALLY FURNISHED AT THE UNIT PRICE BID FOR THE WORK.

REINFORCEMENT BARS DESIGNATED (E) SHALL BE EPOXY COATED.

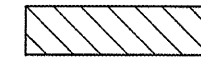
EXISTING REINFORCEMENT BARS EXTENDING INTO THE REMOVAL AREA SHALL BE CLEANED, STRAIGHTENED AND INCORPORATED INTO THE NEW CONSTRUCTION. ANY REINFORCEMENT BARS THAT ARE DAMAGED DURING CONCRETE REMOVAL SHALL BE REPLACED WITH AN APPROVED BAR SPLICER OR ANCHORAGE SYSTEM. COST INCLUDED WITH CONCRETE REMOVAL.



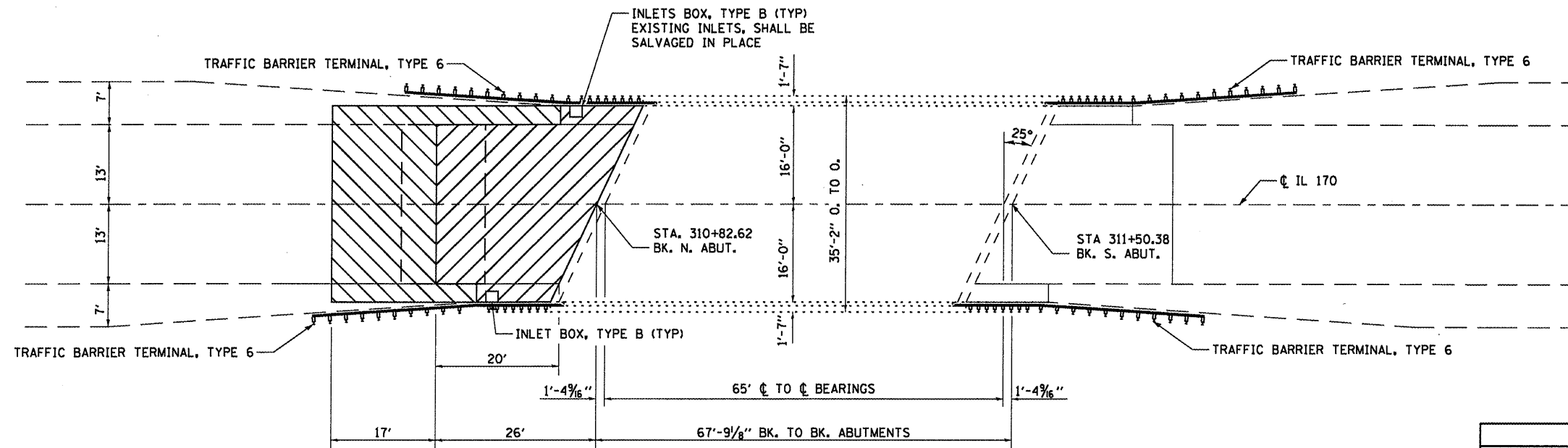
ELEVATION



APPROACH SLAB REMOVAL



PAVEMENT REMOVAL (HMA)



PLAN

**TOTAL BILL OF MATERIALS
FOR STRUCTURE NO. 053-0163**

ITEM	UNIT	TOTAL
CONCRETE STRUCTURES	CU YD	11.6
CONCRETE SUPERSTRUCTURE	CU YD	55.1
REINFORCEMENT BARS EPOXY COATED	POUND	12927
BAR SPICERS	EACH	105
APPROACH SLAB REMOVAL	SQ YD	89

FILE NAME =	USER NAME = spurlookd	DESIGNED - DBS	REVISED -
66C26-sht-details.dgn		DRAWN - DBS	REVISED -
PLOT SCALE = 1/8" = 1'-0"		CHECKED -	REVISED -
PLOT DATE = 4/2/2012		DATE - MARCH 2012	REVISED -

**STATE OF ILLINOIS
DEPARTMENT OF TRANSPORTATION**

**EXISTING GENERAL PLAN AND ELEVATION FOR
STRUCTURE NO. 053-0163**

SCALE: SHEET NO. 1 OF 3 SHEETS STA. 310+39.62 TO STA. 310+88.62

F.A.P. RTE.	SECTION	COUNTY	TOTAL SHEETS	SHEET NO.
786	(97-15D, BR-11)	LIVINGSTON	8	6
CONTRACT NO. 66C26				
ILLINOIS FED. AID PROJECT				