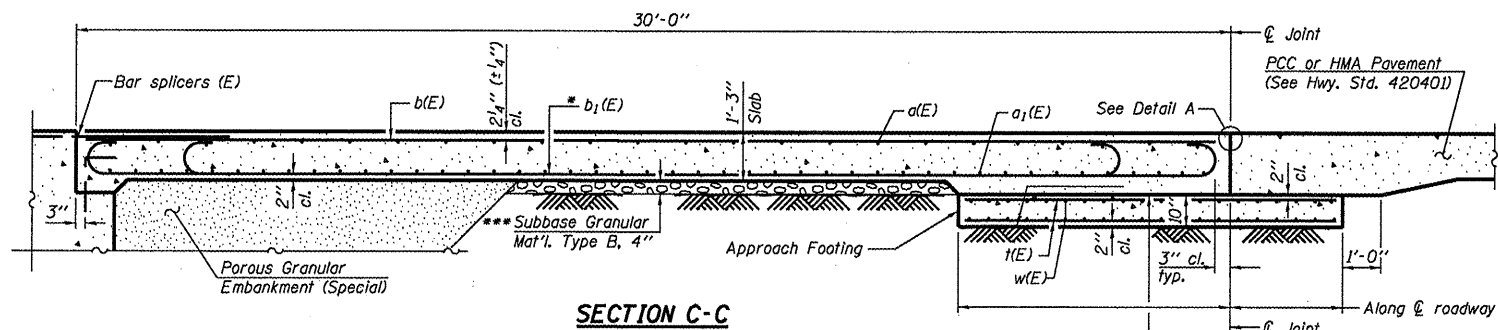
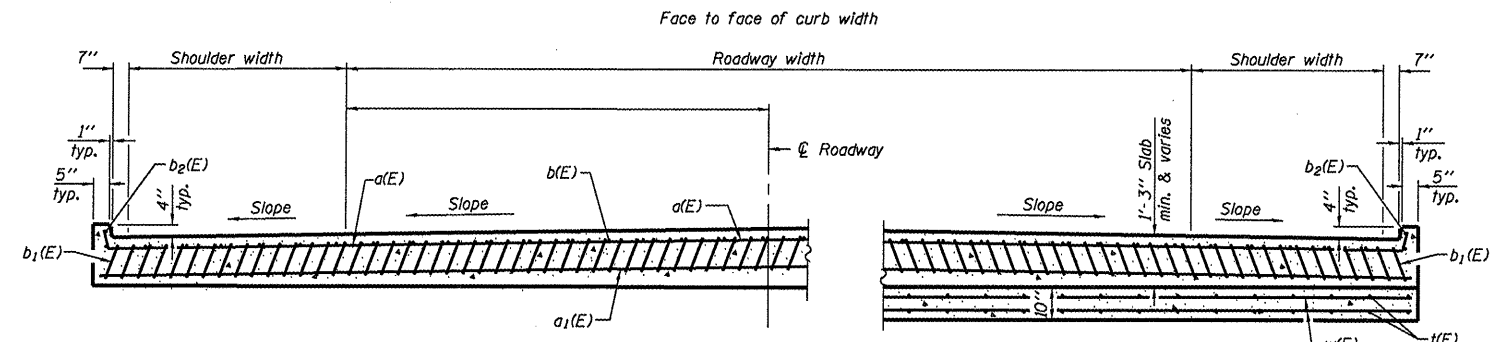


PLAN



SECTION C-C

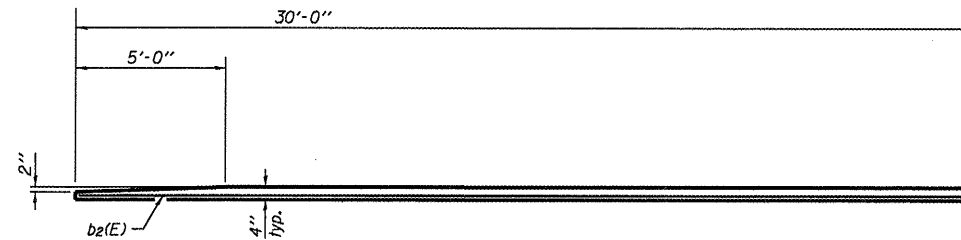


NEAR ABUTMENT

SECTION D-D

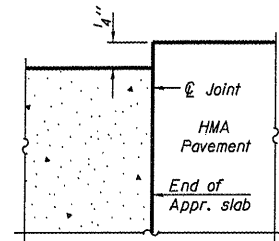
(See Plan for dimensions not shown)

AT APPROACH FOOTING



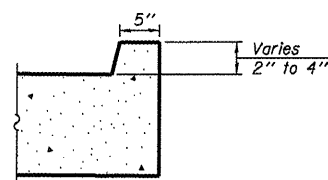
VIEW E-E

(Curb)

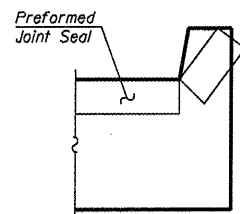


FLEXIBLE PAVEMENT

DETAIL A

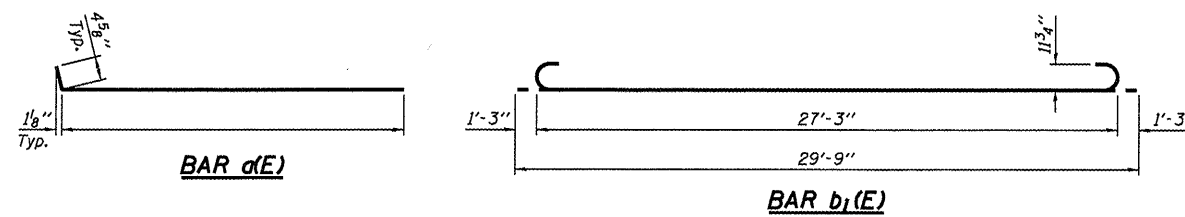


VIEW B-B



VIEW F-F

Angle Preformed Joint Seal at 45° at curbs when req'd for drainage.



BAR a(E)

BAR b1(E)

Notes:

Approach slab shall be paid for as Concrete Superstructure.
 Approach footing concrete shall be paid for as Concrete Structures.
 Reinforcement shall be paid for as Reinforcement Bars, Epoxy Coated.
 The approach footing maximum applied service bearing pressure (Q_{max}) = 2.0 ksf.
 For bar splicer details, see sheet 3 of 3.
 Cost of excavation for approach footing included with Concrete Structures.
 a(E), a1(E) and w(E) bar spacings measured along \bar{C} Rdwy.

* Tilt #9 b1(E) bars as required to maintain clearance.

** #5 Bar splicer for a1(E) bars bottom of slab

#4 Bar splicer for a(E) bars top of slab

#5 Bar splicer for w(E) bars top & bottom of approach slab footing

*** Cost included with Concrete Superstructure.

BILL OF MATERIAL

Bar	No.	Size	Length	Shape
a(E)	46	#4	18'-6"	—
a1(E)	88	#5	18'-6"	—
b(E)	27	#4	29'-8"	—
b1(E)	81	#9	29'-9"	—
b2(E)	2	#4	29'-8"	—
k(E)	66	#4	9'-8"	—
w(E)	76	#5	18'-6"	—
Concrete Superstructure	Cu. Yd.		55.1	
Concrete Structures	Cu. Yd.		11.6	
Reinforcement Bars, Epoxy Coated	Pound		12927	

FILE NAME =	USER NAME = spurlookd	DESIGNED - DBS	REVISED -
ce:\pw\work\pwidot\spurlookd\0302674\036626-shd-details.dgn		DRAWN - DBS	REVISED -
PLOT SCALE = 100.0000 / 1 in.		CHECKED -	REVISED -
PLOT DATE = 4/2/2012		DATE - MARCH 2012	REVISED -

STATE OF ILLINOIS
DEPARTMENT OF TRANSPORTATION

BRIDGE APPROACH SLAB DETAILS
STRUCTURE NO. 053-163

SCALE: SHEET NO. 2 OF 3 SHEETS STA. 310+39.62 TO STA. 310+88.62

F.A.P. RTE.	SECTION	COUNTY	TOTAL SHEETS	SHEET NO.
786	(97-15D, BR-11)	LIVINGSTON	8	7
CONTRACT NO. 66C26			ILLINOIS FED. AID PROJECT	