

INDEX OF SHEETS

1. COVER SHEET
2. GENERAL NOTES
3. SUMMARY OF QUANTITIES
4. TYPICAL SECTION
5. STRUCTURE PLANS

STANDARDS

- 000001-06 STANDARD SYMBOLS, ABBREVIATIONS AND PATTERNS
- 001006 DECIMAL OF AN INCH AND OF A FOOT
- 701001-02 OFF-ROAD OPERATIONS 2L, 2W, MORE THAN 15' (4.5 m) AWAY
- 701006-03 OFF-ROAD OPERATIONS 2L, 2W, 15' (4.5 m) TO 24" (600 mm) FROM PAVEMENT EDGE
- 701201-04 LANE CLOSURE, 2L, 2W, DAY ONLY, FOR SPEEDS  $\leq$  45 MPH
- 701301-04 LANE CLOSURE, 2L, 2W, SHORT TIME OPERATIONS
- 701901-02 TRAFFIC CONTROL DEVICES

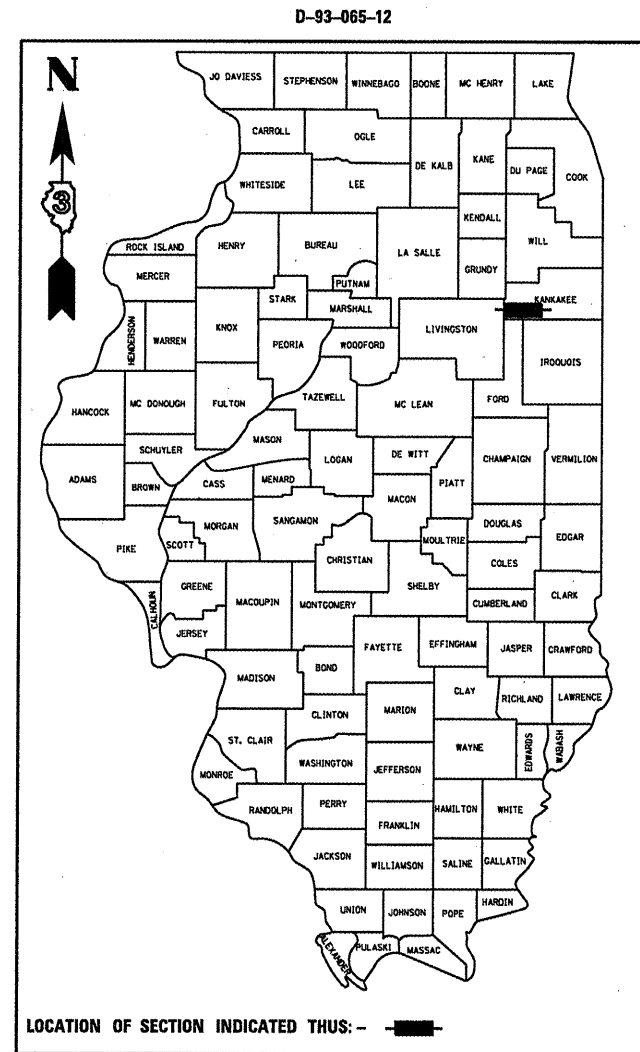
STATE OF ILLINOIS  
DEPARTMENT OF TRANSPORTATION  
DIVISION OF HIGHWAYS  
**PROPOSED  
HIGHWAY PLANS**

FAP 796 ROUTE (IL 115)  
SECTION (104BR)

**BRIDGE REPAIR  
FURNISHING & ERECTING STRUCTURAL STEEL  
FOR SLAB SUPPORT ON SN 046-0067  
KANKAKEE COUNTY**

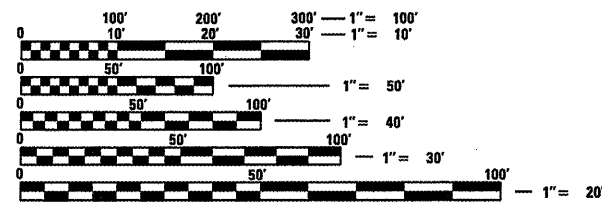
C-93-126-12

F.A.P. RTE.	SECTION	COUNTY	TOTAL SHEETS	SHEET NO.
796	(104BR)	KANKAKEE	5	1
		ILLINOIS	CONTRACT NO. 66C30	



RURAL  
MIN ARTERIAL NON-URB  
FAP 796 (IL 115)  
2011

ADT	500
P.V.	91.6%
S.U.	5.8%
M.U.	2.6%



FULL SIZE PLANS HAVE BEEN PREPARED USING STANDARD ENGINEERING SCALES. REDUCED SIZED PLANS WILL NOT CONFORM TO STANDARD SCALES. IN MAKING MEASUREMENTS ON REDUCED PLANS, THE ABOVE SCALES MAY BE USED.

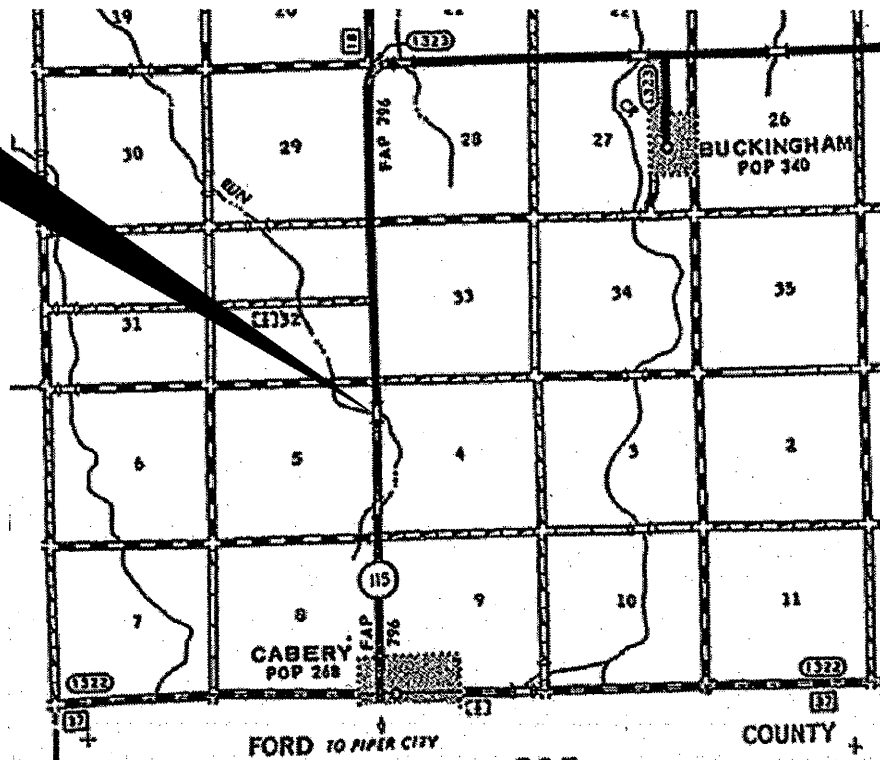
J.U.L.I.E.  
JOINT UTILITY LOCATION INFORMATION FOR EXCAVATION  
1-800-892-0123  
OR 811

DISTRICT NO. (815)-434-6131

PROJECT ENGINEER: JOE KANNEL, P.E.  
UNIT CHIEF: RON WOODSHANK  
TOWNSHIP: NORTON

CONTRACT NO. 66C30

**PROJECT LOCATION**  
SN 046-0067  
STA. 953 + 12



GROSS LENGTH = 26 FT. = .005 MILE  
NET LENGTH = 26 FT. = 0.005 MILE

STATE OF ILLINOIS  
DEPARTMENT OF TRANSPORTATION  
DIVISION OF HIGHWAYS

SUBMITTED 4/6 20 12  
*Eric S. Theobaldson*  
DEPUTY DIRECTOR OF HIGHWAYS, REGION ENGINEER

May 11 20 12  
*John D. Baumgall, P.E.*  
ENGINEER OF DESIGN AND ENVIRONMENT

May 11 20 12  
*William R. Freyer*  
DIRECTOR OF HIGHWAYS, CHIEF ENGINEER

**PRINTED BY THE AUTHORITY  
OF THE STATE OF ILLINOIS**

GENERAL NOTES

PLAN DIMENSIONS AND DETAILS RELATIVE TO EXISTING PLANS ARE SUBJECT TO ROUTINE VARIATIONS. THE CONTRACTOR SHALL FIELD VERIFY EXISTING DIMENSIONS AND DETAILS AFFECTING NEW CONSTRUCTION AND MAKE NECESSARY APPROVED ADJUSTMENTS PRIOR TO CONSTRUCTION OR ORDERING OF MATERIALS. SUCH VARIATIONS SHALL NOT BE CAUSE FOR ADDITIONAL COMPENSATION FOR A CHANGE IN THE SCOPE OF THE WORK. HOWEVER, THE CONTRACTOR WILL BE PAID FOR THE QUANTITY FURNISHED BASED UPON THE UNIT BID PRICE FOR THE WORK.

FOR STABILIZATION, ALL TYPE III BARRICADES SHALL REQUIRE A MINIMUM OF FOUR SAND BAGS PER BARRICADE.

ANY REFERENCE TO A STANDARD IN THESE PLANS SHALL BE INTERPRETED TO MEAN THE EDITION AS INDICATED BY THE SUBNUMBER LISTED ON THE INDEX OF SHEETS OR THE COPY OF THE STANDARD INCLUDED IN THESE PLANS.

COMMITMENTS:

ALL EXISTING SOILS OR EMBANKMENTS DISTURBED OR EXCAVATED DUE TO THE CONTRACTOR'S CONSTRUCTION OPERATIONS SHALL REMAIN ON SITE AND SHALL BE DISPOSED OF WITHIN THE LIMITS OF THE STATE RIGHT OF WAY.

STATE OF ILLINOIS  
DEPARTMENT OF TRANSPORTATION  
DISTRICT THREE

PREPARED BY: Don Beoni  
DISTRICT STUDIES & PLANS ENGINEER

DATE: 4-6-12

EXAMINED BY: Robert K. Jones  
DISTRICT CONSTRUCTION ENGINEER

James L. Walker  
DISTRICT MATERIALS ENGINEER

Steve A. Busch  
DISTRICT OPERATIONS ENGINEER

FILE NAME =	USER NAME = petelyj	DESIGNED - RON WOODSHANK	REVISED -
c:\pwwork\pwidot\petelyj\d8382983\0366	30-sht-ALL SHEETS.dgn	DRAWN - RON WOODSHANK	REVISED -
	PLOT SCALE = 100.0000' / in.	CHECKED -	REVISED -
	PLOT DATE = 4/5/2012	DATE -	REVISED -

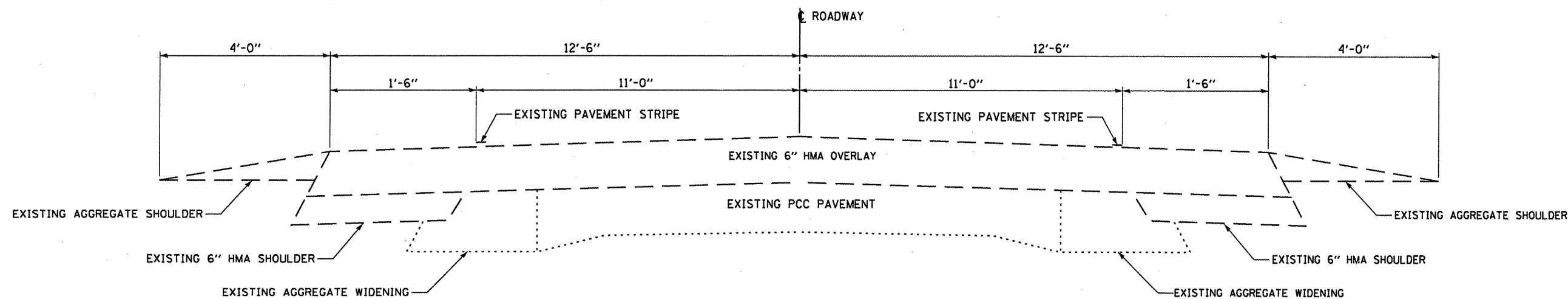
**STATE OF ILLINOIS  
DEPARTMENT OF TRANSPORTATION**

**GENERAL NOTES**

SCALE: SHEET NO. 1 OF 1 SHEETS STA. TO STA.

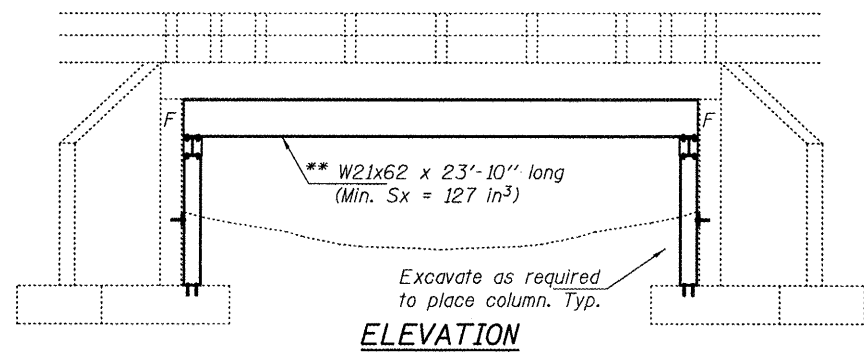
F.A.P. RTE. 796	SECTION (104BR)	COUNTY KANKAKEE	TOTAL SHEETS 5	SHEET NO. 2
CONTRACT NO. 66C30				
ILLINOIS FED. AID PROJECT				

CODE NO.	ITEM	UNIT	TOTAL QUANTITY	CONSTR. CODE
				STATE FUNDS 100% STATE ROADWAY 0014 RURAL
50500405	FURNISHING AND ERECTING STRUCTURAL STEEL	POUND	18590	18590
67100100	MOBILIZATION	L SUM	1	1
70100450	TRAFFIC CONTROL AND PROTECTION, STANDARD 701201	L SUM	1	1

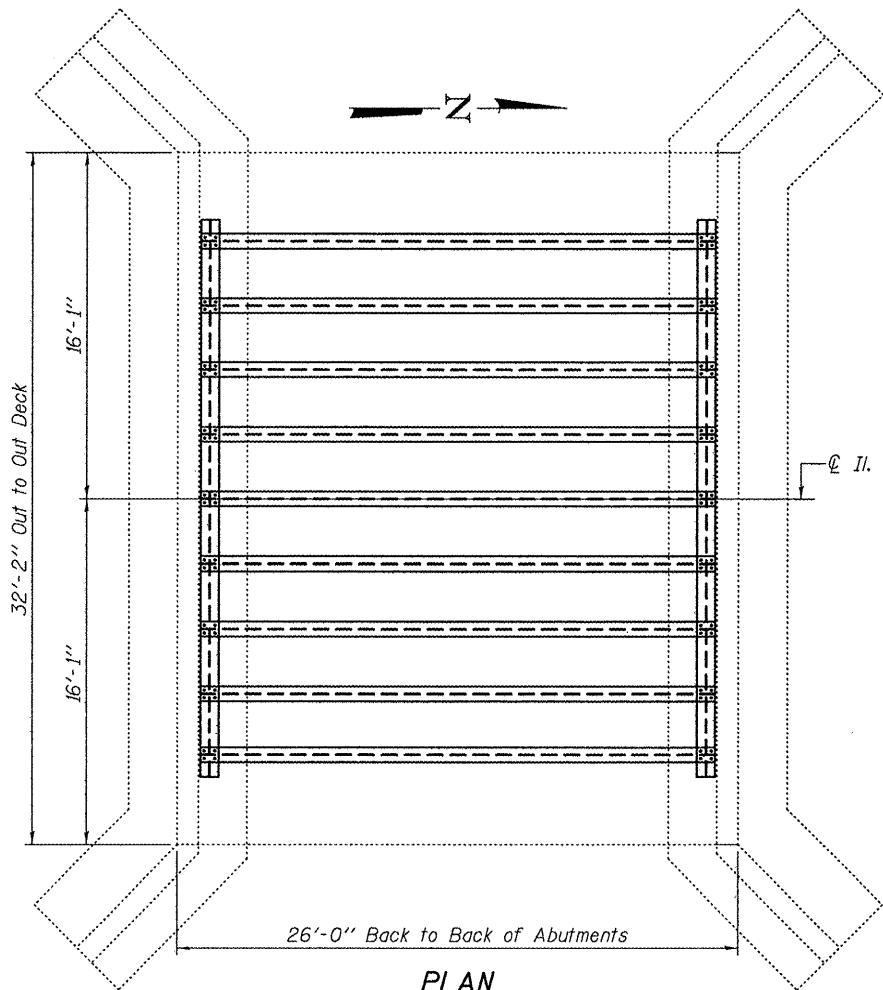


**TYPICAL SECTION**

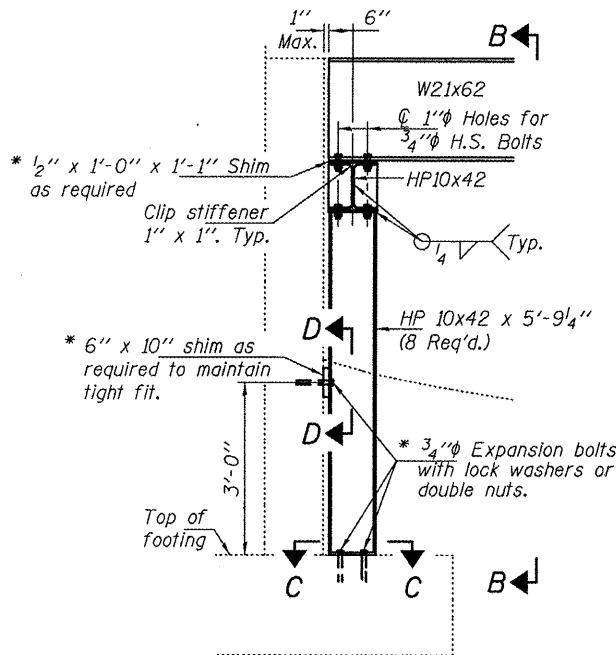
FILE NAME = c:\pr-work\p\patel\j\d0302903\0366	USER NAME = patel,j	DESIGNED - RON WOODSHANK	REVISED -	<b>STATE OF ILLINOIS</b> <b>DEPARTMENT OF TRANSPORTATION</b>	<b>TYPICAL SECTION</b>	F.A.P. RTE. 796	SECTION (104BR)	COUNTY KANKAKEE	TOTAL SHEETS 5	SHEET NO. 4			
	PLOT SCALE = 100.0000' / in.	CHECKED -	REVISED -			SCALE:	SHEET 1 OF 1 SHEETS	STA.	TO STA.	CONTRACT NO. 66C30			
	PLOT DATE = 4/5/2012	DATE -	REVISED -			ILLINOIS FED. AID PROJECT							



**ELEVATION**

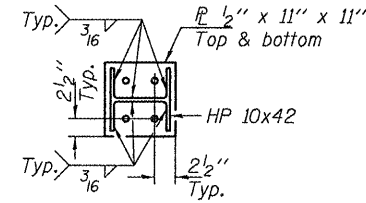


**PLAN**

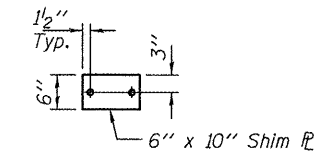


**SECTION A-A**

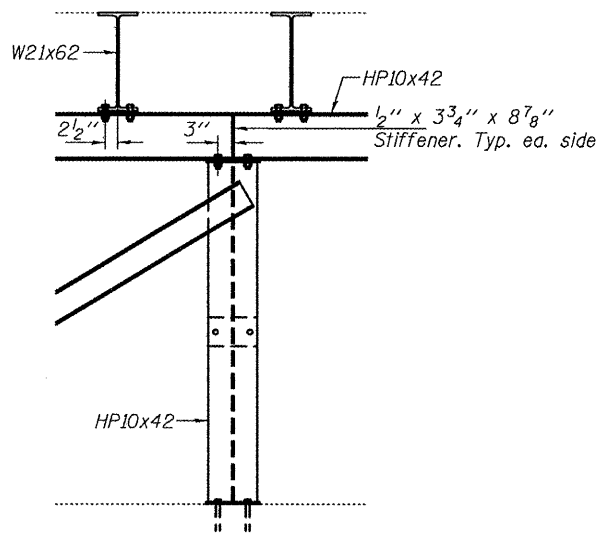
\* Cost included with Furnishing & Erecting Structural Steel.



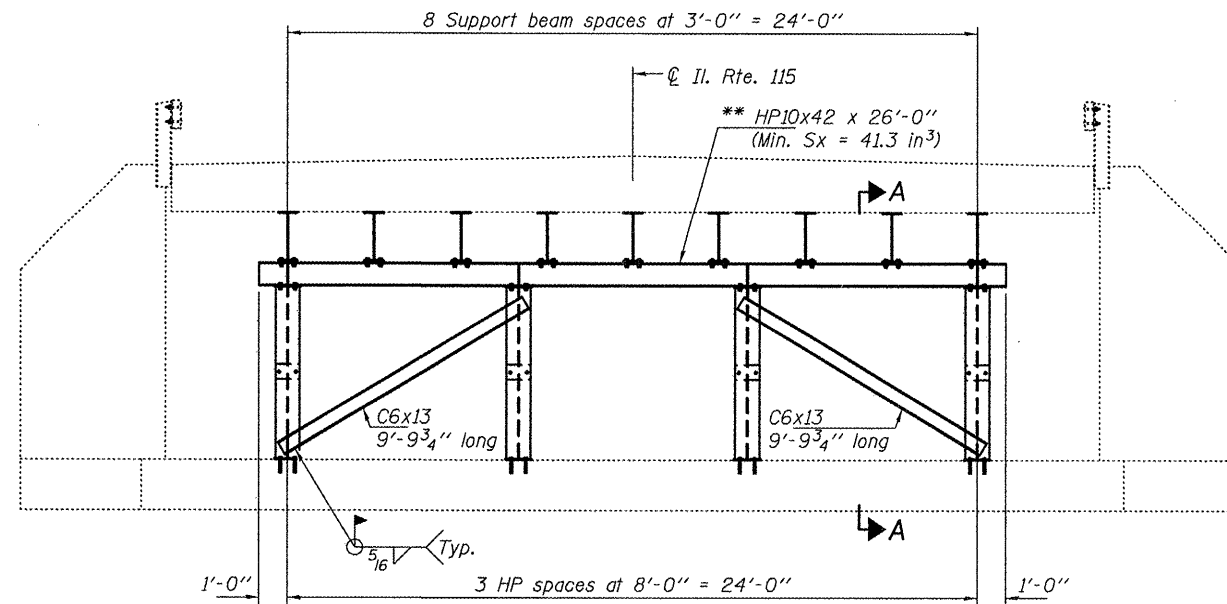
**SECTION C-C**



**SECTION D-D**



**SECTION B-B**



**CROSS SECTION**

\*\* Contractor is to verify beam length prior to ordering material. Other sections meeting the section modulus requirements shown may be allowed subject to approval by the Bureau of Bridges and Structures. Maximum Girder depth = 21". No additional payment will be allowed if the contractor chooses a heavier steel section than the one specified in the plans.

**GENERAL NOTES**

All structural steel shall conform to AASHTO Classification M-270 Gr. 36, unless otherwise noted.  
 Plan dimensions and details relative to existing plans are subject to nominal construction variations. The Contractor shall field verify existing dimensions and details affecting new construction and make necessary approved adjustments prior to construction or ordering of materials. Such variations shall not be cause for additional compensation for a change in scope of the work, however, the Contractor will be paid for the quantity actually furnished at the unit price bid for the work.  
 The contractor is advised that the existing slab is in a deteriorated condition with reduced load carrying capacity. It is the contractors responsibility to account for the condition of the slab when developing construction procedures.  
 See Section 584 of the Standard Specifications for Epoxy Grouting of Threaded Rods; Minimum embedment 9".  
 If the contractor's procedure for placement of beams involves placement of cranes or other heavy equipment on the bridge, a detailed procedure shall be submitted to the Engineer for approval. The procedure shall include calculations, prepared and sealed by an Illinois Licensed Structural Engineer, verifying that the equipment and procedure used will not overstress the existing slab. To distribute load and protect the existing surface, in all cases a double layer mat of heavy timbers shall be used at all times under crane tracks or wheels and any outriggers in the down position. If necessary, shims shall be used under the crane mat to ensure uniform contact with the underlying surface.  
 The cost of epoxy grouting threaded rods on the abutments shall be included with Furnishing and Erecting Structural Steel.  
 The Contractor has the option of using used steel. See Special Provisions.

**TOTAL BILL OF MATERIAL**

ITEM	UNIT	QUANTITY
Furnishing and Erecting Structural Steel	Pound	18590



DESIGNED: [Signature]  
 CHECKED: [Signature]  
 DRAWN: [Signature]  
 CHECKED: [Signature]

EXAMINED: [Signature]  
 PASSED: [Signature]  
 DATE: MAY 8, 2012

STATE OF ILLINOIS  
 DEPARTMENT OF TRANSPORTATION

PLAN AND ELEVATION  
 IL 115 OVER RED DICK CREEK  
 SN 046-0067  
 SHEET NO. 1 OF 1 SHEETS

F.A.P. RTE. 796	SECTION 104BR1	COUNTY KANKAKEE	TOTAL SHEETS 5	SHEET NO. 5
				CONTRACT NO. 66C30
ILLINOIS FED. AID PROJECT				