

F.A.P. RTE.	SECTION	COUNTY	TOTAL SHEETS	SHEET NO.
681	(113C)I	LIVINGSTON	7	1
		ILLINOIS	CONTRACT NO. 66C31	

STATE OF ILLINOIS
DEPARTMENT OF TRANSPORTATION
DIVISION OF HIGHWAYS

PROPOSED
HIGHWAY PLANS

FAP 681 ROUTE (IL 116)
SECTION (113C)I

CULVERT REPAIR
CONSTRUCTING CONCRETE SLAB
SUPPORT ON SN 053-2557
LIVINGSTON COUNTY

C-93-127-12

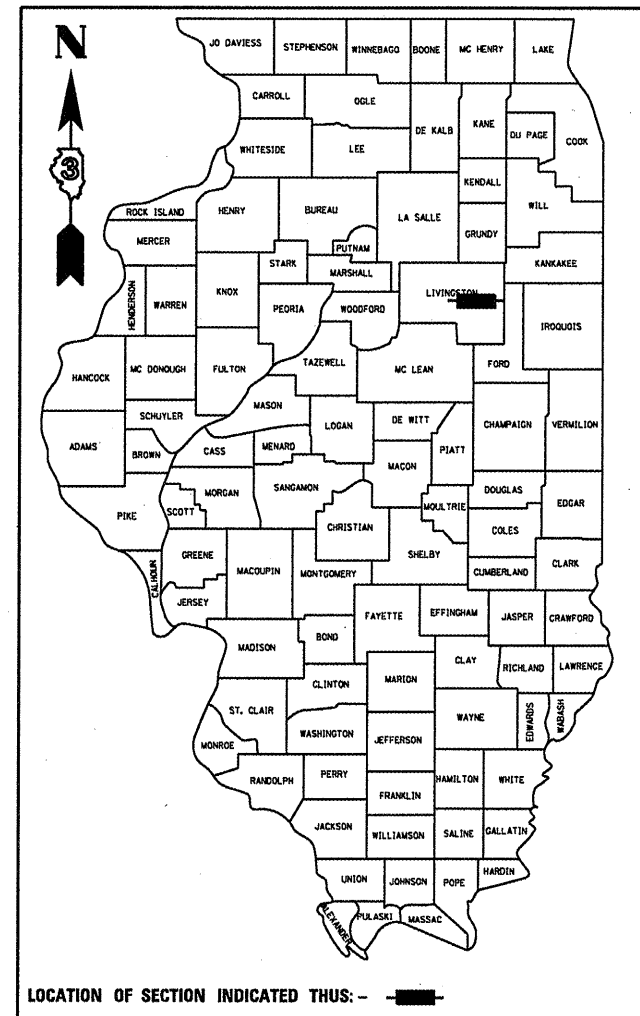
INDEX OF SHEETS

1. COVER SHEET
2. GENERAL NOTES
3. SUMMARY OF QUANTITIES
4. ROADWAY DETAILS
5. TYPICAL SECTION
6. GENERAL PLAN & ELEVATION
7. BAR SPLICER ASSEMBLY & MECHANICAL SPLICER DETAILS

STANDARDS

- 000001-06 STANDARD SYMBOLS, ABBREVIATIONS AND PATTERNS
- 001006 DECIMAL OF AN INCH AND OF A FOOT
- 701001-02 OFF-ROAD OPERATIONS 2L, 2W, MORE THAN 15' (4.5 m) AWAY
- 701006-03 OFF-ROAD OPERATIONS 2L, 2W, 15' (4.5 m) TO 24" (600 mm) FROM PAVEMENT EDGE
- 701201-04 LANE CLOSURE, 2L, 2W, DAY ONLY, FOR SPEEDS \leq 45 MPH
- 701301-04 LANE CLOSURE, 2L, 2W, SHORT TIME OPERATIONS
- 701901-02 TRAFFIC CONTROL DEVICES

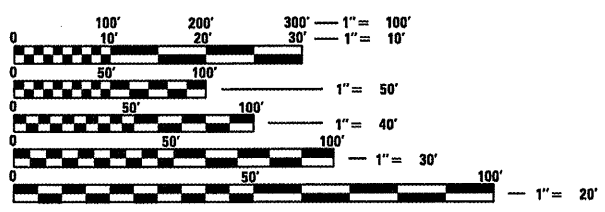
D-93-066-12



LOCATION OF SECTION INDICATED THUS: —■—

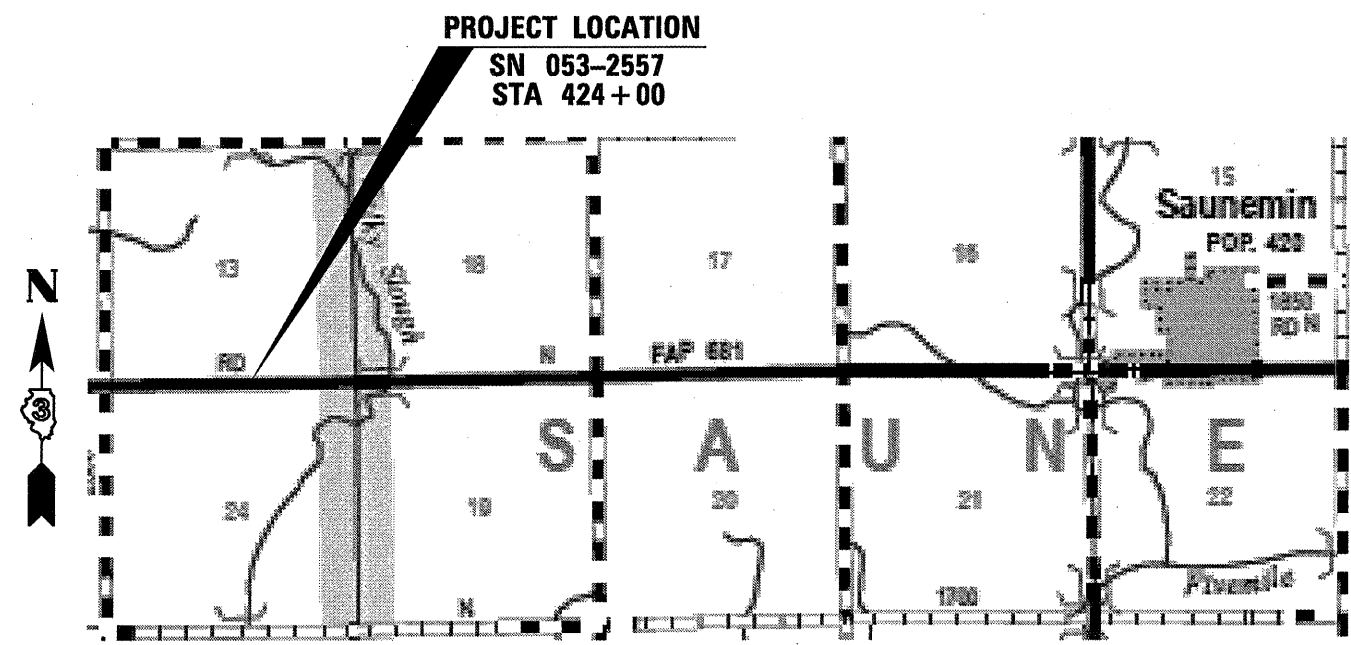
RURAL
MIN ARTERIAL NON-URB
FAP 681 (IL 116)
2011

ADT	1800
P.V.	89.44%
S.U.	2.78%
M.U.	7.78%



FULL SIZE PLANS HAVE BEEN PREPARED USING STANDARD ENGINEERING SCALES. REDUCED SIZED PLANS WILL NOT CONFORM TO STANDARD SCALES. IN MAKING MEASUREMENTS ON REDUCED PLANS, THE ABOVE SCALES MAY BE USED.

J.U.L.I.E.
 JOINT UTILITY LOCATION INFORMATION FOR EXCAVATION
 1-800-892-0123
 OR 811



DISTRICT NO. (815)-434-6131
PROJECT ENGINEER: JOE KANNEL, P.E.
UNIT CHIEF: RON WOODSHANK
TOWNSHIP: OWEGO

GROSS LENGTH = 23 FT. = 0.004 MILE
 NET LENGTH = 23 FT. = 0.004 MILE

CONTRACT NO. 66C31

STATE OF ILLINOIS
 DEPARTMENT OF TRANSPORTATION
 DIVISION OF HIGHWAYS

SUBMITTED 4/6 2012
Eric S. Theriault
 DEPUTY DIRECTOR OF HIGHWAYS, REGION ENGINEER

May 11 2012
John D. Baranzelli, P.E.
 acting ENGINEER OF DESIGN AND ENVIRONMENT

May 11 2012
William R. Frey, Jr.
 acting DIRECTOR OF HIGHWAYS, CHIEF ENGINEER

PRINTED BY THE AUTHORITY
OF THE STATE OF ILLINOIS