

F.A.P. RTE.	SECTION	COUNTY	TOTAL SHEETS	SHEET NO.
643	(11B)-1	STARK	9	1
		ILLINOIS	CONTRACT NO. 68B06	

06-15-12 LETTING ITEM 126

INDEX OF SHEETS

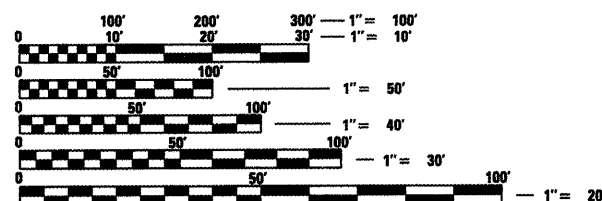
- 1 COVER SHEET
- 2 GENERAL NOTES/COMMITMENTS/JOB SPECIFIC NOTES
- 3 SUMMARY OF QUANTITIES
- 4 TYPICAL SECTIONS
- 5 SCHEDULE OF QUANTITIES
- 6 PLAN VIEW
- 7-9 STRUCTURAL DETAILS

HIGHWAY STANDARDS

- 701001-02
- 701006-03
- 701301-04
- 701311-03
- 701316-06
- 701901-02

DESIGN DESIGNATION

ADT = 1700 (2011)
 MU = 2.35%
 SU = 3.53%



FULL SIZE PLANS HAVE BEEN PREPARED USING STANDARD ENGINEERING SCALES. REDUCED SIZED PLANS WILL NOT CONFORM TO STANDARD SCALES. IN MAKING MEASUREMENTS ON REDUCED PLANS, THE ABOVE SCALES MAY BE USED.

J.U.L.I.E.
 JOINT UTILITY LOCATION INFORMATION FOR EXCAVATION
 1-800-892-0123
 OR 811

PROJECT ENGINEER RICH DOTSON
 PROJECT MANAGER ANNA GHIDINA

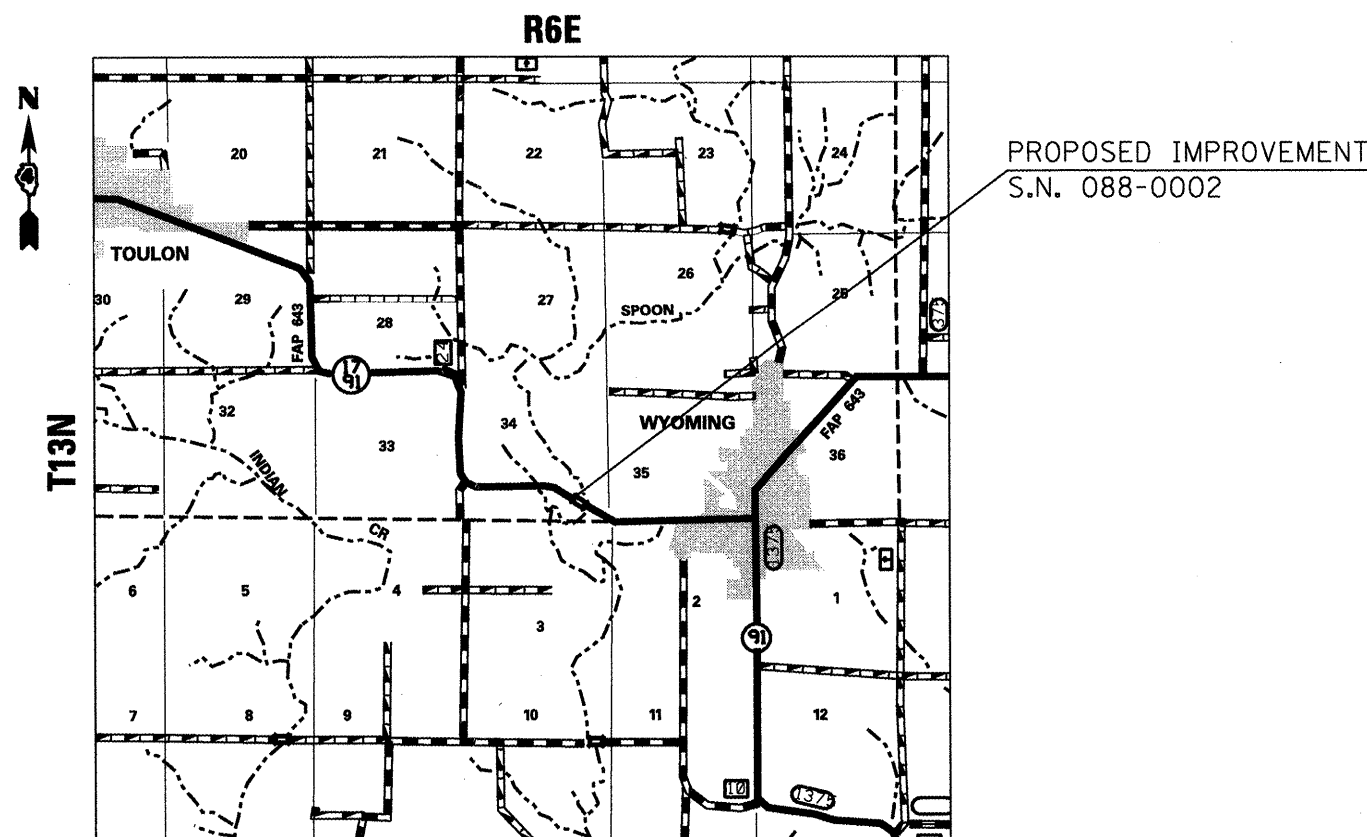
CATALOG NO. 034817-00D
 CONTRACT NO. 68B06

STATE OF ILLINOIS
 DEPARTMENT OF TRANSPORTATION
 DIVISION OF HIGHWAYS
**PROPOSED
 HIGHWAY PLANS**

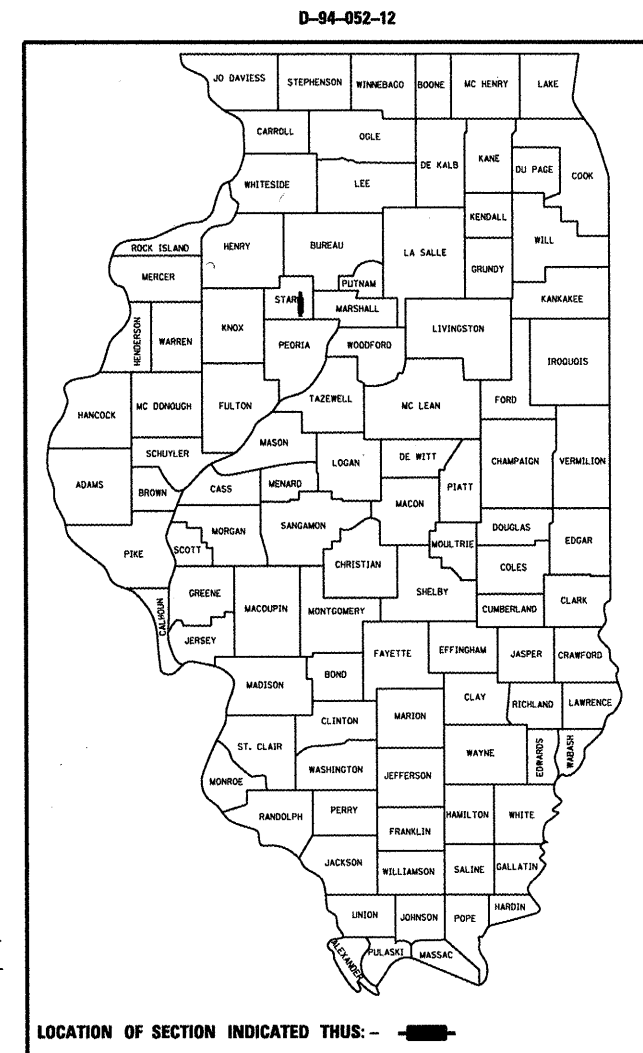
FAP ROUTE 643 (IL 17/IL 91)
 SECTION (11B)-1

EMERGENCY BRIDGE BEAM BRACING
 STARK COUNTY

C-94-093-12



GROSS LENGTH = 260 FT. = 0.05 MILE
 NET LENGTH = 260 FT. = 0.05 MILE



LOCATION OF SECTION INDICATED THUS: - [rectangle symbol] -

STATE OF ILLINOIS
 DEPARTMENT OF TRANSPORTATION
 DIVISION OF HIGHWAYS

SUBMITTED *April 20 2012*

[Signature]
 DEPUTY DIRECTOR OF HIGHWAYS, REGION ENGINEER

May 11 2012
John D. Baranelli, P.E.
 ENGINEER OF DESIGN AND ENVIRONMENT

May 11 2012
William R. Freyer
 DIRECTOR OF HIGHWAYS, CHIEF ENGINEER

PRINTED BY THE AUTHORITY
 OF THE STATE OF ILLINOIS

GENERAL NOTES

Plan dimensions and details relative to existing structure have been taken from existing plans and are subject to nominal construction variations. It shall be the Contractor's responsibility to verify such dimensions and details in the field and make necessary approved adjustments prior to construction or ordering of materials. Such variations shall not be cause for additional compensation for a change in the scope of the work, however, the Contractor will be paid for the quantity actually furnished at the unit price bid for the work.

ENVIRONMENTAL REVIEWS

Prior to the use of any proposed borrow areas, use areas (temporary access roads, detours, run-arounds, etc.) and/or waste areas, the Contractor shall file the required environmental resource request surveys according to Section 107.22 of the Standard Specifications. These surveys are required in order for the Department to conduct cultural and biological resource surveys for the proposed site.

Prior to any waste materials being removed from the construction site the required environmental resource surveys will need to be obtained and filed by the Contractor. Excess waste products removed from the construction site shall be disposed of as required in Section 202.03 of the Standard Specifications.

Any protruding metal bars shall be removed prior to the disposal of broken concrete at approved disposal sites.

The required environmental resource documentation shall include the following:

- * BDE Form 2289 (Environmental Survey Request)
- * A location map showing the size limits and location of the use area
- * Signed property owner agreement form-D4 P10100
- * Color photographs depicting the use area
- * Borrow Area Entry Agreement form-D4 P10101

Please note that a minimum of two weeks shall be allowed for the District to obtain the required environmental clearances.

COMMITMENTS

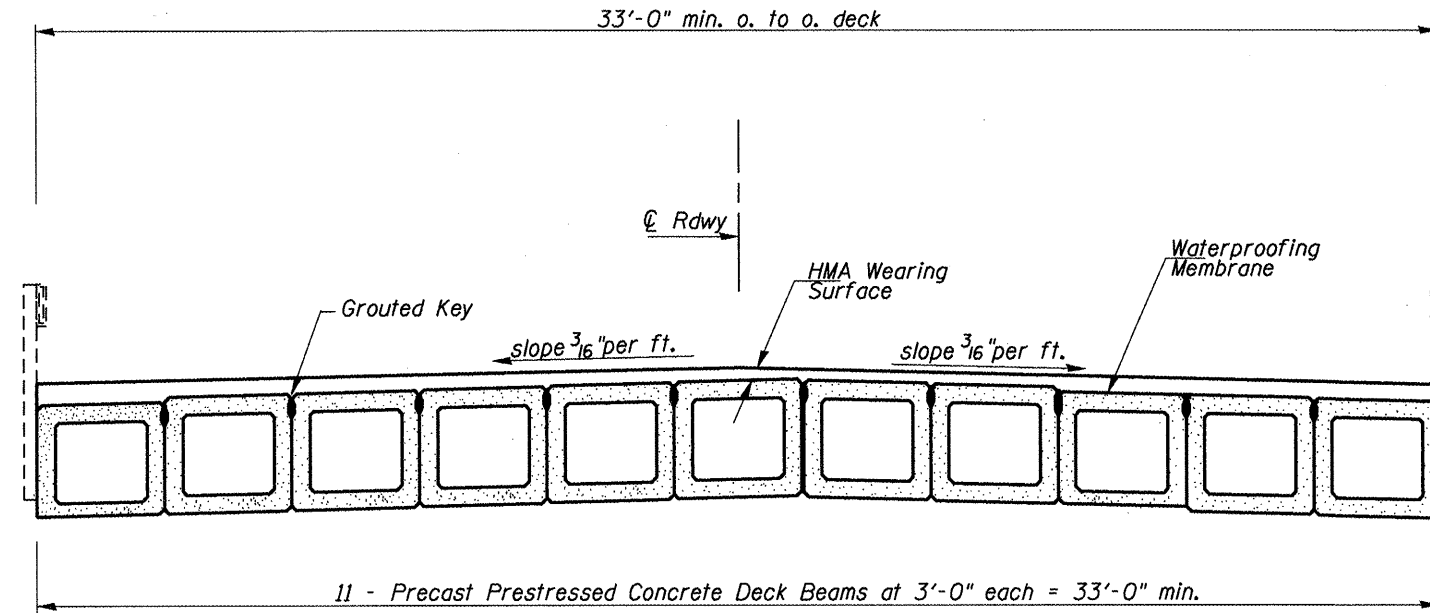
THERE ARE NO COMMITMENTS FOR THIS PROJECT.

JOB SPECIFIC NOTES

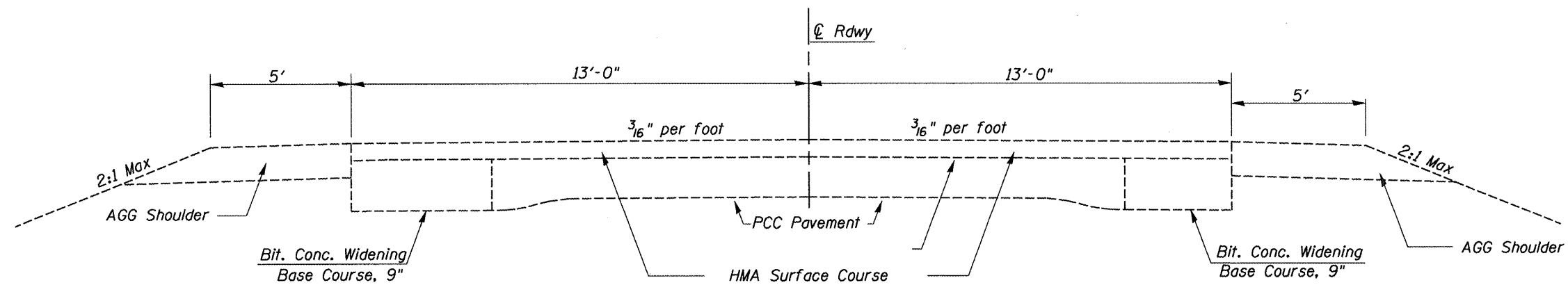
DUE TO THE DETERIORATION OF THE CONCRETE DECK BEAMS THE CONTRACTOR SHALL NOT STORE OR PARK ANY MATERIALS OR VEHICLES IN THE WB LANE DURING CONSTRUCTION FOR ANY PERIOD OF TIME.

FILE NAME = emergencybeamreplacement.dgn	USER NAME = ghudmeem	DESIGNED -	REVISED -	STATE OF ILLINOIS DEPARTMENT OF TRANSPORTATION	GENERAL NOTES & COMMITMENTS	F.A.P. RTE. 643	SECTION (11B)-1	COUNTY STARK	TOTAL SHEETS 9	SHEET NO. 2	
Default	PLOT SCALE = 48.0000' / 1" =	DRAWN -	REVISED -			CONTRACT NO. 68806		ILLINOIS FED. AID PROJECT			
	PLOT DATE = 4/20/2012	CHECKED -	REVISED -			SCALE:	SHEET	OF	SHEETS	STA.	TO STA.
		DATE -	REVISED -								

TYPICAL SECTIONS



EXISTING BRIDGE DECK

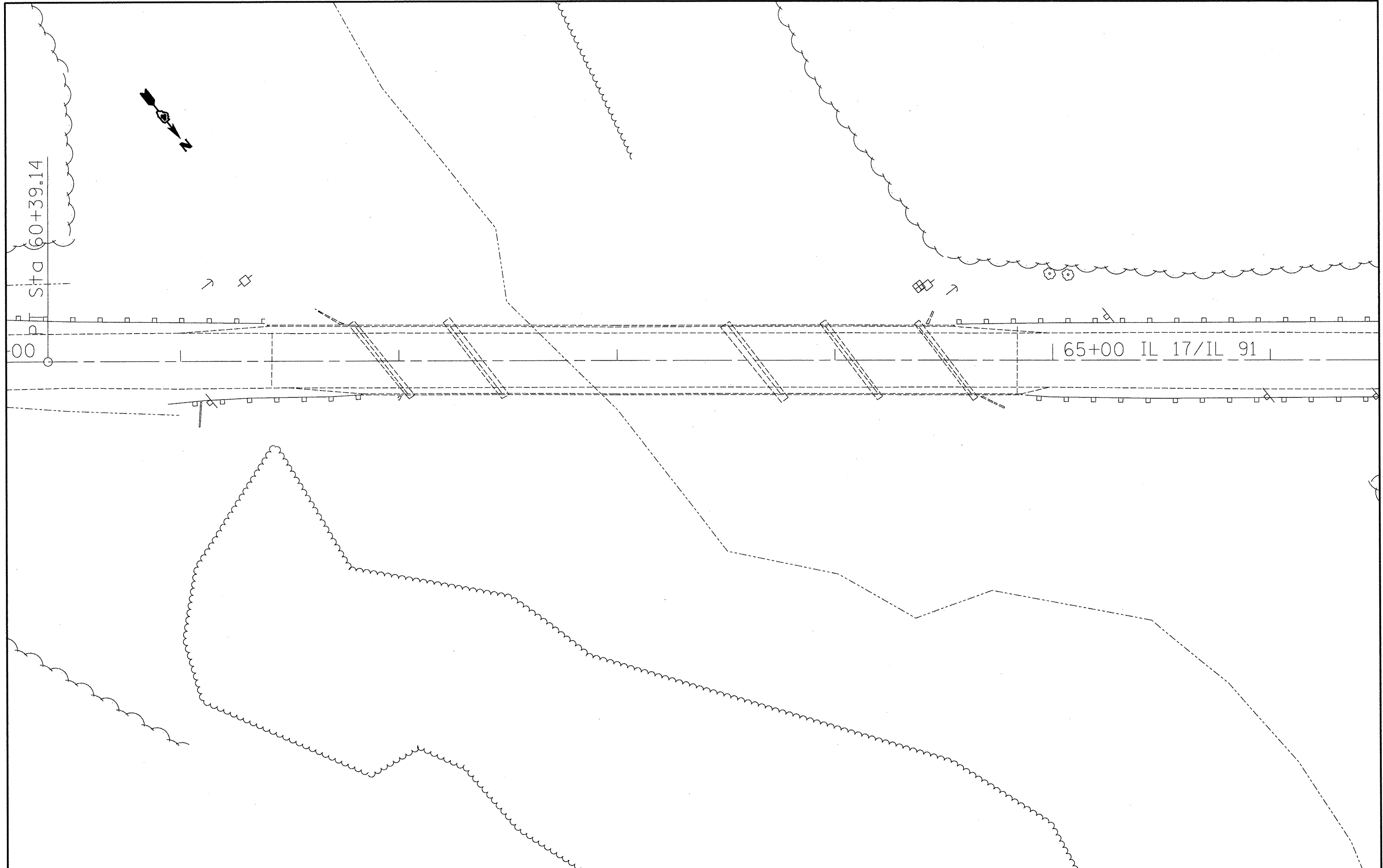


EXISTING PAVEMENT TYPICAL SECTION

FILE NAME = emergencybeamreplacement.dgn	USER NAME = ghd:neam	DESIGNED -	REVISED -	STATE OF ILLINOIS DEPARTMENT OF TRANSPORTATION	EXIST. TYPICAL SECTION	F.A.P. RTE. 643	SECTION (11B)-1	COUNTY STARK	TOTAL SHEETS 4	SHEET NO. 4		
Default	PLOT SCALE = 40.0000' / 1"	DRAWN -	REVISED -			SCALE:	SHEET OF SHEETS	STA.	TO STA.	CONTRACT NO. 68B06		
	PLOT DATE = 4/20/2012	CHECKED -	REVISED -			ILLINOIS FED. AID PROJECT						
		DATE -	REVISED -									

TRAFFIC CONTROL AND PROTECTION, STD. 701316 (SPL)	
LOCATION	EACH
JOBSITE	1

LOCATION	PAVEMENT MARK. REM. SQ. FT.	PAV'T MARK. TAPE, TYP III, 4"	WORK ZONE PAV'T MARK. REM. SQ. FT.	PAINT PAV'T MARK. - 4"		RAISED PAV'T MARK. REFLECTOR REPLACEMENT
		WHITE		YELLOW	WHITE	AMBER
		FOOT		FOOT	FOOT	FOOT
REMOVAL OF STAGE I	416.7					
STAGE II		1400				
REMOVAL OF STAGE II			462			
FINAL	52			2800	2800	10
TOTAL	469	1400	462	5600		10



FILE NAME = emergencybeamreplacement.dgn	USER NAME = ghidinaem	DESIGNED -	REVISED -	STATE OF ILLINOIS DEPARTMENT OF TRANSPORTATION	PLAN VIEW		F.A.P. RTE. 643	SECTION (11B)-1	COUNTY STARK	TOTAL SHEETS 9	SHEET NO. 6	
Default	PLOT SCALE = 40.0000' / 1in.	DRAWN -	REVISED -		SCALE:	SHEET	OF	SHEETS	STA.	TO STA.	CONTRACT NO. 68B06	
	PLOT DATE = 4/20/2012	CHECKED -	REVISED -								ILLINOIS FED. AID PROJECT	
		DATE -	REVISED -									

GENERAL NOTES

All structural steel shall conform to AASHTO Classification M-270 Gr. 36, unless otherwise noted.

Plan dimensions and details relative to existing plans are subject to nominal construction variations. The Contractor shall field verify existing dimensions and details affecting new construction and make necessary approved adjustments prior to construction or ordering of materials. Such variations shall not be cause for additional compensation for a change in scope of the work, however, the Contractor will be paid for the quantity actually furnished at the unit price bid for the work.

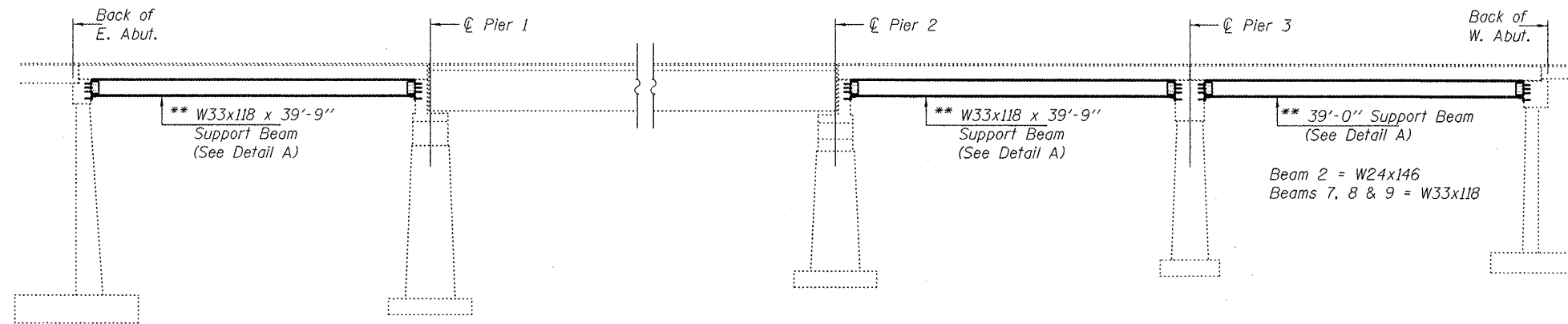
The contractor is advised that the existing PPC Deck Beams are in a deteriorated condition with reduced load carrying capacity. It is the Contractors responsibility to account for the condition of the beams when developing construction procedures.

See Section 584 of the Standard Specifications for Epoxy Grouting of Threaded Rods; Minimum embedment 9".

If the contractor's procedure for placement of beams involves placement of cranes or other heavy equipment on the bridge, a detailed procedure shall be submitted to the Engineer for approval. The procedure shall include calculations, prepared and sealed by an Illinois Licensed Structural Engineer, verifying that the equipment and procedure used will not overstress the existing beams. To distribute load to multiple beams and protect the exist. surface, in all cases a double layer mat of heavy timbers shall be used at all times under crane tracks or wheels and any outriggers in the down position. If necessary, shims shall be used under the crane mat to ensure uniform contact with the underlying beams.

The cost of epoxy grouting threaded rods on the pier cap, abutments and beams shall be included with Furnishing and Erecting Structural Steel.

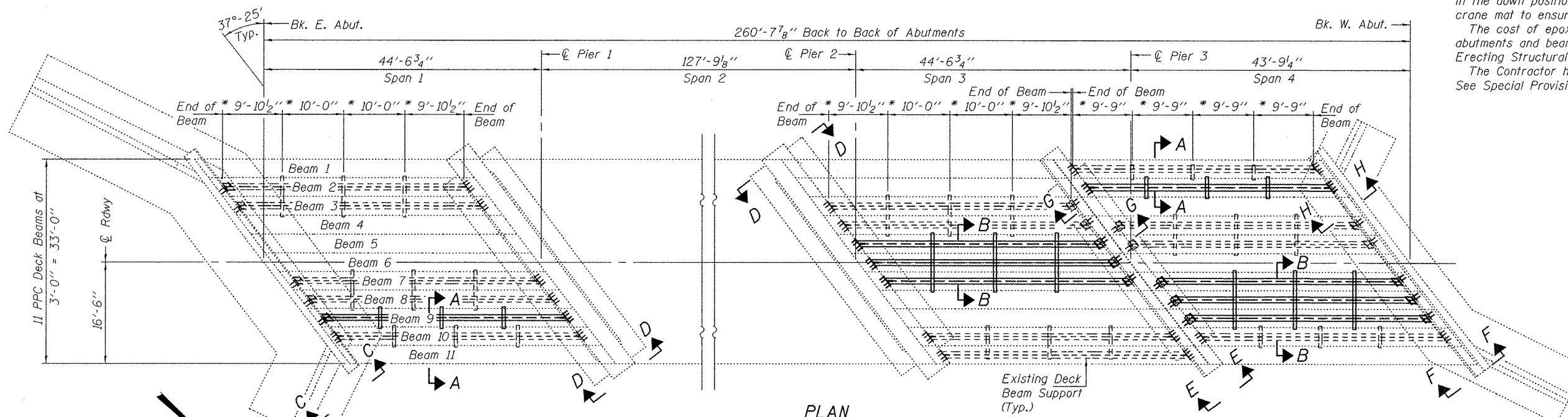
The Contractor has the option of using used steel. See Special Provisions.



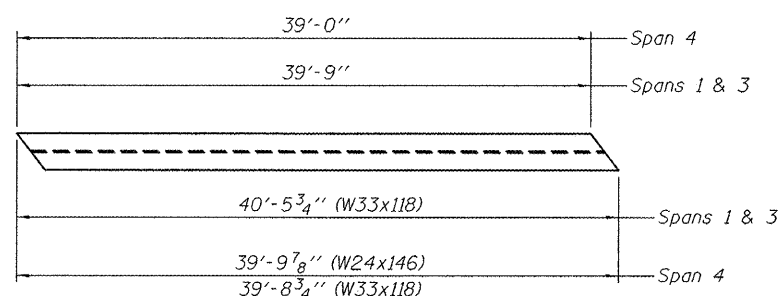
ELEVATION

* \varnothing Transverse tie \varnothing 's (3 per span). Place additional shims at midpoints between tie \varnothing 's. Securely weld shims to top flange of support beam. Minimum shim size is 6" x flange width.

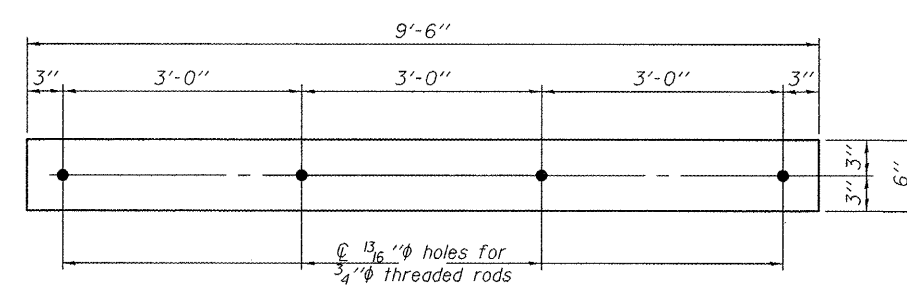
** Contractor is to verify beam length prior to ordering material. Other sections meeting the section modulus requirements shown may be allowed subject to approval by the Bureau of Bridges and Structures. Maximum Girder depth = 36". No additional payment will be allowed if the Contractor chooses a heavier steel section than the one specified in the plans. (Min. $S_x = 320 \text{ in}^3$)



PLAN

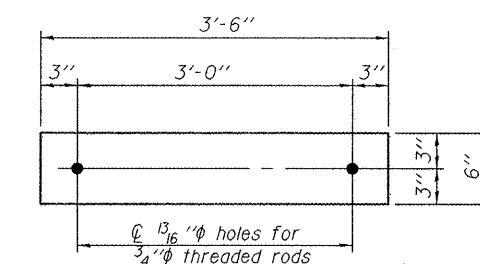


DETAIL A



TRANSVERSE TIE R B

\varnothing 1/2" x 6" x 9'-6"
(6 Required)

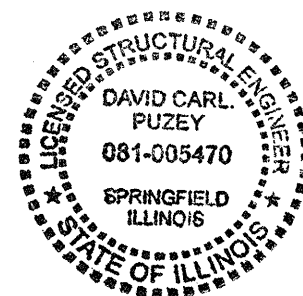


TRANSVERSE TIE R A

\varnothing 1/2" x 6" x 3'-6"
(6 Required)

TOTAL BILL OF MATERIAL

ITEM	UNIT	QUANTITY
Furnishing and Erecting Structural Steel	Pound	44,605

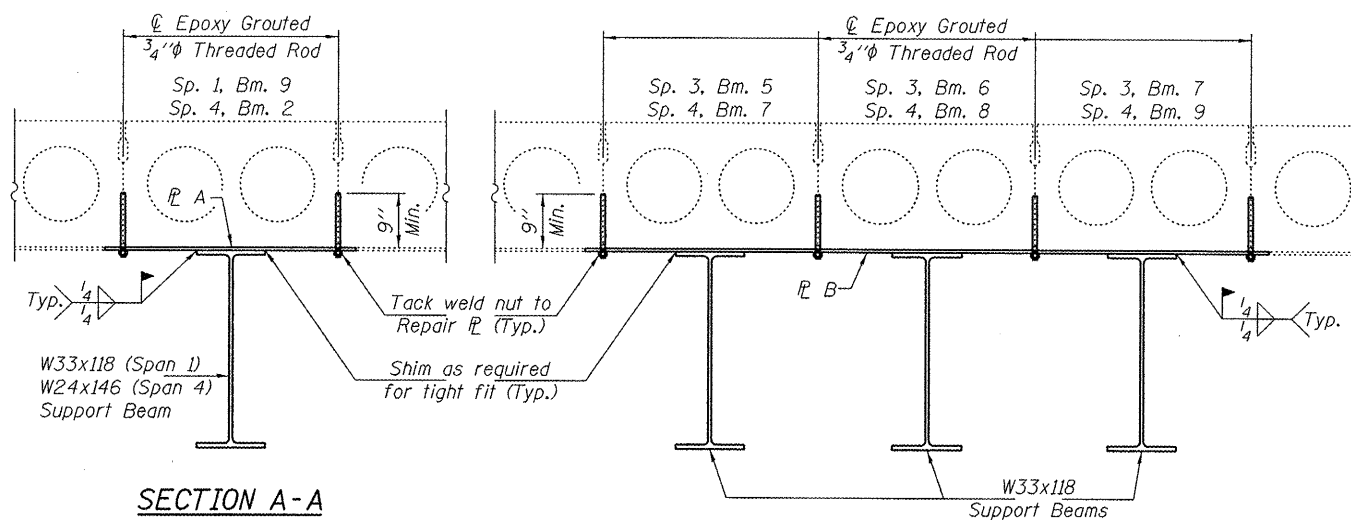


DESIGNED - <i>Myung Park</i>	EXAMINED - <i>James F. Jolly</i>	DATE - MAY 2, 2012
CHECKED - <i>Kyle M. Steffen</i>	PASSED - <i>David Carl Puzey</i>	
DRAWN - <i>Kyle M. Steffen</i>		
CHECKED - <i>VP</i>		

STATE OF ILLINOIS
DEPARTMENT OF TRANSPORTATION

GENERAL PLAN & ELEVATION
ILLINOIS ROUTE 17 OVER SPOON RIVER
SN 088-0002
SHEET NO. 1 OF 3 SHEETS

F.A.P. RTE. 643	SECTION (11B)E-1	COUNTY STARK	TOTAL SHEETS 9	SHEET NO. 7
			CONTRACT NO. 68B06	
ILLINOIS FED. AID PROJECT				

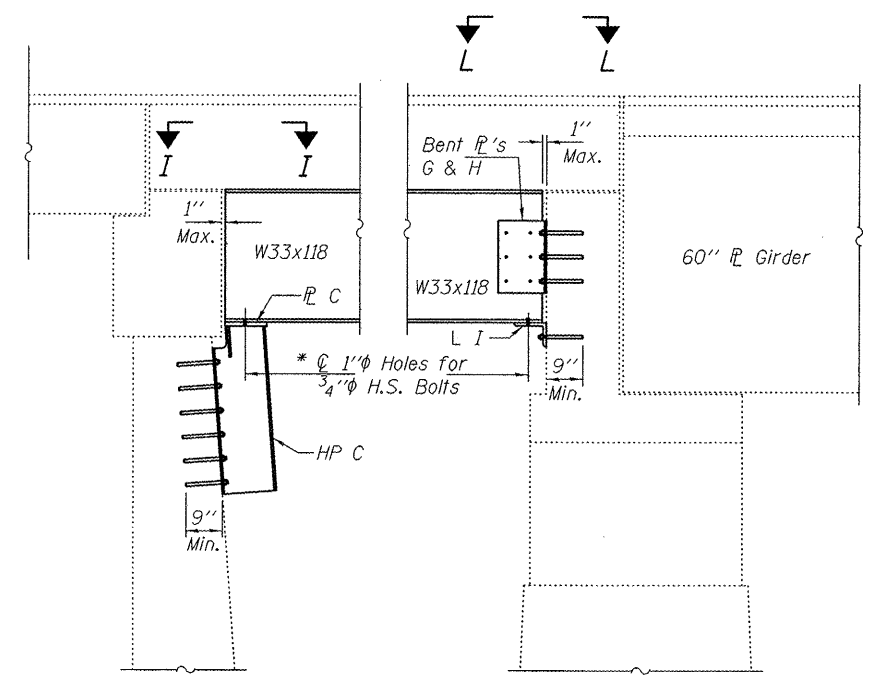


SECTION A-A

SECTION B-B

Note:
For Section L-L and structural steel details see sheet 3 of 3.

* Field drill holes in Support Beams using holes in R's & L's as template.

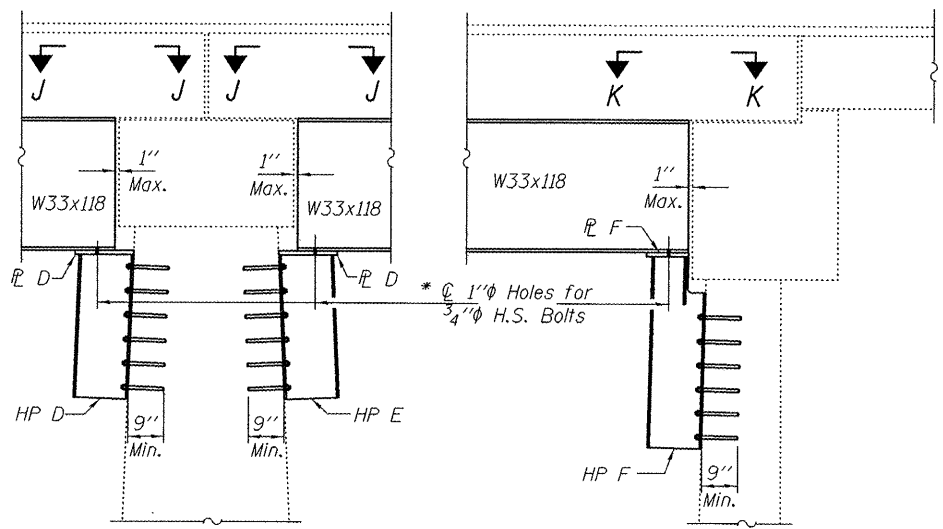


SECTION C-C

Span 1, Beam 9 at E. Abut.

SECTION D-D

Span 1, Beam 9 at Pier 1 & Span 3, Beams 5, 6 & 7 at Pier 2



SECTION E-E

Span 3, Beams 5, 6 & 7 and Span 4, Beams 7, 8 & 9 at Pier 3

SECTION F-F

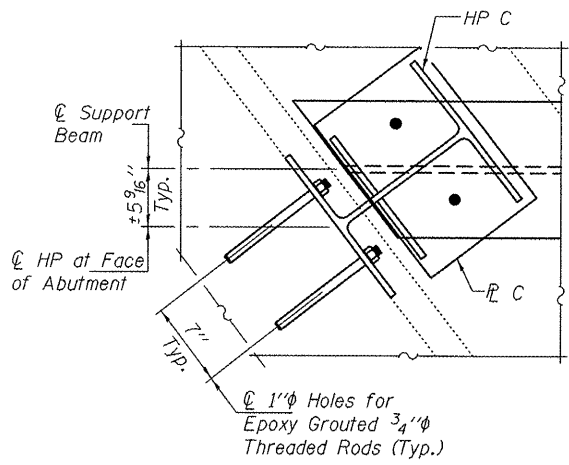
Span 4, Beams 5, 6 & 7 at West Abutment

SECTION G-G

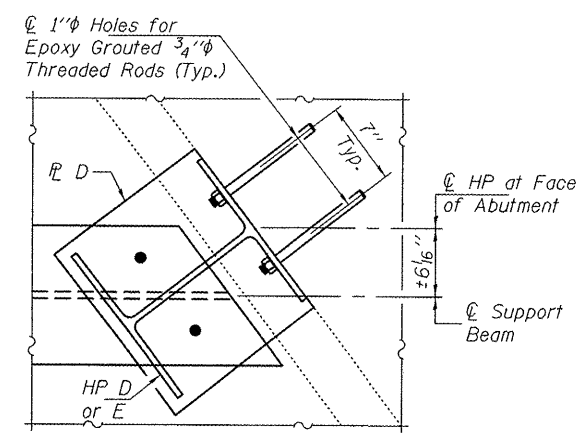
Span 4, Beam 2 at Pier 3

SECTION H-H

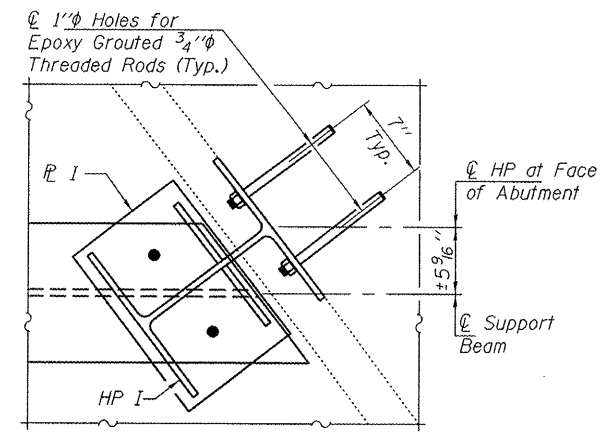
Span 4, Beam 2 at W. Abut.



SECTION I-I



SECTION J-J



SECTION K-K

DESIGNED - VP
CHECKED - MKC
DRAWN - Kyle M. Steffen
CHECKED - VP MKC

EXAMINED
PASSED
ACTING ENGINEER OF STRUCTURAL SERVICES
ACTING ENGINEER OF BRIDGES AND STRUCTURES

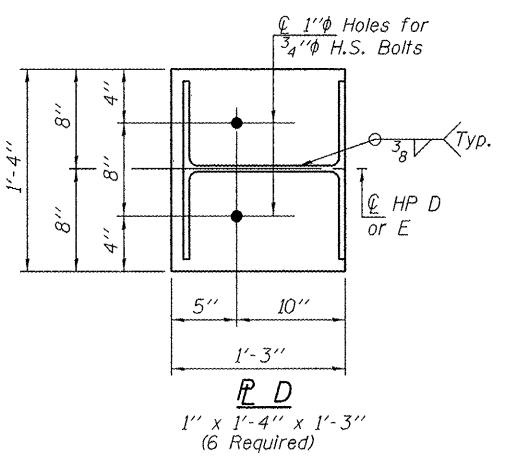
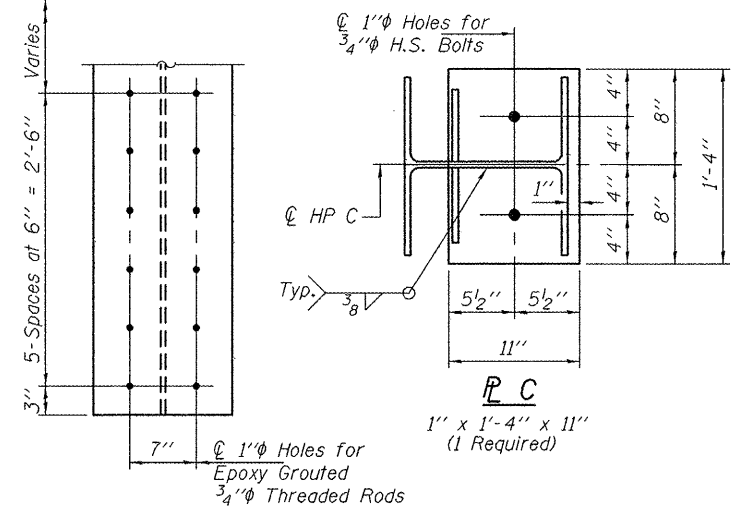
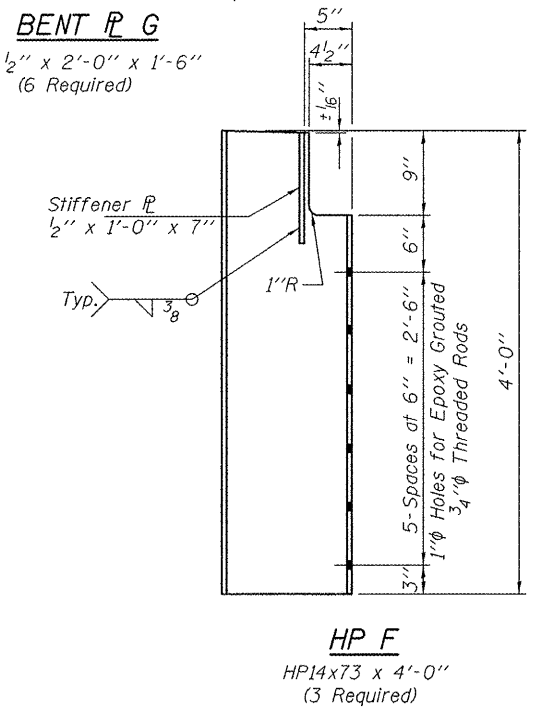
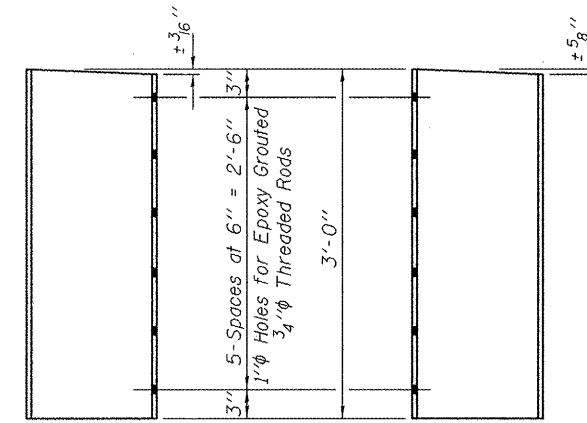
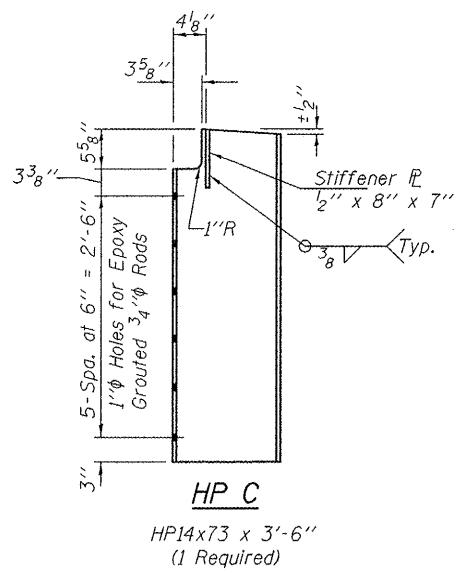
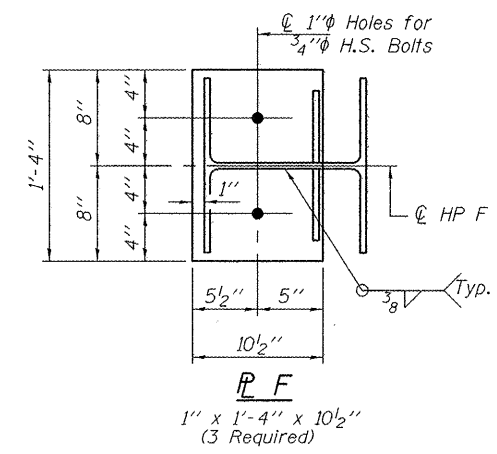
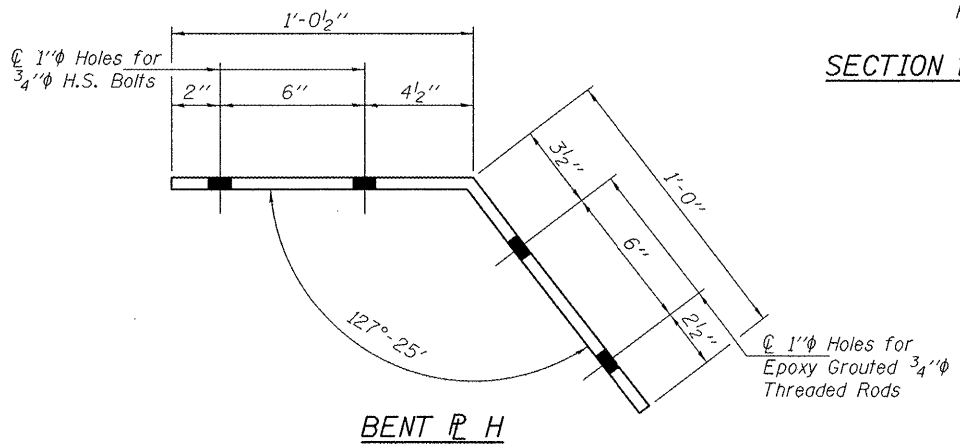
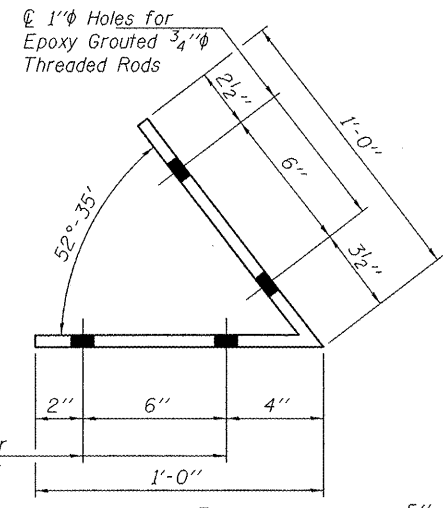
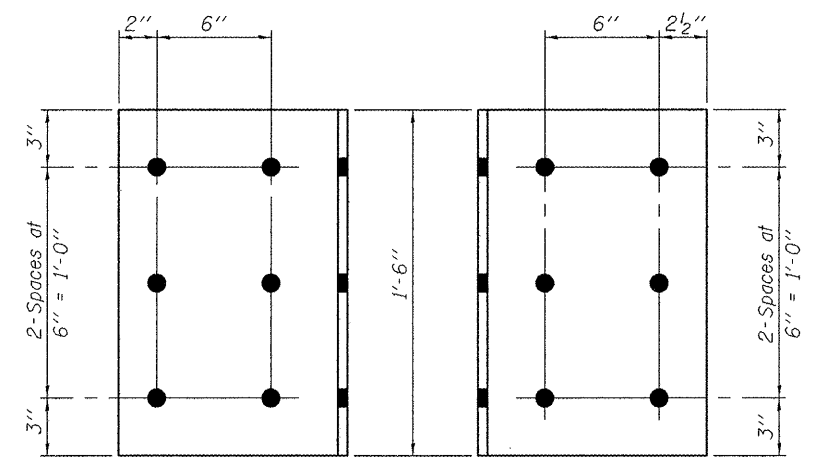
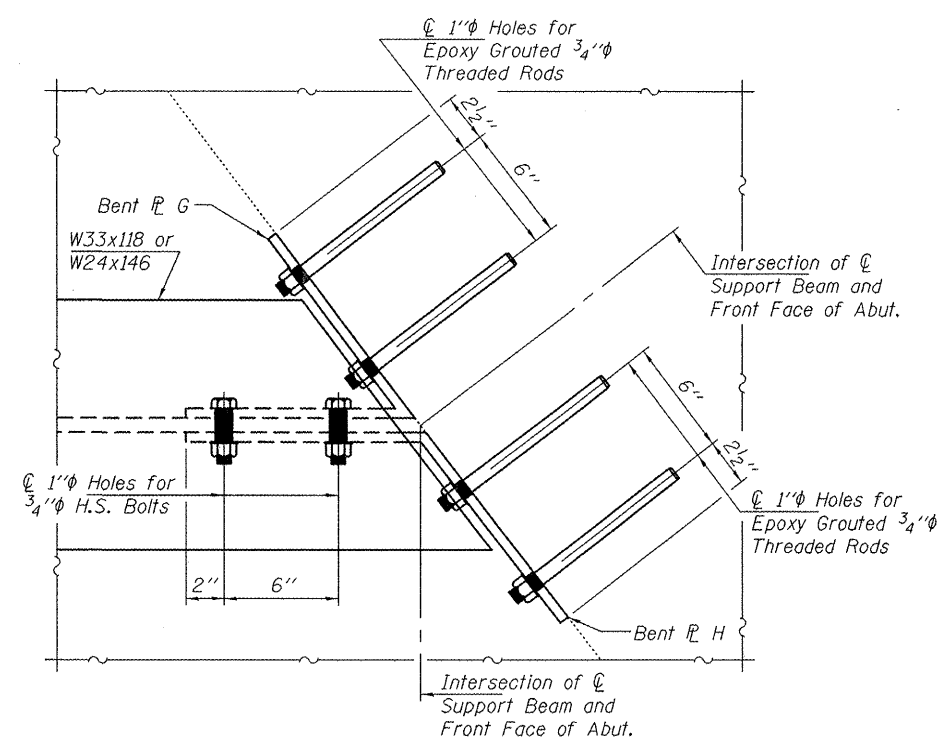
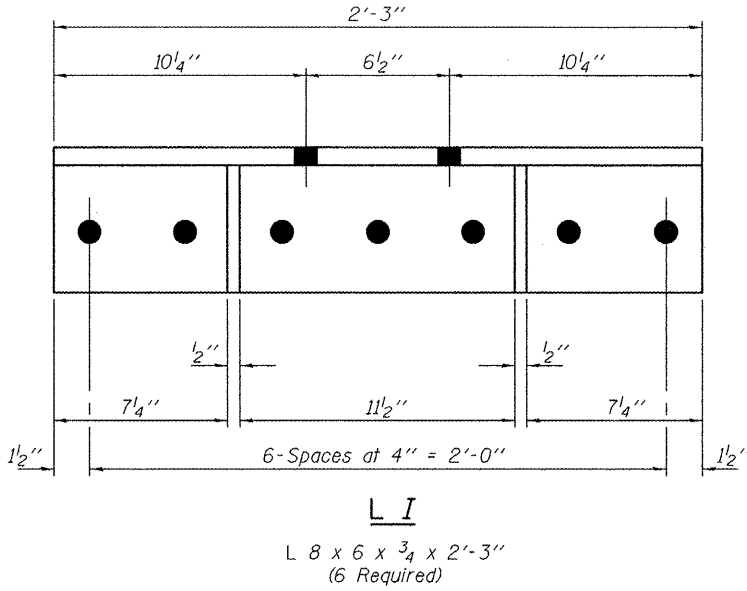
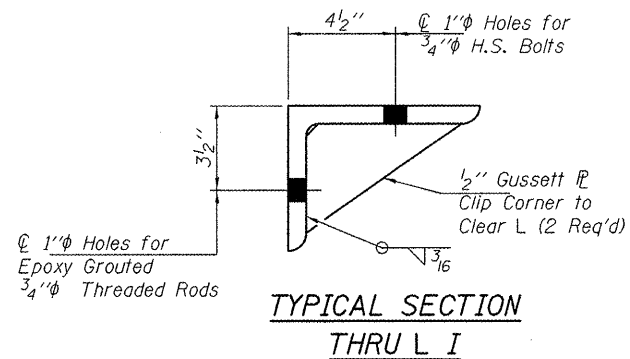
DATE - MAY 2, 2012

STATE OF ILLINOIS
DEPARTMENT OF TRANSPORTATION

REPAIR DETAILS
SN 088-0002

SHEET NO. 2 OF 3 SHEETS

F.A.P. RTE. 643	SECTION (11B)I-1	COUNTY STARK	TOTAL SHEETS 9	SHEET NO. 8
CONTRACT NO. 68B06			ILLINOIS FED. AID PROJECT	



DESIGNED - VP	EXAMINED	DATE - MAY 2, 2012	STATE OF ILLINOIS DEPARTMENT OF TRANSPORTATION	REPAIR DETAILS SN 088-0002	F.A.P. RTE.	SECTION	COUNTY	TOTAL SHEETS	SHEET NO.
CHECKED - MKC	PASSED				643	(11B)I-1	STARK	9	9
DRAWN - Kyle M. Steffen					CONTRACT NO. 68B06				
CHECKED - VP MKC					ILLINOIS FED. AID PROJECT				