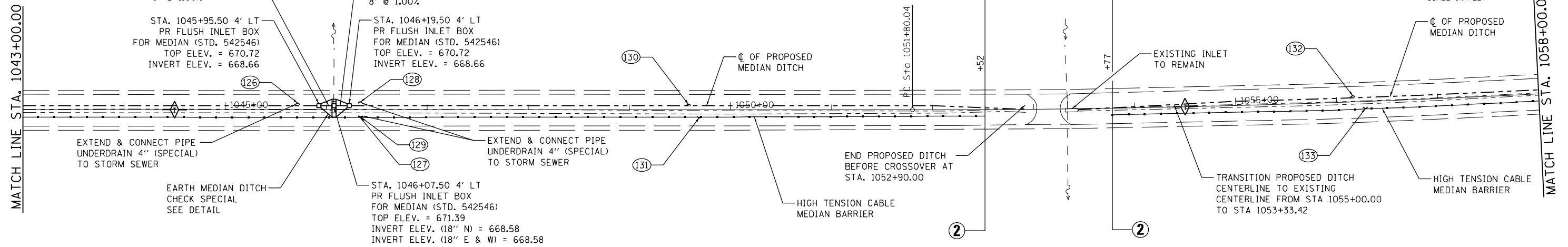




STA. 1053+33.42
 EXISTING MEDIAN INLET BOX
 EXISTING 24" PIPE LT
 USFL 63' LT. = 669.63
 DSFL 1' RT. = 669.07
 EXISTING 24" PIPE RT
 USFL 3' RT. = 669.10
 DSFL 63' RT. = 669.11

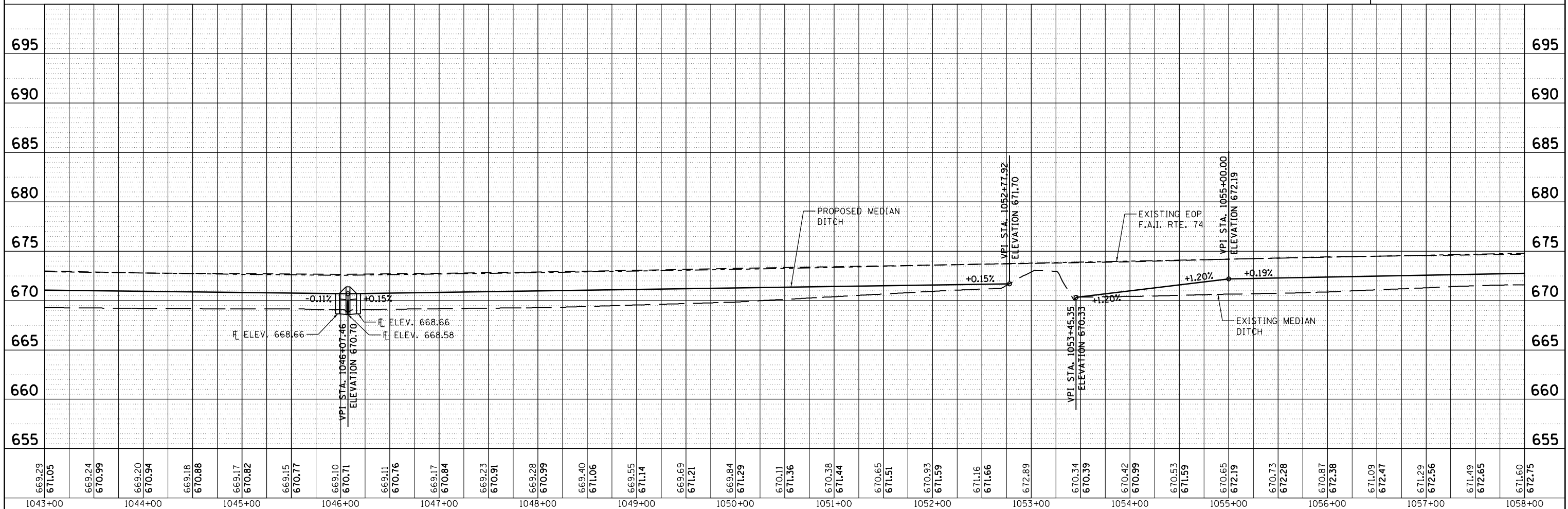
STA. 1046+07.50
 EXISTING MEDIAN INLET BOX
 EXISTING 18" PIPE LT
 USFL 7' LT. = 668.58
 DSFL 61' LT. = 668.47



MEDIAN INLET BOX REMOVAL
 STATION 1046+07.50 - 1 EACH
 (SEE SCHEDULE)

⊕ INDICATES PIPE UNDERDRAINS, 4" (SPECIAL)
 SEE SCHEDULE

McDonough-Whitlow, P.C.
 Consulting Engineers & Land Surveyors
 138 East Wood Street
 Hillsboro, IL 62049
 Phone: 217.532.9233
 Fax: 217.532.6300
 PROFESSIONAL DESIGN NO. 184-002754



669.29 671.05	669.24 670.99	669.20 670.94	669.18 670.88	669.17 670.82	669.15 670.77	669.10 670.71	669.11 670.76	669.17 670.84	669.23 670.91	669.28 670.99	669.40 671.06	669.55 671.14	669.69 671.21	669.84 671.29	670.11 671.36	670.38 671.44	670.65 671.51	670.93 671.59	671.16 671.66	672.89	670.34 670.39	670.42 670.99	670.53 671.59	670.65 672.19	670.73 672.28	670.87 672.38	671.09 672.47	671.29 672.56	671.49 672.65	671.60 672.75	695			
1043+00	1044+00	1045+00	1046+00	1047+00	1048+00	1049+00	1050+00	1051+00	1052+00	1053+00	1054+00	1055+00	1056+00	1057+00	1058+00																			

DATE	BY
DATE	BY
DATE	BY
DATE	BY
DATE	BY

DATE	BY
DATE	BY
DATE	BY
DATE	BY
DATE	BY

STATE OF ILLINOIS
DEPARTMENT OF TRANSPORTATION

PLAN & PROFILE
F.A.I. 74

F.A.I. RTE. 74	SECTION	COUNTY	TOTAL SHEETS	SHEET NO.
	MEDIAN CABLE 2012-1		130	32
CONTRACT NO. 70966			ILLINOIS FED. AID PROJECT	

SCALE: 1"=50' SHEET NO. 20 OF 27 SHEETS STA. 1043+00.00 TO STA. 1058+00.00