

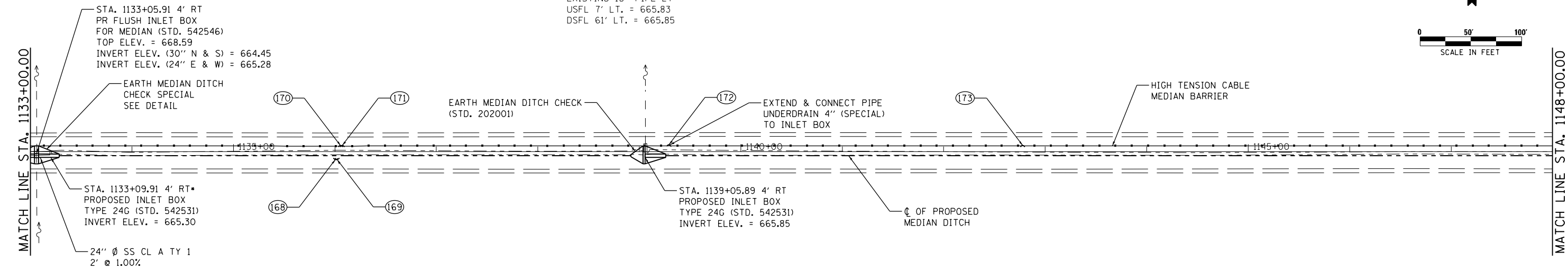
STA. 1133+05.91  
 EXISTING MEDIAN INLET BOX  
 EXISTING 30" PIPE LT  
 USFL 1' RT. = 664.45  
 DSFL 61' LT. = 664.46  
 EXISTING 30" PIPE RT  
 USFL 63' RT. = 664.65  
 DSFL 2' RT. = 664.45

SEC. 11, T19N, R14W, 2ND P.M.



0 50' 100'  
 SCALE IN FEET

DATE	
BY	
PLAN	
NO.	
DATE	
BY	
PROFILE	
NO.	



MEDIAN INLET BOX REMOVAL  
 STATION 1133+05.91 - 1 EACH  
 (SEE SCHEDULE)

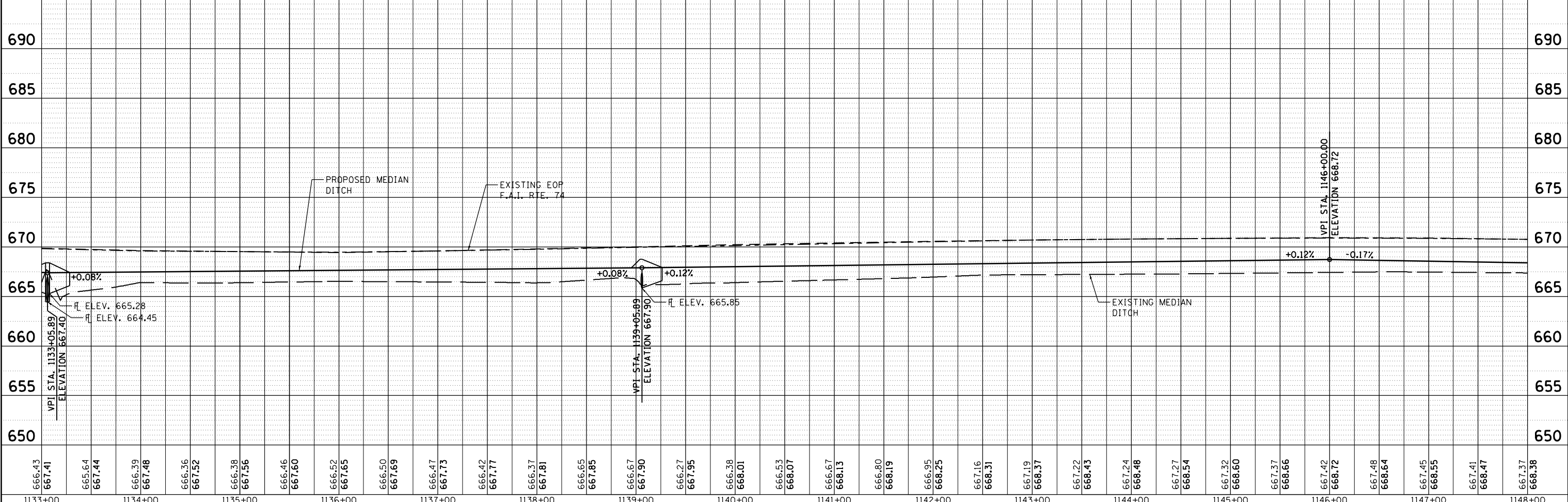
• SAW CUT OR GRIND 0.5" OFF OF 30"  
 PIPE ENDS TO FIT INTO PR FLUSH  
 INLET BOX

MEDIAN INLET BOX REMOVAL  
 STATION 1139+05.89 - 1 EACH  
 (SEE SCHEDULE)

⊕ INDICATES PIPE UNDERDRAINS, 4" (SPECIAL)  
 SEE SCHEDULE

**McDonough-Whitlow, P.C.**  
 Consulting Engineers & Land Surveyors  
 138 East Wood Street  
 Hillsboro, IL 62049  
 Phone: 217.532.9233  
 Fax: 217.532.6300  
 PROFESSIONAL DESIGN NO. 184-002754

DATE	
BY	
PROFILE	
NO.	
DATE	
BY	
PLAN	
NO.	



666.43	667.41	665.64	667.44	666.39	667.48	666.36	667.52	666.38	667.56	666.46	667.60	666.52	667.65	666.50	667.69	666.47	667.73	666.42	667.77	666.37	667.81	666.65	667.85	666.67	667.90	666.27	667.95	666.38	668.01	666.53	668.07	666.67	668.13	666.80	668.19	666.95	668.25	667.16	668.31	667.19	668.37	667.22	668.43	667.24	668.48	667.27	668.54	667.32	668.60	667.37	668.66	667.42	668.72	667.48	668.64	667.45	668.55	667.41	668.47	667.37	668.38
1133+00	1134+00	1135+00	1136+00	1137+00	1138+00	1139+00	1140+00	1141+00	1142+00	1143+00	1144+00	1145+00	1146+00	1147+00	1148+00																																														

STATE OF ILLINOIS  
 DEPARTMENT OF TRANSPORTATION

PLAN & PROFILE  
 F.A.I. 74

SCALE: 1"=50' SHEET NO. 26 OF 27 SHEETS STA. 1133+00.00 TO STA. 1148+00.00

F.A.I. RTE. 74	SECTION MEDIAN CABLE 2012-1	COUNTY	TOTAL SHEETS 130	SHEET NO. 38
CONTRACT NO. 70966				ILLINOIS FED. AID PROJECT

•CHAMPAIGN & VERMILION