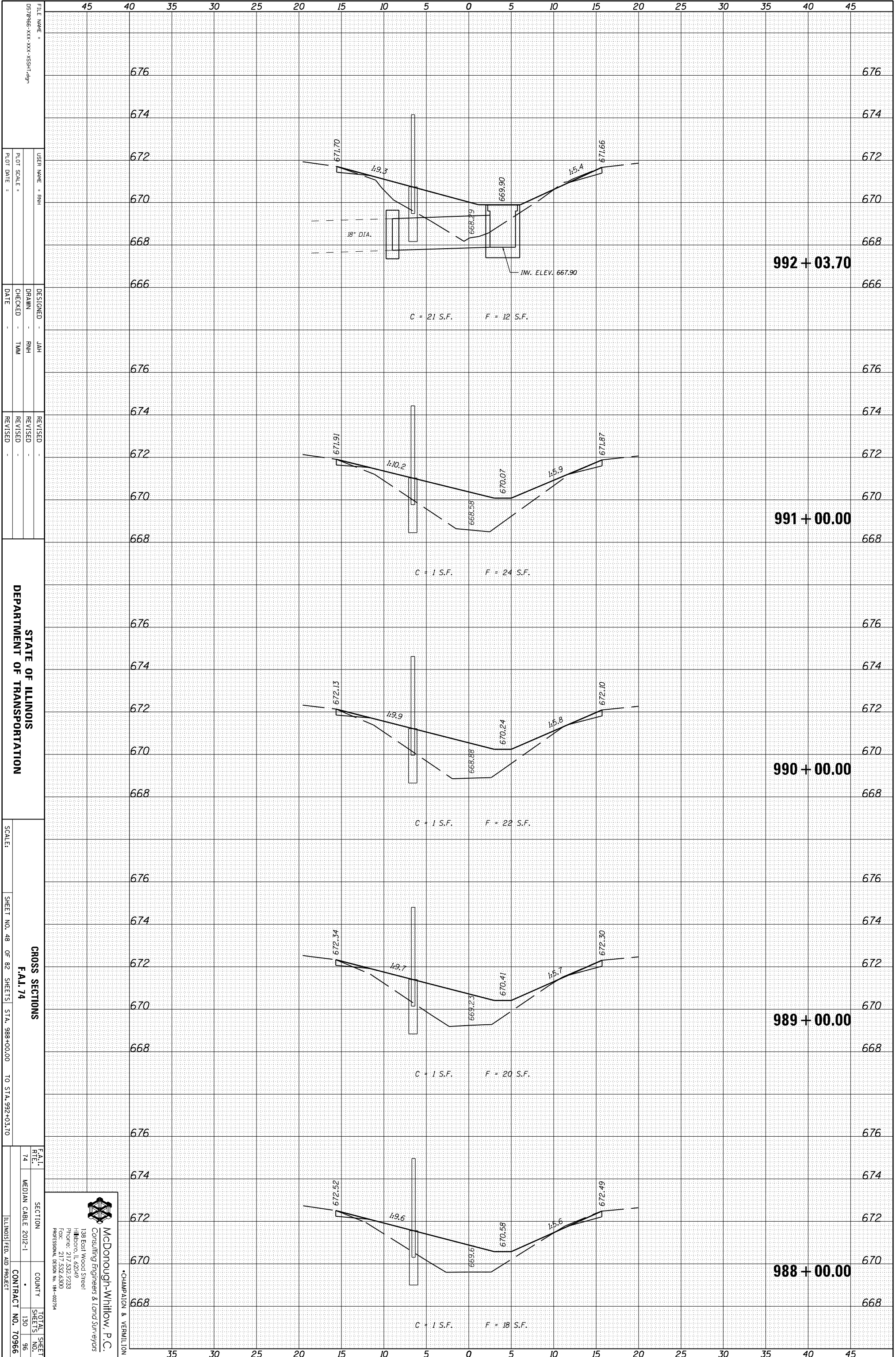


ORIGINAL SURVEY	SURVEYED	BY	DATE
NOTE BOOK	PLOTTED		
	TEMPLATE		
	AREAS		
	CHECKED		

FINAL SURVEY	SURVEYED	BY	DATE
NOTE BOOK	PLOTTED		
	TEMPLATE		
	AREAS		
	CHECKED		



992 + 03.70

991 + 00.00

990 + 00.00

989 + 00.00

988 + 00.00

C = 21 S.F. F = 12 S.F.

C = 1 S.F. F = 24 S.F.

C = 1 S.F. F = 22 S.F.

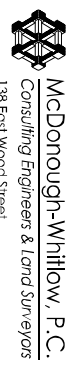
C = 1 S.F. F = 20 S.F.

C = 1 S.F. F = 18 S.F.

18" DIA.

INW. ELEV. 667.90

FILE NAME = 0570966-XXX-XXX-XXX-SSHT-09
 USER NAME = RHM
 DESIGNER = JAH
 DRAWN = RHM
 CHECKED = TMM
 DATE =
 REVISED =
 REVISED =
 REVISED =
 REVISED =
 REVISED =
 SCALE: SHEET NO. 48 OF 82 SHEETS STA. 988+00.00 TO STA. 992+03.70
 CROSS SECTIONS
 F.A.I. 74
 SECTION MEDIAN CABLE 2012-1
 COUNTY TOTAL SHEETS NO. 130 SHEETS NO. 96
 CONTRACT NO. 70966
 ILLINOIS FED. AID PROJECT



McDonough-Whitlow P.C.
 Consulting Engineers & Land Surveyors
 138 East Wood Street
 Hickory, IL 62549
 Phone: 217.532.7233
 Fax: 217.532.6300
 PROFESSIONAL DESIGN NO. 194-00734

CHAMPAIGN & VERNILION