

F.A.I. RTE.	SECTION	COUNTY	TOTAL SHEETS	SHEET NO.
39	D5 PATCHING 2013-1	MCLEAN	19	1
		ILLINOIS	CONTRACT NO. 70973	

STATE OF ILLINOIS
DEPARTMENT OF TRANSPORTATION
DIVISION OF HIGHWAYS

PROPOSED HIGHWAY PLANS

F.A.I. ROUTE 39 (I-39)
SECTION D5 PATCHING 2013-1

PAVEMENT PATCHING
MCLEAN COUNTY

C-95-011-12
PATCHING FROM I-55 TO WOODFORD COUNTY LINE

D-95-011-12



LOCATION OF SECTION INDICATED THUS: —

FOR INDEX OF SHEETS, SEE SHEET NO. 2
FOR SUMMARY OF QUANTITIES, SEE SHEET NO. 3 & 4

CURRENT TRAFFIC DATA

	LEG "A"	LEG "B"	LEG "C"	LEG "D"	LEG "E"
2011 ADT	11,700	14,800	19,900	18,800	17,200
P.U. %	52.1	61.5	69.9	67.9	66.4
S.U. %	6.0	5.1	4.0	4.2	4.0
M.U. %	41.9	33.4	26.1	27.9	29.6

LEG "A" IS FROM I-55 TO THE I-39 SB TO I-55 EB RAMP IN NORMAL.
LEG "B" IS FROM THE I-39 SB RAMP IN NORMAL TO US 51 BUS.
LEG "C" IS FROM US 51 BUS TO FAS 472.
LEG "D" IS FROM FAS 472 TO IL 251.
LEG "E" IS FROM IL 251 TO THE WOODFORD COUNTY LINE.

DESIGN DESIGNATION
N/A

PROJECT ENDS
STATION 557+87.88

STATION EQUATION
STA 377+24.54 (BK) =
STA 377+00.00 (AH)

BRIDGE OMISSION
SN 057-0208 (SB): 303+74.53 - 305+83.48
SN 057-0209 (NB): 303+45.48 - 305+55.74

BRIDGE OMISSION
SN 057-0210 (NB): 291+42.55 - 292+72.66
SN 057-0211 (SB): 291+87.21 - 293+18.07

PROJECT BEGINS
STATION 41+92 I-39 NB
STATION 77+32 I-39 SB
STATION 30+00 RAMP A
STATION 10+00 RAMP B

BRIDGE OMISSION
SN 057-0203: 550+10.62 - 556+40.88

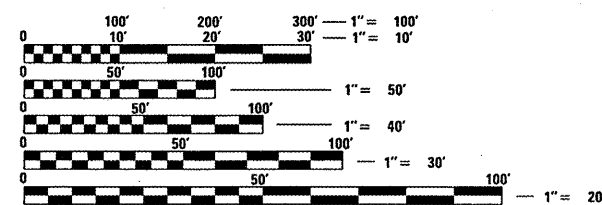
BRIDGE OMISSION
SN 057-0205 (NB): 341+60.22 - 345+25.49
SN 057-0206 (SB): 341+40.88 - 345+13.37



STA. 198+61.67 RURAL
URBAN

BRIDGE OMISSION
SN 057-0216 (SB): 123+22.18 - 126+75.71
SN 057-0217 (NB): 123+24.61 - 126+77.61

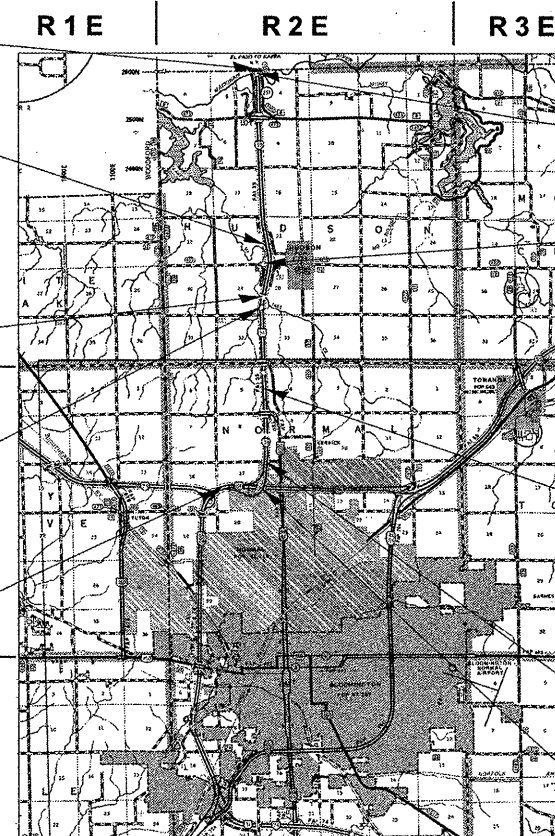
BRIDGE OMISSION
SN 057-0215 (NB): 95+12.24 - 99+85.95



FULL SIZE PLANS HAVE BEEN PREPARED USING STANDARD ENGINEERING SCALES. REDUCED SIZED PLANS WILL NOT CONFORM TO STANDARD SCALES. IN MAKING MEASUREMENTS ON REDUCED PLANS, THE ABOVE SCALES MAY BE USED.

J.U.L.I.E.
JOINT UTILITY LOCATION INFORMATION FOR EXCAVATION
1-800-892-0123 (HUDSON & NORMAL TOWNSHIPS)
OR 811

PROJECT ENGINEER: NANCY FASIG
SQUAD LEADER: BRIAN J. HOGAN
DESIGNER: ANDREW BERGAN
(217) 465-4181
CONTRACT NO. 70973



SCALE
0 5000 10000 15000 20000 25000 FEET
GROSS LENGTH = 51,620.42 FEET = 9.777 MILES
NET LENGTH = 49,457.81 FEET = 9.367 MILES

STATE OF ILLINOIS
DEPARTMENT OF TRANSPORTATION
DIVISION OF HIGHWAYS
SUBMITTED 03/23 20 12
Joseph F. Casare (CAG)
DEPUTY DIRECTOR OF HIGHWAYS, REGION ENGINEER
May 11 20 12
John D. Baumgardner
ENGINEER OF DESIGN AND ENVIRONMENT
May 11 20 12
William R. Freiler
DIRECTOR OF HIGHWAYS, CHIEF ENGINEER

PRINTED BY THE AUTHORITY
OF THE STATE OF ILLINOIS