

F.A. RTE.	SECTION	COUNTY	TOTAL SHEETS	SHEET NO.
75	84-12; 11-3	•	729	335
STA. 1624+00		TO STA. 1640+00		
FED. ROAD DIST. NO.		ILLINOIS FED. AID PROJECT		
• SANGAMON AND CHRISTIAN				

PARCEL NO. 6041337 A, B, C, D, PE-1 & PE-2
 ROBERT BROCKELSBY, LEE BROCKELSBY AND
 M. TERESA BROCKELSBY AS TRUSTEE UNDER
 PARAGRAPH 2.03 OF THE WILL OF DANIEL R. BROCKELSBY
 DECEASED EACH AS TO AN UNDIVIDED 1/3 INTEREST

SEE SHEET NO. 21 FOR TABULATIONS

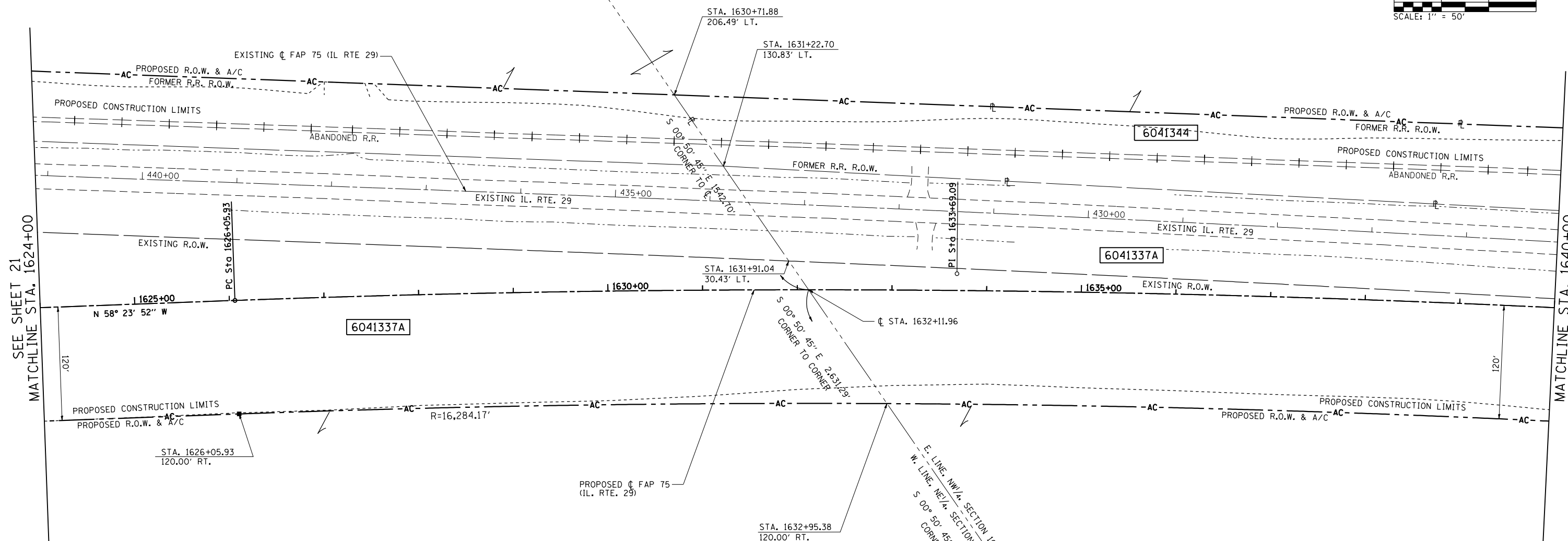
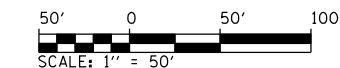
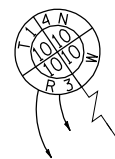
REMAINING AREA THIS SIDE
 66.336 AC ±

NW 1/4 SECTION 10, T.14N., R.3W., 3RD P.M.

PARCEL NO. 6041344
 SPRINGFIELD MARINE BANK AS TRUSTEE
 UNDER TRUST AGREEMENT DATED MARCH 23, 1979
 KNOWN AS TRUST NO. 53-1025-5

TOTAL AREA = 3.275 ACRES ±
 FORMER R.R. R.O.W. = 3.275 ACRES ±
 TOTAL AREA REQUIRED = 3.275 ACRES ±
 TOTAL REMAINING = 0.000 ACRES ±

IRON PIPE (FOUND)
 SW CORNER, NE 1/4, SEC. 10
 T14N, R3W, 3RD P.M.



SEE SHEET 21
 MATCHLINE STA. 1624+00

MATCHLINE STA. 1640+00

PARCEL NO. 6041337 A, B, C, D, PE-1 & PE-2
 ROBERT BROCKELSBY, LEE BROCKELSBY AND
 M. TERESA BROCKELSBY AS TRUSTEE UNDER
 PARAGRAPH 2.03 OF THE WILL OF DANIEL R. BROCKELSBY
 DECEASED EACH AS TO AN UNDIVIDED 1/3 INTEREST

SEE SHEET NO. 21 FOR TABULATIONS

REMAINING AREA THIS SIDE
 183.460 AC ±

NE 1/4 SECTION 10, T.14N., R.3W., 3RD P.M.

NW 1/4 SECTION 10, T.14N., R.3W., 3RD P.M.

NOTES:
 BEARINGS ARE BASED ON THE ILLINOIS STATE PLANE
 COORDINATE SYSTEM NAD 83 (1986) WEST ZONE.
 PLAN DISTANCES AND STATIONING ARE IN GRID ENGLISH.
 TO CONVERT TO GROUND DIVIDE BY GRID FACTOR,
 CONVERSION FACTOR = 0.99996337

PROP. IL. RTE 29 CURVE-3 DATA
 PI STA. = 1633+69.09
 Δ = 5° 19' 38" (RT)
 D = 0° 20' 57"
 R = 16,404.17'
 T = 763.16'
 L = 1,525.21'
 E = 17.74'
 P.C. STA. = 1626+05.93
 P.R.C. STA. = 1641+31.14

STONE (FOUND)
 NE CORNER, NW 1/4, SECTION 10
 T14N, R3W, 3RD P.M.
 STA. 1638+64.91, 884.15' RT.



CMT
 CRAWFORD, MURPHY & TILLY, INC.
 CONSULTING ENGINEERS
 License No. 184-000613

REVISION		RIGHT OF WAY PLANS
DATE	DESCRIPTION	
		ROUTE: FAP 75 (IL ROUTE 29)
		SECTION: 84-11(11B), 11-2(2B,B-1)
		COUNTY: CHRISTIAN
		JOB NO.: R-96-004-01
		STA. 1624+00 TO STA. 1640+00
		SCALE: 1" = 50'

L:\DOT\0306601\draw\sheets\0672829-sht-R0WPLN_023.dgn
 3/16/2012