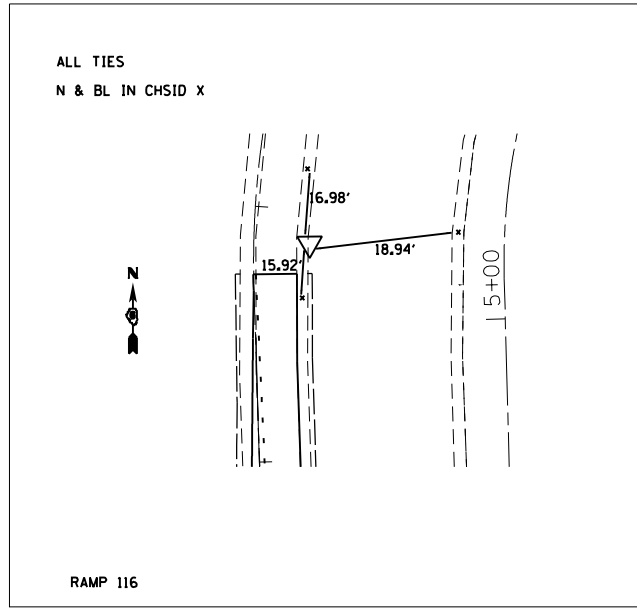
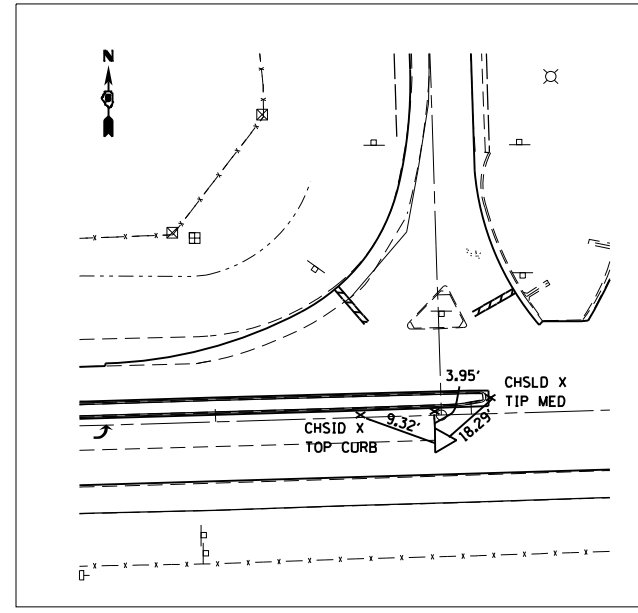


BM TM69 : SET A CHSLD " " IN W END OF SOUTH HEADWALL OF A 2' X 1.5' BOX @ 2.39 MILE WEST OF PAWNEE RD, NAVD 88 = 608.51'
 BM TM71 : SET A CHSLD " " IN SE BOLT OF INTERSTATE LIGHT IN BETWEEN OFF AND ON RAMP TO I55 @ 2.85 MILE WEST OF PAWNEE RD, NAVD 88 = 611.53'
 BM JJ70(A) : SET A CHSLD " " IN SE CORNER OF CONCRETE WATER METER MAIN FOUND AT FE +/- 2.65 MILE WEST OF PAWNEE RD AND IL-104 INTERSECTION, STA. 122+17.9, OFF 22.9 LT, NAVD 88 = 610.42'
 CB*1 : E SIDE CONCRETE MEDIAN / STOP SIGN BASE AT INTERSECTION OF IL-104 AND I-55 EXIT RAMP, +/- STA. 93+00, NAVD 88 = 611.56'
 CB*2 : CHISELED " " @ WEST END CONCRETE MEDIAN WEST OF IP*24, +/- STA. 85+10, NAVD 88 = 612.16'
 CB*3 : CHISELED " " @ SE CORNER OF CONCRETE BASE MOBIL GAS SIGN NORTH OF IP *112, +/- STA. 81+20, NAVD 88 = 608.92'
 CB*4 : CHISELED " " IN CONCRETE BASE OF BEEHIVE INLET 27.20" N OF CONCRETE NAIL, +/- STA. 75+60, 11.80' N OF EOP, 111' E OF CL RR @ EOP, NAVD 88 = 611.32'

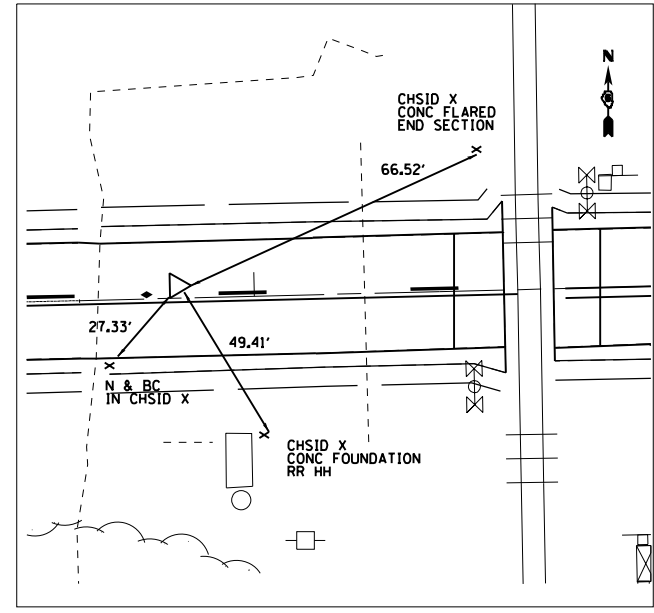
BM TM72 : SET A CHSLD " " IN TOP CENTER OF 24" RCCP DROP INLET BOX @ NE SIDE OF WEST ON RAMP OF I55 @ 3.13 MILE WEST OF PAWNEE RD, 88 ELEV = 610.275 @ STA 94+15; 49.0LT
 BM TM73: SET A CHSLD " " ON EAST SIDE OF LIGHT POLE CONC. FOUNDATION, SET JUST EAST OF SUBWAY & TC BY BUILDING ALONG FRONTAGE ROAD @ 0.03 MILE N OF IL 104 & FRONTAGE RD, 88 ELEV = 610.286
 BM TM74: SET A "600" SPIKE NAIL IN P.P. SET ON S.E. SIDE OF FRONTAGE ROAD SET JUST SOUTH OF LISA'S ANTIQUE MALL @ 0.28 MILE NORTH OF IL 104 & FRONTAGE RD JCT, 88 ELEV = 599.611
 BM TM75: SET A "600" SPIKE NAIL IN P.P. SET ON WEST SIDE OF FRONTAGE ROAD @ 0.70 MILE NORTH OF IL 104 & FRONTAGE RD, JCT, 88 ELEV = 596.350



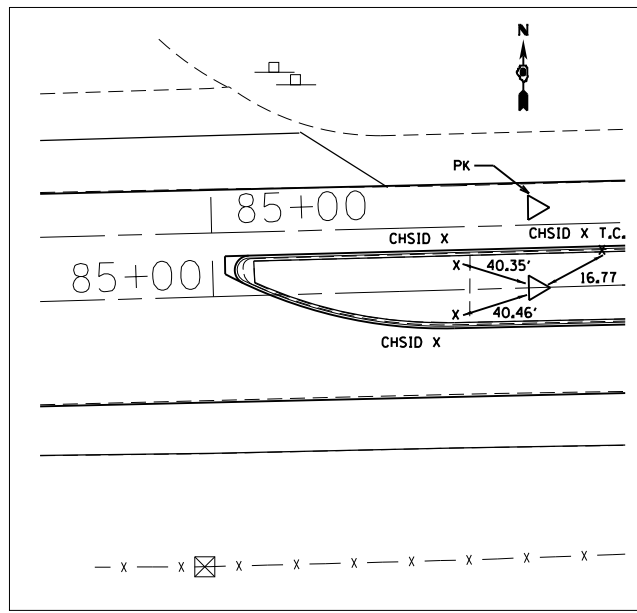
PT 21+32.898 (PK IN CHSLD X)



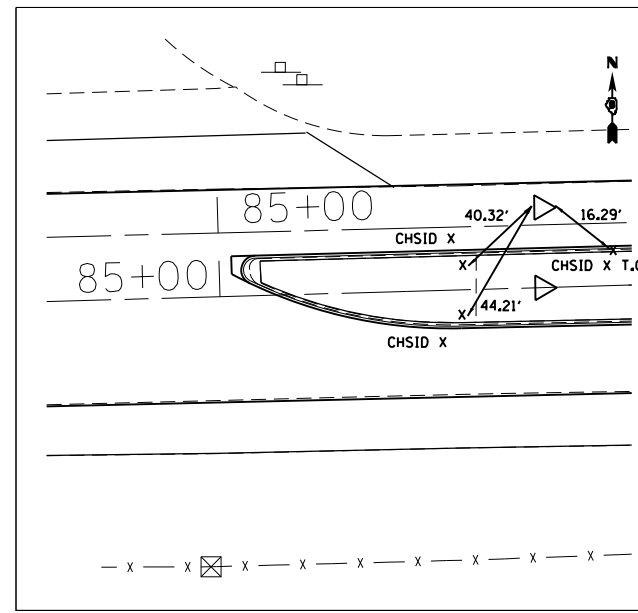
POT 26+46.95 (PK IN CHSID X)



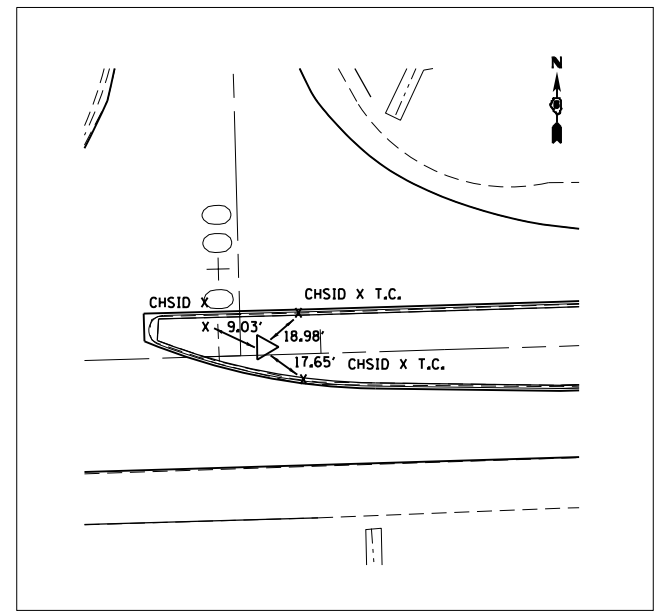
STA EQ 71+63.54 AH: 746+90.47 (PK NAIL IN CHSID X)



POT 85+85.15 (#5 REBAR)



POT 85+85.15 (PK IN CHSID X)



0+00 (#4 REBAR W/ FLUSH) (R117)
 STA 93+83.28 IL 104

FILE NAME =	USER NAME = sparksgw	DESIGNED -	REVISED -
c:\pw\work\p1dot\sparksgw\10245433\067	BE12-sh-t-ATB.dgn	DRAWN -	REVISED -
	PLOT SCALE = 40.0000' / in.	CHECKED -	REVISED -
	PLOT DATE = Apr-09-2012 03:33:23PM	DATE -	REVISED -

**STATE OF ILLINOIS
 DEPARTMENT OF TRANSPORTATION**

BENCHMARKS, CROSS TIES	
SCALE:	SHEET 1 OF 2 SHEETS STA. TO STA.

F.A.P. RTE.	SECTION	COUNTY	TOTAL SHEETS	SHEET NO.
753	(140RS-6, 14IRS-7)I	SANGAMON	98	28
CONTRACT NO. 72E12				
ILLINOIS FED. AID PROJECT				