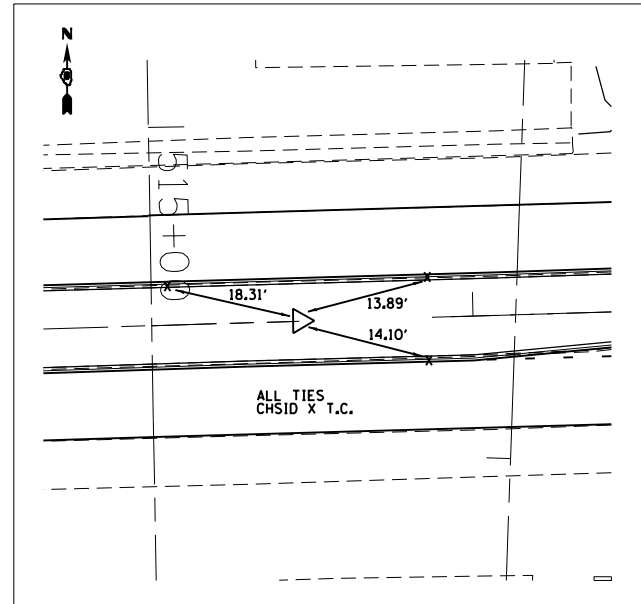
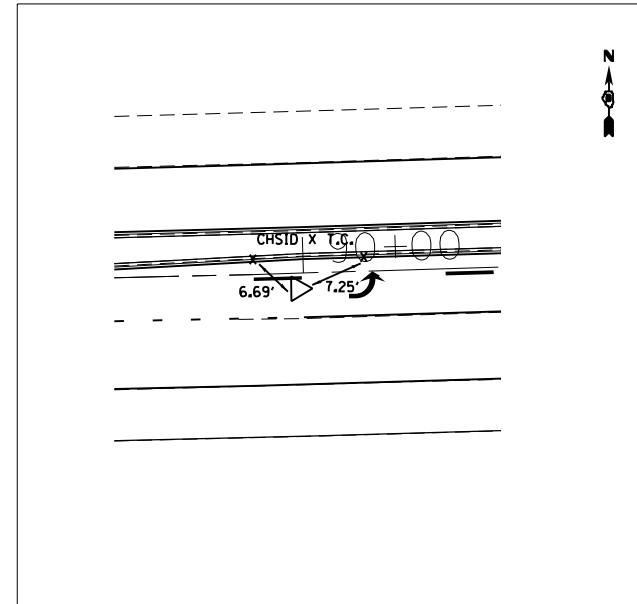


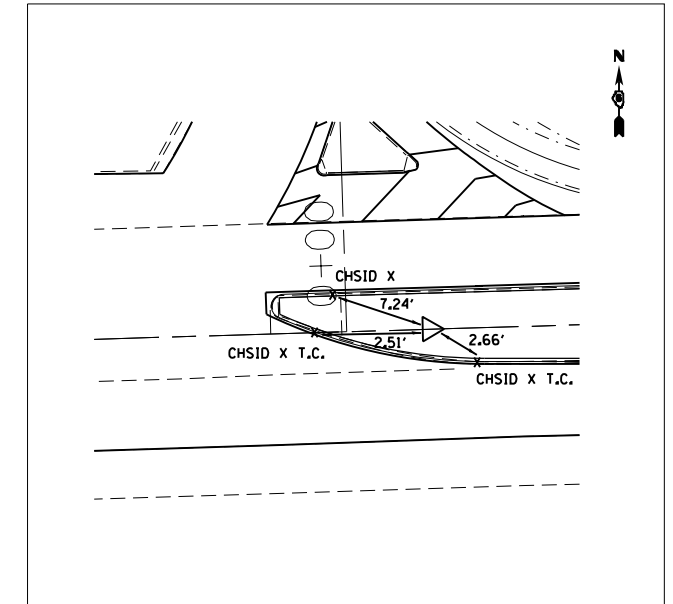
PC 5+15.72 (PK IN CHSID "X")



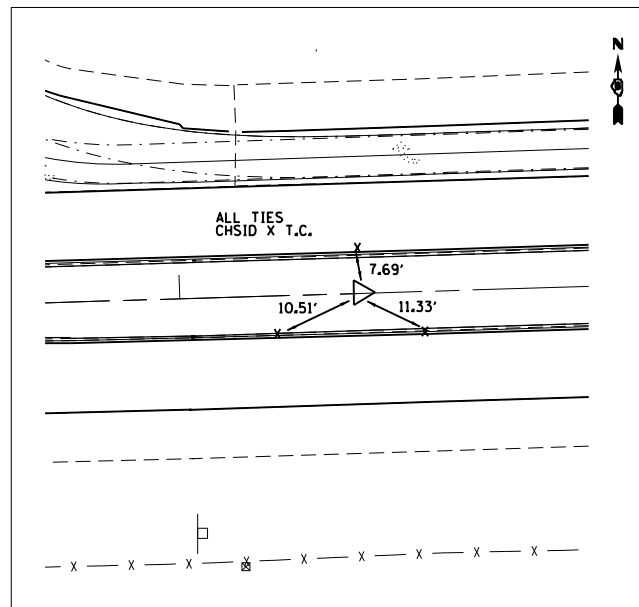
POT 100+33.00 (#4 REBAR W/CAP)



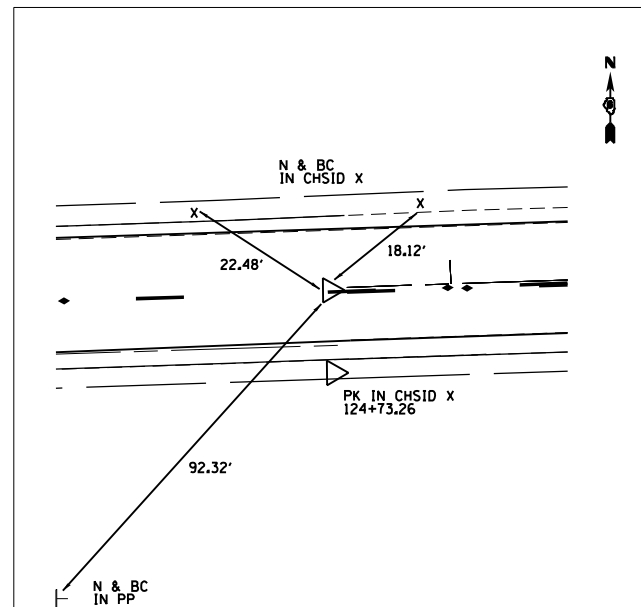
POT 89+89.60 (PK NAIL IN CHSID X)



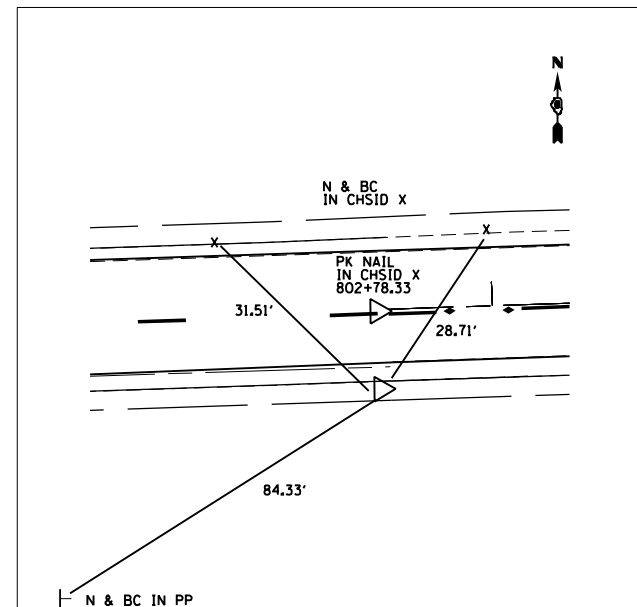
0+00 (#4 REBAR W/CAP) (R119) =
STA 108+15.82 IL 104



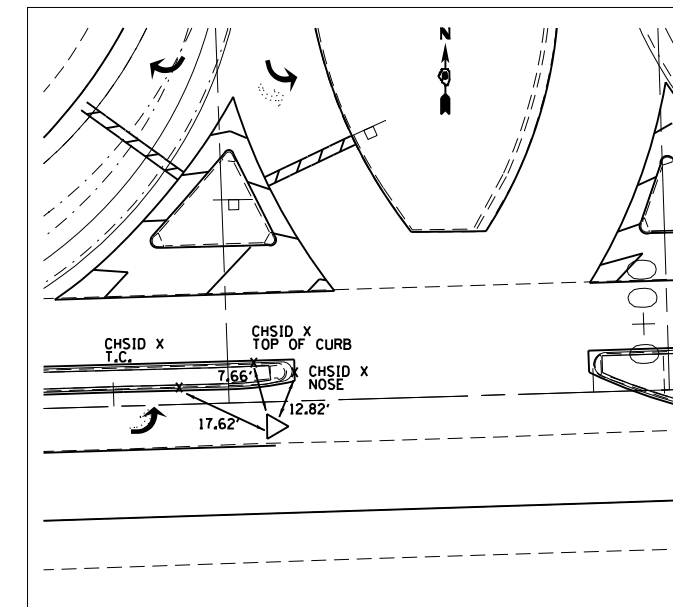
PI 109+37.04 (#4 REBAR W/CAP)



POT 802+78.33 (PK IN CHSID X)



PI 124+73.26 (PK IN CHSID X)



STA 107+24.02 IL 104 (CHAIN E012) =
STA 23+98.07 (PK W/CHSLD "X")

FILE NAME =	USER NAME = sparksgw	DESIGNED -	REVISED -
ct:\pw\work\p\dot\sparksgw\10245433\0672E12-sht-ATB.dgn		DRAWN -	REVISED -
	PLOT SCALE = 40.0000' / in.	CHECKED -	REVISED -
	PLOT DATE = Apr-09-2012 03:33:23PM	DATE -	REVISED -

STATE OF ILLINOIS
DEPARTMENT OF TRANSPORTATION

BENCHMARKS, CROSS TIES

SCALE: SHEET 2 OF 2 SHEETS STA. TO STA.

F.A.P. RTE.	SECTION	COUNTY	TOTAL SHEETS	SHEET NO.
753	(140RS-6, 141RS-7)I	SANGAMON	98	29
CONTRACT NO. 72E12				
ILLINOIS FED. AID PROJECT				