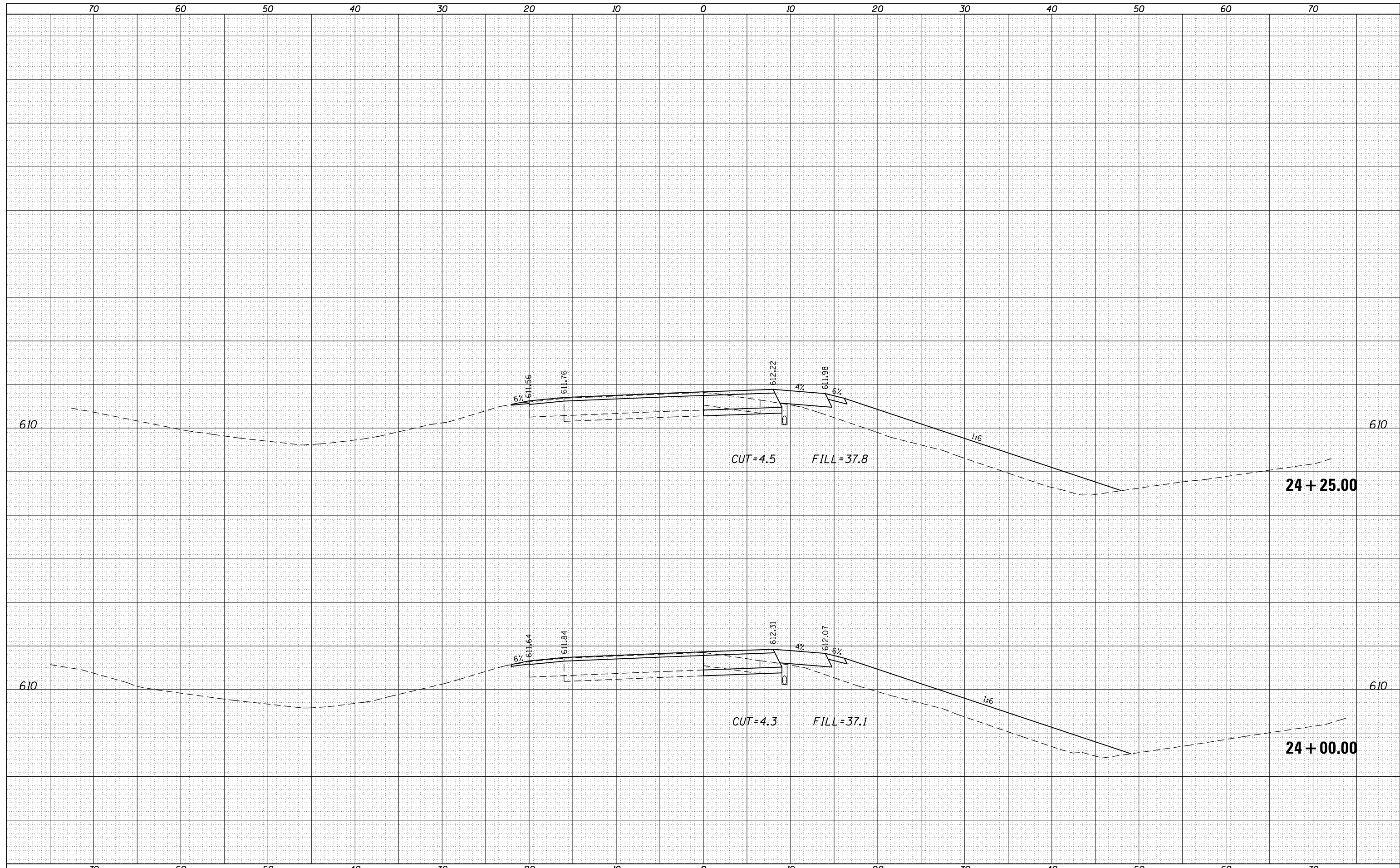


DATE	
BY	
SURVEYED	
PLOTTED	
TEMPLATE	
AREAS	
CHECKED	
FINAL SURVEY	
NOTE BOOK	
NO.	

DATE	
BY	
SURVEYED	
PLOTTED	
TEMPLATE	
AREAS	
CHECKED	
ORIGINAL SURVEY	
NOTE BOOK	
NO.	



FILE NAME =	USER NAME = sparksgw	DESIGNED -	RTS	REVISD -		STATE OF ILLINOIS DEPARTMENT OF TRANSPORTATION	CROSS SECTIONS SOUTHBOUND I-55 EXIT RAMP			F.A.P	SECTION	COUNTY	TOTAL	SHEET
es:\pw\work\p\dot\sparksgw\ad245433\0672E12-sh-xssh12.dgn		DRAWN -	RTS	REVISD -			753	(140RS-6, 141RS-7)I	SANGAMON	98	95			
PLOT SCALE = 10.0000' / in.		CHECKED -		REVISD -			CONTRACT NO. 72E12							
PLOT DATE = Apr-09-2012 03:37:32PM		DATE -		REVISD -			SCALE:	SHEET 7	OF 10 SHEETS	STA. 24+00.00	TO STA. 24+25.00	ILLINOIS FED. AID PROJECT		