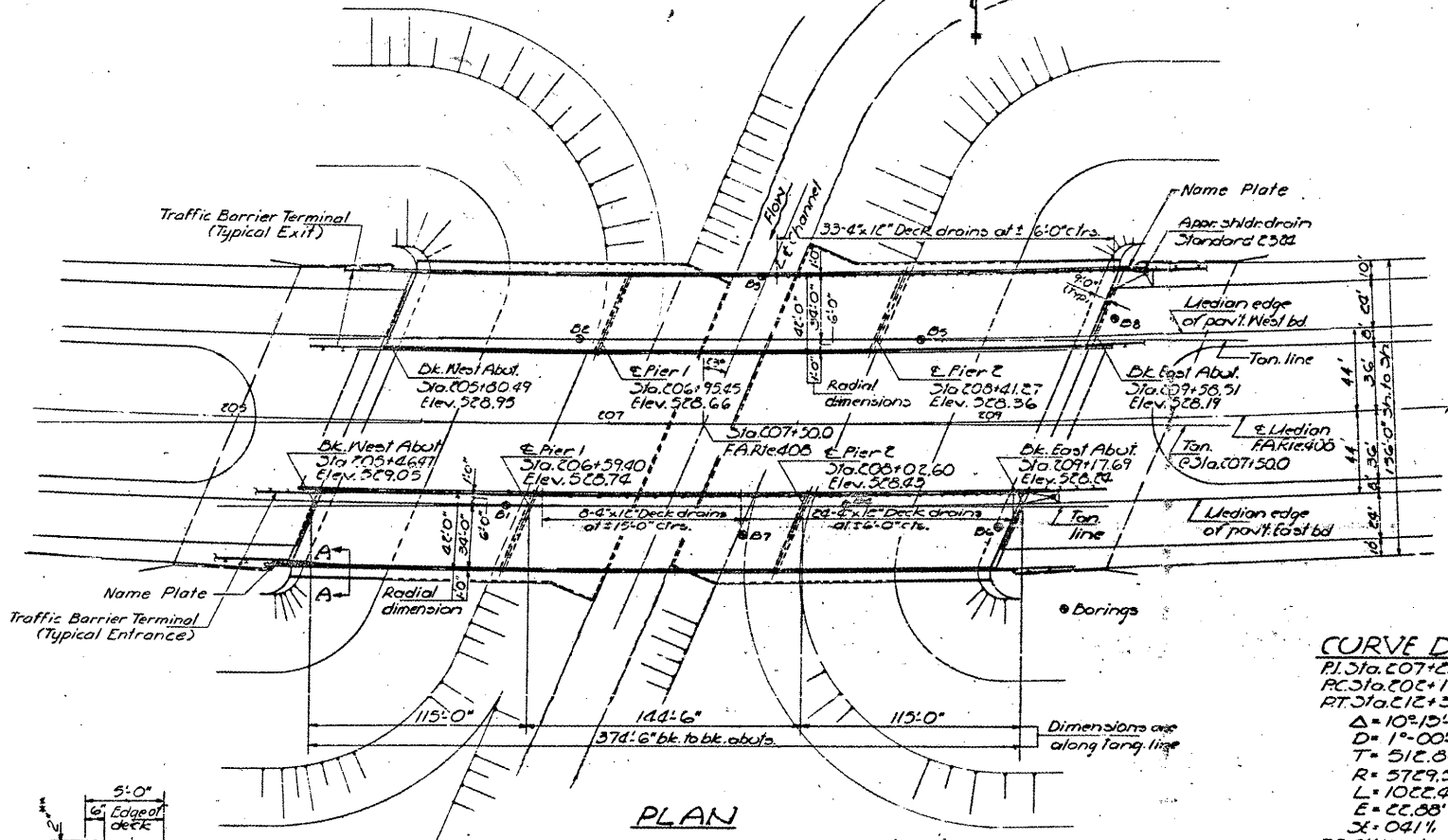
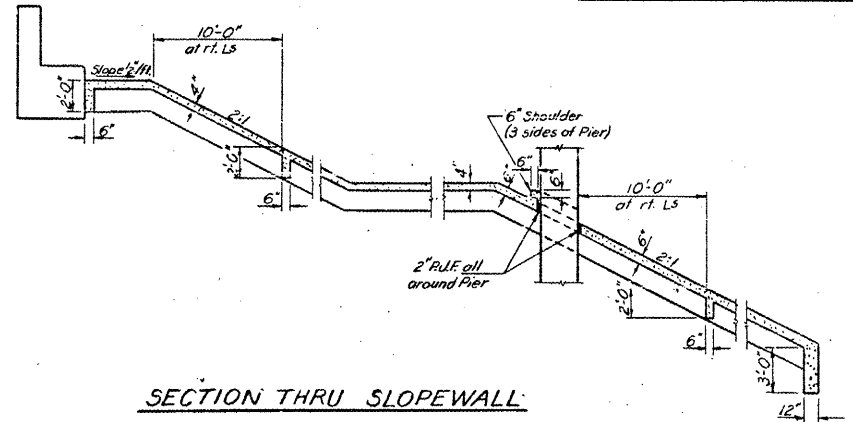
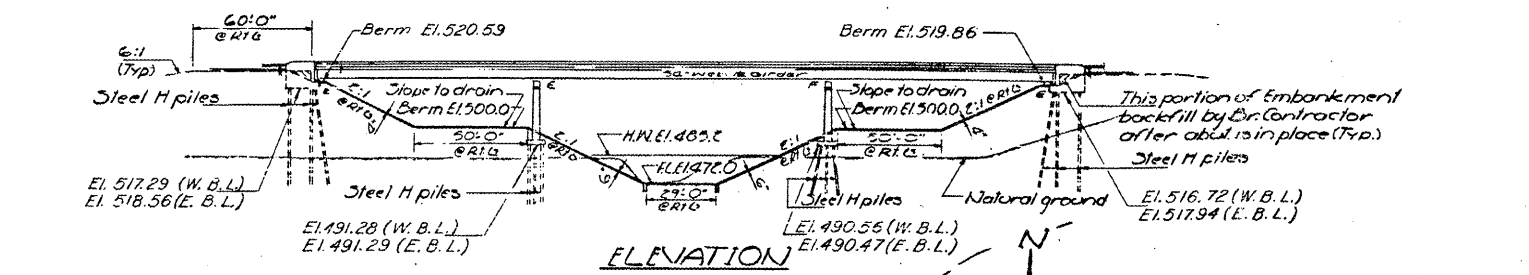


STATE OF ILLINOIS
DEPARTMENT OF TRANSPORTATION

PROJECT NO.	SECTION	SUBJECT	TOTAL SHEETS	SHEET NO.
FA-408	86-9B-3	Scott	25	5
SHEET NO. 1 21 SHEETS				

Bench Mark: TBL #12 RR spike in roof of 90' tree on West bank of Plum Creek, 1400' South of E. FA Rte. 408 Elev. 403.63
No exist. structure



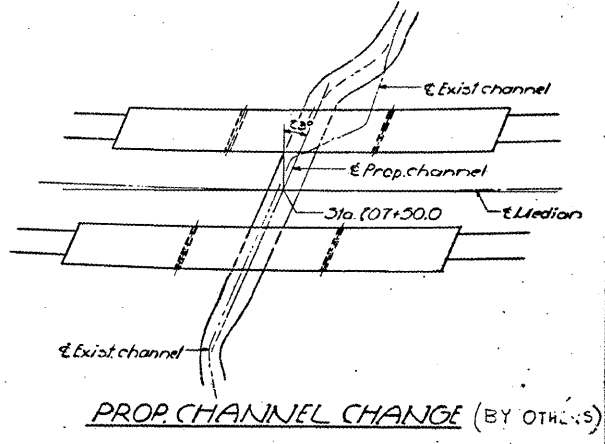
(*) - Structure Number to be supplied by District.

STATION 207+50.00
BUILT 197 BY
STATE OF ILLINOIS
FA. R. 408 SEC. 86-9B-3
FA. PROJ. EBF-408-1(40)
LOADING HS20
(*) STR. NO. _____

NAME PLATE
(See Sid. 2113)

Sta. 207+50
+0.198%
PI. Sta. 207+10
Elev. 526.50
LVC = 2000'

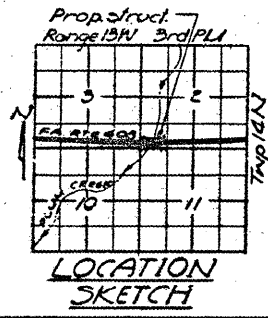
PROFILE GRADE
(At Median edge)



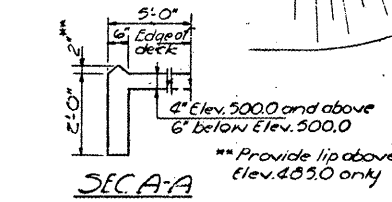
CURVE DATA
PI. Sta. 207+23.68
PC. Sta. 208+11.09
PT. Sta. 212+33.54
Δ = 10° 15' 28"
D = 1° 00' 00"
T = 512.84'
R = 5729.58'
L = 1022.45'
E = 22.88'
X = 041.1'
SE. Attained:
Sta. 200+51.09 - Sta. 208+91.09
Sta. 211+53.54 - Sta. 213+92.54

WATERWAY INFORMATION
Drainage Area 11,568 Acres
Required Opening 730 Sq. Ft.
Proposed Opening 730 Sq. Ft.
Q(50) = 4500 cfs Created Head 0.14'
Q(100) = 3675 cfs Created Head 0.20'
H.W. Elev. (100) 406.3

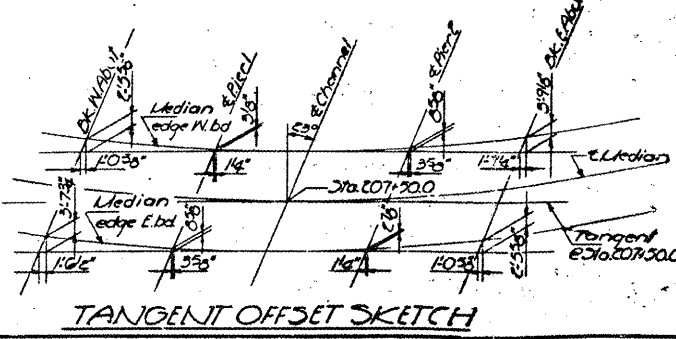
DESIGN STRESSED
f'c = 3,500 psi
fy = 60,000 psi Reinforcement
fs = 20,000 psi Struct. Steel



PROJECT EBF-408-1(40)
GENERAL PLAN & ELEVATION
FA. R. 408 OVER PLUM CREEK
SECTION 86-9B-3
SCOTT COUNTY
STATION 207+50.00



DESIGNED	APR 1976	EXAMINED	DEC 23 1976
CHECKED	JAN 1976	PASSED	
DRAWN	JAN 1976	APPROVED	
CHECKED	JAN 1976		



LOADING HS20-44

FOR INFORMATION ONLY

TYPICAL BRIDGE PLANS
FAI 72 (I-72)
(86-9) BRIDGE PAINTING
SCOTT COUNTY