

**STATE OF ILLINOIS**  
**DEPARTMENT OF TRANSPORTATION**  
**DIVISION OF HIGHWAYS**

**PROPOSED**  
**HIGHWAY PLANS**

FAP ROUTE 116 (IL 130)  
 SECTION (126,127)RS-5  
 PROJECT ACF-0116(057)  
 RESURFACING  
 EDWARDS COUNTY

C-97-067-07

PROJECT BEGINS:  
 STA. 631 + 88.00

FOR INDEX OF SHEETS, SEE SHEET NO. 2

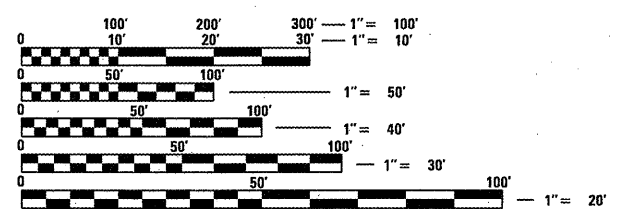
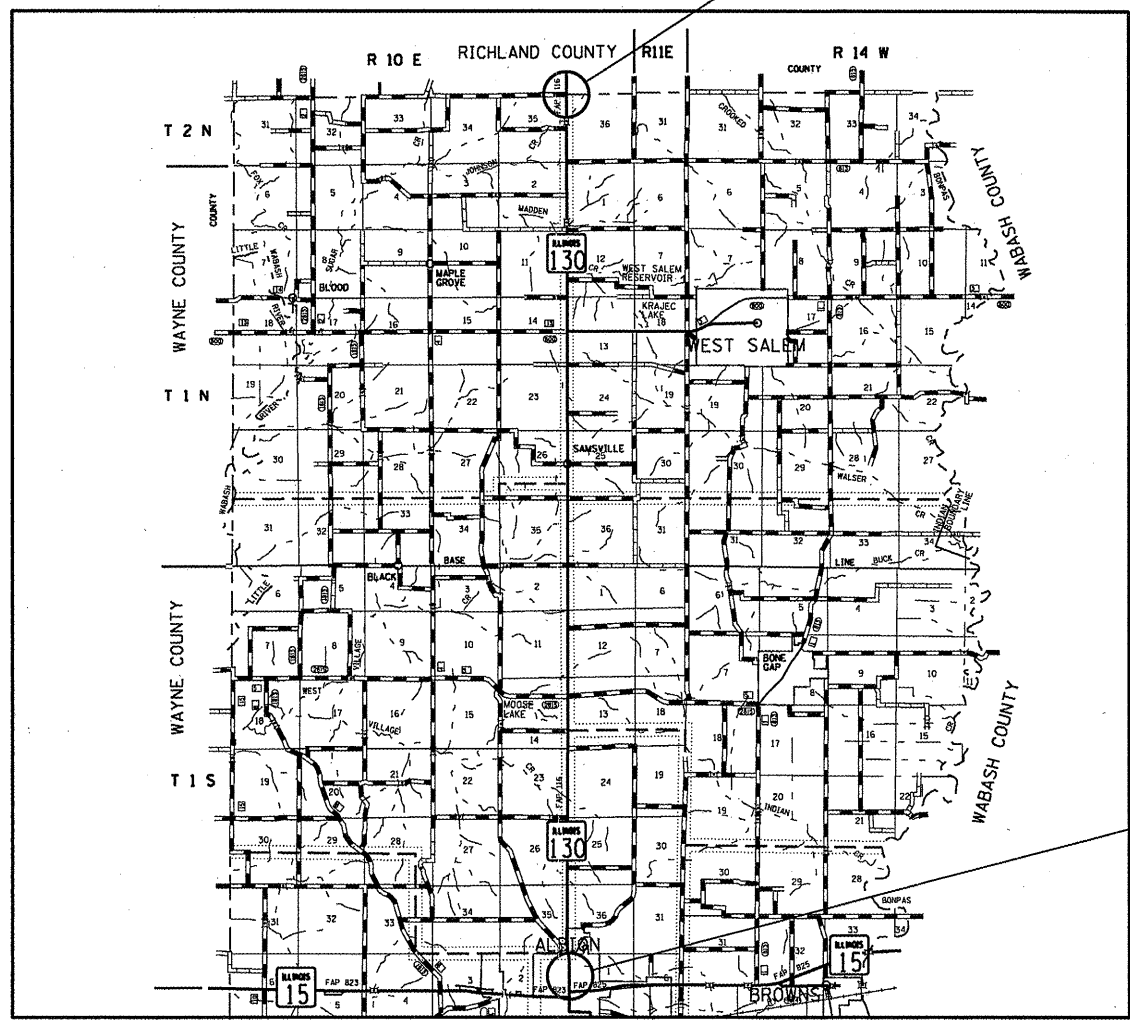
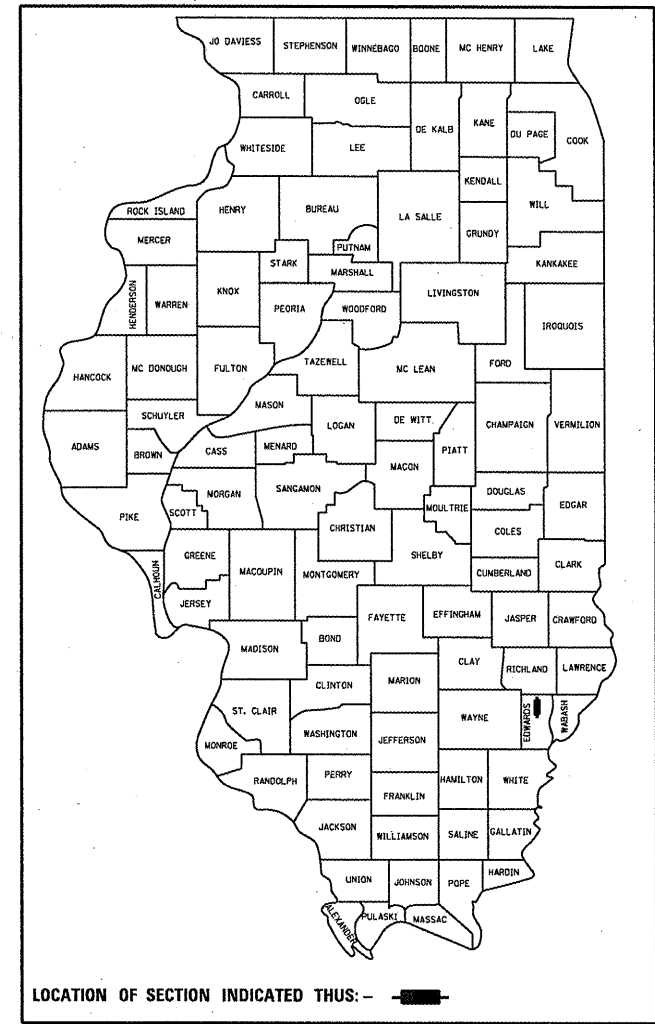
**STATION EQUATIONS:**

STA. 1295 + 34.37 (BK) = STA. 1295 + 38.60 (AH)  
 STA. 1300 + 40.60 (BK) = STA. 1300 + 37.37 (AH)  
 STA. 1306 + 22.20 (BK) = STA. 1306 + 28.50 (AH)

ADT = 4200 (2009)

F.A.P. RTE.	SECTION	COUNTY	TOTAL SHEETS	SHEET NO.
116	(126,127)RS-5	EDWARDS	51	1
		ILLINOIS	CONTRACT NO. 74247	

D-97-037-07



FULL SIZE PLANS HAVE BEEN PREPARED USING STANDARD ENGINEERING SCALES. REDUCED SIZED PLANS WILL NOT CONFORM TO STANDARD SCALES. IN MAKING MEASUREMENTS ON REDUCED PLANS, THE ABOVE SCALES MAY BE USED.

J.U.L.I.E.  
 JOINT UTILITY LOCATION INFORMATION FOR EXCAVATION  
 1-800-892-0123  
 OR 811

PROJECT ENGINEER: TOM RONAN  
 PROJECT MANAGER: JEFF DAVISON  
 PHONE: (217)-342-8314  
 CONTRACT NO. 74247

GROSS LENGTH = 68,537.96 FT. = 12.98 MILES  
 NET LENGTH = 68,537.96 FT. = 12.98 MILES

PROJECT ENDS:  
 STA. 1377 + 32.26

STATE OF ILLINOIS  
 DEPARTMENT OF TRANSPORTATION  
 DIVISION OF HIGHWAYS

SUBMITTED *March 22, 2012*  
*Roger D. Duckell*  
 DEPUTY DIRECTOR OF HIGHWAYS/REGION ENGINEER

*May 11, 2012*  
*John D. Baranzelli, P.E.*  
 acting ENGINEER OF DESIGN AND ENVIRONMENT

*May 11, 2012*  
*William R. Freyer*  
 acting DIRECTOR OF HIGHWAYS, CHIEF ENGINEER

**PRINTED BY THE AUTHORITY**  
**OF THE STATE OF ILLINOIS**