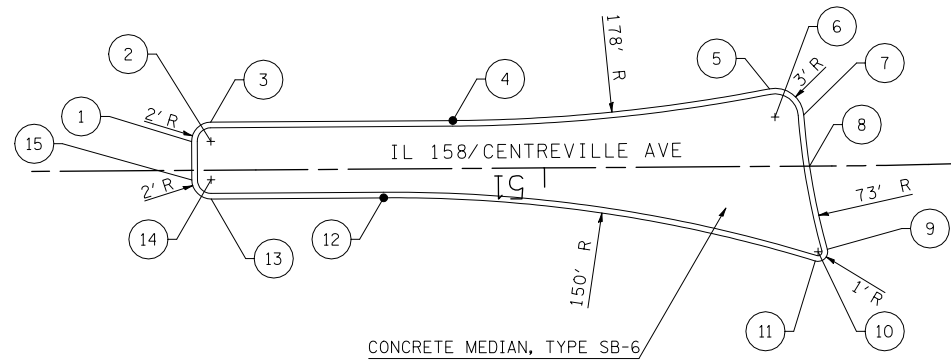
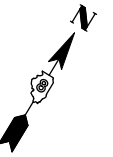
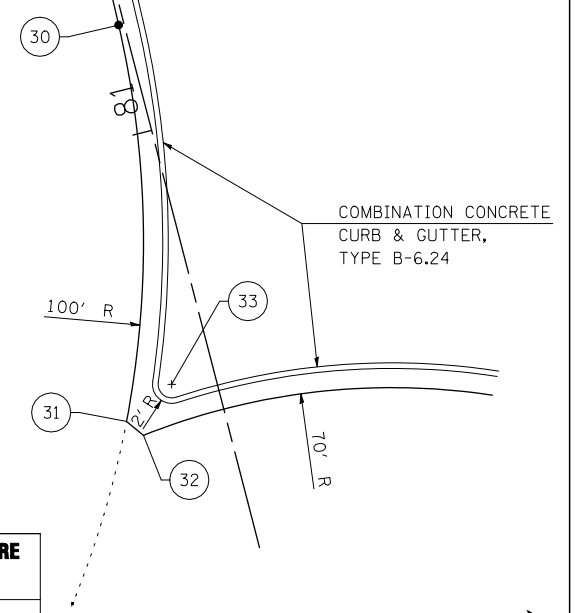


**SOUTH SPLITTER ISLAND
(SOUTH ROUNDABOUT)**

| POINT NUMBER | NORTHING | EASTING |
|--------------|-------------|--------------|
| 1 | 669439.4983 | 2343848.6111 |
| 2 | 669440.5400 | 2343850.3184 |
| 3 | 669442.2473 | 2343849.2767 |
| 4 | 669455.3873 | 2343870.8124 |
| 5 | 669475.2170 | 2343897.3838 |
| 6 | 669472.9902 | 2343899.3942 |
| 7 | 669474.7265 | 2343901.8407 |
| 8 | 669470.4583 | 2343905.1126 |
| 9 | 669463.9922 | 2343911.1549 |
| 10 | 669463.2664 | 2343910.4669 |
| 11 | 669462.2960 | 2343910.7083 |
| 12 | 669444.7771 | 2343868.7824 |
| 13 | 669435.4181 | 2343853.4435 |
| 14 | 669437.1254 | 2343852.4018 |
| 15 | 669436.0837 | 2343850.6945 |



IL 15 EASTBOUND EXIT

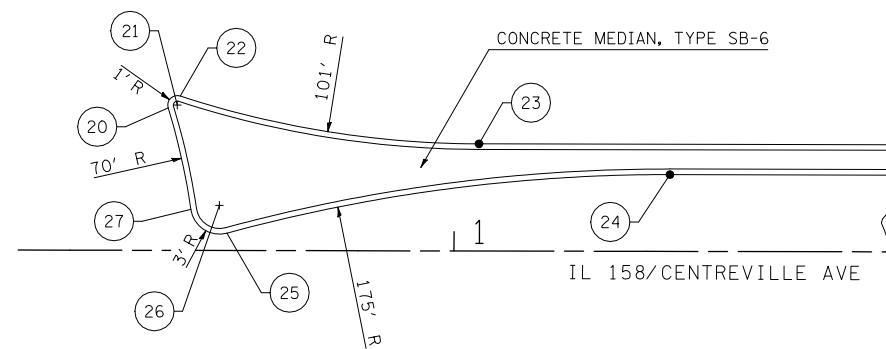


**IL RTE 15 EB EXIT RAMP - ENTRY FLARE
(SOUTH ROUNDABOUT)**

| POINT NUMBER | NORTHING | EASTING |
|--------------|-------------|--------------|
| 30 | 669589.8082 | 2343884.3088 |
| 31 | 669554.8307 | 2343906.2915 |
| 32 | 669554.4963 | 2343908.5400 |
| 33 | 669560.5725 | 2343908.3262 |

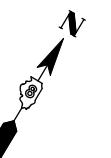
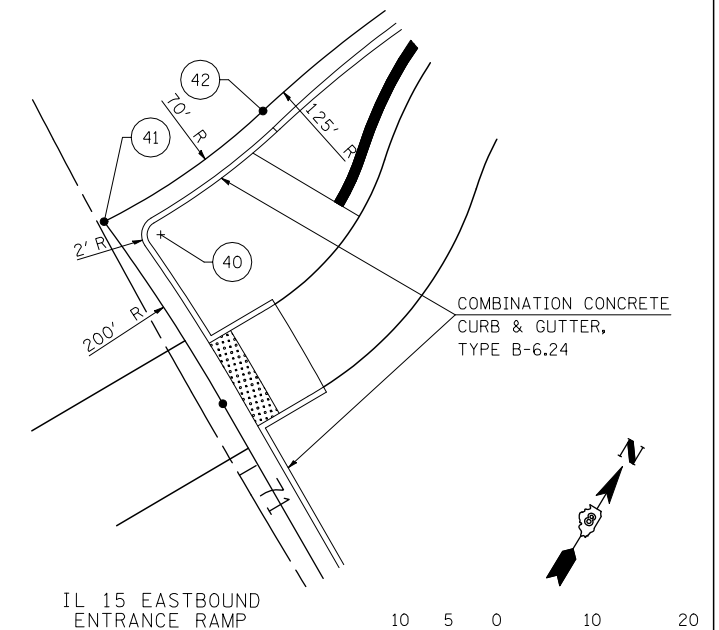
**SOUTH SPLITTER ISLAND
(SOUTH ROUNDABOUT)**

| POINT NUMBER | NORTHING | EASTING |
|--------------|-------------|--------------|
| 20 | 669560.8588 | 2344016.8617 |
| 21 | 669561.6028 | 2344017.5298 |
| 22 | 669562.5775 | 2344017.3060 |
| 23 | 669574.3360 | 2344046.5447 |
| 24 | 669581.8324 | 2344065.2465 |
| 25 | 669552.8366 | 2344028.8285 |
| 26 | 669554.9141 | 2344026.6643 |
| 27 | 669553.0179 | 2344024.3396 |



**IL RTE 15 EB ENTRANCE RAMP - EXIT FLARE
(SOUTH ROUNDABOUT)**

| POINT NUMBER | NORTHING | EASTING |
|--------------|-------------|--------------|
| 40 | 669476.4462 | 2344029.0849 |
| 41 | 669474.5689 | 2344023.3287 |
| 42 | 669492.9777 | 2344031.5777 |



IL 15 EASTBOUND
ENTRANCE RAMP



① F.A.P. RTE 809 / F.A.U. RTE 9251 / F.A.U. RTE 9269

| | | | |
|---|-----------------------------|------------|-----------|
| FILE NAME = | USER NAME = beriechmann | DESIGNED - | REVISED - |
| \\0906600\0906603\cad\plans\061-0876006-Sht-Intersec-02.dgn | | DRAWN - | REVISED - |
| | PLOT SCALE = 20.0000' / IN. | CHECKED - | REVISED - |
| | PLOT DATE = 3/20/2012 | DATE - | REVISED - |

**STATE OF ILLINOIS
DEPARTMENT OF TRANSPORTATION**

**HORNER &
SHIRIN, INC.
ENGINEERS**

**INTERSECTION DETAILS
SOUTHERN ROUNDABOUT**

SCALE: SHEET NO. 2 OF 3 SHEETS STA. TO STA.

| F.A. RTE. | SECTION | COUNTY | TOTAL SHEETS | SHEET NO. |
|-----------|---------|-----------|--------------|-----------|
| ① | 135-N | ST. CLAIR | 206 | 100 |

CONTRACT NO. 76D06
ILLINOIS FED. AID PROJECT