

**COORDINATE TABLES**

NB I-55				
POINT	CURVE	STATION	NORTHING	EASTING
PC	55N-1	50+00.00	14041334.12	2454168.10
PT	55N-1	51+92.01	14041400.74	2454348.18
PT	55N-1	53+82.93	14041433.01	2454537.47
PC	55N-2	59+63.55	14041530.58	2455109.83
PT	55N-2	62+39.34	14041576.92	2455381.70
PT	55N-2	65+13.69	14041670.46	2455641.15
PC	55N-3	77+98.77	14042106.31	2456850.06
PT	55N-3	79+77.22	14042166.83	2457017.93
PCC	55N-3, 55N-4	81+54.52	14042259.14	2457170.66
PT	55N-4	84+69.84	14042422.26	2457440.52
PCC	55N-4, 55N-5	87+79.48	14042663.80	2457643.23
PT	55N-5	89+19.86	14042771.33	2457733.48
PT	55N-5	90+59.82	14042889.92	2457808.60
POT		109+06.78	14044450.13	2458797.04

**RAMP 55S70W**

POINT	CURVE	STATION	NORTHING	EASTING
POT		50+00.00	14042995.94	2457811.53
PC	55S70W-1	50+98.71	14042912.70	2457758.49
PT	55S70W-1	54+34.08	14042629.87	2457578.26
PCC	55S70W-1, 55S70W-2	57+58.25	14042452.69	2457293.52
PT	55S70W-2	60+50.80	14042298.13	2457045.13
PCC	55S70W-2, 55S70W-3	63+40.22	14042210.65	2456765.97
PT	55S70W-3	67+79.76	14042079.20	2456346.55
PT	55S70W-3	71+89.66	14042221.72	2455930.76
PC	55S70W-4	74+57.77	14042308.66	2455677.13
PT	55S70W-4	81+39.12	14042529.58	2455032.59
PT	55S70W-4	87+95.40	14043017.99	2454557.52

**COORDINATE TABLES**

SB I-55				
POINT	CURVE	STATION	NORTHING	EASTING
POT		50+00.00	14044468.14	2458768.42
PC	55S-1	62+40.06	14043418.65	2458107.87
PT	55S-1	64+62.70	14043230.22	2457989.28
PT	55S-1	66+85.34	14043042.46	2457869.64
PC	55S-2	68+56.88	14042897.80	2457777.45
PT	55S-2	71+51.26	14042649.53	2457619.25
PCC	55S-2, 55S-3	74+40.19	14042466.69	2457388.53
PT	55S-3	78+46.09	14042214.59	2457070.41
PCC	55S-3, 55S-4	82+39.72	14042116.16	2456676.63
PT	55S-4	85+55.05	14042039.69	2456370.72
PT	55S-4	88+58.42	14042111.87	2456063.77
PC	55S-5	91+38.81	14042176.06	2455790.82
PT	55S-5	93+80.20	14042231.32	2455555.85
PCC	55S-5, 55S-6	96+10.13	14042159.69	2455325.33
PT	55S-6	97+85.47	14042107.66	2455157.89
PT	55S-6	99+58.71	14042013.10	2455010.23

**RAMP 55S64E**

POINT	CURVE	STATION	NORTHING	EASTING
PC	55S64E-1	8+69.30	14,042,199.04	2,456,991.53
PT	55S64E-1	11+75.03	14,042,075.28	2,456,711.97
PT	55S64E-1	14+78.67	14,042,010.30	2,456,413.23
PC	55S64E-2	17+24.63	14,041,958.02	2,456,172.88
PT	55S64E-2	22+26.88	14,041,851.28	2,455,682.11
PT	55S64E-2	23+25.78	14,041,484.71	2,456,025.44
POT		26+70.53	14,041,233.09	2,456,261.11

**COORDINATE TABLES**

RAMP O				
POINT	CURVE	STATION	NORTHING	EASTING
PC	RAMPO-1	10+06.39	14042911.61	2457757.79
PT	RAMPO-1	12+06.12	14042753.27	2457636.06
PCC	RAMPO-1, RAMPO-2	14+04.74	14042619.67	2457487.58
PT	RAMPO-2	16+69.30	14042442.71	2457290.92
PT	RAMPO-2	18+57.82	14042583.64	2457067.02
PC	RAMPO-3	20+98.28	14042711.74	2456863.52
PT	RAMPO-3	22+11.53	14042772.07	2456767.68
PT	RAMPO-3	23+02.74	14042716.91	2456668.76
POT		24+23.97	14042657.87	2456562.87

**RAMP P**

POINT	CURVE	STATION	NORTHING	EASTING
POT		15+00.00	14041351.05	2456659.29
PC	RAMPP-1	16+90.04	14041506.58	2456550.08
PT	RAMPP-1	18+60.32	14041645.93	2456452.23
PT	RAMPP-1	19+51.32	14041734.93	2456597.39
PC	RAMPP-2	21+04.96	14041815.23	2456728.37
PT	RAMPP-2	23+33.57	14041934.72	2456923.27
PT	RAMPP-2	25+61.92	14042069.97	2457107.59
PC	RAMPP-3	25+61.92	14042069.97	2457107.59
PT	RAMPP-3	29+84.93	14042320.24	2457448.62
PCC	RAMPP-3, RAMPP-4	34+02.41	14042655.04	2457707.17
PT	RAMPP-4	35+16.42	14042745.29	2457776.85
PT	RAMPP-4	36+30.23	14042842.35	2457836.68
POT		37+24.71	14042922.78	2457886.25

**RAMP A**

POINT	CURVE	STATION	NORTHING	EASTING
POT		9+73.02	14039977.22	2457428.39
POT		10+30.50	14039932.72	2457464.78
PC	RAMPA-1	16+36.03	14039463.95	2457848.08
PT	RAMPA-1	18+21.27	14039320.55	2457965.34
PT	RAMPA-1	19+62.07	14039157.99	2457876.50

**COORDINATE TABLES**

RAMP 70E55N				
POINT	CURVE	STATION	NORTHING	EASTING
PC	70E55N-1	52+85.08	14042761.40	2454702.61
PT	70E55N-1	55+46.88	14042573.79	2454885.22
PT	70E55N-1	58+07.32	14042357.07	2455032.08
PC	70E55N-2	60+72.28	14042137.73	2455180.73
PT	70E55N-2	71+23.23	14041267.74	2455770.30
PT	70E55N-2	77+49.99	14041817.04	2456666.27
PC	70E55N-3	80+58.72	14041978.40	2456929.47
PT	70E55N-3	86+06.22	14042264.57	2457396.23
PCC	70E55N-3, 70E55N-4	91+41.80	14042697.16	2457731.82
PT	70E55N-4	92+44.00	14042777.90	2457794.46
PT	70E55N-4	93+46.03	14042864.23	2457849.15
POT		94+24.41	14042930.44	2457891.10

**RAMP 64W55N**

POINT	CURVE	STATION	NORTHING	EASTING
POT		50+00.00	14040795.16	2456820.22
PC	64W55N-1	56+89.88	14041328.65	2456382.81
PT	64W55N-1	62+02.73	14041725.23	2456057.64
PT	64W55N-1	64+03.55	14041926.78	2456529.24
PC	64W55N-2	68+73.18	14042111.33	2456961.08
PT	64W55N-2	70+01.72	14042161.85	2457079.28
PCC	64W55N-2, 64W55N-3	71+29.83	14042228.34	2457189.28
PT	64W55N-3	71+67.17	14042247.65	2457221.24
PT	64W55N-3	72+04.50	14042268.18	2457252.42

**EXCHANGE AVENUE**

POINT	CURVE	STATION	NORTHING	EASTING
POT		10+00.00	14042766.16	2456456.52
POT		27+42.42	14041523.02	2457677.43

\* THREE-POINT TIE SET FOR THIS POINT

PROP. CURVE 55S-1  
PI STA. = 64+62.70  
Δ = 0° 19' 12" (RT)  
D = 0° 04' 19"  
R = 79,694.32'  
T = 222.64'  
L = 445.28'  
E = 0.31'  
P.C. STA = 62+40.06  
P.T. STA = 66+85.34

PROP. CURVE 55S-2  
PI STA. = 71+51.26  
Δ = 19° 05' 52" (RT)  
D = 3° 16' 27"  
R = 1,750.00'  
T = 294.38'  
L = 583.31'  
E = 24.59'  
P.C. STA = 68+56.88  
P.T. STA = 74+40.19

PROP. CURVE 55S-3  
PI STA. = 78+46.09  
Δ = 24° 21' 42" (RT)  
D = 3° 02' 49"  
R = 1,880.42'  
T = 405.90'  
L = 799.54'  
E = 43.31'  
P.C. STA = 74+40.19  
P.T. STA = 82+39.72

PROP. CURVE 55S-4  
PI STA. = 85+55.05  
Δ = 27° 16' 06" (RT)  
D = 4° 24' 27"  
R = 1,300.00'  
T = 315.32'  
L = 618.70'  
E = 37.70'  
P.C. STA = 82+39.72  
P.T. STA = 88+58.42

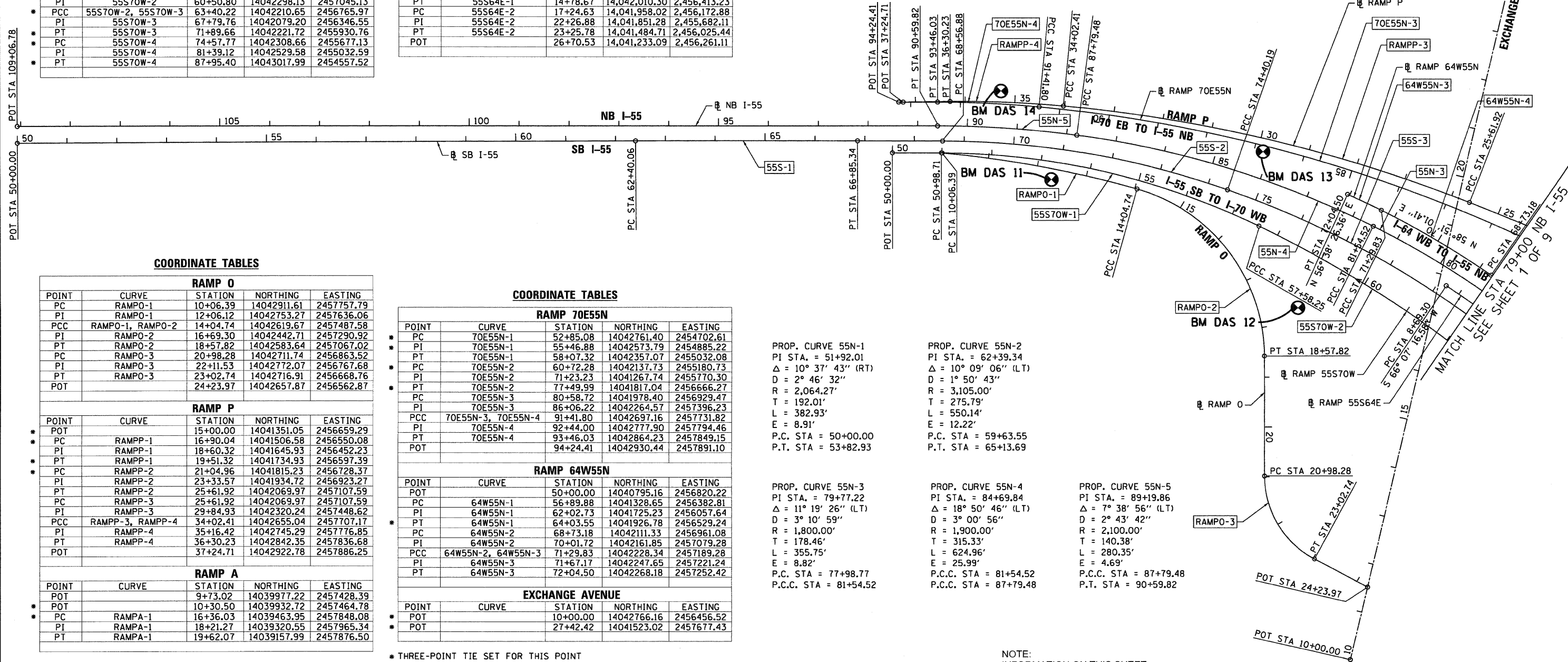
PROP. CURVE 55S-5  
PI STA. = 93+80.20  
Δ = 30° 29' 46" (LT)  
D = 6° 28' 13"  
R = 885.51'  
T = 241.39'  
L = 471.32'  
E = 32.31'  
P.C. STA = 91+38.81  
P.T. STA = 96+10.13

PROP. CURVE 55S-6  
PI STA. = 97+85.47  
Δ = 15° 22' 19" (LT)  
D = 4° 24' 36"  
R = 1,299.24'  
T = 175.34'  
L = 348.58'  
E = 11.78'  
P.C. STA = 96+10.13  
P.T. STA = 99+58.71

PROP. CURVE 55S64E-1  
PI STA. = 11+75.03  
Δ = 11° 36' 29" (RT)  
D = 1° 54' 18"  
R = 3,007.76'  
T = 305.73'  
L = 609.36'  
E = 15.50'  
P.C. STA = 8+69.30  
P.T. STA = 14+78.67

PROP. CURVE 55S64E-2  
PI STA. = 22+26.88  
Δ = 120° 51' 16" (LT)  
D = 20° 06' 14"  
R = 285.00'  
T = 502.25'  
L = 601.15'  
E = 292.47'  
P.C. STA = 17+24.63  
P.T. STA = 23+25.78

POT STA 50+00.00  
POT STA 109+06.78



PROP. CURVE 55N-1  
PI STA. = 51+92.01  
Δ = 10° 37' 43" (RT)  
D = 2° 46' 32"  
R = 2,064.27'  
T = 192.01'  
L = 382.93'  
E = 8.91'  
P.C. STA = 50+00.00  
P.T. STA = 53+82.93

PROP. CURVE 55N-2  
PI STA. = 62+39.34  
Δ = 10° 09' 06" (LT)  
D = 1° 50' 43"  
R = 3,105.00'  
T = 275.79'  
L = 550.14'  
E = 12.22'  
P.C. STA = 59+63.55  
P.T. STA = 65+13.69

PROP. CURVE 55N-3  
PI STA. = 79+77.22  
Δ = 11° 19' 26" (LT)  
D = 3° 10' 59"  
R = 1,800.00'  
T = 178.46'  
L = 355.75'  
E = 8.82'  
P.C. STA = 77+98.77  
P.C.C. STA = 81+54.52

PROP. CURVE 55N-4  
PI STA. = 84+69.84  
Δ = 18° 50' 46" (LT)  
D = 3° 00' 56"  
R = 1,900.00'  
T = 178.46'  
L = 624.96'  
E = 25.99'  
P.C.C. STA = 81+54.52  
P.C.C. STA = 87+79.48

PROP. CURVE 55N-5  
PI STA. = 89+19.86  
Δ = 7° 38' 56" (LT)  
D = 2° 43' 42"  
R = 2,100.00'  
T = 140.38'  
L = 280.35'  
E = 4.69'  
P.C.C. STA = 87+79.48  
P.T. STA = 90+59.82

NOTE:  
INFORMATION ON THIS SHEET  
FROM CONTRACT 76C52



FILE NAME = DBTRI-76C52-sh1-ATB-03.dgn

USER NAME = searsb

DESIGNED OP

REVISED -

PLT SCALE = 200.0000' / in.

DRAWN OP

REVISED -

PLT DATE = 1/24/2012

CHECKED DBM

REVISED -

DATE 1-20-12

REVISED -

**STATE OF ILLINOIS  
DEPARTMENT OF TRANSPORTATION**

**ALIGNMENT, TIES AND BENCHMARKS**

SCALE: 1"=100' SHEET NO. 3 OF 9 SHEETS STA. TO STA.

F.A.I. RTE.	SECTION	COUNTY	TOTAL SHEETS	SHEET NO.
64	82-1-R(A)/LS	ST. CLAIR	89	9

CONTRACT NO. 76F71  
FED. ROAD DIST. NO. ILLINOIS FED. AID PROJECT