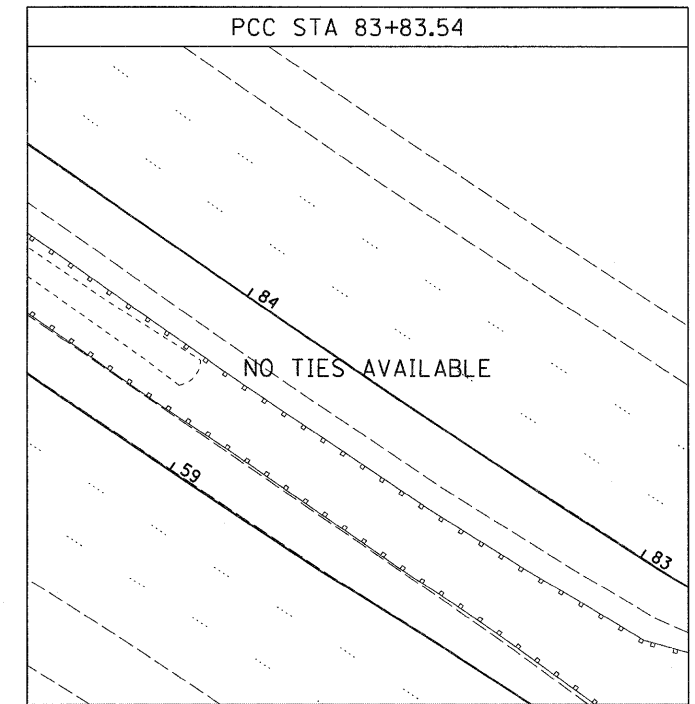
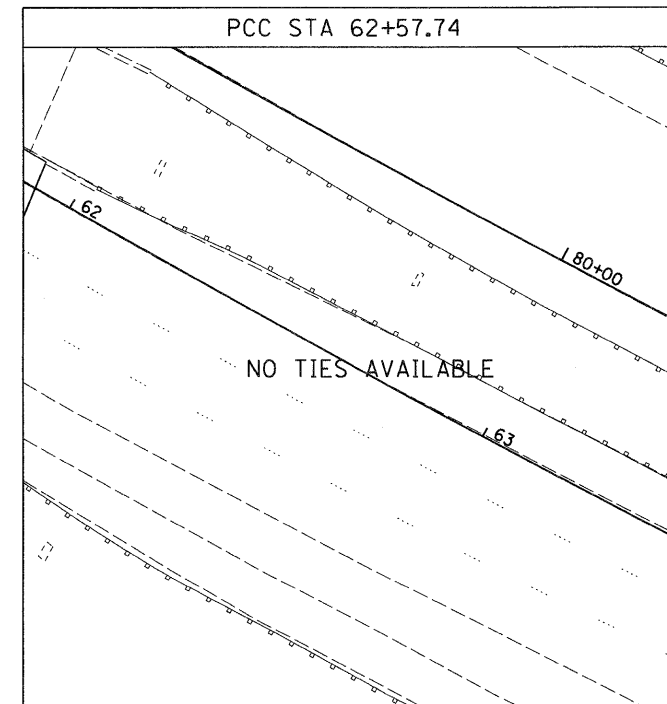
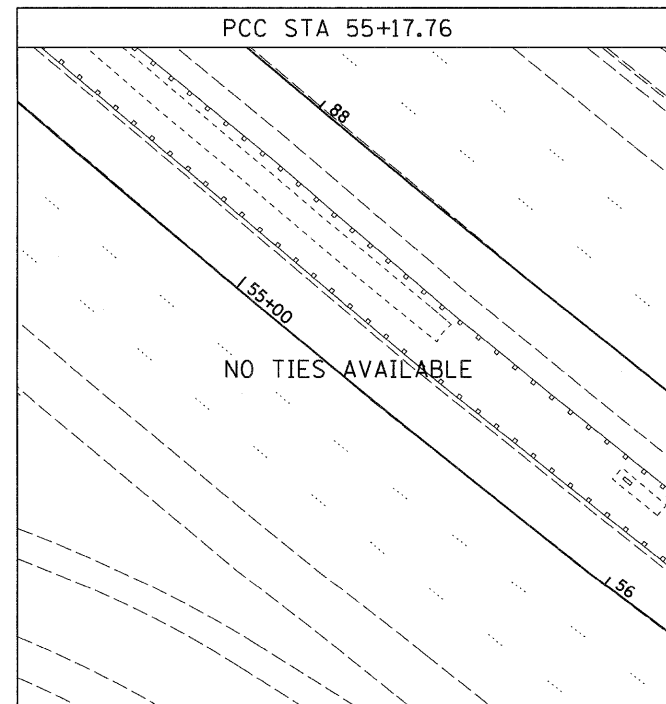
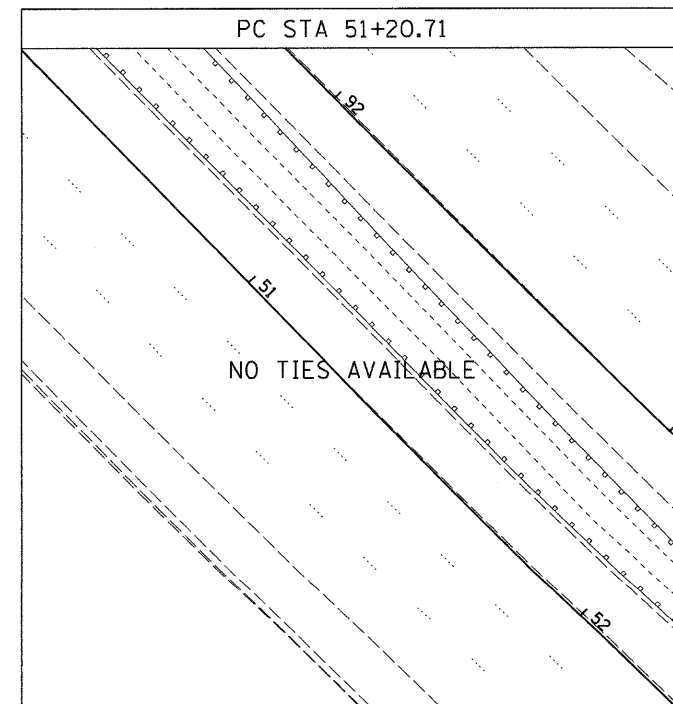
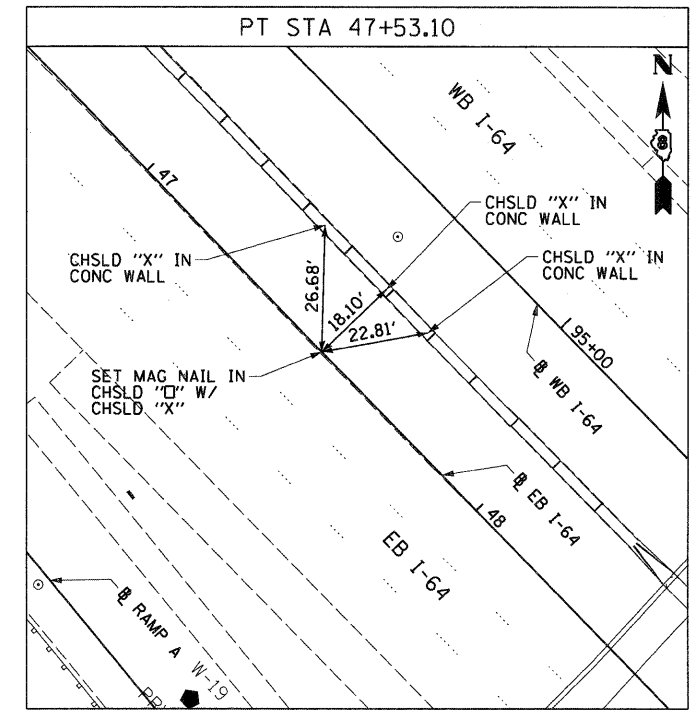
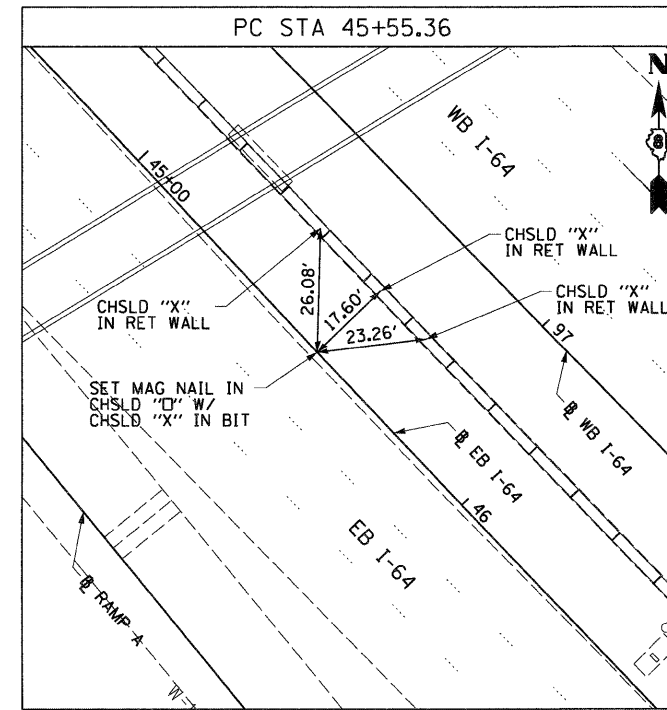
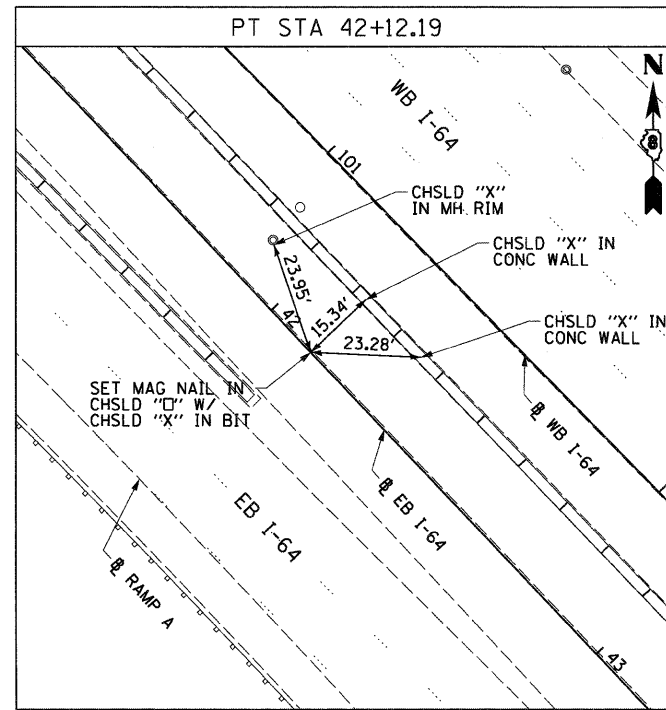
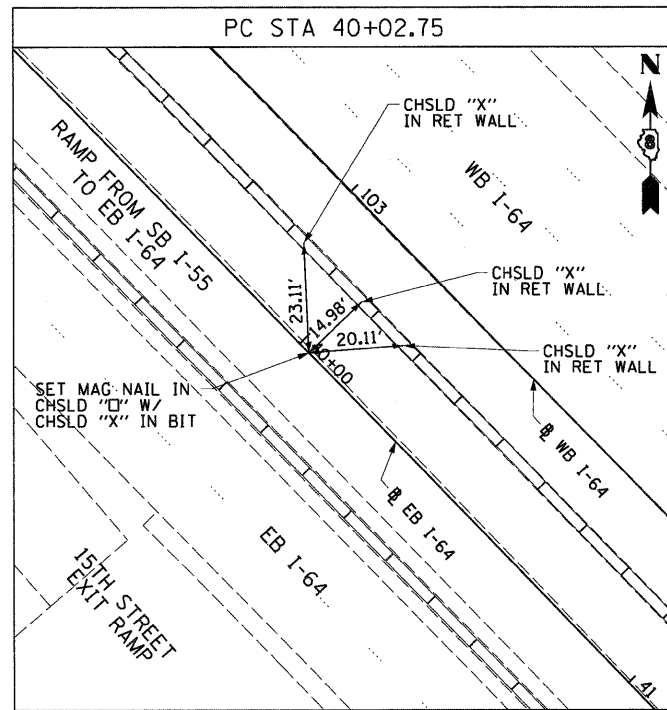


EB I-64



WB I-64

NOTE:  
INFORMATION ON THIS SHEET  
FROM CONTRACT 76C52

FILE NAME = D8TRI-76C52-sh-t-ATB-05.dgn	USER NAME = sear-sb	DESIGNED TTb	REVISED -	<b>STATE OF ILLINOIS DEPARTMENT OF TRANSPORTATION</b>	<b>ALIGNMENT, TIES AND BENCHMARKS</b>	F.A.I. RTE. 64	SECTION 82-1-R(A)LS	COUNTY ST. CLAIR	TOTAL SHEETS 89	SHEET NO. 11
	PLOT SCALE = 40.0000' / in.	CHECKED JAH	REVISED -			CONTRACT NO. 76F71				
	PLOT DATE = 1/24/2012	DATE 1-20-12	REVISED -			FED. ROAD DIST. NO. [ILLINOIS] FED. AID PROJECT				
						SCALE:	SHEET NO. 5 OF 9 SHEETS	STA.	TO STA.	