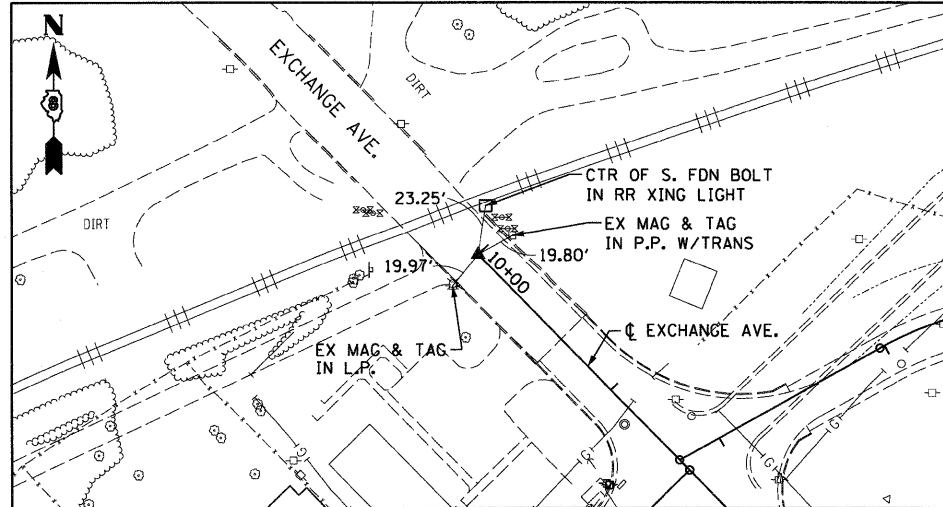
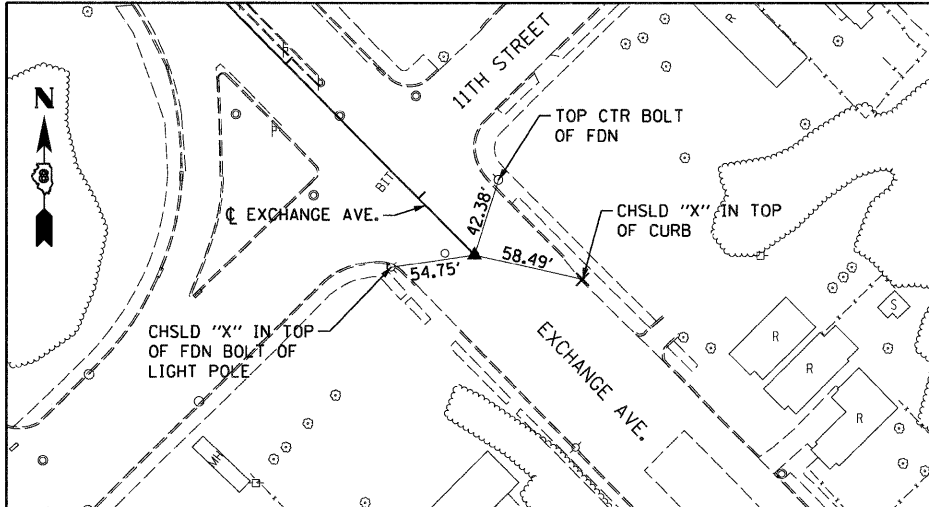


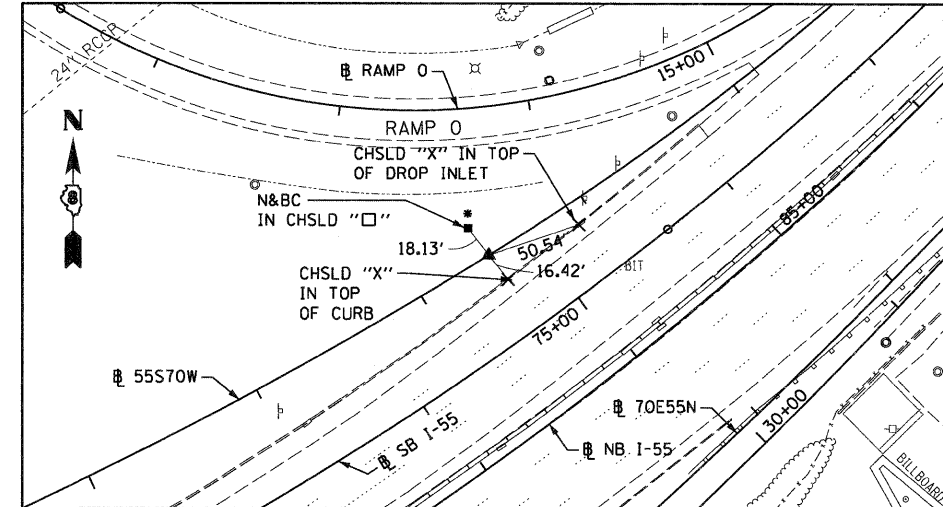
**EXCHANGE AVENUE**  
**POT STA 10+00.00**  
**SET MEG NAIL IN CONC. CRACK W/CHSLD "X"**  
**(CONTROL POINT MAY NEED TO BE RE-ESTABLISHED DUE TO CONSTRUCTION ACTIVITY.)**



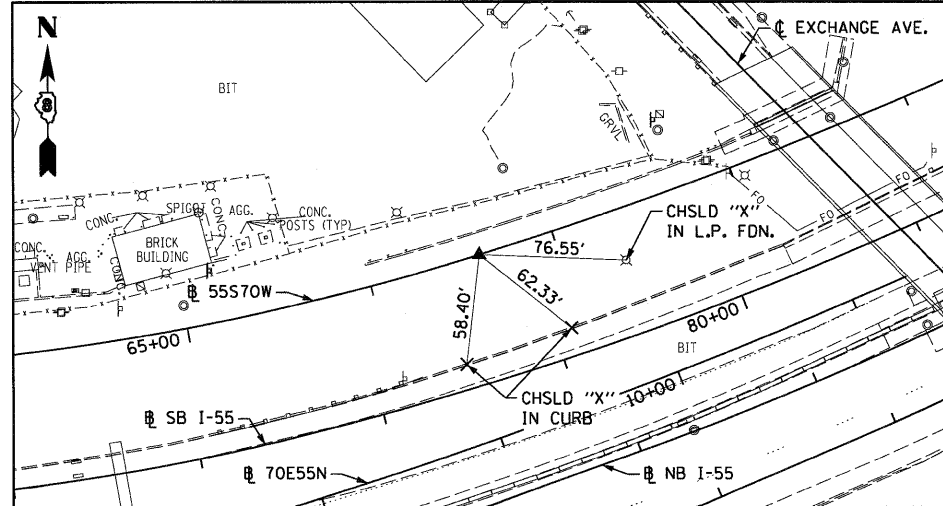
**EXCHANGE AVENUE**  
**POT STA 27+42.42**  
**SET MEG NAIL IN CHSLD "□" W/CHSLD "X"**



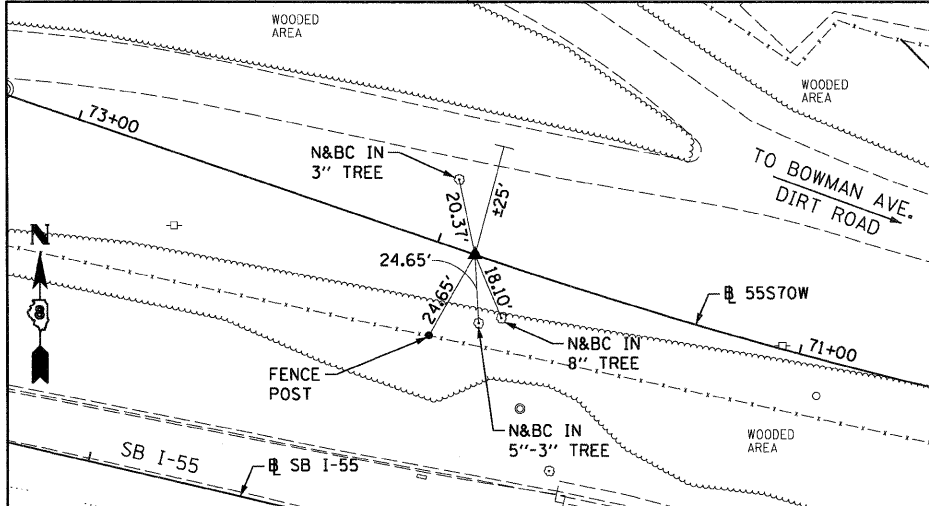
**55S70W**  
**PCC STA 57+58.25**  
**SET 5/8" REBAR W/RED CAP FLUSH W/GR**



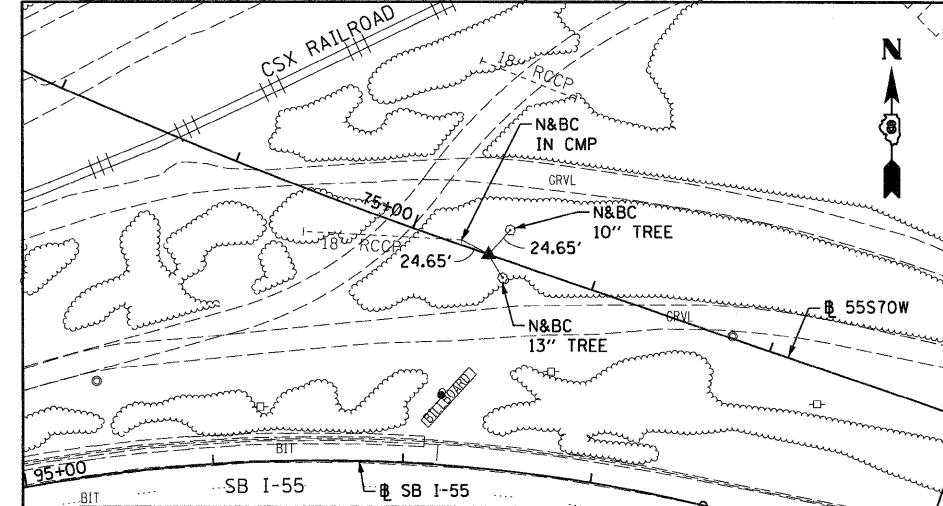
**55S70W**  
**PCC STA 63+40.22**  
**SET 5/8" REBAR W/RED LINENG CAP FLUSH W/GR**  
**(CONTROL POINT MAY NEED TO BE RE-ESTABLISHED DUE TO CONSTRUCTION ACTIVITY.)**



**55S70W**  
**PT STA 71+89.66**  
**SET 5/8" REBAR W/RED CAP FLUSH W/GR**

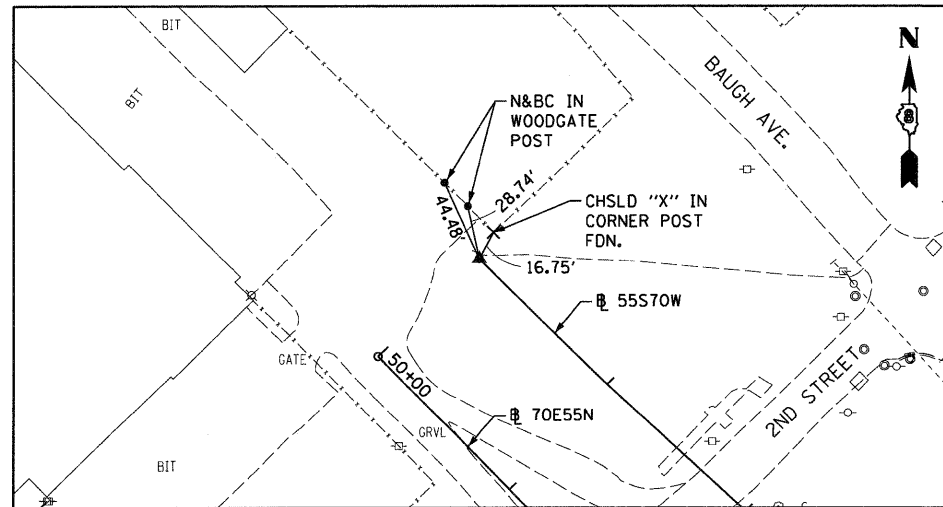


**55S70W**  
**PC STA 74+57.77**  
**SET 5/8" REBAR W/RED LIN TRAV. PT CAP**

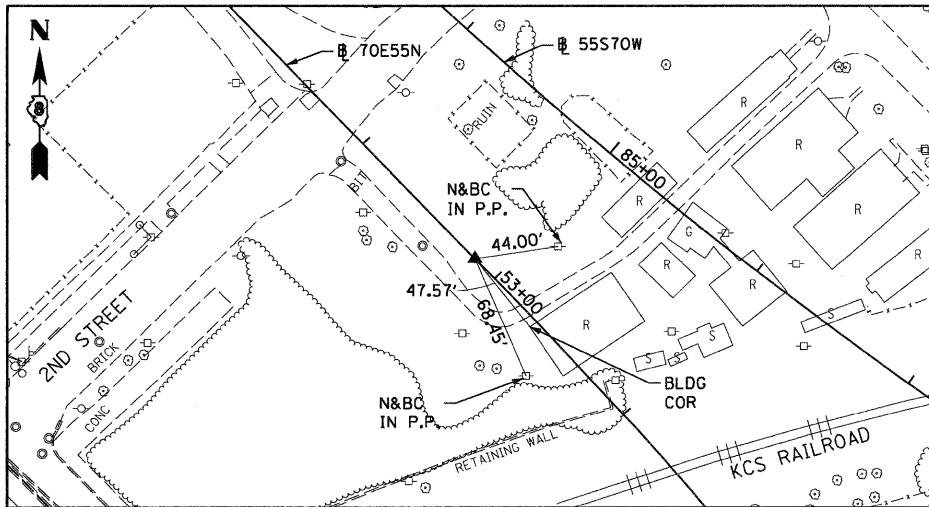


CONTROL POINT MAY NEED TO BE RE-ESTABLISHED DUE TO CONSTRUCTION ACTIVITY.

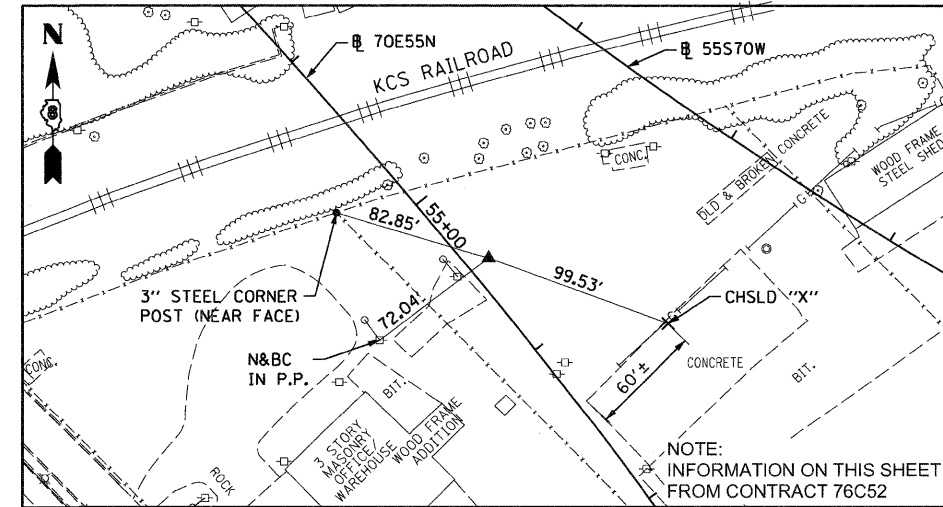
**55S70W**  
**PT STA 87+95.40**  
**SET 5/8" REBAR W/RED LIN ENG. CAP FLUSH W/GR**



**70E55N**  
**PC STA 52+85.08**  
**5/8" I. PIN W/YELLOW CAP**



**70E55N**  
**PI STA 55+46.88**  
**5/8" I. PIN W/YELLOW CAP**



FILE NAME = DBTRI-76C52-sh1-ATB-08.dgn

USER NAME = searsb

DESIGNED OP

REVISED -

PLOT SCALE = 100.0000' / 1" =

DRAWN PHP

REVISED -

PLOT DATE = 1/24/2012

CHECKED DBM

REVISED -

DATE 1-20-12

REVISED -

**STATE OF ILLINOIS**  
**DEPARTMENT OF TRANSPORTATION**

**ALIGNMENT, TIES AND BENCHMARKS**

SCALE: NONE SHEET NO. 8 OF 9 SHEETS STA. TO STA.

F.A.I. RTE.	SECTION	COUNTY	TOTAL SHEETS	SHEET NO.
64	82-1-R(A)LS	ST. CLAIR	89	14
CONTRACT NO. 76F71				
FED. ROAD DIST. NO.		ILLINOIS FED. AID PROJECT		