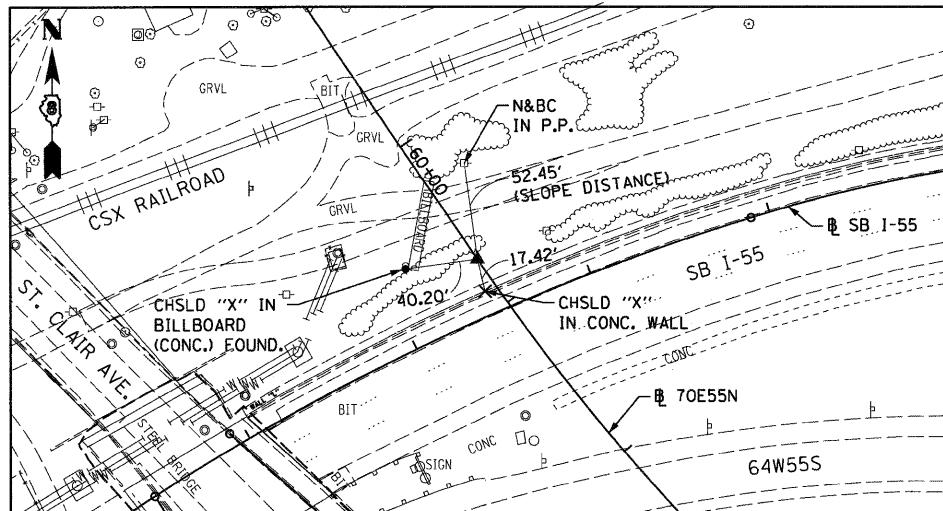
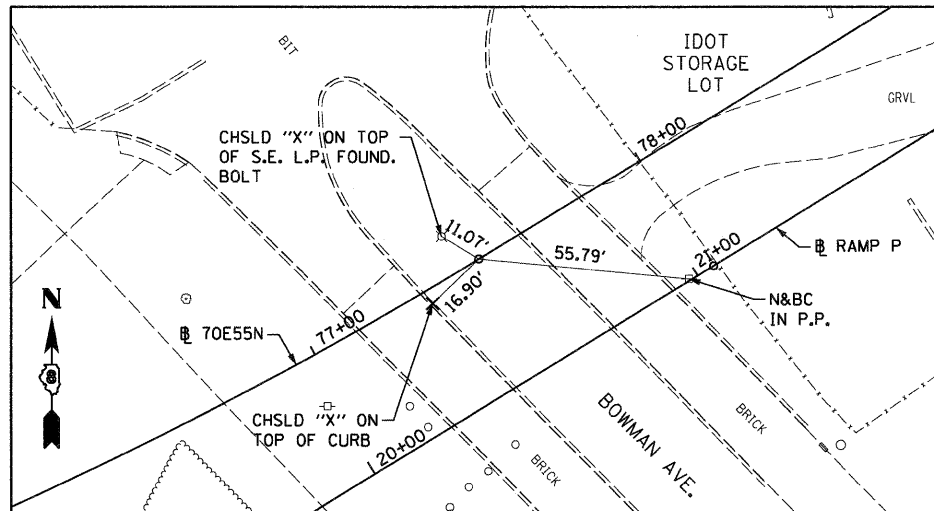


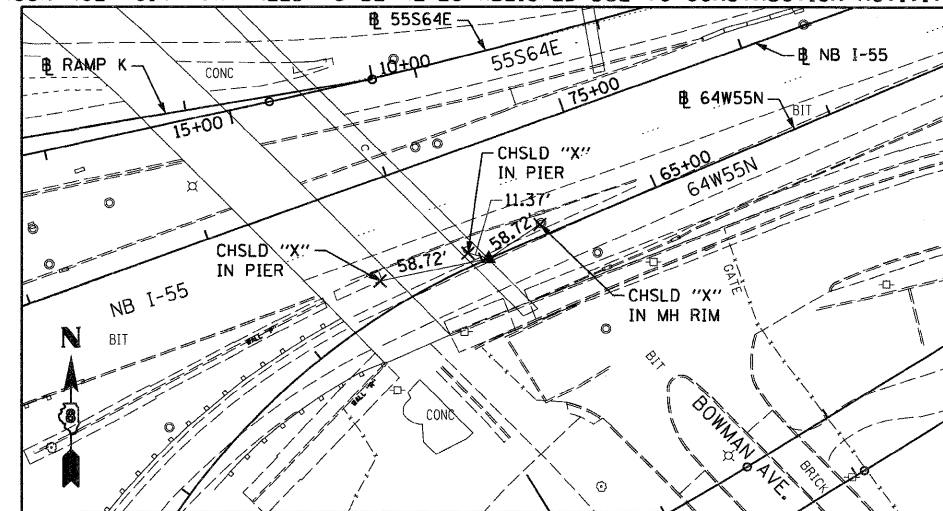
70E55N
PC 60+72.28
5/8" I. PIN W/YELLOW CAP



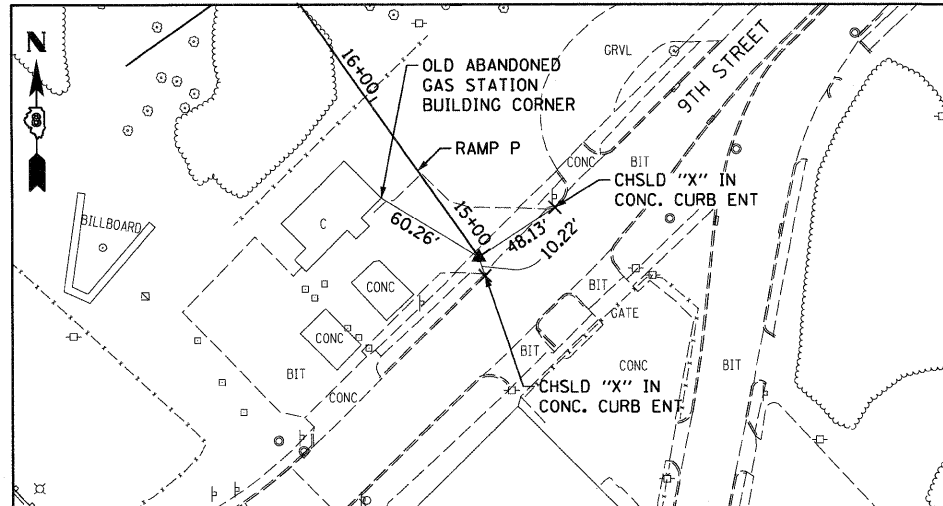
70E55N
PC 77+49.99
5/8" I. PIN



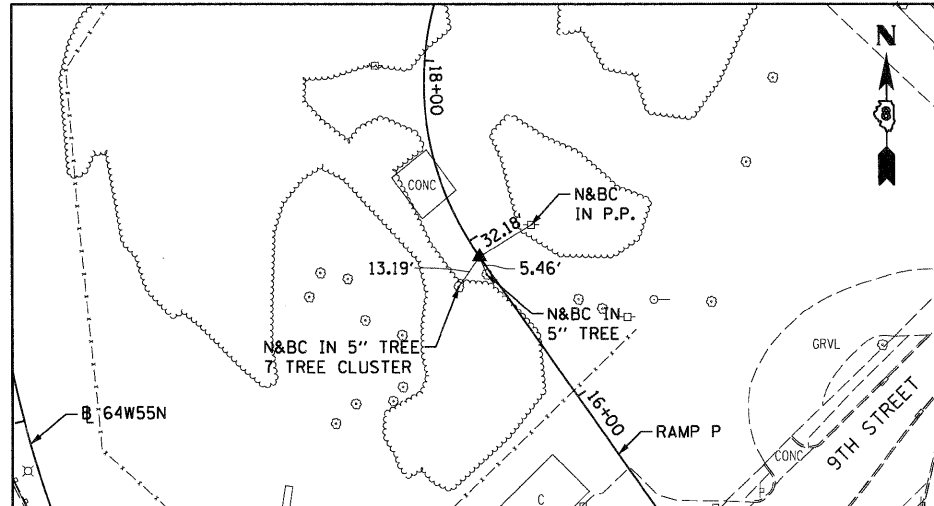
64W55N
P.T. STA 64+03.55
SET MAG NAIL IN CHSLD "X" W/CHSLD "X"
(CONTROL POINT MAY NEED TO BE RE-ESTABLISHED DUE TO CONSTRUCTION ACTIVITY.)



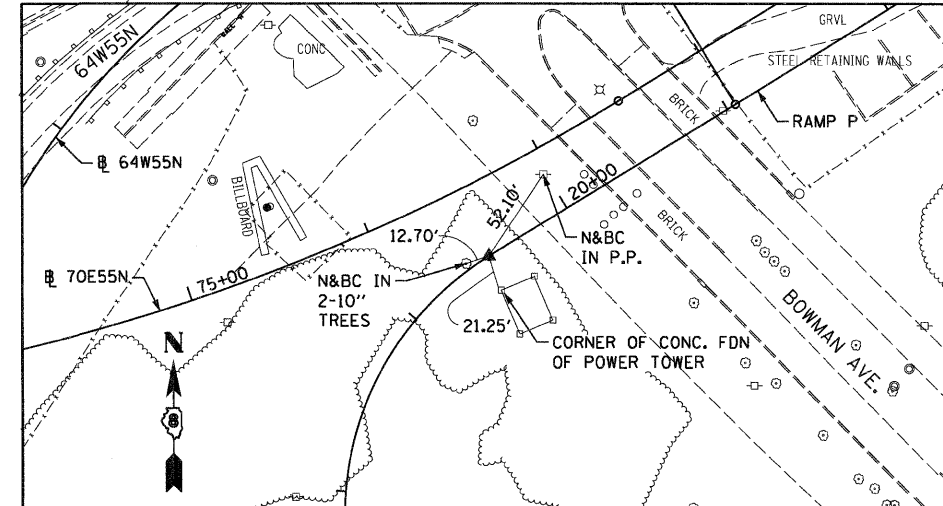
RAMP P
POT STA 15+00 = 520+44.97 (BAUGH)
SET MAG NAIL IN CONC. WITH CHISELLED "+"
(CONTROL POINT MAY NEED TO BE RE-ESTABLISHED DUE TO CONSTRUCTION ACTIVITY.)



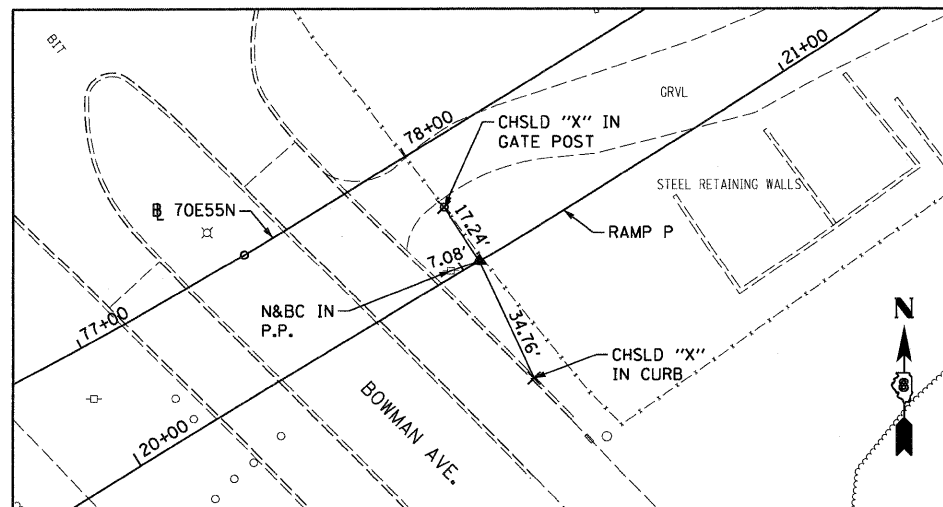
RAMP P
PC STA 16+90.04
SET 5/8" REBAR W/RED CAP FLUSH W/GR



RAMP P
PT STA 19+51.32
SET 5/8" REBAR W/RED CAP FLUSH W/GR



RAMP P
PC STA 21+04.96
SET 5/8" REBAR W/RED LIN ENG. CAP FLUSH W/GR



NOTE:
INFORMATION ON THIS SHEET
FROM CONTRACT 76C52

FILE NAME =
DBTRI-76C52-sh1-ATB-09.dgn

USER NAME = searsb

DESIGNED OP

REVISED -

DRAWN PHP

REVISED -

PLOT SCALE = 100.0000' / 1" =

REVISED -

PLOT DATE = 1/24/2012

REVISED -

CHECKED DBM

DATE 1-20-12

STATE OF ILLINOIS
DEPARTMENT OF TRANSPORTATION

ALIGNMENT, TIES AND BENCHMARKS

SCALE: NONE SHEET NO. 9 OF 9 SHEETS STA. TO STA.

F.A.I. RTE.	SECTION	COUNTY	TOTAL SHEETS	SHEET NO.
64	82-1-R(A)LS	ST. CLAIR	89	15
CONTRACT NO. 76F71				
FED. ROAD DIST. NO.		ILLINOIS FED. AID PROJECT		