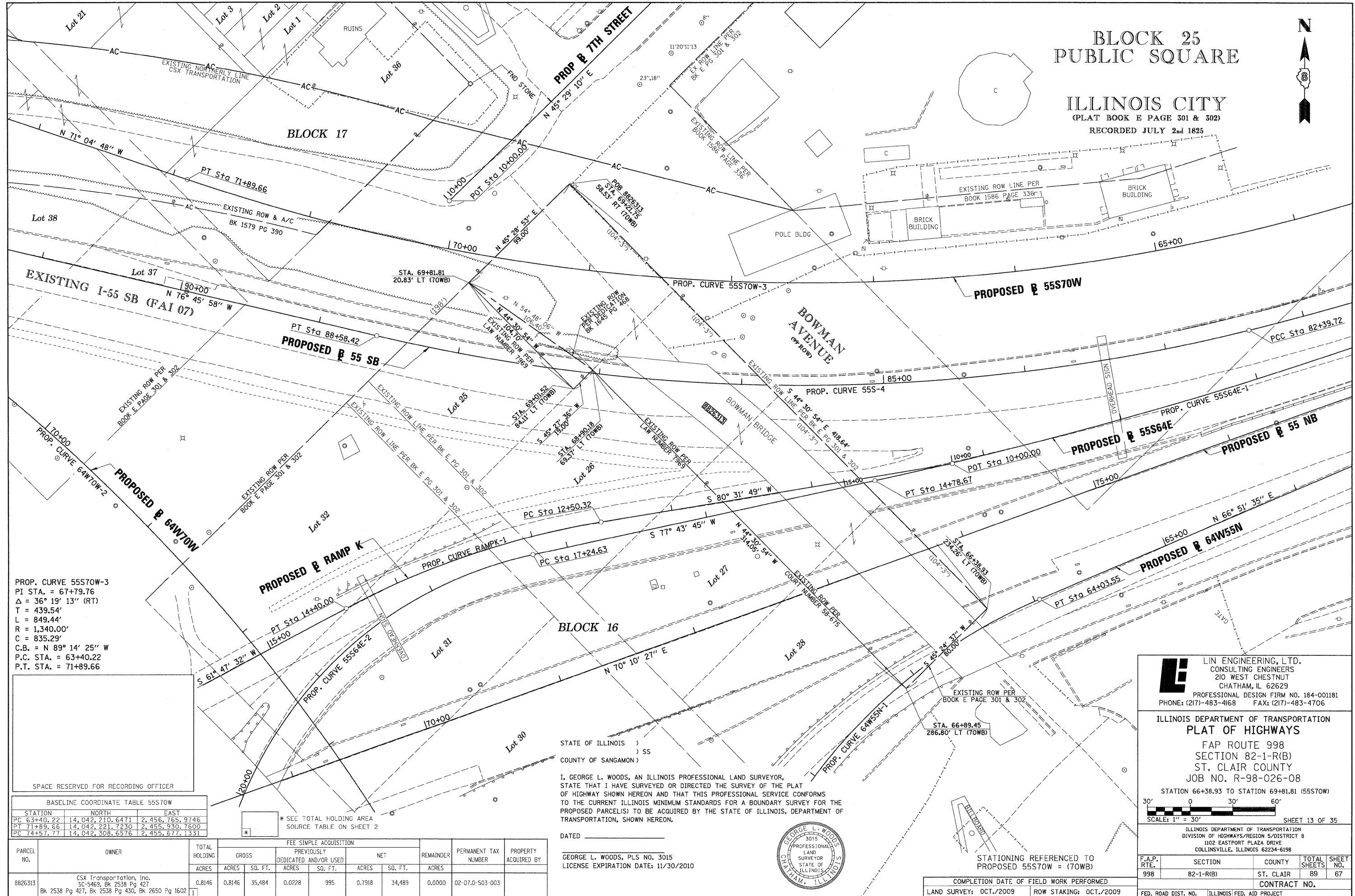
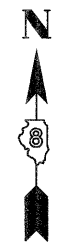


BLOCK 25  
PUBLIC SQUARE

ILLINOIS CITY  
(PLAT BOOK E PAGE 301 & 302)  
RECORDED JULY 2nd 1825



PROP. CURVE 55S70W-3  
PI STA. = 67+79.76  
Δ = 36° 19' 13" (RT)  
T = 439.54'  
L = 849.44'  
R = 1,340.00'  
C = 835.29'  
C.B. = N 89° 14' 25" W  
P.C. STA. = 63+40.22  
P.T. STA. = 71+89.66

SPACE RESERVED FOR RECORDING OFFICER

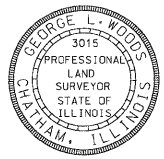
BASELINE COORDINATE TABLE 55S70W

STATION	NORTH	EAST
PC 63+40.22	14,042,210.6471	2,456,765.9746
PT 71+89.66	14,042,221.7230	2,455,930.7600
PC 74+57.77	14,042,308.6576	2,455,677.1331

\* SEE TOTAL HOLDING AREA SOURCE TABLE ON SHEET 2

STATE OF ILLINOIS )  
                                  ) SS  
COUNTY OF SANGAMON )

I, GEORGE L. WOODS, AN ILLINOIS PROFESSIONAL LAND SURVEYOR, STATE THAT I HAVE SURVEYED OR DIRECTED THE SURVEY OF THE PLAT OF HIGHWAY SHOWN HEREON AND THAT THIS PROFESSIONAL SERVICE CONFORMS TO THE CURRENT ILLINOIS MINIMUM STANDARDS FOR A BOUNDARY SURVEY FOR THE PROPOSED PARCEL(S) TO BE ACQUIRED BY THE STATE OF ILLINOIS, DEPARTMENT OF TRANSPORTATION, SHOWN HEREON.



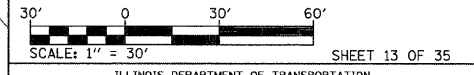
DATED \_\_\_\_\_

GEORGE L. WOODS, PLS NO. 3015  
LICENSE EXPIRATION DATE: 11/30/2010

PARCEL NO.	OWNER	TOTAL HOLDING ACRES	FEE SIMPLE ACQUISITION				PERMANENT TAX NUMBER	PROPERTY ACQUIRED BY			
			GROSS ACRES	PREVIOUSLY DEDICATED AND/OR USED ACRES	NET ACRES	REMAINDER ACRES					
8826313	CSX Transportation, Inc. SC-5469, Bk 2538 Pg 427 Bk 2538 Pg 427, Bk 2538 Pg 430, Bk 2650 Pg 1602	0.8146	0.8146	35,484	0.0228	995	0.7918	34,489	0.0000	02-07.0-503-003	

**LI** LIN ENGINEERING, LTD.  
CONSULTING ENGINEERS  
210 WEST CHESTNUT  
CHATHAM, IL 62629  
PROFESSIONAL DESIGN FIRM NO. 184-001181  
PHONE: (217)-483-4168 FAX: (217)-483-4706

ILLINOIS DEPARTMENT OF TRANSPORTATION  
PLAT OF HIGHWAYS  
FAP ROUTE 998  
SECTION 82-1-R(B)  
ST. CLAIR COUNTY  
JOB NO. R-98-026-08  
STATION 66+38.93 TO STATION 69+81.81 (55S70W)



ILLINOIS DEPARTMENT OF TRANSPORTATION  
DIVISION OF HIGHWAYS/REGION 5/DISTRICT 8  
1102 EASTPORT PLAZA DRIVE  
COLLINGSVILLE, ILLINOIS 62234-6198

F.A.P. RTE.	SECTION	COUNTY	TOTAL SHEETS	SHEET NO.
998	82-1-R(B)	ST. CLAIR	89	67

CONTRACT NO. \_\_\_\_\_

STATIONING REFERENCED TO PROPOSED 55S70W = (70WB)

COMPLETION DATE OF FIELD WORK PERFORMED  
LAND SURVEY: OCT./2009 ROW STAKING: OCT./2009

PLOT DATE = 10/19/2009  
FILE NAME = BFILEL9  
PLOT SCALE = #SCALE#  
USER NAME = #USER#