

PART OF THE NE 14 OF SECTION 18, T2N, R9W, OF THE 3RD PM, ST. CLAIR COUNTY, ILLINOIS

BASELINE COORDINATE TABLE BAUGH AVE. N			
STATION	NORTH	EAST	
PI 5+00.00 (BAUGH AVE. N) =	14, 039, 792.0596	2, 457, 936.9793	
PI 9+74.03 (15TH STREET)			
POT STATION EQUATION	14, 039, 980.7407	2, 457, 754.3083	
7+62.62 BK = 502+62.62 AH			
PI 503+14.42 (BAUGH AVE. N) =	14, 040, 017.9557	2, 457, 718.2788	
PI 20+21.35 (PEDESTRIAN BRIDGE)			

BASELINE COORDINATE TABLE PEDESTRIAN BRIDGE			
STATION	NORTH	EAST	
PI 20+96.00	14, 040, 056.5833	2, 457, 782.1558	
PC 22+41.97	14, 040, 157.7032	2, 457, 887.4242	
PT 23+00.08	14, 040, 156.6563	2, 457, 939.7351	
PI 25+58.22 (PEDESTRIAN BRIDGE) =	14, 039, 970.5226	2, 458, 118.5953	
PI 12+28.65 (15TH STREET)			

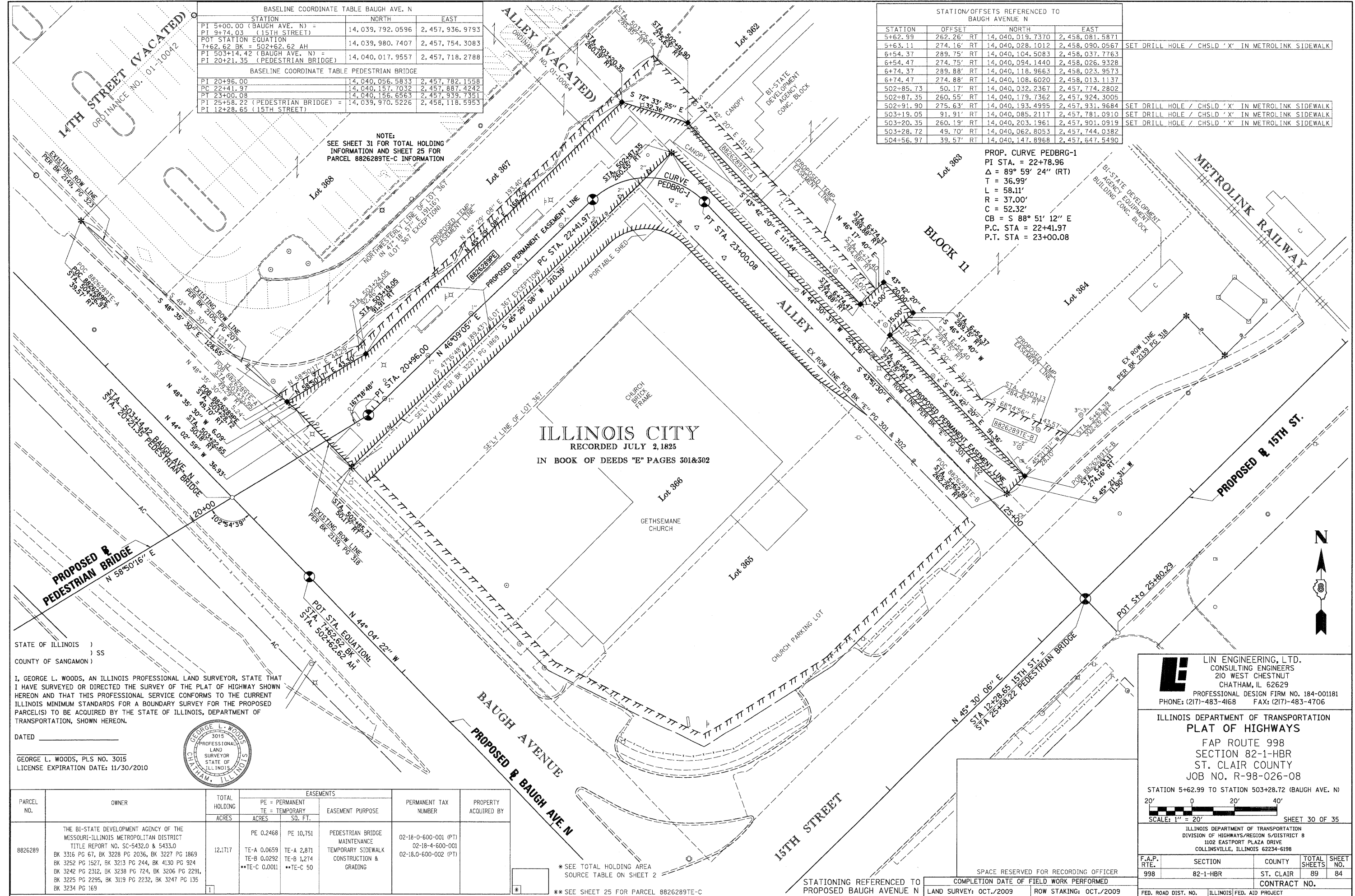
STATION/OFFSETS REFERENCED TO BAUGH AVENUE N			
STATION	OFFSET	NORTH	EAST
5+62.99	262.26' RT	14, 040, 019.7370	2, 458, 081.5871
5+63.11	274.16' RT	14, 040, 028.1012	2, 458, 090.0567
6+54.37	289.75' RT	14, 040, 104.5083	2, 458, 037.7763
6+54.47	274.75' RT	14, 040, 094.1440	2, 458, 026.9328
6+74.37	289.88' RT	14, 040, 118.9663	2, 458, 023.9573
6+74.47	274.88' RT	14, 040, 108.6020	2, 458, 013.1137
502-85.73	50.17' RT	14, 040, 032.2367	2, 457, 774.2802
502+87.35	260.55' RT	14, 040, 179.7362	2, 457, 924.3005
502+91.90	275.63' RT	14, 040, 193.4995	2, 457, 931.9684
503+19.05	91.91' RT	14, 040, 085.2117	2, 457, 781.0910
503+20.35	260.19' RT	14, 040, 203.1961	2, 457, 901.0919
503+28.72	49.70' RT	14, 040, 062.8053	2, 457, 744.0382
504+56.97	39.57' RT	14, 040, 147.8968	2, 457, 647.5490

PROP. CURVE PEDBRG-1
 PI STA. = 22+78.96
 Δ = 89° 59' 24" (RT)
 T = 36.99'
 L = 58.11'
 R = 37.00'
 C = 52.32'
 CB = S 88° 51' 12" E
 P.C. STA = 22+41.97
 P.T. STA = 23+00.08

SET DRILL HOLE / CHSLD 'X' IN METROLINK SIDEWALK

SET DRILL HOLE / CHSLD 'X' IN METROLINK SIDEWALK

SET DRILL HOLE / CHSLD 'X' IN METROLINK SIDEWALK



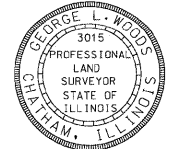
ILLINOIS CITY
 RECORDED JULY 2, 1825
 IN BOOK OF DEEDS "E" PAGES 301&302

STATE OF ILLINOIS)
 COUNTY OF SANGAMON) SS

I, GEORGE L. WOODS, AN ILLINOIS PROFESSIONAL LAND SURVEYOR, STATE THAT I HAVE SURVEYED OR DIRECTED THE SURVEY OF THE PLAT OF HIGHWAY SHOWN HEREON AND THAT THIS PROFESSIONAL SERVICE CONFORMS TO THE CURRENT ILLINOIS MINIMUM STANDARDS FOR A BOUNDARY SURVEY FOR THE PROPOSED PARCEL(S) TO BE ACQUIRED BY THE STATE OF ILLINOIS, DEPARTMENT OF TRANSPORTATION, SHOWN HEREON.

DATED _____

GEORGE L. WOODS, PLS NO. 3015
 LICENSE EXPIRATION DATE: 11/30/2010



PARCEL NO.	OWNER	TOTAL HOLDING ACRES	EASEMENTS		PERMANENT TAX NUMBER	PROPERTY ACQUIRED BY
			PE = PERMANENT ACRES	TE = TEMPORARY SQ. FT.		
8826289	THE BI-STATE DEVELOPMENT AGENCY OF THE MISSOURI-ILLINOIS METROPOLITAN DISTRICT TITLE REPORT NO. SC-5432.0 & 5433.0 BK 3316 PG 67, BK 3228 PG 2036, BK 3227 PG 1869 BK 3252 PG 1527, BK 3213 PG 244, BK 4130 PG 924 BK 3242 PG 2312, BK 3238 PG 724, BK 3206 PG 2291, BK 3225 PG 2295, BK 3119 PG 2232, BK 3247 PG 135 BK 3234 PG 169	12.1717	PE 0.2468 TE-A 0.0659 TE-B 0.0292 TE-C 0.0011	PE 10,751 TE-A 2,871 TE-B 1,274 TE-C 50	02-18-0-600-001 (PT) 02-18-4-600-001 02-18-0-600-002 (PT)	

* SEE TOTAL HOLDING AREA SOURCE TABLE ON SHEET 2

** SEE SHEET 25 FOR PARCEL 8826289TE-C

LI LIN ENGINEERING, LTD.
 CONSULTING ENGINEERS
 210 WEST CHESTNUT
 CHATHAM, IL 62629
 PROFESSIONAL DESIGN FIRM NO. 184-001181
 PHONE: (217)-483-4168 FAX: (217)-483-4706

ILLINOIS DEPARTMENT OF TRANSPORTATION
 PLAT OF HIGHWAYS
 FAP ROUTE 998
 SECTION 82-1-HBR
 ST. CLAIR COUNTY
 JOB NO. R-98-026-08

STATION 5+62.99 TO STATION 503+28.72 (BAUGH AVE. N)

SCALE: 1" = 20'

SHEET 30 OF 35

F.A.P. RTE.	SECTION	COUNTY	TOTAL SHEETS	SHEET NO.
998	82-1-HBR	ST. CLAIR	89	84

CONTRACT NO. _____