

PART OF THE SW 14 OF SECTION 7, T2N, R9W OF THE 3RD PM, ST. CLAIR COUNTY, ILLINOIS

"A"
WALTER PLACE
(PLAT BOOK 27 PAGE 60
RECORDED AUGUST 2nd 1926)

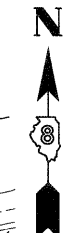
"B"
SUBDIVISION OF PARTS OF
LOTS 211, 212, 213, 214 AND 215
BLOCK 45 ILLINOIS CITY (NOW
PART OF EAST ST. LOUIS ILL.)
(PLAT BOOK P PAGE 21 RECORDED JULY 6th 1909)

"C"
O'CONNOR'S SUBDIVISION
OF LOT 74, BLOCK 36
ILLINOIS CITY SUBDIVISION
EAST ST. LOUIS, ILL.
(PLAT BOOK X PAGE 5) RECORDED MAY 21st 1920

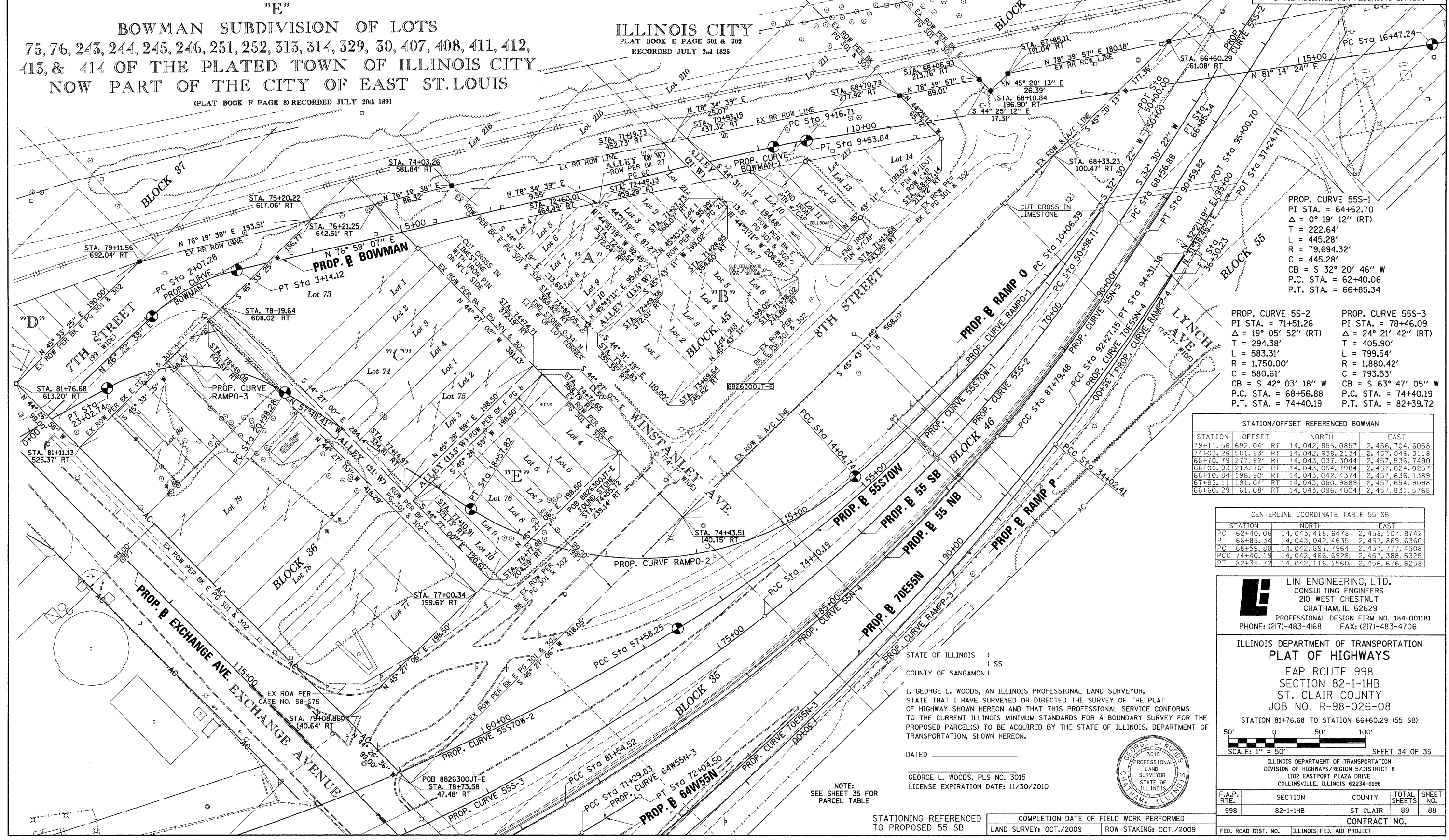
"D"
ILLINOIS CITY SUBDIVISION
PART OF LOTS 69 & 70 OF BLOCK 37
(PLAT BOOK L PAGE 56) RECORDED APRIL 17th 1906

"E"
BOWMAN SUBDIVISION OF LOTS
75, 76, 243, 244, 245, 246, 251, 252, 313, 314, 329, 30, 407, 408, 411, 412,
413, & 414 OF THE PLATED TOWN OF ILLINOIS CITY
NOW PART OF THE CITY OF EAST ST. LOUIS
(PLAT BOOK F PAGE 8) RECORDED JULY 20th 1891

ILLINOIS CITY
PLAT BOOK E PAGE 301 & 302
RECORDED JULY 2nd 1895



SPACE RESERVED FOR RECORDING OFFICER



PROP. CURVE 55S-1
PI STA. = 64+62.70
Δ = 0° 19' 12" (RT)
T = 222.64'
L = 445.28'
R = 79,694.32'
C = 445.28'
CB = S 32° 20' 46" W
P.C. STA. = 62+40.06
P.T. STA. = 66+85.34

PROP. CURVE 55S-2
PI STA. = 71+51.26
Δ = 19° 05' 52" (RT)
T = 294.38'
L = 583.31'
R = 1,750.00'
C = 580.61'
CB = S 42° 03' 18" W
P.C. STA. = 68+56.88
P.T. STA. = 74+40.19

PROP. CURVE 55S-3
PI STA. = 78+46.09
Δ = 24° 21' 42" (RT)
T = 405.90'
L = 799.54'
R = 1,880.42'
C = 793.53'
CB = S 63° 47' 05" W
P.C. STA. = 74+40.19
P.T. STA. = 82+39.72

STATION/OFFSET REFERENCED BOWMAN			
STATION	OFFSET	NORTH	EAST
79+11.56	692.04' RT	14,042,855.0857	2,456,704.6058
74+03.28	581.83' RT	14,042,938.2134	2,457,046.3118
68+70.79	277.92' RT	14,043,037.3044	2,457,536.7490
68+06.93	213.76' RT	14,043,054.7984	2,457,624.0257
68+10.84	196.90' RT	14,043,042.4374	2,457,636.1389
67+85.11	191.04' RT	14,043,060.9889	2,457,654.9098
66+60.29	61.08' RT	14,043,096.4004	2,457,831.5768

CENTERLINE COORDINATE TABLE 55 SB			
STATION	NORTH	EAST	
PC 62+40.06	14,043,418.6478	2,458,107.8742	
PT 66+85.34	14,043,042.4635	2,457,869.6360	
PC 68+56.88	14,042,897.7964	2,457,777.4508	
PCC 74+40.19	14,042,466.6928	2,457,388.5325	
PT 82+39.72	14,042,116.1560	2,456,676.6258	

GEORGE L. WOODS
CONSULTING ENGINEERS
210 WEST CHESTNUT
CHATHAM, IL 62629
PROFESSIONAL DESIGN FIRM NO. 184-001181
PHONE: (217)-483-4168 FAX: (217)-483-4706

ILLINOIS DEPARTMENT OF TRANSPORTATION
PLAT OF HIGHWAYS
FAP ROUTE 998
SECTION 82-1-IHB
ST. CLAIR COUNTY
JOB NO. R-98-026-08
STATION 81+76.68 TO STATION 66+60.29 (55 SB)

SCALE: 1" = 50'

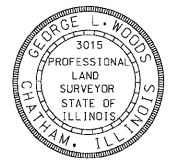
F.A.P. RTE.	SECTION	COUNTY	TOTAL SHEETS	SHEET NO.
998	82-1-IHB	ST CLAIR	89	88

ILLINOIS DEPARTMENT OF TRANSPORTATION
DIVISION OF HIGHWAYS/REGION 5/DISTRICT 8
1102 EASTPORT PLAZA DRIVE
COLLINGSVILLE, ILLINOIS 62234-6198

FED. ROAD DIST. NO.	ILLINOIS FED. AID PROJECT	CONTRACT NO.

STATE OF ILLINOIS)
) SS
COUNTY OF SANGAMON)

I, GEORGE L. WOODS, AN ILLINOIS PROFESSIONAL LAND SURVEYOR,
STATE THAT I HAVE SURVEYED OR DIRECTED THE SURVEY OF THE PLAT
OF HIGHWAY SHOWN HEREON AND THAT THIS PROFESSIONAL SERVICE CONFORMS
TO THE CURRENT ILLINOIS MINIMUM STANDARDS FOR A BOUNDARY SURVEY FOR THE
PROPOSED PARCEL(S) TO BE ACQUIRED BY THE STATE OF ILLINOIS, DEPARTMENT OF
TRANSPORTATION, SHOWN HEREON.



DATED _____
GEORGE L. WOODS, PLS NO. 3015
LICENSE EXPIRATION DATE: 11/30/2010

STATIONING REFERENCED TO PROPOSED 55 SB	COMPLETION DATE OF FIELD WORK PERFORMED
LAND SURVEY: OCT./2009	ROW STAKING: OCT./2009

PLOT DATE = 10/19/2009
FILE NAME = 08FILE8
PLOT SCALE = #SCALE#
USER NAME = #USER#